



Chipsmall Limited consists of a professional team with an average of over 10 year of expertise in the distribution of electronic components. Based in Hongkong, we have already established firm and mutual-benefit business relationships with customers from,Europe,America and south Asia,supplying obsolete and hard-to-find components to meet their specific needs.

With the principle of “Quality Parts,Customers Priority,Honest Operation,and Considerate Service”,our business mainly focus on the distribution of electronic components. Line cards we deal with include Microchip,ALPS,ROHM,Xilinx,Pulse,ON,Everlight and Freescale. Main products comprise IC,Modules,Potentiometer,IC Socket,Relay,Connector.Our parts cover such applications as commercial,industrial, and automotives areas.

We are looking forward to setting up business relationship with you and hope to provide you with the best service and solution. Let us make a better world for our industry!



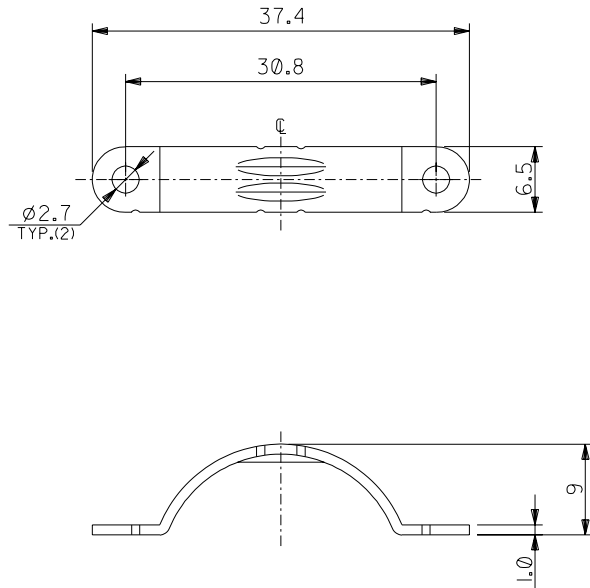
Contact us

Tel: +86-755-8981 8866 Fax: +86-755-8427 6832

Email & Skype: info@chipsmall.com Web: www.chipsmall.com

Address: A1208, Overseas Decoration Building, #122 Zhenhua RD., Futian, Shenzhen, China













注記
NOTES

- 材質
MATERIAL
ステンレス鋼
STAINLESS STEEL
- 適合カバーA : 59587-5010
APPLICABLE COVER A : 59587-5010
- 適合ネジ : 十字穴付きなべ小ネジ (58203-0020)
APPLICABLE SCREW : CROSS RECESSED PAN HEAD MACHINE SCREW (58203-0020)
ネジサイズ : M2.5X8
SCREW SIZE : M2.5X8

59589-5000	59589-50**
MATERIAL NO.	MODEL NO.

EC NO. DRWN: CHK: APPR:			EC NO. DRWN: CHK: APPR:			EC NO. DRWN: CHK: APPR:			REVISED '02/06/03 EC NO. J2002-3016 DRWN: S.AKIYAMA CHK: J.MIYAZAWA APPR: YO.IIO	RELEASED '02/02/04 EC NO. J2002-1828 DRWN: S.AKIYAMA CHK: J.MIYAZAWA APPR: YO.IIO	DESCRIPTION	MATERIAL 材料 注記参照 SEE NOTES	GENERAL TOLERANCES: (UNLESS SPECIFIED) 一般公差		SCALE 	DESIGN UNITS <input checked="" type="checkbox"/> mm <input type="checkbox"/> INCH	 THIRD ANGLE PROJECTION	<input type="checkbox"/> mm INCH <input type="checkbox"/> mm INCH <input checked="" type="checkbox"/> mm ONLY	REVISE ON CAD ONLY							
												FINISH 仕上り		10 UNDER 未満	±0.2	DRAWN BY & DATE  '02/01/22		TITLE: COMPACT ROBOT CONN. 50CKT. CABLE CLAMP								
													10 OVER 以上	30 UNDER 未満	±0.25	CHECKED BY & DATE  '02/02/04										
												WIRE RANGE 適用電線範囲		30 OVER 以上	±0.3	APPROVED BY & DATE  '02/02/04		MOLEX INCORPORATED								
												INS. RANGE 被覆外径		ANGLE 角度		±3°	CAD FILENAME 59589002.S01						MATERIAL NO. SEE CHART	DRAWING NO. SD-59589-002	SHEET NO. 1 OF 1	
A												0	REV	THIS DRAWING CONTAINS INFORMATION THAT IS PROPRIETARY TO MOLEX INCORPORATED AND SHOULD NOT BE USED WITHOUT WRITTEN PERMISSION.												SIZE B

TITLE:
COMPACT ROBOT CONN. 50CKT.
CABLE CLAMP

MOLEX INCORPORATED

MATERIAL NO. SEE CHART	DRAWING NO. SD-59589-002	SHEET NO. 1 OF 1
---------------------------	-----------------------------	---------------------