



Chipsmall Limited consists of a professional team with an average of over 10 year of expertise in the distribution of electronic components. Based in Hongkong, we have already established firm and mutual-benefit business relationships with customers from,Europe,America and south Asia,supplying obsolete and hard-to-find components to meet their specific needs.

With the principle of “Quality Parts,Customers Priority,Honest Operation,and Considerate Service”,our business mainly focus on the distribution of electronic components. Line cards we deal with include Microchip,ALPS,ROHM,Xilinx,Pulse,ON,Everlight and Freescale. Main products comprise IC,Modules,Potentiometer,IC Socket,Relay,Connector.Our parts cover such applications as commercial,industrial, and automotives areas.

We are looking forward to setting up business relationship with you and hope to provide you with the best service and solution. Let us make a better world for our industry!



Contact us

Tel: +86-755-8981 8866 Fax: +86-755-8427 6832

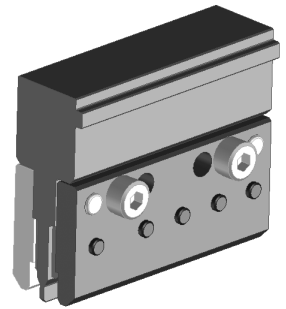
Email & Skype: info@chipsmall.com Web: www.chipsmall.com

Address: A1208, Overseas Decoration Building, #122 Zhenhua RD., Futian, Shenzhen, China





**High Speed Edge Card
Press-In Tool Instruction Sheet
Order No. 62201-7300**



FEATURES

- Lip provided for terminal support during pressing.
- Tool provides uniform distribution of press force across entire pin array.
- May be used as a stand-alone tool or mounted in an optional holder with other Molex press-in tools.
- Use tool 62100-6200 for removing connectors.

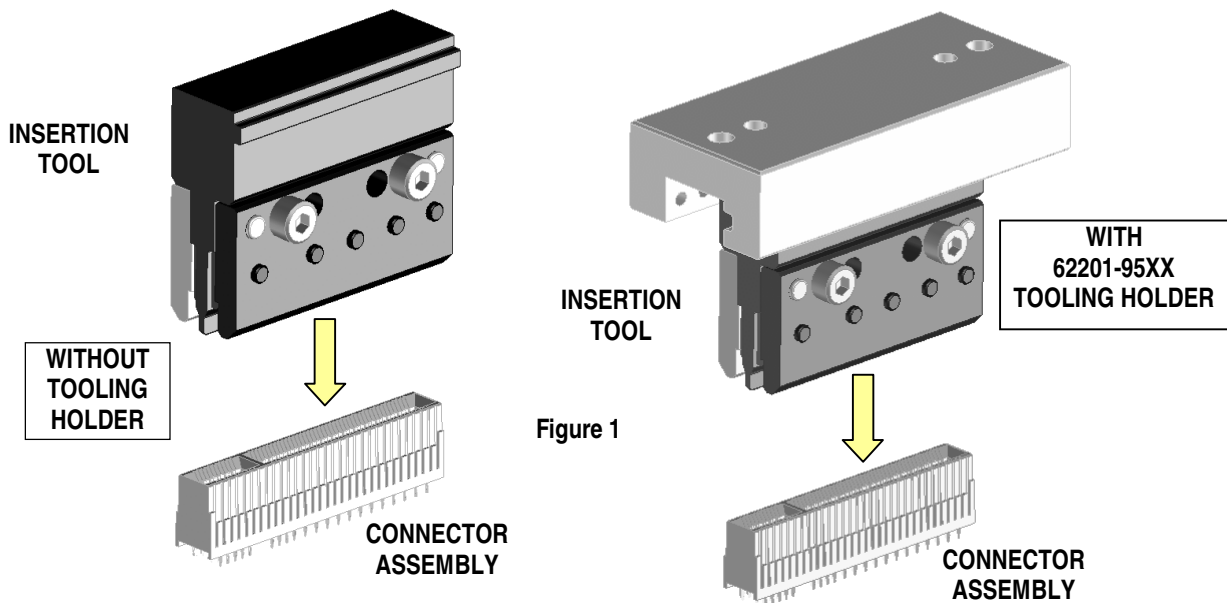
SCOPE

Products: High Speed Edge Card 108 Circuit Assembly 76421 Series. See Product List below for specific application tools

Product List

The following is a partial list of the product order numbers and their specifications that this tool is designed to run. Updates to this list are available on www.molex.com.

Connector Order Number	Description
76421-1000	High Speed Edge Card 108 Circuit Assembly



Tool Setup

The insertion tool is mounted in a 62201-95XX tool holder rail (ordered separately). See Figure 1.

The 62201-95XX rail is available to accommodate this press-in tool:

Tooling Holder Part Number	Tooling Holder Overall Length
62201-9502	72mm (2.83 in)

Reference: The 62201-7300 Press-In Tool is 48mm (1.89 in.) long.

Printed Circuit Board (PCB) Support

The High Speed Edge Card connector requires up to 2.7kg (6 lb) of force per pin to press into the PCB. To prevent excessive PCB flexure and/or damage to the PCB, a support plate is strongly recommended directly beneath the connector hole pattern.

Due to the custom nature of every application, Molex does not offer any PCB support plate. The customer must furnish their own support plate.

When creating the PCB support plate, remember to allow clearance for the connector pins and guide pegs as they pass through the PCB thickness.

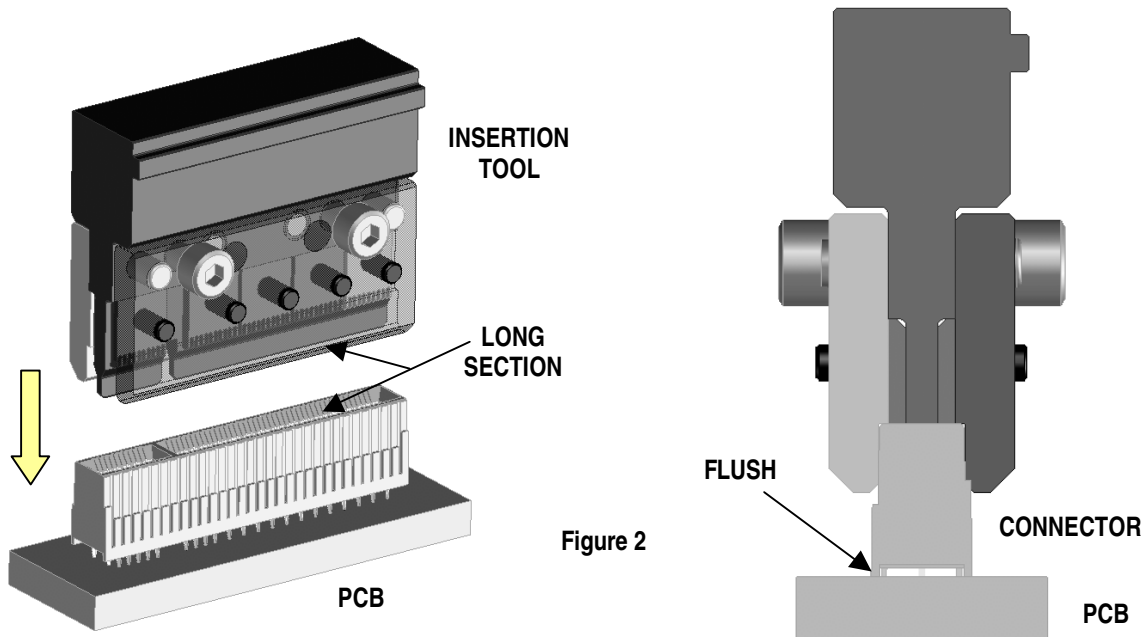
Press Equipment Recommendations

Many types of presses can be used to install connectors, but to assure consistent connector installation Molex recommends the following press criteria:

1. The capability to detect force variations as low as 4.5kg (10 lb) during the press-in cycle; excessive force measurements should stop the press-in cycle.
2. The rate of pressing can be regulated as low as 0.13mm (0.005in) per second.
3. Press stroke control to within 0.25mm (0.010in).
4. Total press stroke must be at least 19mm (0.75in).
5. For statistical purposes, automatic collection of force and distance data.

Tool Operation

1. By hand, carefully start the connector tails into the PCB holes.
2. Place the insertion tool into the connector. Note that the center blade of the tool has a long section and a short section that matches the connector entry. See Figure 2.
3. Using the insertion tool and an appropriate press, seat the power module until the bottom of the plastic housing and the surface of the PCB is flush as shown below.



CAUTION: To prevent injury, never operate any press without the guards in place. Refer to the press manufacturer's instruction manual.

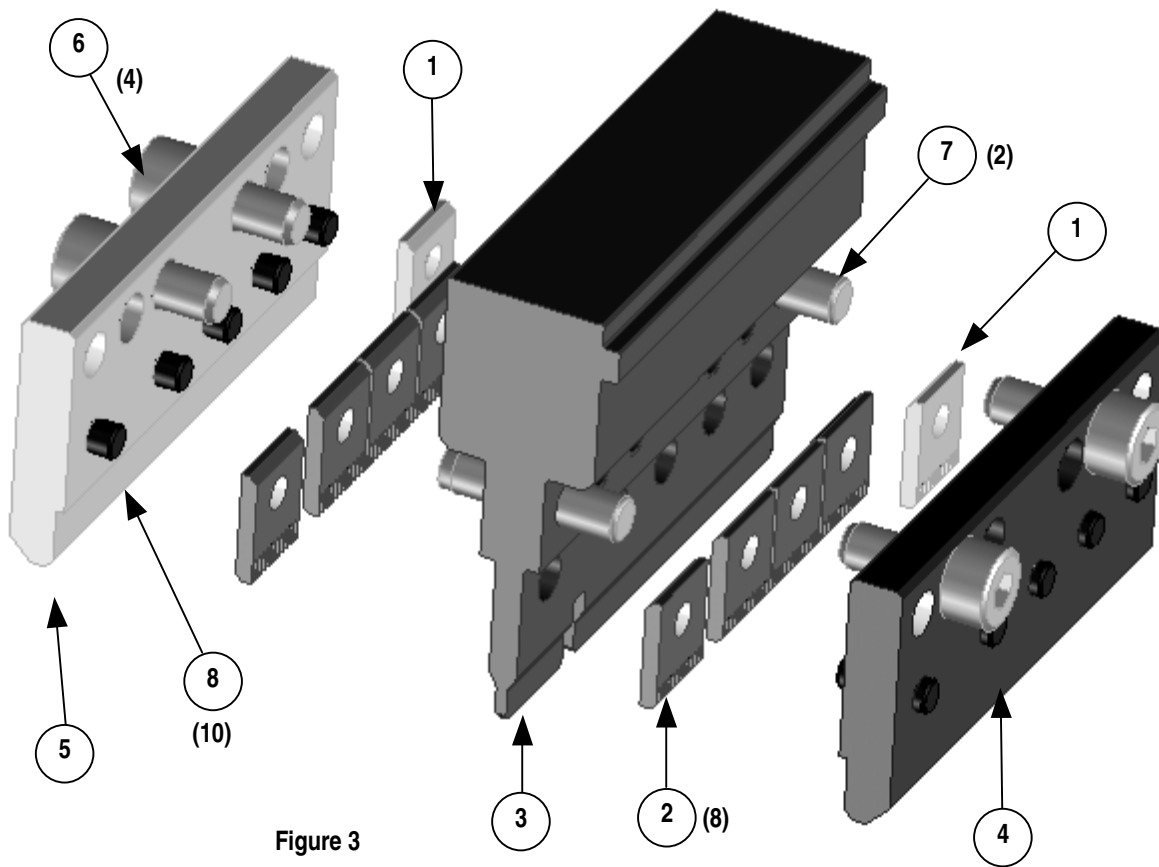
CAUTION: Molex application tooling specifications are valid only when used with Molex connectors and tooling.

PARTS LIST

Item	Order No	Description	Quantity
	62201-7300	Press-In Tool for High Speed Edge Card	Figure 3
1	62201-7301	Blade, 10 position	2
2	62201-7302	Blade, 11 position	8
3	62201-7303	Center Support Blade	1
4	62201-7304	Clamp Plate, LH	1
5	62201-7305	Clamp Plate, RH	1
6	N/A	M4 by 10 Long SHCS	4**
7	N/A	4mm Diameter by 16 Long Dowel Pin	2**
8	N/A	3mm Diameter by 8 Long Dowel Pin	10**

** Available from an industrial supply company such as MSC (1-800-645-7270).

Assembly Drawing



Americas Headquarters
 Lisle, Illinois 60532 U.S.A.
 1-800-78MOLEX
 amerinfo@molex.com

Far East North Headquarters
 Yamato, Kanagawa, Japan
 81-462-65-2324
 feninfo@molex.com

Far East South Headquarters
 Jurong, Singapore
 65-6-268-6868
 fesinfo@molex.com

European Headquarters
 Munich, Germany
 49-89-413092-0
 eurinfo@molex.com

Corporate Headquarters
 2222 Wellington Ct.
 Lisle, IL 60532 U.S.A.
 630-969-4550
 Fax: 630-969-1352

Visit our Web site at <http://www.molex.com>