



Chipsmall Limited consists of a professional team with an average of over 10 year of expertise in the distribution of electronic components. Based in Hongkong, we have already established firm and mutual-benefit business relationships with customers from,Europe,America and south Asia,supplying obsolete and hard-to-find components to meet their specific needs.

With the principle of “Quality Parts,Customers Priority,Honest Operation,and Considerate Service”,our business mainly focus on the distribution of electronic components. Line cards we deal with include Microchip,ALPS,ROHM,Xilinx,Pulse,ON,Everlight and Freescale. Main products comprise IC,Modules,Potentiometer,IC Socket,Relay,Connector.Our parts cover such applications as commercial,industrial, and automotives areas.

We are looking forward to setting up business relationship with you and hope to provide you with the best service and solution. Let us make a better world for our industry!



Contact us

Tel: +86-755-8981 8866 Fax: +86-755-8427 6832

Email & Skype: info@chipsmall.com Web: www.chipsmall.com

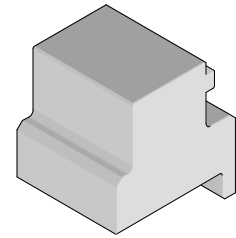
Address: A1208, Overseas Decoration Building, #122 Zhenhua RD., Futian, Shenzhen, China



**I-Trac™ Power
Module Installation
(Right Angle)
Press-In Tool**



**Application Tooling
Specification Sheet**



Order No. 62201-8627

FEATURES

- Lip provided for positive alignment to connector assembly
- Tool provides uniform distribution of press force across entire pin array
- May be used as a stand-alone tool or mounted in an optional holder with other Molex press-in tools
- Fits in same rail as existing tools
- Can be placed on either side of existing power module with Daughtercard installed
- Use as stand-alone tool if power module is installed separately

SCOPE

Products: I-Trac™ Power Module Assembly, Right Angle 78229 and 78230 Series, 7 Row Assemblies. See Product List below for specific part numbers.

Product List

The following is a partial list of the product order numbers and their specifications this tool is designed to run. Updates to this list are available on www.molex.com.

Right Angle Power Module Series No.	Row	Assembly Order Number							
78229	7	78229-1001	78229-1002	78229-1003	78229-1004	78229-1005	78229-1011	78229-1012	78229-1013
		78229-1014	78229-1015	78229-1021	78229-1022	78229-1023	78229-1024	78229-1025	78229-1031
		78229-1032	78229-1033	78229-1034	78229-1035	78229-1041	78229-1042	78229-1043	78229-1044
		78229-1045	78229-1051	78229-1052	78229-1053	78229-1054	78229-1055		
		78229-1101	78229-1102	78229-1103	78229-1104	78229-1105	78229-1111	78229-1112	78229-1113
		78229-1114	78229-1115	78229-1121	78229-1122	78229-1123	78229-1124	78229-1125	78229-1131
		78229-1132	78229-1133	78229-1134	78229-1135	78229-1141	78229-1142	78229-1143	78229-1144
		78229-1145	78229-1151	78229-1152	78229-1153	78229-1154	78229-1155		
		78229-1201	78229-1202	78229-1203	78229-1204	78229-1205	78229-1211	78229-1212	78229-1213
		78229-1214	78229-1215	78229-1221	78229-1222	78229-1223	78229-1224	78229-1225	78229-1231
		78229-1232	78229-1233	78229-1234	78229-1235	78229-1241	78229-1242	78229-1243	78229-1244
		78229-1245	78229-1251	78229-1252	78229-1253	78229-1254	78229-1255		
		78229-1301	78229-1302	78229-1303	78229-1304	78229-1305	78229-1311	78229-1312	78229-1313
		78229-1314	78229-1315	78229-1321	78229-1322	78229-1323	78229-1324	78229-1325	78229-1331
		78229-1332	78229-1333	78229-1334	78229-1335	78229-1341	78229-1342	78229-1343	78229-1344
		78229-1345	78229-1351	78229-1352	78229-1353	78229-1354	78229-1355		
		78229-1401	78229-1402	78229-1403	78229-1404	78229-1405	78229-1411	78229-1412	78229-1413
		78229-1414	78229-1415	78229-1421	78229-1422	78229-1423	78229-1424	78229-1425	78229-1431
78229-1432	78229-1433	78229-1434	78229-1435	78229-1441	78229-1442	78229-1443	78229-1444		
78229-1445	78229-1451	78229-1452	78229-1453	78229-1454	78229-1455				

Press-In Tool for I-Trac™ Power Module Assembly

Right Angle Power Module Series No.	Row	Assembly Order Number							
78229	7	78229-1501	78229-1502	78229-1503	78229-1504	78229-1505	78229-1511	78229-1512	78229-1513
		78229-1514	78229-1515	78229-1521	78229-1522	78229-1523	78229-1524	78229-1525	78229-1531
		78229-1532	78229-1533	78229-1534	78229-1535	78229-1541	78229-1542	78229-1543	78229-1544
		78229-1545	78229-1551	78229-1552	78229-1553	78229-1554	78229-1555		
		78229-2001	78229-2002	78229-2003	78229-2004	78229-2005	78229-2011	78229-2012	78229-2013
		78229-2014	78229-2015	78229-2021	78229-2022	78229-2023	78229-2024	78229-2025	78229-2031
		78229-2032	78229-2033	78229-2034	78229-2035	78229-2041	78229-2042	78229-2043	78229-2044
		78229-2045	78229-2051	78229-2052	78229-2053	78229-2054	78229-2055		
		78229-2101	78229-2102	78229-2103	78229-2104	78229-2105	78229-2111	78229-2112	78229-2113
		78229-2114	78229-2115	78229-2121	78229-2122	78229-2123	78229-2124	78229-2125	78229-2131
		78229-2132	78229-2133	78229-2134	78229-2135	78229-2141	78229-2142	78229-2143	78229-2144
		78229-2145	78229-2151	78229-2152	78229-2153	78229-2154	78229-2155		
		78229-2201	78229-2202	78229-2203	78229-2204	78229-2205	78229-2211	78229-2212	78229-2213
		78229-2214	78229-2215	78229-2221	78229-2222	78229-2223	78229-2224	78229-2225	78229-2231
		78229-2232	78229-2233	78229-2234	78229-2235	78229-2241	78229-2242	78229-2243	78229-2244
		78229-2245	78229-2251	78229-2252	78229-2253	78229-2254	78229-2255		
		78229-2301	78229-2302	78229-2303	78229-2304	78229-2305	78229-2311	78229-2312	78229-2313
		78229-2314	78229-2315	78229-2321	78229-2322	78229-2323	78229-2324	78229-2325	78229-2331
		78229-2332	78229-2333	78229-2334	78229-2335	78229-2341	78229-2342	78229-2343	78229-2344
		78229-2345	78229-2351	78229-2352	78229-2353	78229-2354	78229-2355		
		78229-2401	78229-2402	78229-2403	78229-2404	78229-2405	78229-2411	78229-2412	78229-2413
		78229-2414	78229-2415	78229-2421	78229-2422	78229-2423	78229-2424	78229-2425	78229-2431
		78229-2432	78229-2433	78229-2434	78229-2435	78229-2441	78229-2442	78229-2443	78229-2444
		78229-2445	78229-2451	78229-2452	78229-2453	78229-2454	78229-2455		
		78229-2501	78229-2502	78229-2503	78229-2504	78229-2505	78229-2511	78229-2512	78229-2513
		78229-2514	78229-2515	78229-2521	78229-2522	78229-2523	78229-2524	78229-2525	78229-2531
		78229-2532	78229-2533	78229-2534	78229-2535	78229-2541	78229-2542	78229-2543	78229-2544
		78229-2545	78229-2551	78229-2552	78229-2553	78229-2554	78229-2555		
		78229-5001	78229-5002	78229-5003	78229-5004	78229-5005	78229-5011	78229-5012	78229-5013
		78229-5014	78229-5015	78229-5021	78229-5022	78229-5023	78229-5024	78229-5025	78229-5031
		78229-5032	78229-5033	78229-5034	78229-5035	78229-5041	78229-5042	78229-5043	78229-5044
		78229-5045	78229-5051	78229-5052	78229-5053	78229-5054	78229-5055		
		78229-5101	78229-5102	78229-5103	78229-5104	78229-5105	78229-5111	78229-5112	78229-5113
		78229-5114	78229-5115	78229-5121	78229-5122	78229-5123	78229-5124	78229-5125	78229-5131
		78229-5132	78229-5133	78229-5134	78229-5135	78229-5141	78229-5142	78229-5143	78229-5144
		78229-5145	78229-5151	78229-5152	78229-5153	78229-5154	78229-5155		
		78229-5201	78229-5202	78229-5203	78229-5204	78229-5205	78229-5211	78229-5212	78229-5213
		78229-5214	78229-5215	78229-5221	78229-5222	78229-5223	78229-5224	78229-5225	78229-5231
		78229-5232	78229-5233	78229-5234	78229-5235	78229-5241	78229-5242	78229-5243	78229-5244
		78229-5245	78229-5251	78229-5252	78229-5253	78229-5254	78229-5255		
		78229-5301	78229-5302	78229-5303	78229-5304	78229-5305	78229-5311	78229-5312	78229-5313
		78229-5314	78229-5315	78229-5321	78229-5322	78229-5323	78229-5324	78229-5325	78229-5331
		78229-5332	78229-5333	78229-5334	78229-5335	78229-5341	78229-5342	78229-5343	78229-5344
		78229-5345	78229-5351	78229-5352	78229-5353	78229-5354	78229-5355		
		78229-5401	78229-5402	78229-5403	78229-5404	78229-5405	78229-5411	78229-5412	78229-5413
		78229-5414	78229-5415	78229-5421	78229-5422	78229-5423	78229-5424	78229-5425	78229-5431
		78229-5432	78229-5433	78229-5434	78229-5435	78229-5441	78229-5442	78229-5443	78229-5444
		78229-5445	78229-5451	78229-5452	78229-5453	78229-5454	78229-5455		
		78229-5501	78229-5502	78229-5503	78229-5504	78229-5505	78229-5511	78229-5512	78229-5513
		78229-5514	78229-5515	78229-5521	78229-5522	78229-5523	78229-5524	78229-5525	78229-5531

Right Angle Power Module Series No.	Row	Assembly Order Number							
78229	7	78229-5532	78229-5533	78229-5534	78229-5535	78229-5541	78229-5542	78229-5543	78229-5544
		78229-5545	78229-5551	78229-5552	78229-5553	78229-5554	78229-5555		
		78229-6001	78229-6002	78229-6003	78229-6004	78229-6005	78229-6011	78229-6012	78229-6013
		78229-6014	78229-6015	78229-6021	78229-6022	78229-6023	78229-6024	78229-6025	78229-6031
		78229-6032	78229-6033	78229-6034	78229-6035	78229-6041	78229-6042	78229-6043	78229-6044
		78229-6045	78229-6051	78229-6052	78229-6053	78229-6054	78229-6055		
		78229-6101	78229-6102	78229-6103	78229-6104	78229-6105	78229-6111	78229-6112	78229-6113
		78229-6114	78229-6115	78229-6121	78229-6122	78229-6123	78229-6124	78229-6125	78229-6131
		78229-6132	78229-6133	78229-6134	78229-6135	78229-6141	78229-6142	78229-6143	78229-6144
		78229-6145	78229-6151	78229-6152	78229-6153	78229-6154	78229-6155		
		78229-6201	78229-6202	78229-6203	78229-6204	78229-6205	78229-6211	78229-6212	78229-6213
		78229-6214	78229-6215	78229-6221	78229-6222	78229-6223	78229-6224	78229-6225	78229-6231
		78229-6232	78229-6233	78229-6234	78229-6235	78229-6241	78229-6242	78229-6243	78229-6244
		78229-6245	78229-6251	78229-6252	78229-6253	78229-6254	78229-6255		
		78229-6301	78229-6302	78229-6303	78229-6304	78229-6305	78229-6311	78229-6312	78229-6313
		78229-6314	78229-6315	78229-6321	78229-6322	78229-6323	78229-6324	78229-6325	78229-6331
		78229-6332	78229-6333	78229-6334	78229-6335	78229-6341	78229-6342	78229-6343	78229-6344
		78229-6345	78229-6351	78229-6352	78229-6353	78229-6354	78229-6355		
		78229-6401	78229-6402	78229-6403	78229-6404	78229-6405	78229-6411	78229-6412	78229-6413
		78229-6414	78229-6415	78229-6421	78229-6422	78229-6423	78229-6424	78229-6425	78229-6431
78229-6432	78229-6433	78229-6434	78229-6435	78229-6441	78229-6442	78229-6443	78229-6444		
78229-6445	78229-6451	78229-6452	78229-6453	78229-6454	78229-6455				
78229-6501	78229-6502	78229-6503	78229-6504	78229-6505	78229-6511	78229-6512	78229-6513		
78229-6514	78229-6515	78229-6521	78229-6522	78229-6523	78229-6524	78229-6525	78229-6531		
78229-6532	78229-6533	78229-6534	78229-6535	78229-6541	78229-6542	78229-6543	78229-6544		
78229-6545	78229-6551	78229-6552	78229-6553	78229-6554	78229-6555				
78230	7	78230-1101	78230-1102	78230-1103	78230-2101	78230-2102	78230-2103		
		78230-5101	78230-5102	78230-5103	78230-6101	78230-6102	78230-6103		

Tool Setup

Depending on the number of connectors to be installed and/or the press used, this tool can be used alone or with a group of press-in tools, mounted in a 62201-95XX rail (ordered separately). See Figure 1.

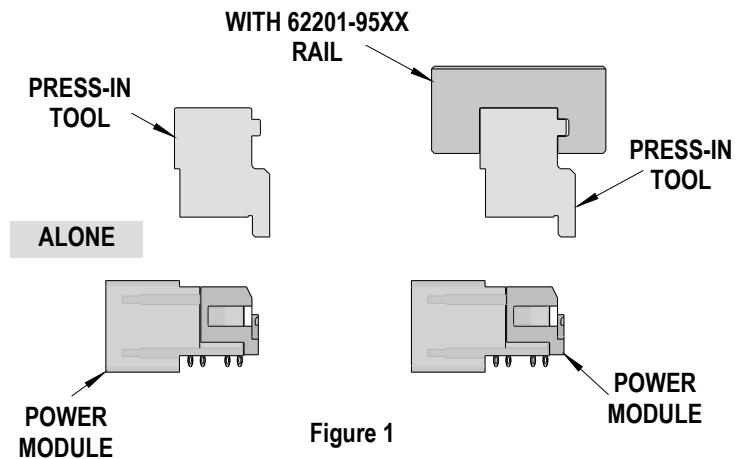


Figure 1

Tool Installation

The 62201-95XX rail is available in a variety of lengths to accommodate multiple press-in tools.

Rail Part Number	Rail Overall Length
62201-9501	24mm (0.94 in)
62201-9502	72mm (2.83 in)
62201-9503	156mm (6.14 in)
62201-9504	216mm (8.50 in)
62201-9509	254mm (10.0 in)
62201-9511	305mm (12.0 in)

Reference: The 62201-8627- Press-In Tool is 15.0mm (0.59 in.) long.

Printed Circuit Board (PCB) Support

The I-Trac™ connectors require up to 6.0kg (13.2 lb) of force per pin to press into the PCB. To prevent excessive PCB flexure and/or damage to the PCB, a support plate is strongly recommended directly beneath the connector terminal hole pattern.

Due to the custom nature of every application, a board support is required for proper tool application. This can be supplied by the customer or by Molex. For more information contact Molex Application Tooling.

When creating the PCB support plate, remember to allow clearance for the connector terminal pins as they pass through the PCB thickness.

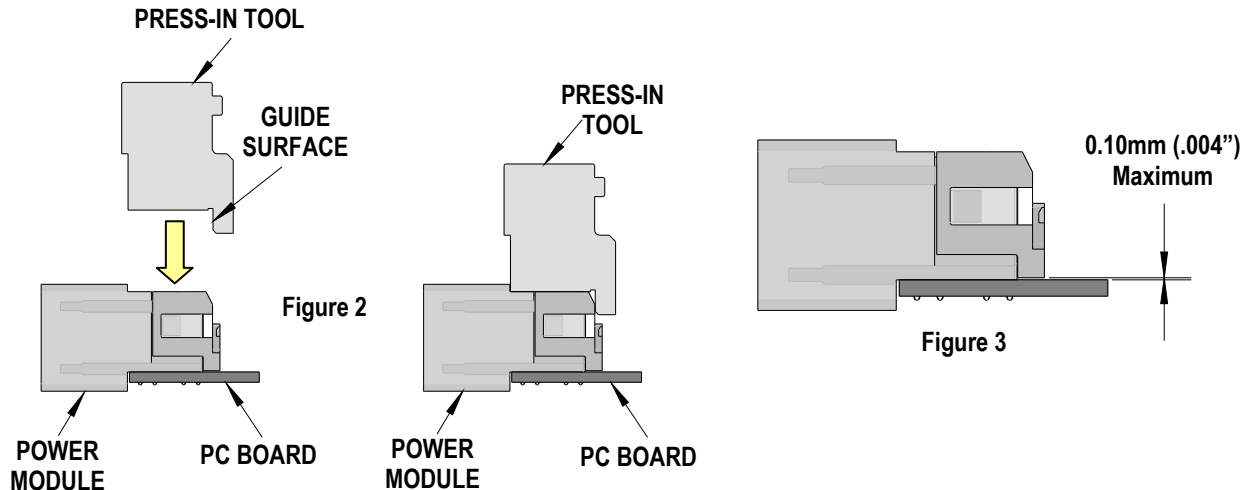
Press Equipment Recommendations

Many types of presses can be used to install I-Trac™ connectors, but to assure consistent connector installation Molex recommends the following press criteria:

1. The capability to detect force variations as low as 4.5kg (10 lb) during the press-in cycle; excessive force measurements should stop the press-in cycle.
2. The rate of pressing can be regulated as low as 0.13mm (0.005 in) per second.
3. Press stroke control to within 0.25mm (0.010 in).
4. Total press stroke must be at least 19mm (0.75 in).
5. For statistical purposes, automatic collection of force and distance data.

Tool Operation

1. Carefully insert, by hand, the power module(s) into the PCB hole pattern.
2. Place the application tool on top of the power module with the back guide surface of the tool against the back of the power module. See Figure 2.



3. Using the application tool and an appropriate press, seat the Daughtercard module until there is less than 0.10mm (.004 in) clearance between the bottom of the plastic housing and the surface of the PCB. See Figure 3.

CAUTION: To prevent injury, never operate any press without the guards in place. Refer to the press manufacturer's instruction manual.

CAUTION: Molex application tooling specifications are valid only when used with Molex connectors and tooling.

Contact Information

For more information on Molex application tooling please contact Molex at 1-800-786-6539.

<http://www.molex.com>