



Chipsmall Limited consists of a professional team with an average of over 10 year of expertise in the distribution of electronic components. Based in Hongkong, we have already established firm and mutual-benefit business relationships with customers from,Europe,America and south Asia,supplying obsolete and hard-to-find components to meet their specific needs.

With the principle of “Quality Parts,Customers Priority,Honest Operation,and Considerate Service”,our business mainly focus on the distribution of electronic components. Line cards we deal with include Microchip,ALPS,ROHM,Xilinx,Pulse,ON,Everlight and Freescale. Main products comprise IC,Modules,Potentiometer,IC Socket,Relay,Connector.Our parts cover such applications as commercial,industrial, and automotives areas.

We are looking forward to setting up business relationship with you and hope to provide you with the best service and solution. Let us make a better world for our industry!



## Contact us

Tel: +86-755-8981 8866 Fax: +86-755-8427 6832

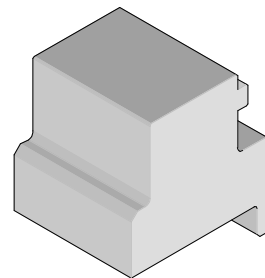
Email & Skype: info@chipsmall.com Web: www.chipsmall.com

Address: A1208, Overseas Decoration Building, #122 Zhenhua RD., Futian, Shenzhen, China





**I-Trac™ Power Module Installation  
(Right Angle)  
Application Tooling Specification  
Press-In Tool  
Order No. 62201-8628**



**FEATURES**

- Lip provided for positive alignment to connector assembly
- Tool provides uniform distribution of press force across entire pin array
- May be used as a stand-alone tool or mounted in an optional holder with other Molex press-in tools
- Fits in same rail as existing tools
- Can be placed on either side of existing power module with Daughtercard installed
- Use as stand-alone tool if power module is installed separately

**SCOPE**

Products: I-Trac™ Power Module Assembly, Right Angle 78234 and 78235 Series, 11 Row Assemblies. See Product List below for specific part numbers.

**Product List**

The following is a partial list of the product order numbers and their specifications this tool is designed to run. Updates to this list are available on [www.molex.com](http://www.molex.com).

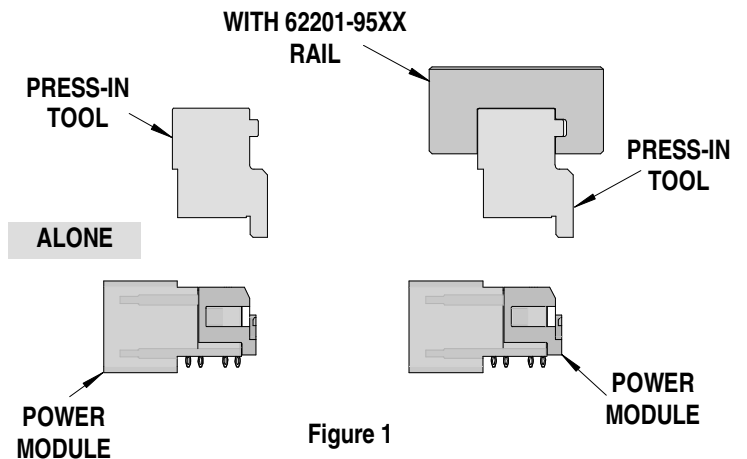
Right Angle Power Module Series No.	Row	Assembly Order Number							
78234	11	78234-1001	78234-1002	78234-1003	78234-1004	78234-1005	78234-1011	78234-1012	78234-1013
		78234-1014	78234-1015	78234-1021	78234-1022	78234-1023	78234-1024	78234-1025	78234-1031
		78234-1032	78234-1033	78234-1034	78234-1035	78234-1041	78234-1042	78234-1043	78234-1044
		78234-1045	78234-1051	78234-1052	78234-1053	78234-1054	78234-1055		
		78234-1101	78234-1102	78234-1103	78234-1104	78234-1105	78234-1111	78234-1112	78234-1113
		78234-1114	78234-1115	78234-1121	78234-1122	78234-1123	78234-1124	78234-1125	78234-1131
		78234-1132	78234-1133	78234-1134	78234-1135	78234-1141	78234-1142	78234-1143	78234-1144
		78234-1145	78234-1151	78234-1152	78234-1153	78234-1154	78234-1155		
		78234-1201	78234-1202	78234-1203	78234-1204	78234-1205	78234-1211	78234-1212	78234-1213
		78234-1214	78234-1215	78234-1221	78234-1222	78234-1223	78234-1224	78234-1225	78234-1231
		78234-1232	78234-1233	78234-1234	78234-1235	78234-1241	78234-1242	78234-1243	78234-1244
		78234-1245	78234-1251	78234-1252	78234-1253	78234-1254	78234-1255		
		78234-1301	78234-1302	78234-1303	78234-1304	78234-1305	78234-1311	78234-1312	78234-1313
		78234-1314	78234-1315	78234-1321	78234-1322	78234-1323	78234-1324	78234-1325	78234-1331
		78234-1332	78234-1333	78234-1334	78234-1335	78234-1341	78234-1342	78234-1343	78234-1344
		78234-1345	78234-1351	78234-1352	78234-1353	78234-1354	78234-1355		
		78234-1401	78234-1402	78234-1403	78234-1404	78234-1405	78234-1411	78234-1412	78234-1413
		78234-1414	78234-1415	78234-1421	78234-1422	78234-1423	78234-1424	78234-1425	78234-1431
		78234-1432	78234-1433	78234-1434	78234-1435	78234-1441	78234-1442	78234-1443	78234-1444
		78234-1445	78234-1451	78234-1452	78234-1453	78234-1454	78234-1455		
78234-1501	78234-1502	78234-1503	78234-1504	78234-1505	78234-1511	78234-1512	78234-1513		
78234-1514	78234-1515	78234-1521	78234-1522	78234-1523	78234-1524	78234-1525	78234-1531		

Right Angle Power Module Series No.	Row	Assembly Order Number							
78234	11	78234-1532	78234-1533	78234-1534	78234-1535	78234-1541	78234-1542	78234-1543	78234-1544
		78234-1545	78234-1551	78234-1552	78234-1553	78234-1554	78234-1555		
		78234-2001	78234-2002	78234-2003	78234-2004	78234-2005	78234-2011	78234-2012	78234-2013
		78234-2014	78234-2015	78234-2021	78234-2022	78234-2023	78234-2024	78234-2025	78234-2031
		78234-2032	78234-2033	78234-2034	78234-2035	78234-2041	78234-2042	78234-2043	78234-2044
		78234-2045	78234-2051	78234-2052	78234-2053	78234-2054	78234-2055		
		78234-2101	78234-2102	78234-2103	78234-2104	78234-2105	78234-2111	78234-2112	78234-2113
		78234-2114	78234-2115	78234-2121	78234-2122	78234-2123	78234-2124	78234-2125	78234-2131
		78234-2132	78234-2133	78234-2134	78234-2135	78234-2141	78234-2142	78234-2143	78234-2144
		78234-2145	78234-2151	78234-2152	78234-2153	78234-2154	78234-2155		
		78234-2201	78234-2202	78234-2203	78234-2204	78234-2205	78234-2211	78234-2212	78234-2213
		78234-2214	78234-2215	78234-2221	78234-2222	78234-2223	78234-2224	78234-2225	78234-2231
		78234-2232	78234-2233	78234-2234	78234-2235	78234-2241	78234-2242	78234-2243	78234-2244
		78234-2245	78234-2251	78234-2252	78234-2253	78234-2254	78234-2255		
		78234-2301	78234-2302	78234-2303	78234-2304	78234-2305	78234-2311	78234-2312	78234-2313
		78234-2314	78234-2315	78234-2321	78234-2322	78234-2323	78234-2324	78234-2325	78234-2331
		78234-2332	78234-2333	78234-2334	78234-2335	78234-2341	78234-2342	78234-2343	78234-2344
		78234-2345	78234-2351	78234-2352	78234-2353	78234-2354	78234-2355		
		78234-2401	78234-2402	78234-2403	78234-2404	78234-2405	78234-2411	78234-2412	78234-2413
		78234-2414	78234-2415	78234-2421	78234-2422	78234-2423	78234-2424	78234-2425	78234-2431
		78234-2432	78234-2433	78234-2434	78234-2435	78234-2441	78234-2442	78234-2443	78234-2444
		78234-2445	78234-2451	78234-2452	78234-2453	78234-2454	78234-2455		
		78234-2501	78234-2502	78234-2503	78234-2504	78234-2505	78234-2511	78234-2512	78234-2513
		78234-2514	78234-2515	78234-2521	78234-2522	78234-2523	78234-2524	78234-2525	78234-2531
		78234-2532	78234-2533	78234-2534	78234-2535	78234-2541	78234-2542	78234-2543	78234-2544
		78234-2545	78234-2551	78234-2552	78234-2553	78234-2554	78234-2555		
		78234-5001	78234-5002	78234-5003	78234-5004	78234-5005	78234-5011	78234-5012	78234-5013
		78234-5014	78234-5015	78234-5021	78234-5022	78234-5023	78234-5024	78234-5025	78234-5031
		78234-5032	78234-5033	78234-5034	78234-5035	78234-5041	78234-5042	78234-5043	78234-5044
		78234-5045	78234-5051	78234-5052	78234-5053	78234-5054	78234-5055		
		78234-5101	78234-5102	78234-5103	78234-5104	78234-5105	78234-5111	78234-5112	78234-5113
		78234-5114	78234-5115	78234-5121	78234-5122	78234-5123	78234-5124	78234-5125	78234-5131
		78234-5132	78234-5133	78234-5134	78234-5135	78234-5141	78234-5142	78234-5143	78234-5144
		78234-5145	78234-5151	78234-5152	78234-5153	78234-5154	78234-5155		
		78234-5201	78234-5202	78234-5203	78234-5204	78234-5205	78234-5211	78234-5212	78234-5213
		78234-5214	78234-5215	78234-5221	78234-5222	78234-5223	78234-5224	78234-5225	78234-5231
		78234-5232	78234-5233	78234-5234	78234-5235	78234-5241	78234-5242	78234-5243	78234-5244
		78234-5245	78234-5251	78234-5252	78234-5253	78234-5254	78234-5255		
		78234-5301	78234-5302	78234-5303	78234-5304	78234-5305	78234-5311	78234-5312	78234-5313
		78234-5314	78234-5315	78234-5321	78234-5322	78234-5323	78234-5324	78234-5325	78234-5331
78234-5332	78234-5333	78234-5334	78234-5335	78234-5341	78234-5342	78234-5343	78234-5344		
78234-5345	78234-5351	78234-5352	78234-5353	78234-5354	78234-5355				
78234-5401	78234-5402	78234-5403	78234-5404	78234-5405	78234-5411	78234-5412	78234-5413		
78234-5414	78234-5415	78234-5421	78234-5422	78234-5423	78234-5424	78234-5425	78234-5431		
78234-5432	78234-5433	78234-5434	78234-5435	78234-5441	78234-5442	78234-5443	78234-5444		
78234-5445	78234-5451	78234-5452	78234-5453	78234-5454	78234-5455				
78234-5501	78234-5502	78234-5503	78234-5504	78234-5505	78234-5511	78234-5512	78234-5513		
78234-5514	78234-5515	78234-5521	78234-5522	78234-5523	78234-5524	78234-5525	78234-5531		
78234-5532	78234-5533	78234-5534	78234-5535	78234-5541	78234-5542	78234-5543	78234-5544		
78234-5545	78234-5551	78234-5552	78234-5553	78234-5554	78234-5555				

Right Angle Power Module Series No.	Row	Assembly Order Number							
78234	11	78234-6001	78234-6002	78234-6003	78234-6004	78234-6005	78234-6011	78234-6012	78234-6013
		78234-6014	78234-6015	78234-6021	78234-6022	78234-6023	78234-6024	78234-6025	78234-6031
		78234-6032	78234-6033	78234-6034	78234-6035	78234-6041	78234-6042	78234-6043	78234-6044
		78234-6045	78234-6051	78234-6052	78234-6053	78234-6054	78234-6055		
		78234-6101	78234-6102	78234-6103	78234-6104	78234-6105	78234-6111	78234-6112	78234-6113
		78234-6114	78234-6115	78234-6121	78234-6122	78234-6123	78234-6124	78234-6125	78234-6131
		78234-6132	78234-6133	78234-6134	78234-6135	78234-6141	78234-6142	78234-6143	78234-6144
		78234-6145	78234-6151	78234-6152	78234-6153	78234-6154	78234-6155		
		78234-6201	78234-6202	78234-6203	78234-6204	78234-6205	78234-6211	78234-6212	78234-6213
		78234-6214	78234-6215	78234-6221	78234-6222	78234-6223	78234-6224	78234-6225	78234-6231
		78234-6232	78234-6233	78234-6234	78234-6235	78234-6241	78234-6242	78234-6243	78234-6244
		78234-6245	78234-6251	78234-6252	78234-6253	78234-6254	78234-6255		
		78234-6301	78234-6302	78234-6303	78234-6304	78234-6305	78234-6311	78234-6312	78234-6313
		78234-6314	78234-6315	78234-6321	78234-6322	78234-6323	78234-6324	78234-6325	78234-6331
		78234-6332	78234-6333	78234-6334	78234-6335	78234-6341	78234-6342	78234-6343	78234-6344
		78234-6345	78234-6351	78234-6352	78234-6353	78234-6354	78234-6355		
		78234-6401	78234-6402	78234-6403	78234-6404	78234-6405	78234-6411	78234-6412	78234-6413
		78234-6414	78234-6415	78234-6421	78234-6422	78234-6423	78234-6424	78234-6425	78234-6431
		78234-6432	78234-6433	78234-6434	78234-6435	78234-6441	78234-6442	78234-6443	78234-6444
		78234-6445	78234-6451	78234-6452	78234-6453	78234-6454	78234-6455		
78234-6501	78234-6502	78234-6503	78234-6504	78234-6505	78234-6511	78234-6512	78234-6513		
78234-6514	78234-6515	78234-6521	78234-6522	78234-6523	78234-6524	78234-6525	78234-6531		
78234-6532	78234-6533	78234-6534	78234-6535	78234-6541	78234-6542	78234-6543	78234-6544		
78234-6545	78234-6551	78234-6552	78234-6553	78234-6554	78234-6555				
78235	11	78235-1101	78235-1102	78235-1103	78235-2101	78235-2102	78235-2103		
		78235-5101	78235-5102	78235-5103	78235-6101	78235-6102	78235-6103		

### Tool Setup

Depending on the number of connectors to be installed and/or the press used, this tool can be used alone or with a group of press-in tools, mounted in a 62201-95XX rail (ordered separately). See Figure 1.



## Tool Installation

The 62201-95XX rail is available in a variety of lengths to accommodate multiple press-in tools.

Rail Part Number	Rail Overall Length
62201-9501	24mm (0.94 in)
62201-9502	72mm (2.83 in)
62201-9503	156mm (6.14 in)
62201-9504	216mm (8.50 in)
62201-9509	254mm (10.0 in)
62201-9511	305mm (12.0 in)

Reference: The 62201-8628- Press-In Tool is 15.0mm (0.59 in.) long.

## Printed Circuit Board (PCB) Support

The I-Trac™ connectors require up to 6.0kg (13.2 lb) of force per pin to press into the PCB. To prevent excessive PCB flexure and/or damage to the PCB, a support plate is strongly recommended directly beneath the connector terminal hole pattern.

Due to the custom nature of every application, a board support is required for proper tool application. This can be supplied by the customer or by Molex. For more information contact Molex Application Tooling.

When creating the PCB support plate, remember to allow clearance for the connector terminal pins as they pass through the PCB thickness.

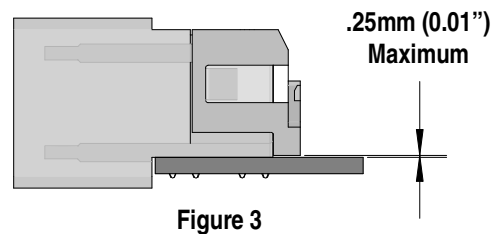
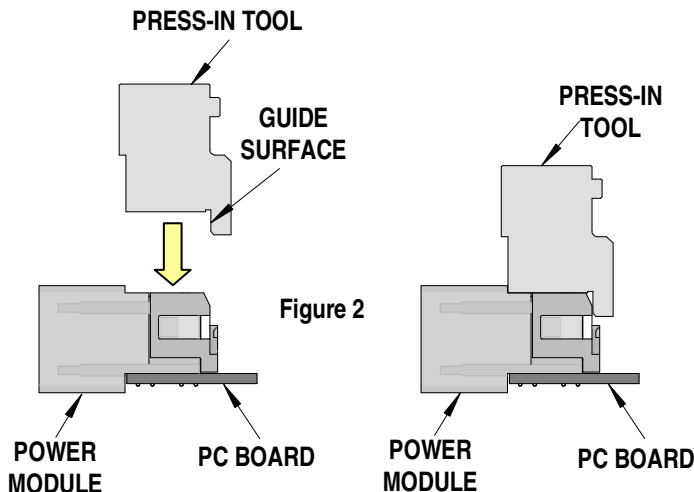
## Press Equipment Recommendations

Many types of presses can be used to install I-Trac™ connectors, but to assure consistent connector installation Molex recommends the following press criteria:

1. The capability to detect force variations as low as 4.5kg (10 lb) during the press-in cycle; excessive force measurements should stop the press-in cycle.
2. The rate of pressing can be regulated as low as 0.13mm (0.005 in) per second.
3. Press stroke control to within 0.25mm (0.010 in).
4. Total press stroke must be at least 19mm (0.75 in).
5. For statistical purposes, automatic collection of force and distance data.

## Tool Operation

1. Carefully insert, by hand, the power module(s) into the PCB hole pattern.
2. Place the application tool on top of the power module with the back guide surface of the tool against the back of the power module. See Figure 2.



3. Using the application tool and an appropriate press, seat the power module until there is less than 0.25mm (0.01 in) clearance between the bottom of the plastic housing and the surface of the PCB. See Figure 3.

**CAUTION:** To prevent injury, never operate any press without the guards in place. Refer to the press manufacturer's instruction manual.

**CAUTION:** Molex application tooling specifications are valid only when used with Molex connectors and tooling.

## Contact Information

For more information on Molex application tooling please contact Molex at 1-800-786-6539.

**Americas Headquarters**  
 Lisle, Illinois 60532 U.S.A.  
 1-800-78MOLEX  
 amerinfo@molex.com

**Far East North Headquarters**  
 Yamato, Kanagawa, Japan  
 81-462-65-2324  
 feninfo@molex.com

**Far East South Headquarters**  
 Jurong, Singapore  
 65-6-268-6868  
 fesinfo@molex.com

**European Headquarters**  
 Munich, Germany  
 49-89-413092-0  
 eurinfo@molex.com

**Corporate Headquarters**  
 2222 Wellington Ct.  
 Lisle, IL 60532 U.S.A.  
 630-969-4550  
 Fax: 630-969-1352

Visit our Web site at <http://www.molex.com>