



Chipsmall Limited consists of a professional team with an average of over 10 year of expertise in the distribution of electronic components. Based in Hongkong, we have already established firm and mutual-benefit business relationships with customers from,Europe,America and south Asia,supplying obsolete and hard-to-find components to meet their specific needs.

With the principle of “Quality Parts,Customers Priority,Honest Operation,and Considerate Service”,our business mainly focus on the distribution of electronic components. Line cards we deal with include Microchip,ALPS,ROHM,Xilinx,Pulse,ON,Everlight and Freescale. Main products comprise IC,Modules,Potentiometer,IC Socket,Relay,Connector.Our parts cover such applications as commercial,industrial, and automotives areas.

We are looking forward to setting up business relationship with you and hope to provide you with the best service and solution. Let us make a better world for our industry!



Contact us

Tel: +86-755-8981 8866 Fax: +86-755-8427 6832

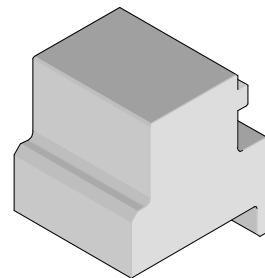
Email & Skype: info@chipsmall.com Web: www.chipsmall.com

Address: A1208, Overseas Decoration Building, #122 Zhenhua RD., Futian, Shenzhen, China





**I-Trac™ Power Module Installation
(Right Angle)
Application Tooling Specification
Press-In Tool
Order No. 62201-8629**



FEATURES

- Lip provided for positive alignment to connector assembly
- Tool provides uniform distribution of press force across entire pin array
- May be used as a stand-alone tool or mounted in an optional holder with other Molex press-in tools
- Fits in same rail as existing tools
- Can be placed on either side of existing power module with Daughtercard installed
- Use as stand-alone tool if power module is installed separately

SCOPE

Products: I-Trac™ Power Module Assembly, Right Angle 78239 Series, 15 Row Assemblies. See Product List below for specific part numbers.

Product List

The following is a partial list of the product order numbers and their specifications this tool is designed to run. Updates to this list are available on www.molex.com.

Right Angle Power Module Series No.	Row	Assembly Order Number							
78239	15	78239-1000	78239-1001	78239-1002	78239-1003	78239-1004	78239-1005	78239-1010	78239-1011
		78239-1012	78239-1013	78239-1014	78239-1015	78239-1020	78239-1021	78239-1022	78239-1023
		78239-1024	78239-1025	78239-1030	78239-1031	78239-1032	78239-1033	78239-1034	78239-1035
		78239-1040	78239-1041	78239-1042	78239-1043	78239-1044	78239-1045	78239-1050	78239-1051
		78239-1052	78239-1053	78239-1054	78239-1055				
		78239-1100	78239-1101	78239-1102	78239-1103	78239-1104	78239-1105	78239-1110	78239-1111
		78239-1112	78239-1113	78239-1114	78239-1115	78239-1120	78239-1121	78239-1122	78239-1123
		78239-1124	78239-1125	78239-1130	78239-1131	78239-1132	78239-1133	78239-1134	78239-1135
		78239-1140	78239-1141	78239-1142	78239-1143	78239-1144	78239-1145	78239-1150	78239-1151
		78239-1152	78239-1153	78239-1154	78239-1155				
		78239-1200	78239-1201	78239-1202	78239-1203	78239-1204	78239-1205	78239-1210	78239-1211
		78239-1212	78239-1213	78239-1214	78239-1215	78239-1220	78239-1221	78239-1222	78239-1223
		78239-1224	78239-1225	78239-1230	78239-1231	78239-1232	78239-1233	78239-1234	78239-1235
		78239-1240	78239-1241	78239-1242	78239-1243	78239-1244	78239-1245	78239-1250	78239-1251
		78239-1252	78239-1253	78239-1254	78239-1255				
		78239-1300	78239-1301	78239-1302	78239-1303	78239-1304	78239-1305	78239-1310	78239-1311
		78239-1312	78239-1313	78239-1314	78239-1315	78239-1320	78239-1321	78239-1322	78239-1323
		78239-1324	78239-1325	78239-1330	78239-1331	78239-1332	78239-1333	78239-1334	78239-1335
		78239-1340	78239-1341	78239-1342	78239-1343	78239-1344	78239-1345	78239-1350	78239-1351
		78239-1352	78239-1353	78239-1354	78239-1355				
78239-1400	78239-1401	78239-1402	78239-1403	78239-1404	78239-1405	78239-1410	78239-1411		
78239-1412	78239-1413	78239-1414	78239-1415	78239-1420	78239-1421	78239-1422	78239-1423		
78239-1424	78239-1425	78239-1430	78239-1431	78239-1432	78239-1433	78239-1434	78239-1435		

Press-In Tool for I-Trac™ Power Module Assembly

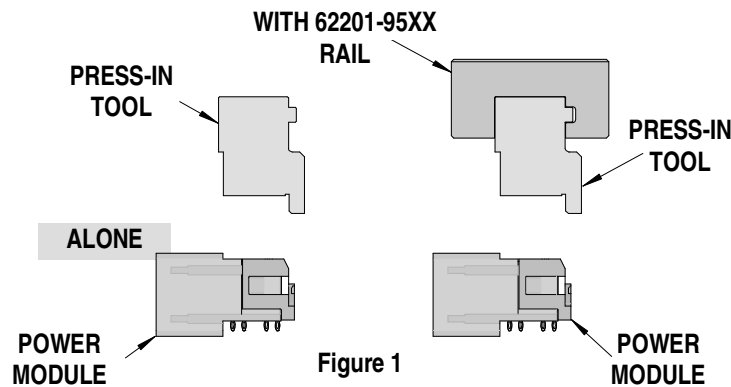
78239	15	78239-1440	78239-1441	78239-1442	78239-1443	78239-1444	78239-1445	78239-1450	78239-1451
		78239-1452	78239-1453	78239-1454	78239-1455				
		78239-1500	78239-1501	78239-1502	78239-1503	78239-1504	78239-1505	78239-1510	78239-1511
		78239-1512	78239-1513	78239-1514	78239-1515	78239-1520	78239-1521	78239-1522	78239-1523
		78239-1524	78239-1525	78239-1530	78239-1531	78239-1532	78239-1533	78239-1534	78239-1535
		78239-1540	78239-1541	78239-1542	78239-1543	78239-1544	78239-1545	78239-1550	78239-1551
		78239-1552	78239-1553	78239-1554	78239-1555				
		78239-2000	78239-2001	78239-2002	78239-2003	78239-2004	78239-2005	78239-2010	78239-2011
		78239-2012	78239-2013	78239-2014	78239-2015	78239-2020	78239-2021	78239-2022	78239-2023
		78239-2024	78239-2025	78239-2030	78239-2031	78239-2032	78239-2033	78239-2034	78239-2035
		78239-2040	78239-2041	78239-2042	78239-2043	78239-2044	78239-2045	78239-2050	78239-2051
		78239-2052	78239-2053	78239-2054	78239-2055				
		78239-2100	78239-2101	78239-2102	78239-2103	78239-2104	78239-2105	78239-2110	78239-2111
		78239-2112	78239-2113	78239-2114	78239-2115	78239-2120	78239-2121	78239-2122	78239-2123
		78239-2124	78239-2125	78239-2130	78239-2131	78239-2132	78239-2133	78239-2134	78239-2135
		78239-2140	78239-2141	78239-2142	78239-2143	78239-2144	78239-2145	78239-2150	78239-2151
		78239-2152	78239-2153	78239-2154	78239-2155				
		78239-2200	78239-2201	78239-2202	78239-2203	78239-2204	78239-2205	78239-2210	78239-2211
		78239-2212	78239-2213	78239-2214	78239-2215	78239-2220	78239-2221	78239-2222	78239-2223
		78239-2224	78239-2225	78239-2230	78239-2231	78239-2232	78239-2233	78239-2234	78239-2235
		78239-2240	78239-2241	78239-2242	78239-2243	78239-2244	78239-2245	78239-2250	78239-2251
		78239-2252	78239-2253	78239-2254	78239-2255				
		78239-2300	78239-2301	78239-2302	78239-2303	78239-2304	78239-2305	78239-2310	78239-2311
		78239-2312	78239-2313	78239-2314	78239-2315	78239-2320	78239-2321	78239-2322	78239-2323
		78239-2324	78239-2325	78239-2330	78239-2331	78239-2332	78239-2333	78239-2334	78239-2335
		78239-2340	78239-2341	78239-2342	78239-2343	78239-2344	78239-2345	78239-2350	78239-2351
		78239-2352	78239-2353	78239-2354	78239-2355				
		78239-2400	78239-2401	78239-2402	78239-2403	78239-2404	78239-2405	78239-2410	78239-2411
		78239-2412	78239-2413	78239-2414	78239-2415	78239-2420	78239-2421	78239-2422	78239-2423
		78239-2424	78239-2425	78239-2430	78239-2431	78239-2432	78239-2433	78239-2434	78239-2435
		78239-2440	78239-2441	78239-2442	78239-2443	78239-2444	78239-2445	78239-2450	78239-2451
		78239-2452	78239-2453	78239-2454	78239-2455				
		78239-2500	78239-2501	78239-2502	78239-2503	78239-2504	78239-2505	78239-2510	78239-2511
		78239-2512	78239-2513	78239-2514	78239-2515	78239-2520	78239-2521	78239-2522	78239-2523
		78239-2524	78239-2525	78239-2530	78239-2531	78239-2532	78239-2533	78239-2534	78239-2535
		78239-2540	78239-2541	78239-2542	78239-2543	78239-2544	78239-2545	78239-2550	78239-2551
		78239-2552	78239-2553	78239-2554	78239-2555				
		78239-5000	78239-5001	78239-5002	78239-5003	78239-5004	78239-5005	78239-5010	78239-5011
		78239-5012	78239-5013	78239-5014	78239-5015	78239-5020	78239-5021	78239-5022	78239-5023
		78239-5024	78239-5025	78239-5030	78239-5031	78239-5032	78239-5033	78239-5034	78239-5035
		78239-5040	78239-5041	78239-5042	78239-5043	78239-5044	78239-5045	78239-5050	78239-5051
		78239-5052	78239-5053	78239-5054	78239-5055				
		78239-5100	78239-5101	78239-5102	78239-5103	78239-5104	78239-5105	78239-5110	78239-5111
		78239-5112	78239-5113	78239-5114	78239-5115	78239-5120	78239-5121	78239-5122	78239-5123
		78239-5124	78239-5125	78239-5130	78239-5131	78239-5132	78239-5133	78239-5134	78239-5135
		78239-5140	78239-5141	78239-5142	78239-5143	78239-5144	78239-5145	78239-5150	78239-5151
		78239-5152	78239-5153	78239-5154	78239-5155				
		78239-5200	78239-5201	78239-5202	78239-5203	78239-5204	78239-5205	78239-5210	78239-5211
		78239-5212	78239-5213	78239-5214	78239-5215	78239-5220	78239-5221	78239-5222	78239-5223
		78239-5224	78239-5225	78239-5230	78239-5231	78239-5232	78239-5233	78239-5234	78239-5235
		78239-5240	78239-5241	78239-5242	78239-5243	78239-5244	78239-5245	78239-5250	78239-5251
		78239-5252	78239-5253	78239-5254	78239-5255				
		78239-5300	78239-5301	78239-5302	78239-5303	78239-5304	78239-5305	78239-5310	78239-5311

Press-In Tool for I-Trac™ Power Module Assembly

78239	15	78239-5312	78239-5313	78239-5314	78239-5315	78239-5320	78239-5321	78239-5322	78239-5323
		78239-5324	78239-5325	78239-5330	78239-5331	78239-5332	78239-5333	78239-5334	78239-5335
		78239-5340	78239-5341	78239-5342	78239-5343	78239-5344	78239-5345	78239-5350	78239-5351
		78239-5352	78239-5353	78239-5354	78239-5355				
		78239-5400	78239-5401	78239-5402	78239-5403	78239-5404	78239-5405	78239-5410	78239-5411
		78239-5412	78239-5413	78239-5414	78239-5415	78239-5420	78239-5421	78239-5422	78239-5423
		78239-5424	78239-5425	78239-5430	78239-5431	78239-5432	78239-5433	78239-5434	78239-5435
		78239-5440	78239-5441	78239-5442	78239-5443	78239-5444	78239-5445	78239-5450	78239-5451
		78239-5452	78239-5453	78239-5454	78239-5455				
		78239-5500	78239-5501	78239-5502	78239-5503	78239-5504	78239-5505	78239-5510	78239-5511
		78239-5512	78239-5513	78239-5514	78239-5515	78239-5520	78239-5521	78239-5522	78239-5523
		78239-5524	78239-5525	78239-5530	78239-5531	78239-5532	78239-5533	78239-5534	78239-5535
		78239-5540	78239-5541	78239-5542	78239-5543	78239-5544	78239-5545	78239-5550	78239-5551
		78239-5552	78239-5553	78239-5554	78239-5555				
		78239-6000	78239-6001	78239-6002	78239-6003	78239-6004	78239-6005	78239-6010	78239-6011
		78239-6012	78239-6013	78239-6014	78239-6015	78239-6020	78239-6021	78239-6022	78239-6023
		78239-6024	78239-6025	78239-6030	78239-6031	78239-6032	78239-6033	78239-6034	78239-6035
		78239-6040	78239-6041	78239-6042	78239-6043	78239-6044	78239-6045	78239-6050	78239-6051
		78239-6052	78239-6053	78239-6054	78239-6055				
		78239-6100	78239-6101	78239-6102	78239-6103	78239-6104	78239-6105	78239-6110	78239-6111
78239-6112	78239-6113	78239-6114	78239-6115	78239-6120	78239-6121	78239-6122	78239-6123		
78239-6124	78239-6125	78239-6130	78239-6131	78239-6132	78239-6133	78239-6134	78239-6135		
78239-6140	78239-6141	78239-6142	78239-6143	78239-6144	78239-6145	78239-6150	78239-6151		
78239-6152	78239-6153	78239-6154	78239-6155						
78239-6200	78239-6201	78239-6202	78239-6203	78239-6204	78239-6205	78239-6210	78239-6211		
78239-6212	78239-6213	78239-6214	78239-6215	78239-6220	78239-6221	78239-6222	78239-6223		
78239-6224	78239-6225	78239-6230	78239-6231	78239-6232	78239-6233	78239-6234	78239-6235		
78239-6240	78239-6241	78239-6242	78239-6243	78239-6244	78239-6245	78239-6250	78239-6251		
78239-6252	78239-6253	78239-6254	78239-6255						
78239-6300	78239-6301	78239-6302	78239-6303	78239-6304	78239-6305	78239-6310	78239-6311		
78239-6312	78239-6313	78239-6314	78239-6315	78239-6320	78239-6321	78239-6322	78239-6323		
78239-6324	78239-6325	78239-6330	78239-6331	78239-6332	78239-6333	78239-6334	78239-6335		
78239-6340	78239-6341	78239-6342	78239-6343	78239-6344	78239-6345	78239-6350	78239-6351		
78239-6352	78239-6353	78239-6354	78239-6355						
78239-6400	78239-6401	78239-6402	78239-6403	78239-6404	78239-6405	78239-6410	78239-6411		
78239-6412	78239-6413	78239-6414	78239-6415	78239-6420	78239-6421	78239-6422	78239-6423		
78239-6424	78239-6425	78239-6430	78239-6431	78239-6432	78239-6433	78239-6434	78239-6435		
78239-6440	78239-6441	78239-6442	78239-6443	78239-6444	78239-6445	78239-6450	78239-6451		
78239-6452	78239-6453	78239-6454	78239-6455						
78239-6500	78239-6501	78239-6502	78239-6503	78239-6504	78239-6505	78239-6510	78239-6511		
78239-6512	78239-6513	78239-6514	78239-6515	78239-6520	78239-6521	78239-6522	78239-6523		
78239-6524	78239-6525	78239-6530	78239-6531	78239-6532	78239-6533	78239-6534	78239-6535		
78239-6540	78239-6541	78239-6542	78239-6543	78239-6544	78239-6545	78239-6550	78239-6551		
78239-6552	78239-6553	78239-6554	78239-6555						

Tool Setup

Depending on the number of connectors to be installed and/or the press used, this tool can be used alone or with a group of press-in tools, mounted in a 62201-95XX rail (ordered separately). See Figure 1.



Tool Installation

The 62201-95XX rail is available in a variety of lengths to accommodate multiple press-in tools.

Rail Part Number	Rail Overall Length
62201-9501	24mm (0.94 in)
62201-9502	72mm (2.83 in)
62201-9503	156mm (6.14 in)
62201-9504	216mm (8.50 in)
62201-9509	254mm (10.0 in)
62201-9511	305mm (12.0 in)

Reference: The 62201-8629- Press-In Tool is 15.0mm (0.59 in.) long.

Printed Circuit Board (PCB) Support

The I-Trac™ connectors require up to 6.0kg (13.2 lb) of force per pin to press into the PCB. To prevent excessive PCB flexure and/or damage to the PCB, a support plate is strongly recommended directly beneath the connector terminal hole pattern.

Due to the custom nature of every application, a board support is required for proper tool application. This can be supplied by the customer or by Molex. For more information contact Molex Application Tooling.

When creating the PCB support plate, remember to allow clearance for the connector terminal pins as they pass through the PCB thickness.

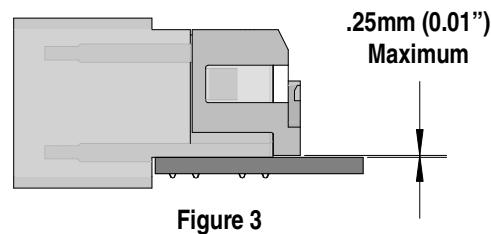
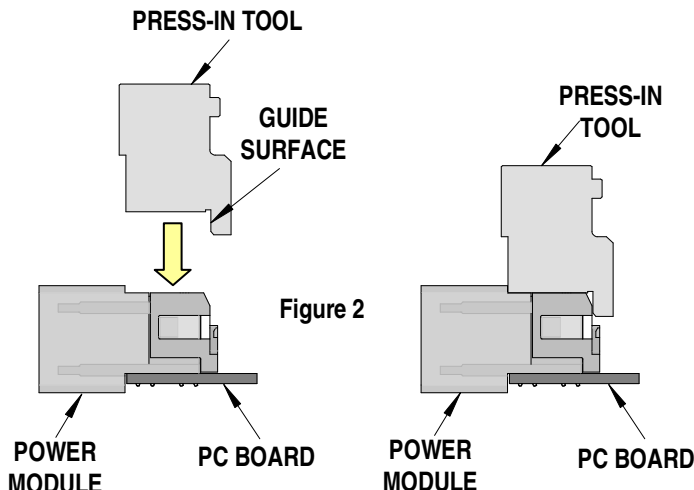
Press Equipment Recommendations

Many types of presses can be used to install I-Trac™ connectors, but to assure consistent connector installation Molex recommends the following press criteria:

1. The capability to detect force variations as low as 4.5kg (10 lb) during the press-in cycle; excessive force measurements should stop the press-in cycle.
2. The rate of pressing can be regulated as low as 0.13mm (0.005 in) per second.
3. Press stroke control to within 0.25mm (0.010 in).
4. Total press stroke must be at least 19mm (0.75 in).
5. For statistical purposes, automatic collection of force and distance data.

Tool Operation

1. Carefully insert, by hand, the power module(s) into the PCB hole pattern.
2. Place the application tool on top of the power module with the back guide surface of the tool against the back of the power module. See Figure 2.



3. Using the application tool and an appropriate press, seat the power module until there is less than 0.25mm (0.01 in) clearance between the bottom of the plastic housing and the surface of the PCB. See Figure 3.

CAUTION: To prevent injury, never operate any press without the guards in place. Refer to the press manufacturer's instruction manual.

CAUTION: Molex application tooling specifications are valid only when used with Molex connectors and tooling.

Contact Information

For more information on Molex application tooling please contact Molex at 1-800-786-6539.

Americas Headquarters
 Lisle, Illinois 60532 U.S.A.
 1-800-78MOLEX
 amerinfo@molex.com

Far East North Headquarters
 Yamato, Kanagawa, Japan
 81-462-65-2324
 feninfo@molex.com

Far East South Headquarters
 Jurong, Singapore
 65-6-268-6868
 fesinfo@molex.com

European Headquarters
 Munich, Germany
 49-89-413092-0
 eurinfo@molex.com

Corporate Headquarters
 2222 Wellington Ct.
 Lisle, IL 60532 U.S.A.
 630-969-4550
 Fax: 630-969-1352

Visit our Web site at <http://www.molex.com>