



Chipsmall Limited consists of a professional team with an average of over 10 year of expertise in the distribution of electronic components. Based in Hongkong, we have already established firm and mutual-benefit business relationships with customers from,Europe,America and south Asia,supplying obsolete and hard-to-find components to meet their specific needs.

With the principle of "Quality Parts,Customers Priority,Honest Operation,and Considerate Service",our business mainly focus on the distribution of electronic components. Line cards we deal with include Microchip,ALPS,ROHM,Xilinx,Pulse,ON,Everlight and Freescale. Main products comprise IC,Modules,Potentiometer,IC Socket,Relay,Connector.Our parts cover such applications as commercial,industrial, and automotives areas.

We are looking forward to setting up business relationship with you and hope to provide you with the best service and solution. Let us make a better world for our industry!



Contact us

Tel: +86-755-8981 8866 Fax: +86-755-8427 6832

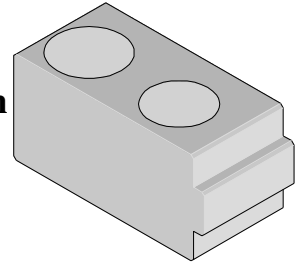
Email & Skype: info@chipsmall.com Web: www.chipsmall.com

Address: A1208, Overseas Decoration Building, #122 Zhenhua RD., Futian, Shenzhen, China





**5, 6 and 8 Row Universal Alignment Block
For HSD or VHDM® Backplane Connector System
Instruction Sheet
Order No. 62202-0212**



FEATURES

- Designed to provide proper spacer and clearance on Backplane Connectors with guide pins and polarizing pins.
- This tool module may be used with an Insertion Tool to press in (1) one connector or is stackable in a Molex tool holder system to press in multiple connectors at one time
- See 62201-0999 VHDM-HSD® Backplane And Daughtercard Installation Tooling Operation Manual for more information on tooling, presses and repair

SCOPE:

Products: VHDM®* 5, 6 and 8-Row use on all connectors with guide pins.

*VHDM® is a registered trademark of Amphenol Corporation

DESCRIPTION:

This tool is used with an Insertion Tool for pressing in an HSD or VHDM®* 5, 6 and 8-Row connector with locating pins. This block allows insertion tools for connectors with locating pins to be stacked in mounting rails with other VHDM or HSD insertion tools. They are mounted in one of several different length-mounting rails. See Sections 2.3 and 4.2 in 62201-0999 VHDM-HSD® Installation Tooling Manual for detailed information on selecting the rails and mounting these special combinations

This tool is intended for use with a customer supplied back up and in a press of sufficient tonnage to allow full seating of the connector. There are no replacement parts available for this tool. Should any part of the tool be damaged the whole tool must be replaced.

OPERATION:

Refer to 62201-0999 VHDM-HSD Manual for proper operation, maintenance, and options of this tool for proper operation, maintenance, and options of this tool.

Americas Headquarters	Far East North Headquarters	Far East South Headquarters	European Headquarters	Corporate Headquarters
Lisle, Illinois 60532 U.S.A.	Yamato, Kanagawa, Japan	Jurong, Singapore	Munich, Germany	2222 Wellington Ct.
1-800-78MOLEX	81-462-65-2324	65-6-268-6868	49-89-413092-0	Lisle, IL 60532 U.S.A.
amerinfo@molex.com	feninfo@molex.com	fesinfo@molex.com	eurinfo@molex.com	630-969-4550
				Fax: 630-969-1352

Visit our Web site at <http://www.molex.com>