



Chipsmall Limited consists of a professional team with an average of over 10 year of expertise in the distribution of electronic components. Based in Hongkong, we have already established firm and mutual-benefit business relationships with customers from,Europe,America and south Asia,supplying obsolete and hard-to-find components to meet their specific needs.

With the principle of “Quality Parts,Customers Priority,Honest Operation,and Considerate Service”,our business mainly focus on the distribution of electronic components. Line cards we deal with include Microchip,ALPS,ROHM,Xilinx,Pulse,ON,Everlight and Freescale. Main products comprise IC,Modules,Potentiometer,IC Socket,Relay,Connector.Our parts cover such applications as commercial,industrial, and automotives areas.

We are looking forward to setting up business relationship with you and hope to provide you with the best service and solution. Let us make a better world for our industry!



Contact us

Tel: +86-755-8981 8866 Fax: +86-755-8427 6832

Email & Skype: info@chipsmall.com Web: www.chipsmall.com

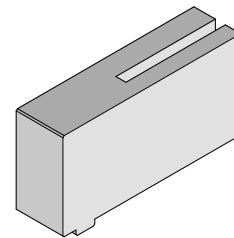
Address: A1208, Overseas Decoration Building, #122 Zhenhua RD., Futian, Shenzhen, China





**Modular Press-In
Tool for
Power Dock CPI**

**Application Tooling
Specification Sheet**



Order No. 62202-1807

DESCRIPTION

The 62202-1801 to 62202-1809 Modular Power Dock Press-In Tools are designed to insert Power Dock CPI connector modules onto a PC Board. The Individual press blocks stack together in a standard tool holder to press varying arrangements of power dock module assemblies on to a PC board.

SCOPE

Products: Power Dock CPI connector modules. See Product List below for specific application tools.

Product List

The following is a partial list of the product order numbers and their specifications this tool is designed to run. Updates to this list are available on www.molex.com.

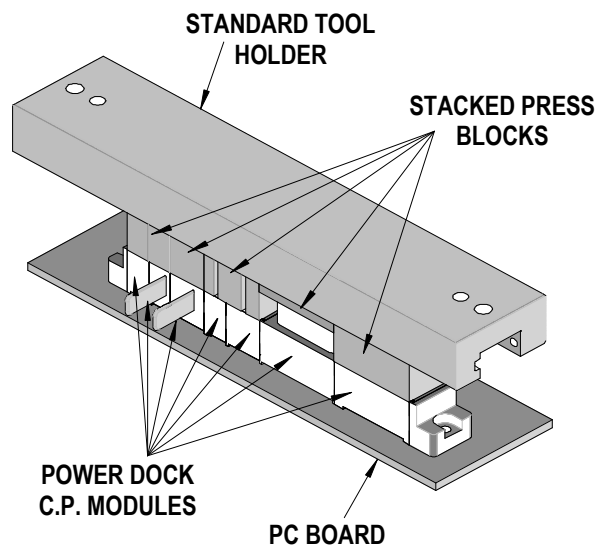


Figure 1 (For Power Dock Module assemblies)

Series No.	Description	Order No.			
45520	Power Dock Modular Power Plug 250V Vertical Std CPI	45520-0001	45520-2001	45520-3001	45520-4001
		45520-5001			
45521	Power Dock Modular Power Plug 250V Vertical 10.5 Mate CPI	45521-0001	45521-2001	45521-3001	45521-4001
		45521-5001			
45522	Power Dock Modular Power Plug 250V Vertical 12.5 Mate CPI	45522-0001	45522-2001	45522-3001	45522-4001
		45522-5001			
45523	Power Dock Modular Power Plug 250V Vertical 8.5 Mate CPI	45523-0001	45523-2001	45523-3001	45523-4001
		45523-5001			
45524	Power Dock Modular Power Socket 600V Vertical Std CPI	45524-0001	45524-0002		
45525	Power Dock Modular Power Plug 600V Vertical 10.5 Mate CPI	45525-0001	45525-0002		
45526	Power Dock Modular Power Plug 600V Vertical 12.5 Mate CPI	45526-0001			
45527	Power Dock Modular Power Plug 600V Vertical 8.5 Mate CPI	45527-0001			
45528	Power Dock Modular Signal 6 Pin Vertical CPI	45528-0001			
45529	Power Dock Modular Signal 24 Pin Vertical CPI	45529-0001			
45530	Power Dock Modular Signal Socket 6 Pin Vertical CPI	45530-0001			
45531	Power Dock Modular Signal Socket 24 Pin Vertical CPI	45531-0001			
45534	Power Dock Modular Vertical Guide Socket Passive	45534-0001			
45536	Power Dock Modular Vertical Guide Pin Passive	45536-0001			
45541	Power Dock Modular Signal 24 Pin Vertical CPI	45541-0001			
45544	Power Dock Modular Signal 6 Pin Vertical CPI	45544-0001			
45660	Power Dock Power Plug 250V CPI	45660-0001	45660-0002	45660-0004	45660-9004

Chart 1
Power Dock CPI modules and matching Press blocks

Power Dock Module Description	Power Dock Module Order Number	Press Block Order Number	Press Block Length	Press Block Quantity Required	Total Length Required			
250V Socket Module	45520-0001	62202-1805	7.5mm	1	7.5mm			
	45520-2001			2	15mm			
	45520-3001			3	22.5mm			
	45520-4001			4	30mm			
	45520-5001			5	37.5mm			
600V Socket Module	45524-0001	62202-1806	12mm	1	12mm			
	45524-0002			2	24mm			
250V Power Module	45521-0001	62202-1807	7.5mm	1	7.5mm			
	45521-2001			2	15mm			
	45521-3001			3	22.5mm			
	45521-4001			4	30mm			
	45521-5001			5	37.5mm			
	45522-0001			1	7.5mm			
	45522-2001			2	15mm			
	45522-3001			3	22.5mm			
	45522-4001			4	30mm			
	45522-5001			5	37.5mm			
	45523-0001			1	7.5mm			
	45523-2001			2	15mm			
	45523-3001			3	22.5mm			
	45523-4001			4	30mm			
	45523-5001			5	37.5mm			
	250V Custom Stack			45660-0001	62202-1807	7.5mm	1	7.5mm
				45660-0002			2	15mm
45660-0004		4	30mm					
45660-9004		4	30mm					
600V Power Module	45525-0001	62202-1808	12mm	1	12mm			
	45526-0001			1	12mm			
	45527-0001			1	12mm			
Female Signal Module	45530-0001	62202-1801	11.5mm	1	11.5mm			
Female Signal Module	45531-0001	62202-1802	26.5mm	1	26.5mm			
Male Signal Module	45529-0001	62202-1804	26.5mm	1	26.5mm			
	45541-0001			1	26.5mm			
Male Signal Module	45528-0001	62202-1803	11.5mm	1	11.5mm			
	45544-0001			1	11.5mm			
Passive Guide Pin	45536-0001	62202-1809	12mm	1	12mm			
Passive Guide Socket	45534-0001	62202-1806 or 1809	12mm	1	12mm			

OPERATION

1. The power dock modules are arranged in an assembly by locking them together end to end. Then the assembly is manually placed in its proper location on the PC board.

2. The 62202-180* press modules are arranged in a standard tool holder to match the connector assembly. See Chart 1. When pressing in multiple modules, make sure the tool holder length will accommodate all the tools. See Chart 2.
3. The press tool assembly is loaded onto the connector assembly.
4. The connector assembly is then pressed on to the PC board with a manual arbor press or other flat platen press. See Figure 1.
5. A support fixture (customer supplied) is highly recommended due to the high forces required to press in the connectors. It is placed below the PC board. This support may require clearance holes for the connector pins if the board thickness is less than the pin length.
6. A press stop to control the insertion stroke is also recommended.

Chart 2

Standard Tooling holders

The 62201-95XX tooling holders are available in a variety of lengths to accommodate multiple press-in tools.

Standard Tool Holder	Standard Tool Holder
Order Number	Length
62201-9501	24mm
62201-9502	72mm
62201-9503	156mm
62201-9504	216mm
62201-9509	254mm
62201-9511	305mm
62201-9512	406mm
62201-9513	100mm

Contact Information

For more information on Molex application tooling please contact Molex at 1-800-786-6539.

<http://www.molex.com>