



Chipsmall Limited consists of a professional team with an average of over 10 year of expertise in the distribution of electronic components. Based in Hongkong, we have already established firm and mutual-benefit business relationships with customers from,Europe,America and south Asia,supplying obsolete and hard-to-find components to meet their specific needs.

With the principle of “Quality Parts,Customers Priority,Honest Operation,and Considerate Service”,our business mainly focus on the distribution of electronic components. Line cards we deal with include Microchip,ALPS,ROHM,Xilinx,Pulse,ON,Everlight and Freescale. Main products comprise IC,Modules,Potentiometer,IC Socket,Relay,Connector.Our parts cover such applications as commercial,industrial, and automotives areas.

We are looking forward to setting up business relationship with you and hope to provide you with the best service and solution. Let us make a better world for our industry!



## Contact us

Tel: +86-755-8981 8866 Fax: +86-755-8427 6832

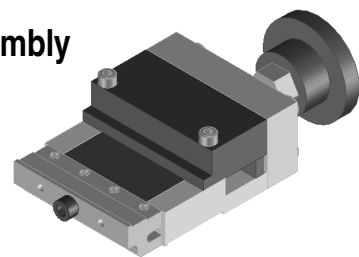
Email & Skype: info@chipsmall.com Web: www.chipsmall.com

Address: A1208, Overseas Decoration Building, #122 Zhenhua RD., Futian, Shenzhen, China





**EXTreme PowerMass™ Right Angle Plug Assembly  
Stiffener Removal Tool  
Instruction Sheet  
Part No. 62202-3600**



**FEATURES**

% This tool is designed for removal and reinstallation of the top metal stiffener of a connector module.

**SCOPE**

Products: EXTreme PowerMass Right Angle Plug Assemblies (75555 series). See Product List below for specific part numbers.

**Product List**

The following is a partial list of the product order numbers and their specifications this tool is designed to run. Updates to this list are available on [www.molex.com](http://www.molex.com).

Assembly Series No. And Description	Assembly Order No.					
75555 Right Angle Plug Assemblies	75555-1000	75555-1002	75555-1003	75555-1004	75555-1005	75555-1006
	75555-1007	75555-1008	75555-1009	75555-1010	75555-1021	75555-1025
	75555-1026	75555-1027	75555-1031	75555-1032		
	75555-1100	75555-1102	75555-1108			

**DESCRIPTION**

The Stiffener Removal Tool consists of a slide that extends (to push the stiffener off the connectors) or retracts (to pull the stiffener onto the connectors). A series of pins engage the holes in the stiffener for removal. The press block drives the flat edge of the stiffener for reinstallation. See figure 1.

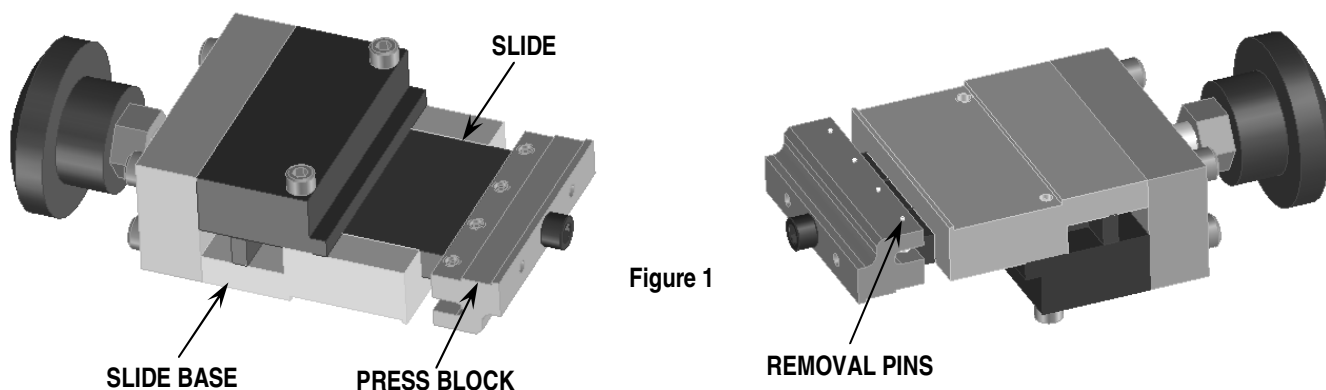
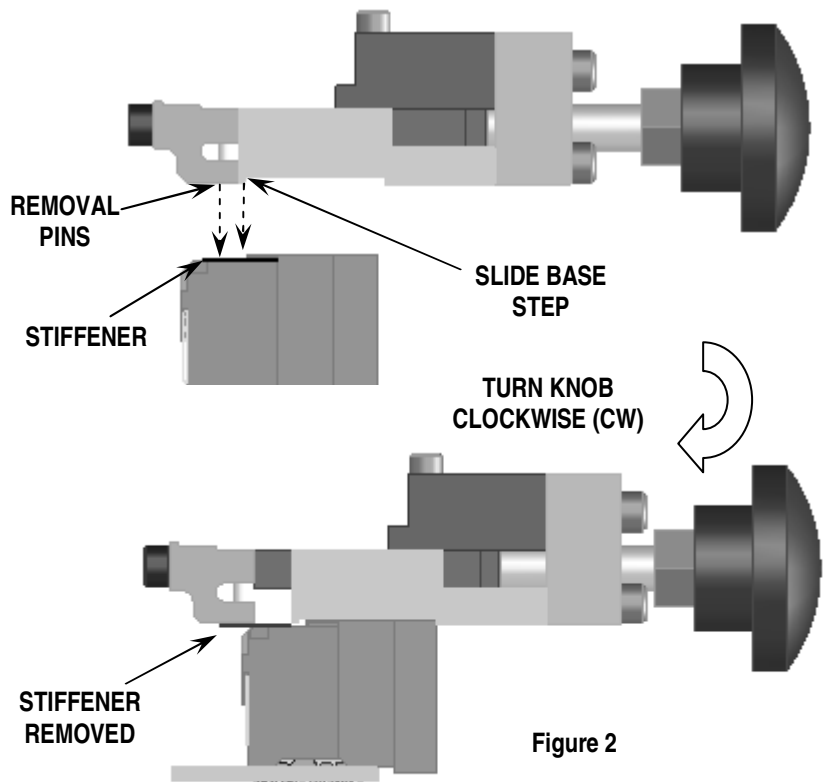


Figure 1

### Metal Stiffener Removal

1. Place the tool's removal pins into the round holes of the metal stiffener. Align the step on the slide base with the step on the connectors.
2. Rotate the knob clockwise (CW) to position the step on the slide base so it will push against the connector housing. Continue turning the knob so the metal stiffener will be pushed off the connectors. See Figure 2.
3. For excessively long assemblies, it may be necessary to gradually remove the stiffener by moving the removal tool along the length of the assembly to avoid bending the stiffener.
4. The metal stiffener should now be free of the wafer modules and selected connector(s) can be replaced. The rear stiffener does not need to be removed to access the connectors.



### Metal Stiffener Replacement

1. To do this, align the metal stiffener in the proper position with all individual modules. See Figure 3. Start the metal stiffener onto the modules by hand.

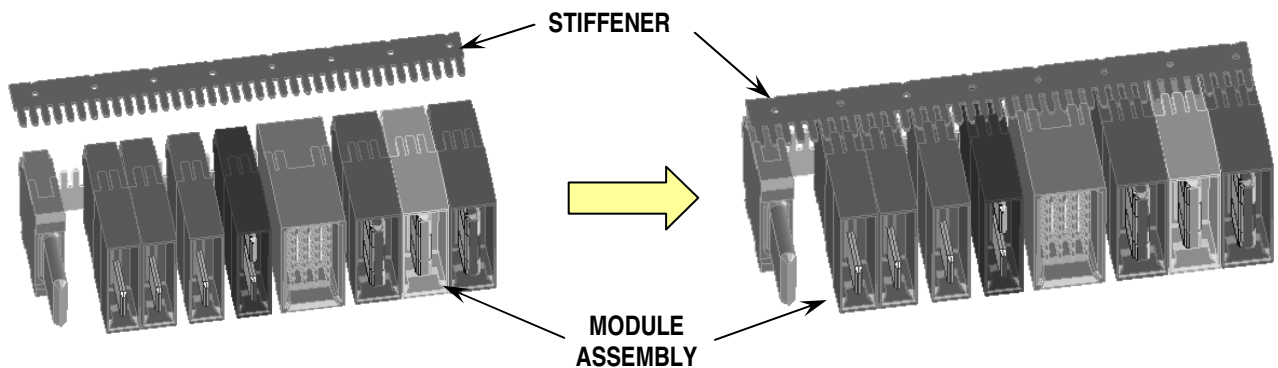


Figure 3



2. After the metal stiffener is positioned correctly on the module assembly, place the Stiffener Removal Tool on the connectors as shown in Figure 4. The installation of the metal stiffener does not use the removal pins.
3. Position the tool so it will fit over the connectors. Turn the knob in either direction allowing the tool to open or close enough so the module assembly fits between the press block and the stiffener locator. The stiffener locator should touch the straight edge of the metal stiffener. See Figure 4.
4. Turn the knob on the tool counter clockwise (CCW) so the stiffener locator moves toward the press block. See Figure 5. For excessively long assemblies it may be necessary to gradually install the stiffener by moving the tool along the length of the assembly.

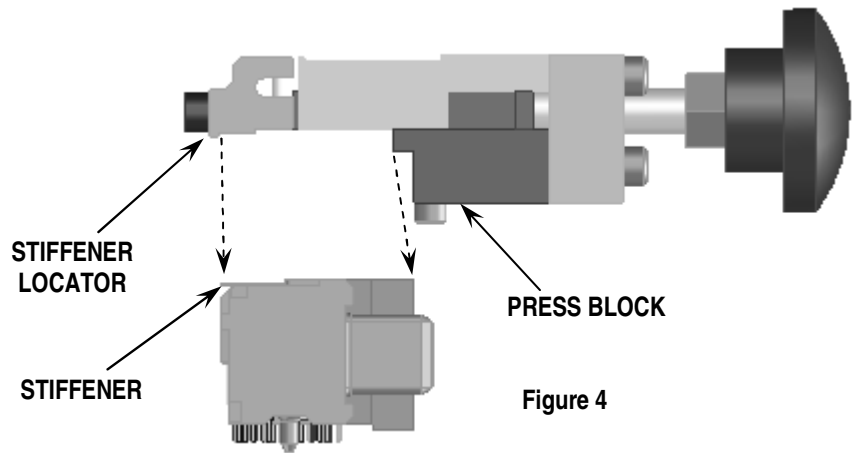


Figure 4

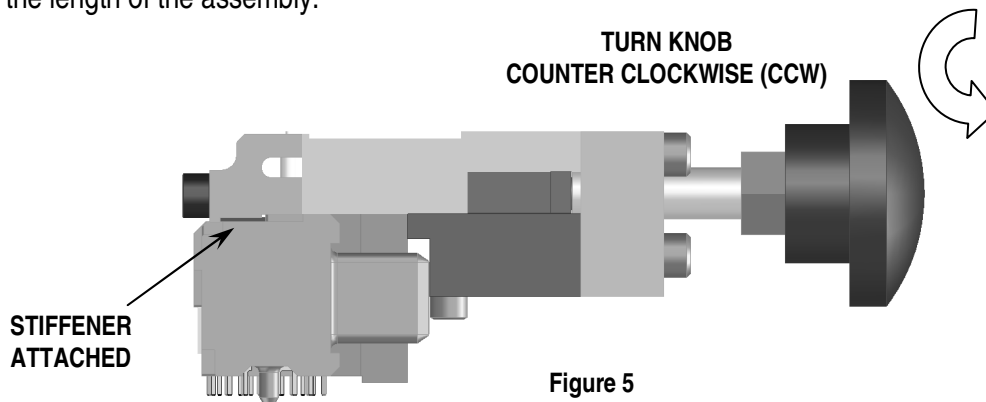


Figure 5

5. Do not turn the knob excessively. When the knob becomes difficult to turn, this is an indication that the stiffener is seated fully.

## Maintenance

It is recommended that each operator of the tool be made aware of, and responsible for, the following maintenance steps:

1. Remove dust, moisture, and other contaminants with a clean brush, or soft, lint free cloth.
2. Do not use any abrasive materials that could damage the tool.
3. Make certain all pins; pivot points and bearing surfaces are protected with a thin coat of high quality machine oil. Do not oil excessively.
4. When tool is not in use, store in a clean, dry area.

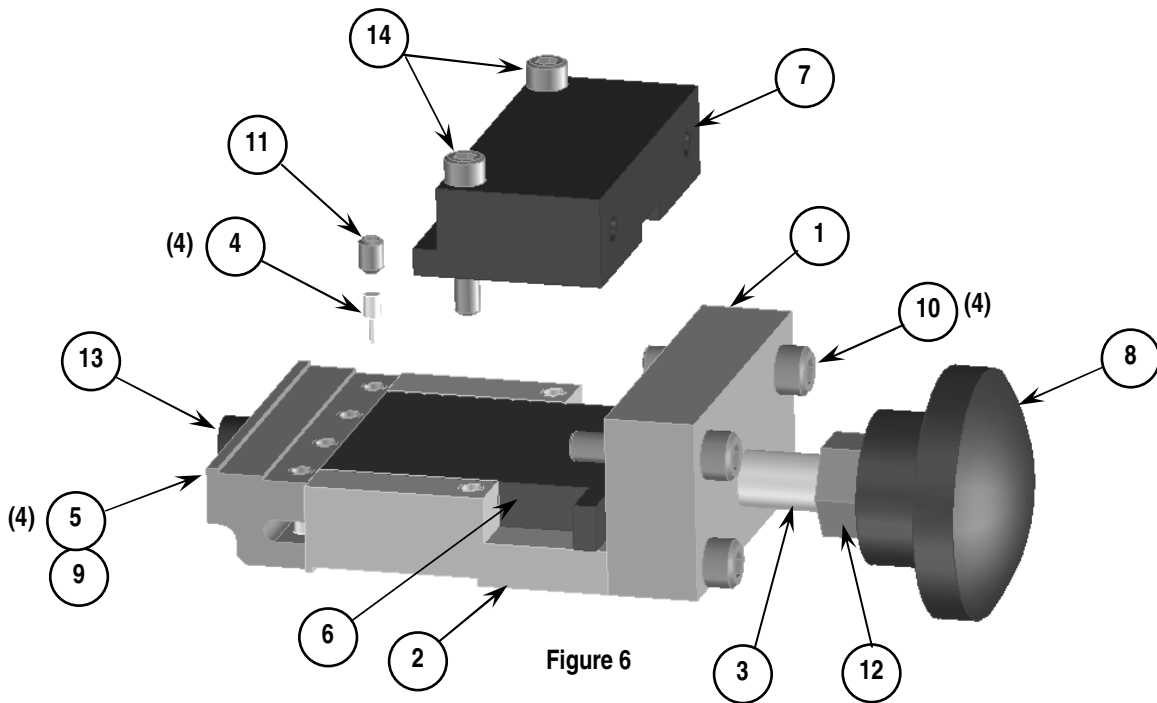
**CAUTION: Molex specifications are valid only when used with Molex connectors and tooling.**

**PARTS LIST**

Item	Order No	Description	Quantity
	<b>62202-3600</b>	<b>EXTreme PowerMass Stiffener Removal Tool</b>	<b>(Figure 6)</b>
1	62201-6204	Stop	1
2	62202-2073	Slide Base	1
3	62202-2076	Press Screw	1
4	62202-2624	Removal Pin	4
5	62202-3621	Stiffener Locator	1
6	62202-3672	Slide	1
7	62202-3675	Press Block	1
8	63700-1936	Knob, Plastic Fluted	1
9	N/A	1/8" diameter by 1/2" long Dowel Pin	2**
10	N/A	#8-32 by 0.75 long SHCS	4**
11	N/A	#6-32 by 0.19 long Set Screw	4**
12	N/A	5/16-18 Hex Nut	1**
13	N/A	#8-32 by 0.87 long SHCS	1**
14	N/A	#6-32 by 3/4 long SHCS	2**

\*\* Available from an industrial supply company such as MSC (1-800-645-7270).

**Assembly Drawing**



**Americas Headquarters**  
 Lisle, Illinois 60532 U.S.A.  
 1-800-78MOLEX  
 amerinfo@molex.com

**Far East North Headquarters**  
 Yamato, Kanagawa, Japan  
 81-462-65-2324  
 feninfo@molex.com

**Far East South Headquarters**  
 Jurong, Singapore  
 65-6-268-6868  
 fesinfo@molex.com

**European Headquarters**  
 Munich, Germany  
 49-89-413092-0  
 eurinfo@molex.com

**Corporate Headquarters**  
 2222 Wellington Ct.  
 Lisle, IL 60532 U.S.A.  
 630-969-4550  
 Fax: 630-969-1352

Visit our Web site at <http://www.molex.com>