



Chipsmall Limited consists of a professional team with an average of over 10 year of expertise in the distribution of electronic components. Based in Hongkong, we have already established firm and mutual-benefit business relationships with customers from,Europe,America and south Asia,supplying obsolete and hard-to-find components to meet their specific needs.

With the principle of “Quality Parts,Customers Priority,Honest Operation,and Considerate Service”,our business mainly focus on the distribution of electronic components. Line cards we deal with include Microchip,ALPS,ROHM,Xilinx,Pulse,ON,Everlight and Freescale. Main products comprise IC,Modules,Potentiometer,IC Socket,Relay,Connector.Our parts cover such applications as commercial,industrial, and automotives areas.

We are looking forward to setting up business relationship with you and hope to provide you with the best service and solution. Let us make a better world for our industry!



Contact us

Tel: +86-755-8981 8866 Fax: +86-755-8427 6832

Email & Skype: info@chipsmall.com Web: www.chipsmall.com

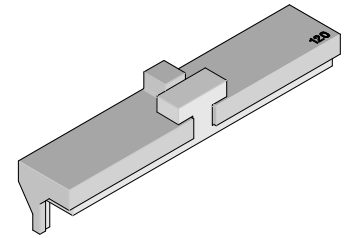
Address: A1208, Overseas Decoration Building, #122 Zhenhua RD., Futian, Shenzhen, China





**HS Dock™
Upper Housing
Removal Tool**

**Application Tooling
Specification Sheet**



Order No. 62202-4100

FEATURES

- This tool is designed for the removal of the Upper Housing from a Right Angle High Speed Dock™ Receptacle Assembly.
- Refer to 62202-3400 Wafer Sub-Assembly Extraction Tool which is used with this tool for full removal of Right Angle High Speed Dock™ Receptacle from a printed circuit board.

SCOPE

Products: Right Angle High Speed Dock™ Receptacle Assembly, 75019 Series, (120 Circuit Size). See Product List below for specific part numbers.

Product List

The following is a partial list of the product order numbers and their specifications this tool is designed to run. Updates to this list are available on www.molex.com.

Series No.	Circuit Size	Assembly Order Number		
75019	120	75019-0014	75019-7214	75019-7314

Tool Setup

1. Place the bottom plate of this tool over the connector. Be sure the plates are in the correct position allowing the tooling fingers to be between the adjacent board locks. See Figure 1.
2. Position the top plate on over the bottom plate and slide the slot under the “T” in the lower plate.
3. Be sure the top plate tooling finger is in the position over the lower tooling finger as far as it will go. See Figure 2.

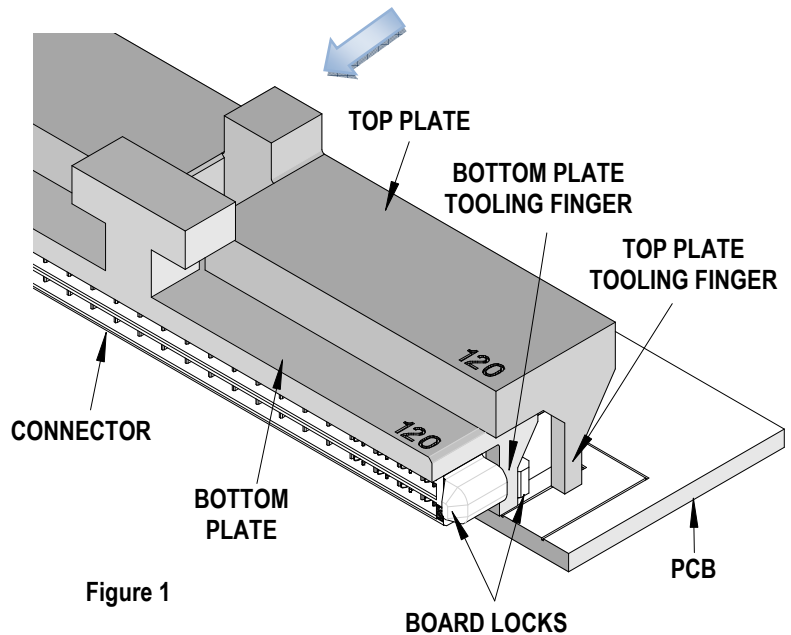


Figure 1

Tool Operation

1. Position a pair of pliers over the top plate and the “T” in the bottom plate. Squeeze the handles of the pliers until the jaws clamp firmly onto both plates. See Figure 2.
2. While applying pressure to the pliers handles, rock back and forth until the upper housing is pulled straight out of the lower housing. See Figure 3.

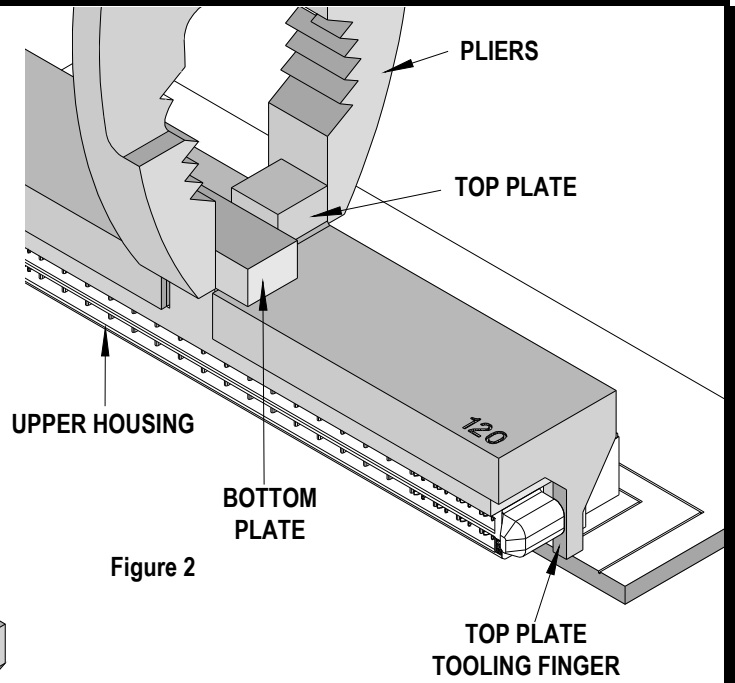


Figure 2

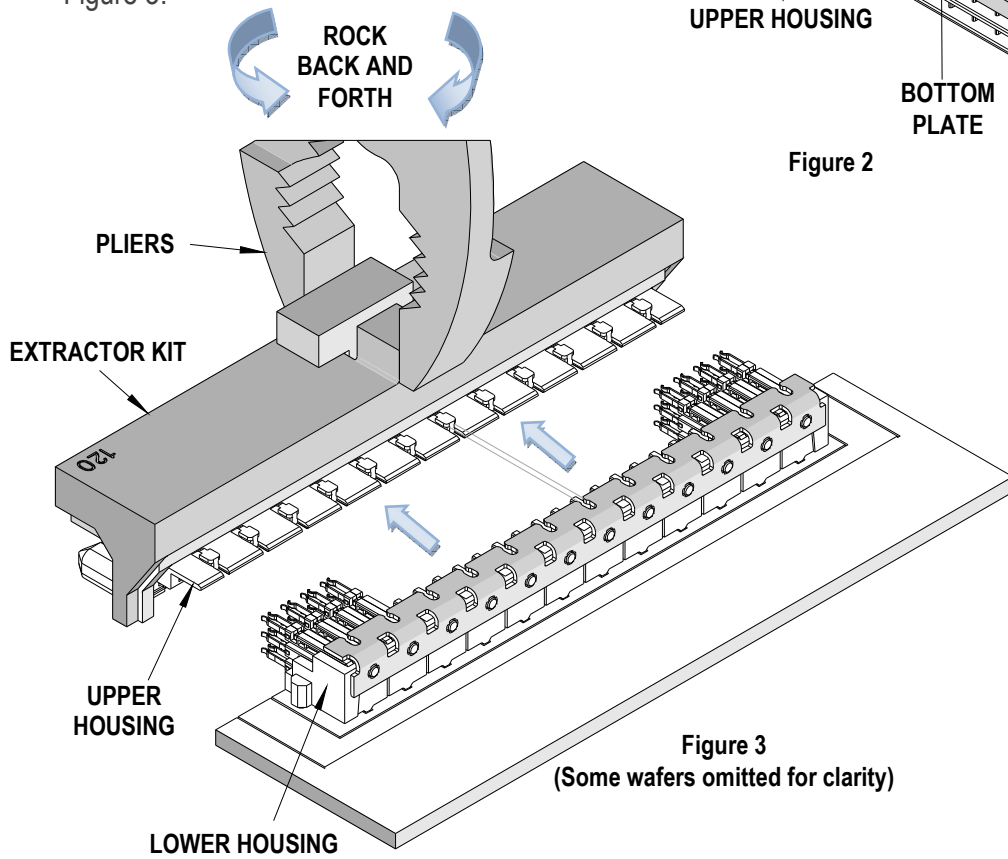


Figure 3
(Some wafers omitted for clarity)

CAUTION: Molex application tooling specifications are valid only when used with Molex connectors and tooling.

Contact Information

For more information on Molex application tooling please contact Molex at 1-800-786-6539.

Visit our Web site at <http://www.molex.com>