



Chipsmall Limited consists of a professional team with an average of over 10 year of expertise in the distribution of electronic components. Based in Hongkong, we have already established firm and mutual-benefit business relationships with customers from,Europe,America and south Asia,supplying obsolete and hard-to-find components to meet their specific needs.

With the principle of “Quality Parts,Customers Priority,Honest Operation,and Considerate Service”,our business mainly focus on the distribution of electronic components. Line cards we deal with include Microchip,ALPS,ROHM,Xilinx,Pulse,ON,Everlight and Freescale. Main products comprise IC,Modules,Potentiometer,IC Socket,Relay,Connector.Our parts cover such applications as commercial,industrial, and automotives areas.

We are looking forward to setting up business relationship with you and hope to provide you with the best service and solution. Let us make a better world for our industry!



Contact us

Tel: +86-755-8981 8866 Fax: +86-755-8427 6832

Email & Skype: info@chipsmall.com Web: www.chipsmall.com

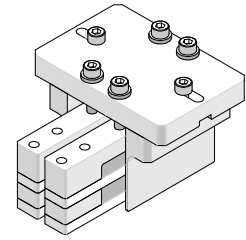
Address: A1208, Overseas Decoration Building, #122 Zhenhua RD., Futian, Shenzhen, China





**2-by-2
zQSFP+
Extraction Tool**

**Application Tooling
Specification Sheet**



Order No. 62202-5220

FEATURES

- Used for removal of a zQSFP+ assembly from a PCB
- Removes connector from the PCB without damage to the board
- Use tool 62202-5260 to insert 171565 and 171722 connector assemblies
- Use tool 62202-5310 to insert 172564 connector assemblies

SCOPE

Products: zQuad Small Form-factor Pluggable Plus (zQSFP+) Cage Assembly, with Elastomeric Gasket or Metal EMI Gasket, 2 by 2 Enhanced EMI Cage Construction.

Connector Series No.	Connector Order No.					
171565	171565-0001	171565-0002	171565-0003	171565-2001	171565-2002	171565-2003
171722	171722-2001	171722-2002	171722-2003	171722-2062		
172564	171564-2001	171564-2002	171564-2003			

Notes:

1. See the following pages for tooling operation instructions.
2. These tools require a “Keep Out Zone” around the connector free of components. The right and left sides should be 0.08” (2mm). See Figure 1.

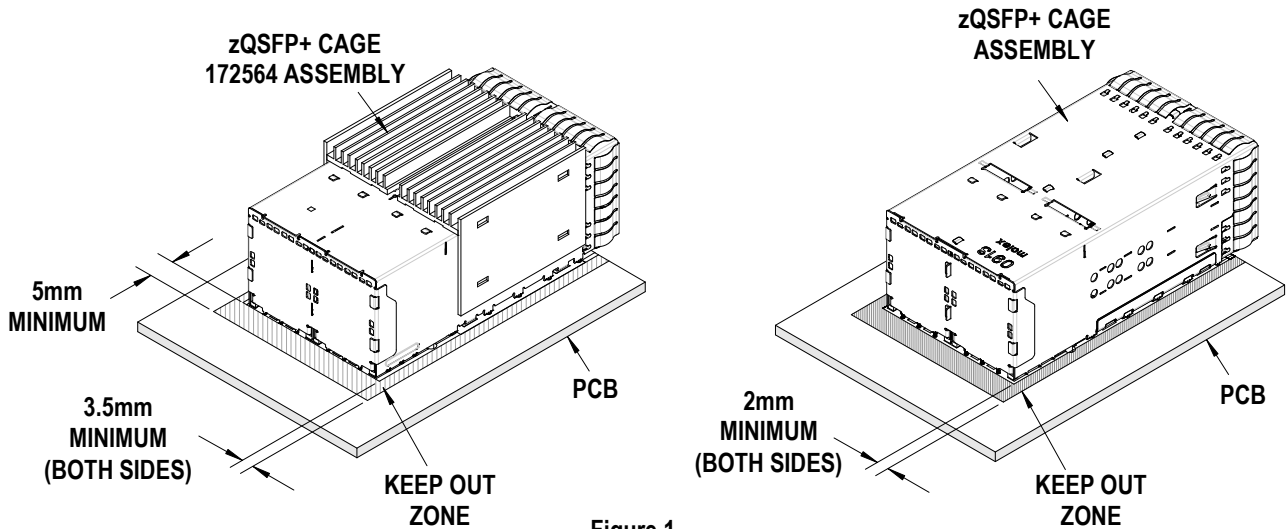


Figure 1

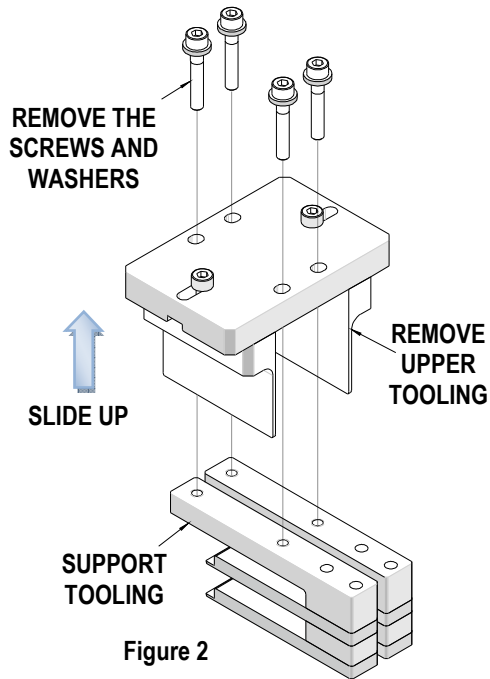


Figure 2

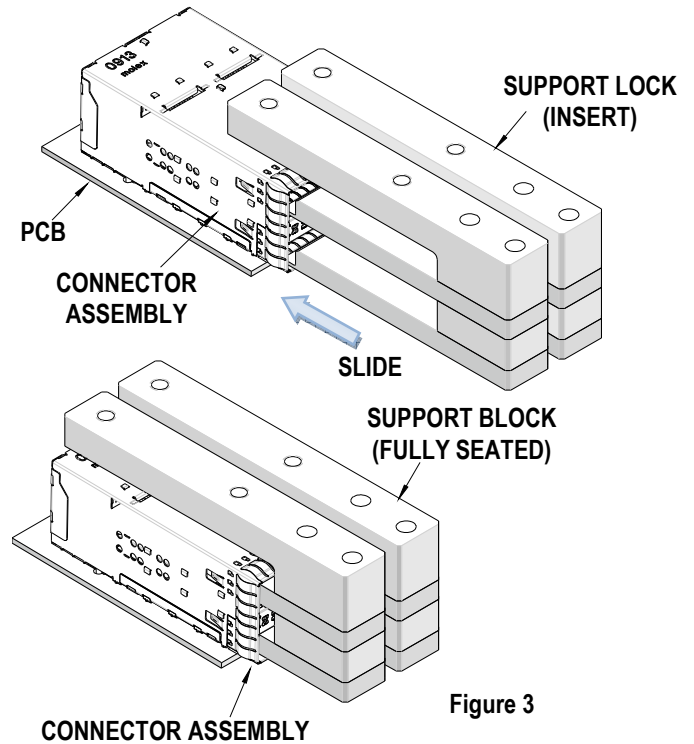


Figure 3

Description

The following instructions are used for removing a 2-by-2 connector from a PCB:

Operation

1. Disassemble the (2) halves by unscrewing the screws on the top of the “upper tooling”. See Figure 2.
2. Remove the upper tooling from the support tooling.
3. Insert the support tooling into the cage ports until it is fully seated. See Figure 3.
4. Place the top removal assembly over the support tooling and the cage assembly, aligning the screw holes of the top removal assembly with the threaded holes in the support blocks. See Figure 4.
5. If the top removal assembly does not fit over the cage, the side supports of the top assembly can be adjusted farther from the cage sides.
6. Place the washers and M5 screws into the holes in the top removal assembly; turn the screws clockwise until they are started in the support blocks.

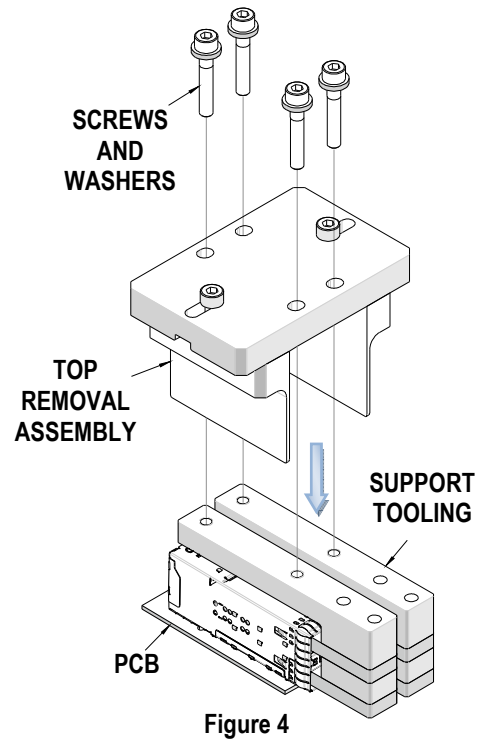


Figure 4

- Using a 4mm hex wrench, tighten each screw, one turn in an alternating pattern until the cage assembly is removed from the PCB. See Figure 5.

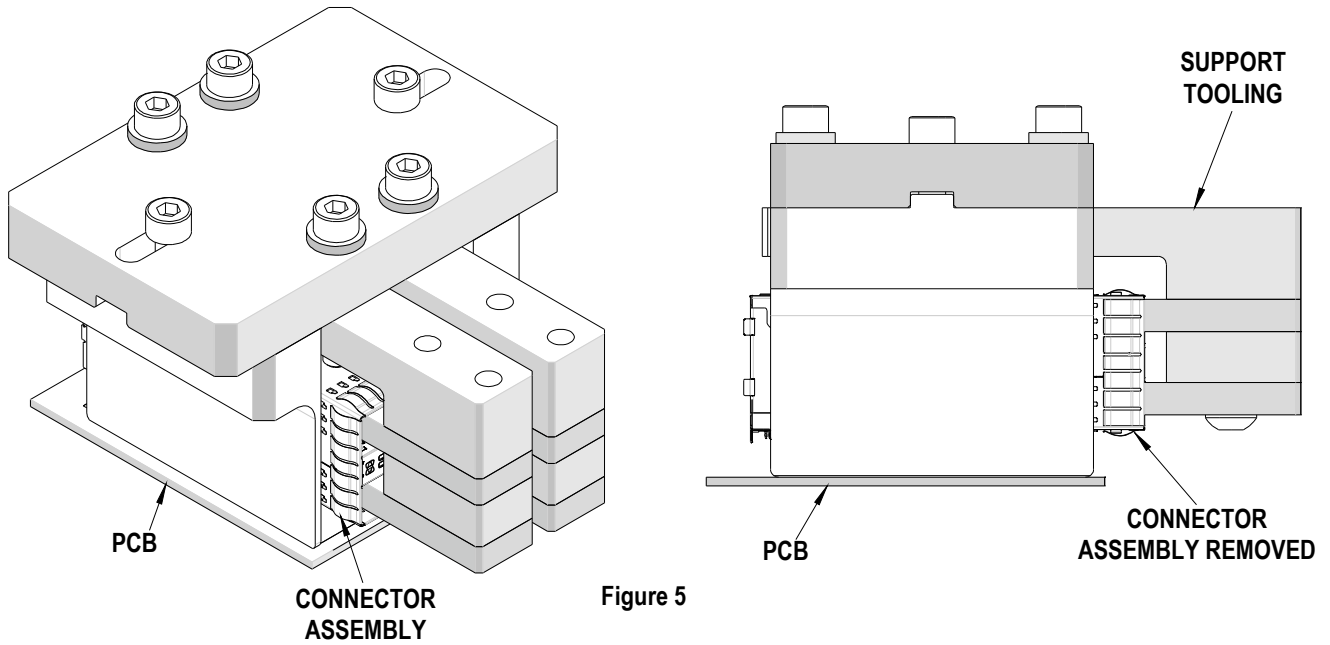


Figure 5

CAUTION: Molex application tooling specifications are valid only when used with Molex connectors and tooling.

Application Tooling Support

Phone: +1-402-458-TOOL (8665)
E-Mail: applicationtooling@molex.com
Website: www.molex.com/applicationtooling