



Chipsmall Limited consists of a professional team with an average of over 10 year of expertise in the distribution of electronic components. Based in Hongkong, we have already established firm and mutual-benefit business relationships with customers from,Europe,America and south Asia,supplying obsolete and hard-to-find components to meet their specific needs.

With the principle of “Quality Parts,Customers Priority,Honest Operation,and Considerate Service”,our business mainly focus on the distribution of electronic components. Line cards we deal with include Microchip,ALPS,ROHM,Xilinx,Pulse,ON,Everlight and Freescale. Main products comprise IC,Modules,Potentiometer,IC Socket,Relay,Connector.Our parts cover such applications as commercial,industrial, and automotives areas.

We are looking forward to setting up business relationship with you and hope to provide you with the best service and solution. Let us make a better world for our industry!



Contact us

Tel: +86-755-8981 8866 Fax: +86-755-8427 6832

Email & Skype: info@chipsmall.com Web: www.chipsmall.com

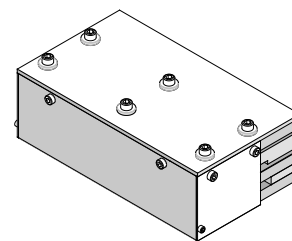
Address: A1208, Overseas Decoration Building, #122 Zhenhua RD., Futian, Shenzhen, China





**2-by-12
Stacked Multi-Port
Removal Tool**

**Application Tooling
Specification Sheet**



Order No. 62202-5290

FEATURES

- Lightweight tool used in the removal of Stacked Multi-Port connectors in a PCB
- Removes connector in a PCB without damage to the board
- Use tool 62202-5280 for inserting connectors

SCOPE

Products: Small Form-factor Pluggable (zSFP+™) 2-by-12 Multi-Port Connector with Press-fit PC Tails.

Connector Series No.	Connector Order No.					
170071	170071-1201	170071-1211	170071-1212	170071-1213	170071-1214	170071-1215
171846	171846-1201	171846-1211	171846-1212	171846-1213	171846-1214	171846-1215

Notes:

1. See the following pages for tooling operation instructions.
2. These tools require a “Keep Out Zone” around the connector free of components. The right and left sides should be 0.08” (2mm). The rear of the connector should be .197” (5.0mm). See Figure 1.

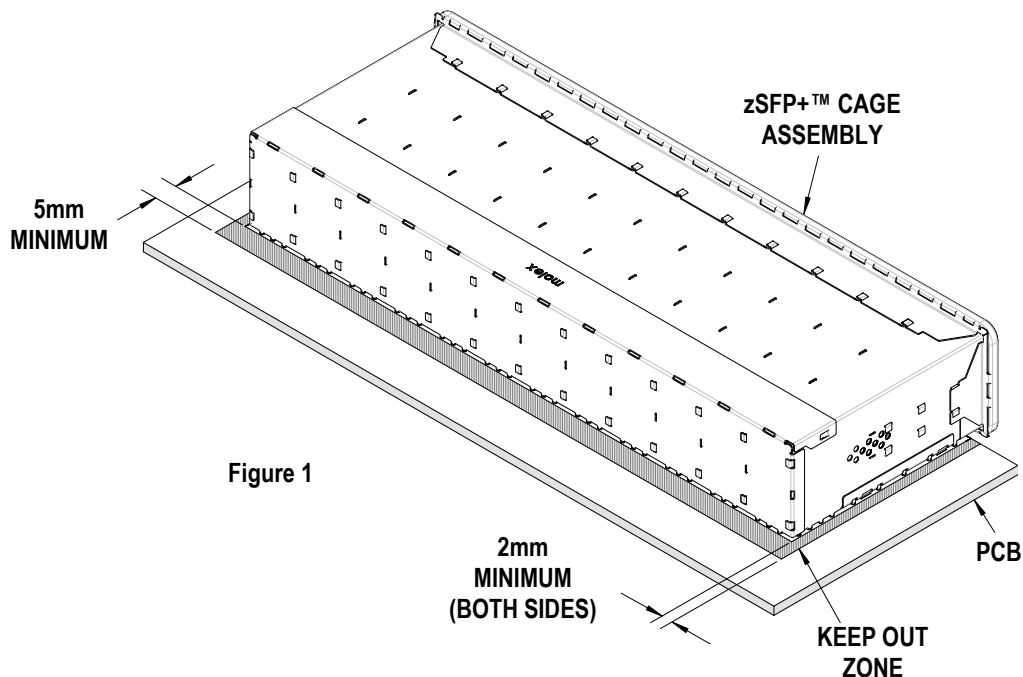


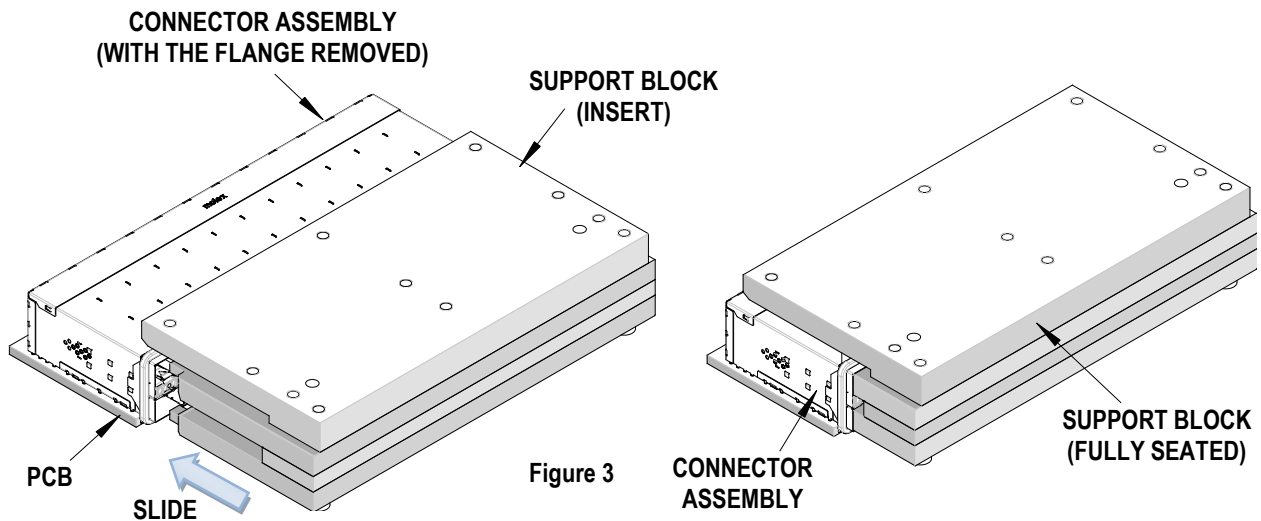
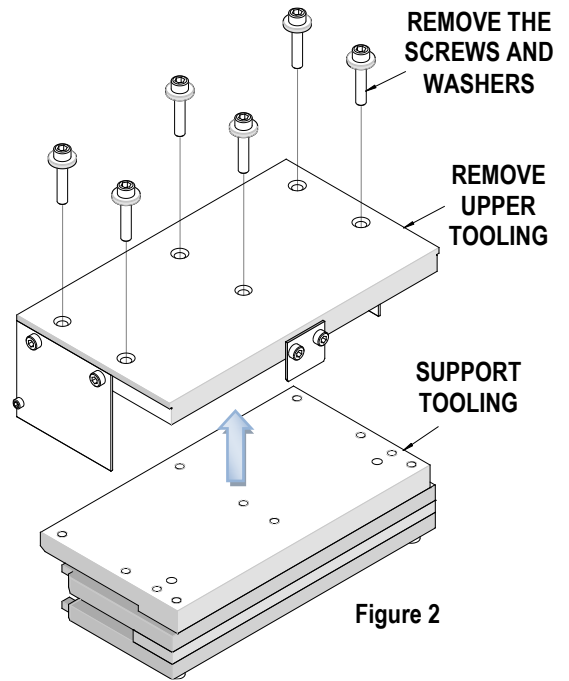
Figure 1

Description

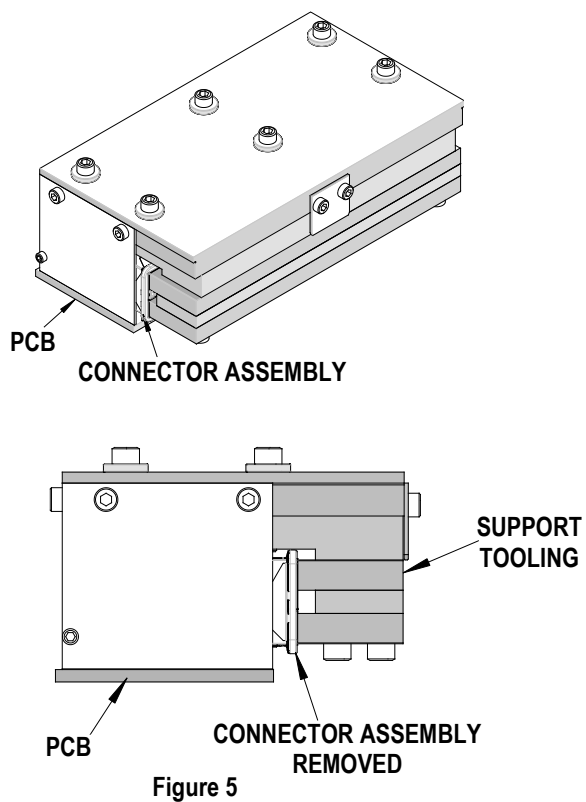
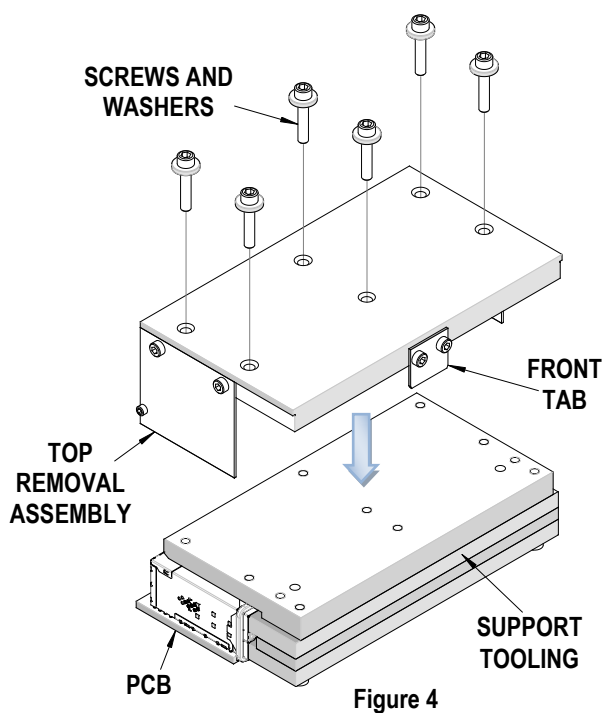
The following Instructions are used for removing a 2 by 12 connector from a PCB.

Operation

1. Disassemble the (2) halves as delivered by unscrewing the screws on the top of the “upper tooling”. See Figure 2.
2. Remove the upper tooling from the support tooling.
3. For zSFP+ product remove the flange if applicable, from the connector assembly to ensure full insertion of support tooling into connector ports.
4. Insert the support block assembly into the connector assembly until it is fully seated. See Figure 3.



5. Place the top removal assembly over the support block and the connector assembly, aligning the front tab of the top removal assembly with the back edge of the support block. See Figure 4.
6. Now place the washers and screws into the holes in the top removal assembly and turn until seated on the top plate, using a 5/32” hex wrench to tighten the screws.
7. Tighten each screw, one turn in an alternating pattern until the connector assembly is removed from the PCB. See Figure 5.



CAUTION: Molex application tooling specifications are valid only when used with Molex connectors and tooling.

Contact Information

For more information on Molex application tooling please contact Molex at 1-800-786-6539.

Visit our website at <http://www.molex.com>