



Chipsmall Limited consists of a professional team with an average of over 10 year of expertise in the distribution of electronic components. Based in Hongkong, we have already established firm and mutual-benefit business relationships with customers from,Europe,America and south Asia,supplying obsolete and hard-to-find components to meet their specific needs.

With the principle of “Quality Parts,Customers Priority,Honest Operation,and Considerate Service”,our business mainly focus on the distribution of electronic components. Line cards we deal with include Microchip,ALPS,ROHM,Xilinx,Pulse,ON,Everlight and Freescale. Main products comprise IC,Modules,Potentiometer,IC Socket,Relay,Connector.Our parts cover such applications as commercial,industrial, and automotives areas.

We are looking forward to setting up business relationship with you and hope to provide you with the best service and solution. Let us make a better world for our industry!



## Contact us

Tel: +86-755-8981 8866 Fax: +86-755-8427 6832

Email & Skype: info@chipsmall.com Web: www.chipsmall.com

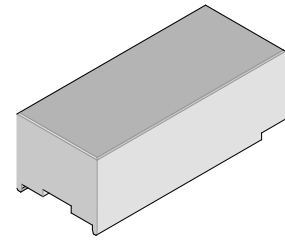
Address: A1208, Overseas Decoration Building, #122 Zhenhua RD., Futian, Shenzhen, China





**1-by-1 SFP+  
Insertion Tool**

**Application Tooling  
Specification Sheet**



**Order No. 62202-9744**

**FEATURES**

- Lightweight tool used in the insertion of a SFP+ connector in a PCB
- Inserts connector to a PCB without damage to the board
- This tool is used in place of tool 62202-9740 when the “Keep Out Zone” is reduced to 1.20mm. See Figure 1.

**SCOPE**

Products: Small Form-factor Pluggable (SFP+) Single Port Connector with Press-fit PC Tails.

Connector Series No.	Connector Order No.		
74754	74754-0101	74754-0102	74754-0105

**Notes:**

1. See the following pages for tooling operation instructions.
2. These tools require a “Keep Out Zone” around the connector free of components. The rear of the connector should be .047” (1.20mm). The right and left sides should be .047” (1.20mm). See Figure 1.

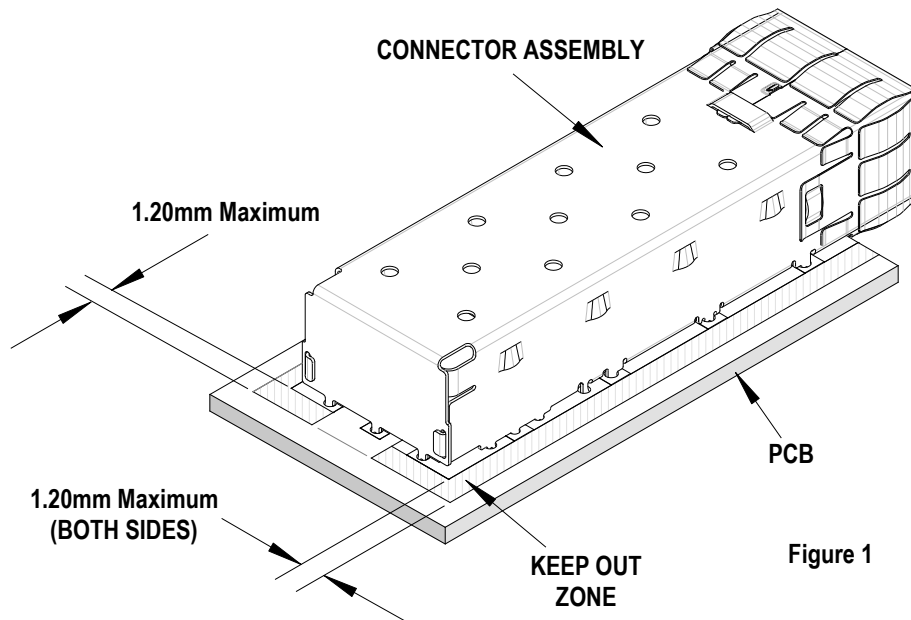


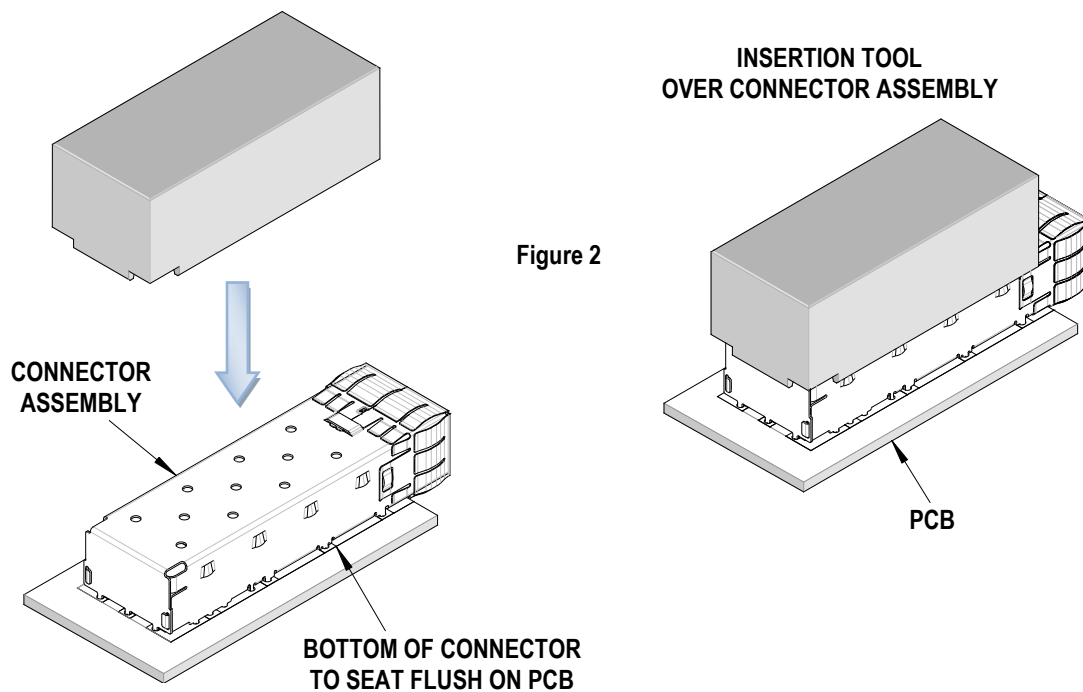
Figure 1

## Description

The following Instructions are used for inserting connectors 1 by 1 into a PCB.

## Operation

1. Place a connector assembly on the PCB.
2. Place the tool on the connector assembly (closed end to the back end of the connector). See Figure 2.
3. Place tool, connector, and PCB, in a press of suitable size and force, and seat the connector assembly shown. The support under the PCB must have clearance for the connector pins.



Visit our Web site at <http://www.molex.com>