



Chipsmall Limited consists of a professional team with an average of over 10 year of expertise in the distribution of electronic components. Based in Hongkong, we have already established firm and mutual-benefit business relationships with customers from,Europe,America and south Asia,supplying obsolete and hard-to-find components to meet their specific needs.

With the principle of “Quality Parts,Customers Priority,Honest Operation,and Considerate Service”,our business mainly focus on the distribution of electronic components. Line cards we deal with include Microchip,ALPS,ROHM,Xilinx,Pulse,ON,Everlight and Freescale. Main products comprise IC,Modules,Potentiometer,IC Socket,Relay,Connector.Our parts cover such applications as commercial,industrial, and automotives areas.

We are looking forward to setting up business relationship with you and hope to provide you with the best service and solution. Let us make a better world for our industry!



## Contact us

Tel: +86-755-8981 8866 Fax: +86-755-8427 6832

Email & Skype: info@chipsmall.com Web: www.chipsmall.com

Address: A1208, Overseas Decoration Building, #122 Zhenhua RD., Futian, Shenzhen, China





## Standard Component Parts

The component part you are reviewing can potentially be used in multiple Molex tools or multiple Molex tool kits.

Example: A punch or anvil is a component of an applicator. The applicator order no. is the upper lever part no. you will need to search for on Molex.com.

Please enter the upper level Molex tooling order number on the Molex Web search to find more information about this component part.

Please review the complete tool's Application Tooling Specification document on the Molex Website.

To understand how to find the proper tooling and the proper tooling documentation on the Molex Website please review the following instructions.



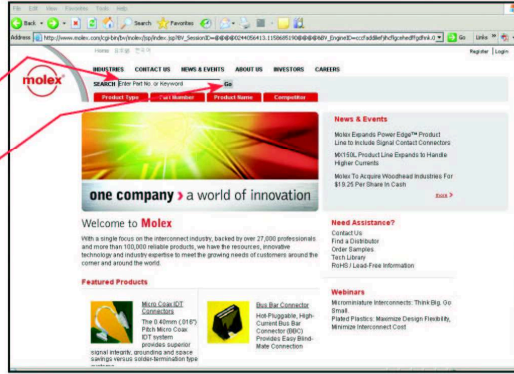
## ▶ Tooling How to Find Tooling on [www.molex.com](http://www.molex.com)

Step 1: Go to [www.molex.com](http://www.molex.com)

Step 2: Enter Connector Part Number Into Search

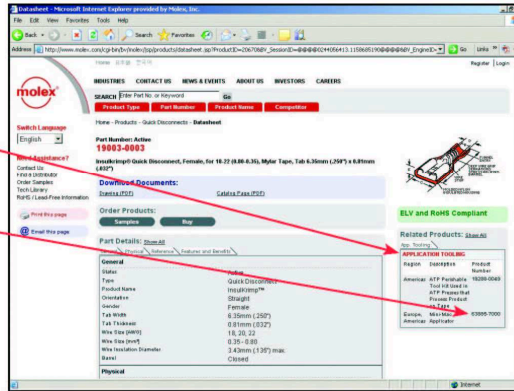
Enter Part Number Here

Hit the "GO" Button



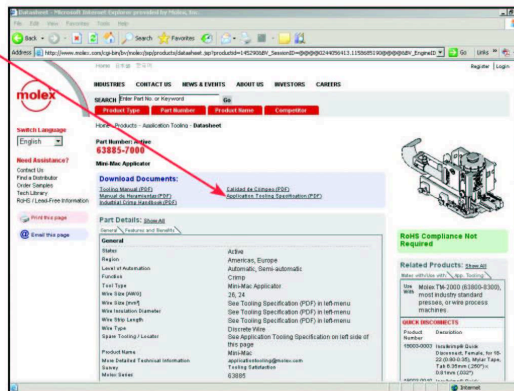
Step 3: Review Product Page for Tooling Links on Right

Review tooling link(s) and double click black link

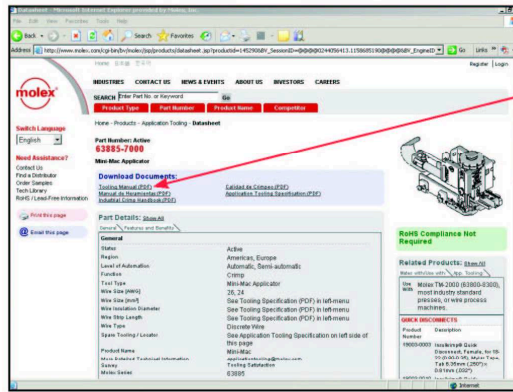


Step 4: Review Tooling Page Application Tooling Specification

Application Tooling Specification sheets have all tooling information: terminals used in tool, crimp height, pull force, perishable tool kits, repair kits, how to measure go/no-go, list of products processed, new product number, old product number, wire strip length, part list for tooling components, exploded view of installation and maintenance and warranty information

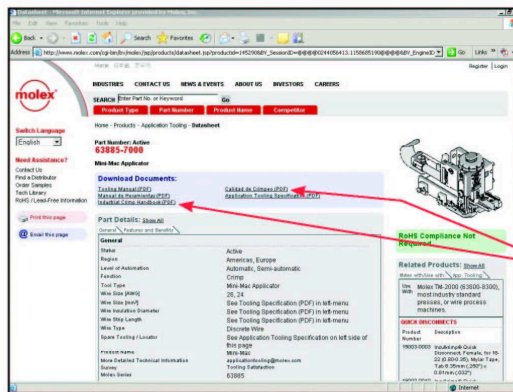


## ▶ Tooling How to Find Tooling on [www.molex.com](http://www.molex.com)



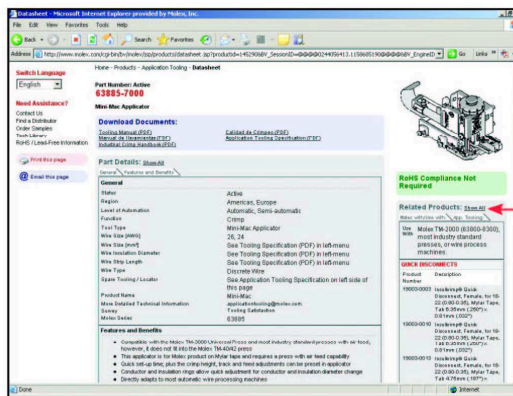
**Step 4: Review Tooling Page Tooling Manual**

The Tooling Manual has all of the basic information with regard to the tool. Not all tools have a manual



**Step 5: Review Tooling Page Crimp Quality Handbook**

The Crimp Quality Handbook has all of the basic information regarding a proper crimp. Open barrel (CPD) and closed barrel (TBO) have their own quality manuals linked on the web. There are English and Spanish versions of both manuals.



**Other Information on Page**

Tooling page will show all of the web-published terminals that the tool will run



[www.molex.com/product/apptool/](http://www.molex.com/product/apptool/)