



Chipsmall Limited consists of a professional team with an average of over 10 year of expertise in the distribution of electronic components. Based in Hongkong, we have already established firm and mutual-benefit business relationships with customers from,Europe,America and south Asia,supplying obsolete and hard-to-find components to meet their specific needs.

With the principle of “Quality Parts,Customers Priority,Honest Operation,and Considerate Service”,our business mainly focus on the distribution of electronic components. Line cards we deal with include Microchip,ALPS,ROHM,Xilinx,Pulse,ON,Everlight and Freescale. Main products comprise IC,Modules,Potentiometer,IC Socket,Relay,Connector.Our parts cover such applications as commercial,industrial, and automotives areas.

We are looking forward to setting up business relationship with you and hope to provide you with the best service and solution. Let us make a better world for our industry!



Contact us

Tel: +86-755-8981 8866 Fax: +86-755-8427 6832

Email & Skype: info@chipsmall.com Web: www.chipsmall.com

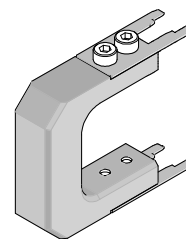
Address: A1208, Overseas Decoration Building, #122 Zhenhua RD., Futian, Shenzhen, China





Extractor Tool

Application Tooling Specification Sheet



Order No. 63824-3400

FEATURES

- This Extractor Tool is for opening the Secondary Lock from 65 Circuit CMX Receptacle.

SCOPE

Products: CMX Receptacle Connector Assembly, 65 Circuits, Right and Left Slide Orientation.

| Housing Series No | Housing Order No. | | | |
|-------------------|-------------------|-------------|-------------|-------------|
| 502725 | 502725-6511 | 502725-6512 | 502725-6521 | 502725-6522 |
| 560065 | 560065-6511 | 560065-6512 | 560065-6521 | 560065-6522 |

OPERATION:

Opening the (TPA) Secondary Lock

On a CMX receptacle assembly follow the steps below:

1. Insert the extractor tool into the (2) side slots of the (TPA) secondary lock on each sides until it stops. See Figure 1.

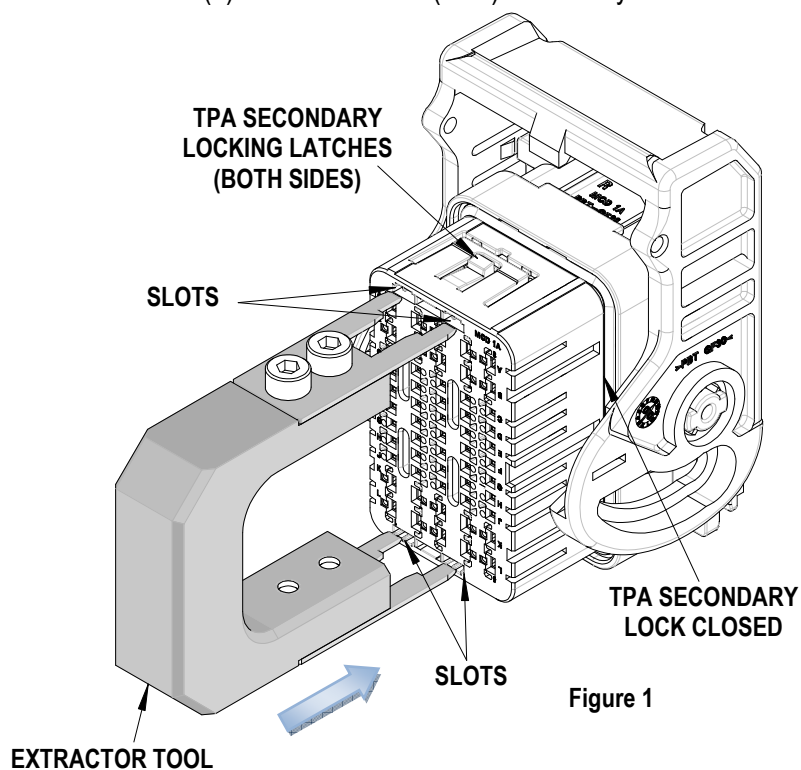

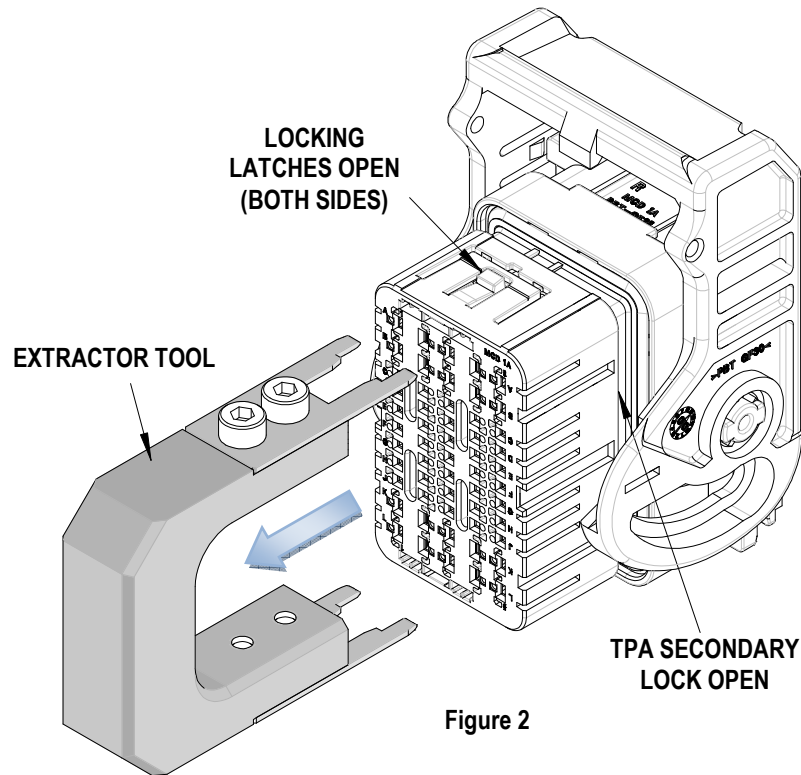


Figure 1

2. While keeping the extractor tool in this position pull down on the sides of the (TPA) secondary lock without touching the latches.
3. Pull the TPA out just enough so that the locking latches are visible.  **Do not remove the TPA.** See Figure 2.
4. Remove the extractor tool and check the position of the TPA.



CAUTION: Molex specifications are valid only when used with Molex terminals, applicators and tooling.

Molex does not offer repair parts for Extractor Tools due to the inexpensive nature of these tools.

Contact Information

For more information on Molex application tooling please contact Molex at 1-800-786-6539.

Visit our Web site at <http://www.molex.com>