



Chipsmall Limited consists of a professional team with an average of over 10 year of expertise in the distribution of electronic components. Based in Hongkong, we have already established firm and mutual-benefit business relationships with customers from,Europe,America and south Asia,supplying obsolete and hard-to-find components to meet their specific needs.

With the principle of “Quality Parts,Customers Priority,Honest Operation,and Considerate Service”,our business mainly focus on the distribution of electronic components. Line cards we deal with include Microchip,ALPS,ROHM,Xilinx,Pulse,ON,Everlight and Freescale. Main products comprise IC,Modules,Potentiometer,IC Socket,Relay,Connector.Our parts cover such applications as commercial,industrial, and automotives areas.

We are looking forward to setting up business relationship with you and hope to provide you with the best service and solution. Let us make a better world for our industry!



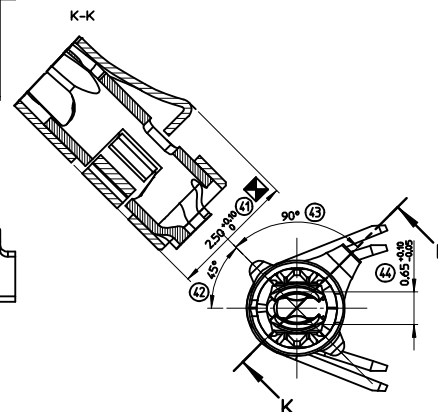
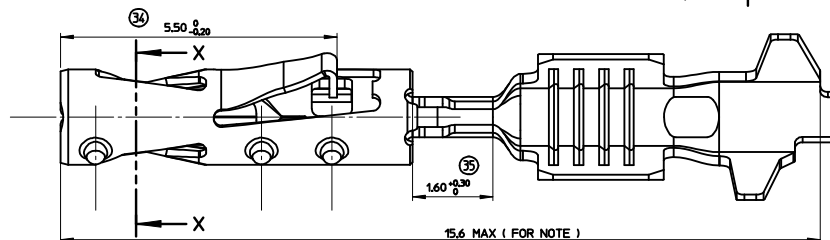
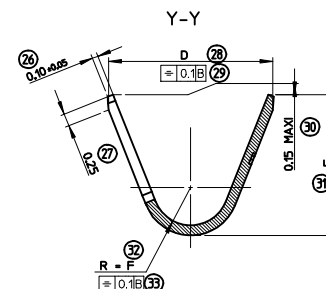
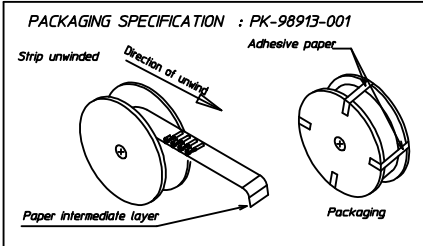
## Contact us

Tel: +86-755-8981 8866 Fax: +86-755-8427 6832


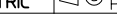
Email & Skype: [info@chipsmall.com](mailto:info@chipsmall.com) Web: [www.chipsmall.com](http://www.chipsmall.com)

Address: A1208, Overseas Decoration Building, #122 Zhenhua RD., Futian, Shenzhen, China





2	BOX TERMINAL	STAINLESS STEEL thickness=0.15 mm
1	BODY TERMINAL	high conductivity copper alloy thickness=0.2 mm
MARK	DESIGNATION	MATERIAL

UPDATED VIEWS EC NO: UAU2014-0160 DRAWN BY: SMITH CHECKED: HERRELIN APPR: BOWSER 2013/07/15 2013/07/31 2013/08/20		DESCRIPTION		GENERAL TOLERANCES (UNLESS SPECIFIED)  mm      INCH 4 PLACES ± .010      ± .0004 3 PLACES ± .010      ± .0004 2 PLACES ± .010      ± .0004 1 PLACE ± .010      ± .0004 0 PLACE ± .010      ± .0004  ANGULAR ± 2°		DIMENSION STYLE <b>MM ONLY</b>  DRAWN BY      DATE FPAROLARI      2007/09/17 CHECKED BY      DATE JDUCLIOS      2007/09/17 APPROVED BY      DATE LSTICEIR      2007/09/17 MATERIAL NO.		SCALE <b>20:1</b>  DESIGN UNITS <b>METRIC</b>  FIRST ANGLE  <b>PROJECTION</b>		TITLE  <b>CP RCPT TRM 0.6</b>    DOCUMENT NO. <b>SD-64322-001</b> SHEET NO. <b>1 OF 1</b>	
ITI		REV		DRAFT WHERE APPLICABLE MUST REMAIN WITHIN DIMENSIONS		SEE CHART SIZE A1		THIS DRAWING CONTAINS INFORMATION THAT IS PROPRIETARY TO MOLEX INCORPORATED AND SHOULD NOT BE USED WITHOUT WRITTEN PERMISSION			