



Chipsmall Limited consists of a professional team with an average of over 10 year of expertise in the distribution of electronic components. Based in Hongkong, we have already established firm and mutual-benefit business relationships with customers from,Europe,America and south Asia,supplying obsolete and hard-to-find components to meet their specific needs.

With the principle of "Quality Parts,Customers Priority,Honest Operation,and Considerate Service",our business mainly focus on the distribution of electronic components. Line cards we deal with include Microchip,ALPS,ROHM,Xilinx,Pulse,ON,Everlight and Freescale. Main products comprise IC,Modules,Potentiometer,IC Socket,Relay,Connector.Our parts cover such applications as commercial,industrial, and automotives areas.

We are looking forward to setting up business relationship with you and hope to provide you with the best service and solution. Let us make a better world for our industry!



## Contact us

Tel: +86-755-8981 8866 Fax: +86-755-8427 6832

Email & Skype: info@chipsmall.com Web: www.chipsmall.com

Address: A1208, Overseas Decoration Building, #122 Zhenhua RD., Futian, Shenzhen, China



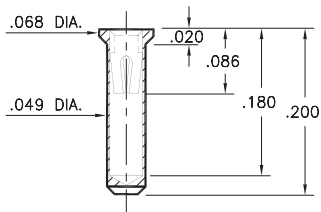
# PIN RECEPTACLES

FOR .015" - .025" DIAMETER PINS

## 0660

0660-0-15-XX-30-XX-10-0

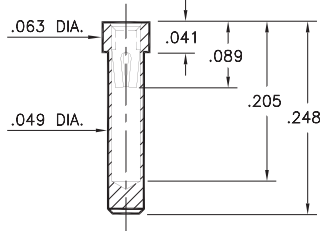
Solder mount in .051 min. mounting hole



## 0677

0677-0-15-XX-30-XX-10-0

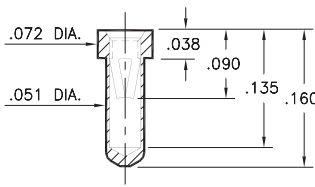
Solder mount in .051 min. mounting hole



## 0555

0555-0-15-XX-32-XX-10-0

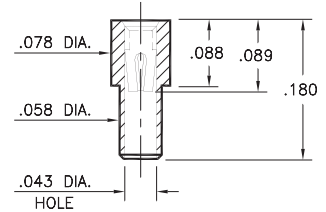
Solder mount in .053 min. mounting hole  
Also available on 16mm wide carrier tape:  
1,800 parts per 13" reel  
Order as: 0555-0-57-XX-32-XX-10-0



## 0558

0558-0-15-XX-30-XX-10-0

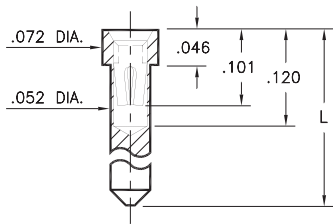
Solder mount in .061 min. mounting hole



## 0675/0679

067X-0-15-XX-30-XX-10-0

Solder mount in .054 min. mounting hole

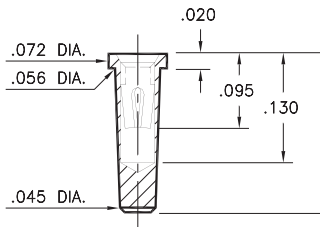


Basic Part Number	Length L
0675-0	.145
0679-0	.203

## 1065/1066/7065

X06X-0-15-XX-30-XX-10-0

Solder mount in .055 min. mounting hole

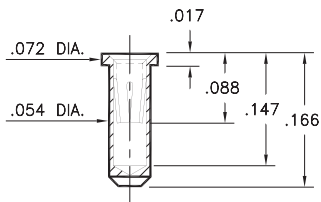


Basic Part Number	Length L
1065-0	.190
1066-0	.160
7065-0	.181

## 0682

0682-0-15-XX-32-XX-10-0

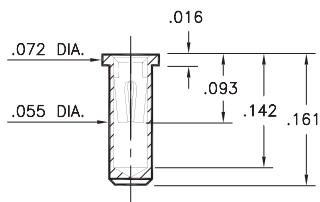
Solder mount in .056 min. mounting hole  
Also available on 16mm wide carrier tape:  
1,500 parts per 13" reel  
Order as: 0682-0-57-XX-32-XX-10-0



## 0667

0667-0-15-XX-30-XX-10-0

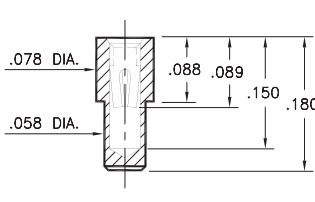
Solder mount in .057 min. mounting hole  
Also available on 16mm wide carrier tape:  
1,700 parts per 13" reel  
Order as: 0667-0-57-XX-30-XX-10-0



## 0665

0665-0-15-XX-30-XX-10-0

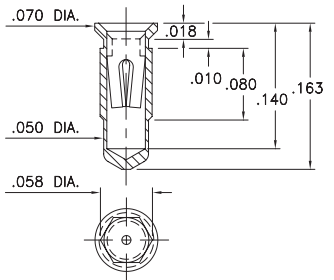
Solder mount in .061 min. mounting hole  
Also available on 16mm wide carrier tape:  
1,580 parts per 13" reel  
Order as: 0665-0-57-XX-30-XX-10-0



## 4286

4286-0-15-XX-30-XX-10-0

Hex press-fit in .055 plated through-hole



### SPECIFICATIONS:

**Shell Material:** Brass Alloy 360, 1/2 Hard

**Contact Material:** Beryllium Copper Alloy 172, HT

**Dimensions:** Inches

**Tolerances On:** Lengths: ±.005

Diameters: ±.002

Angles: ± 2°



**ORDER CODE:** XXXX - X - XX - XX - XX - XX - 10 - 0

**BASIC PART #**

**SPECIFY SHELL FINISH:**

- 01 200 μ" TIN/LEAD OVER NICKEL
- ◆ 80 200 μ" TIN OVER NICKEL (RoHS)
- ◆ 15 10 μ" GOLD OVER NICKEL (RoHS)

**SPECIFY CONTACT FINISH:**

- 02 100 μ" TIN/LEAD OVER NICKEL
- ◆ 84 100 μ" TIN OVER NICKEL (RoHS)
- ◆ 27 30 μ" GOLD OVER NICKEL (RoHS)

**SELECT CONTACT:**

**#30 or #32 CONTACT (DATA ON PAGE 253)**

(For alternate contact choices, see groups B and C on page 248)

