



Chipsmall Limited consists of a professional team with an average of over 10 year of expertise in the distribution of electronic components. Based in Hongkong, we have already established firm and mutual-benefit business relationships with customers from,Europe,America and south Asia,supplying obsolete and hard-to-find components to meet their specific needs.

With the principle of “Quality Parts,Customers Priority,Honest Operation,and Considerate Service”,our business mainly focus on the distribution of electronic components. Line cards we deal with include Microchip,ALPS,ROHM,Xilinx,Pulse,ON,Everlight and Freescale. Main products comprise IC,Modules,Potentiometer,IC Socket,Relay,Connector.Our parts cover such applications as commercial,industrial, and automotives areas.

We are looking forward to setting up business relationship with you and hope to provide you with the best service and solution. Let us make a better world for our industry!



Contact us

Tel: +86-755-8981 8866 Fax: +86-755-8427 6832

Email & Skype: info@chipsmall.com Web: www.chipsmall.com

Address: A1208, Overseas Decoration Building, #122 Zhenhua RD., Futian, Shenzhen, China



10 9 8 7 6 5 4 3 2 1

F

E

D

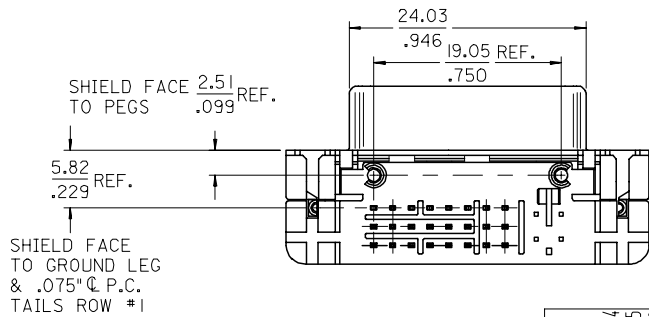
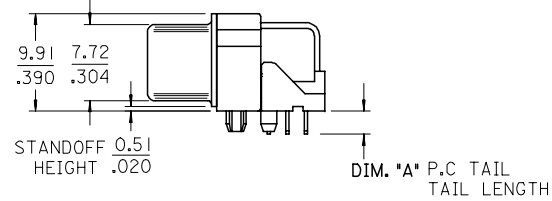
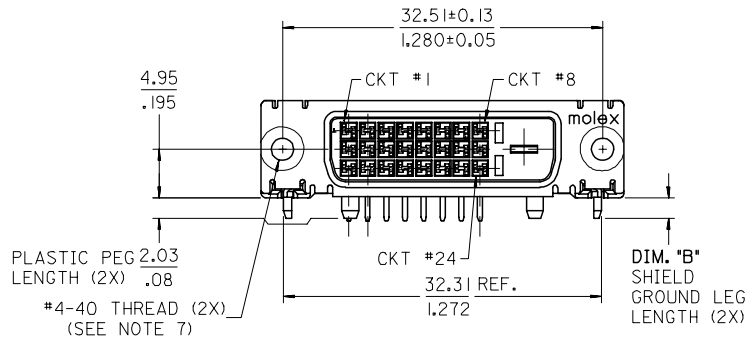
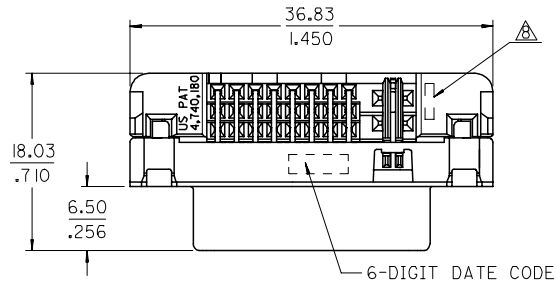
C

B

A

NOTES:

- MATERIALS:
SHIELD -- DEEP DRAW STEEL.
HOUSING -- GLASS FILLED POLYMER, NATURAL (IVORY WHITE), UL 94v-0.
TAIL ALIGNER -- GLASS FILLED POLYMER, NATURAL (IVORY WHITE), UL 94v-0.
CONTACTS -- COPPER ALLOY.
MICROCROSS GROUND -- COPPER ALLOY.
 - PLATING: SEE SHEET 2
 - PRODUCT CONFORMS TO MOLEX PRODUCT SPECIFICATION NUMBER PS-74320-001. REFER TO THIS SPECIFICATION FOR SPACING ON A P.C.B. OF TWO OR MORE CONNECTORS WHEN USING A CABLE OR AN ADAPTER ASSEMBLY.
 - SEE SHEET 2 FOR RECOMMENDED PANEL CUT-OUT AND P.C.B. LAYOUT.
 - PARTS WILL BE PACKAGED IN TRAYS PER PK-74320-010.
 - PRODUCT CONFORMS TO DDWG DVI SPECIFICATION. REFER TO THIS SPECIFICATION FOR CONNECTOR MATING DIMENSIONS.
 - RECOMMENDED MOUNTING HARDWARE IS MOLEX P/N : 88780-6066 OR 82007-0300. OR 71781-0001. REFER TO PRODUCT SPECIFICATION NUMBER PS-74320-001 FOR THE APPLICATION TORQUE REQUIREMENT FOR ASSEMBLING MOUNTING HARDWARE.
- △ CAVITY NO. AND MANUFACTURING PLANT CODE.



PART NUMBER	PLATING OPTION	DIM 'A'	DIM 'B'
6735I-4000	1	2.34/.092	2.03±0.51
6735I-4001	1	1.27/.050	.080±.020
6735I-4002	1	2.79/.110	2.79/.110
6735I-4003	1	3.12/.123	2.79/.110
6735I-4005	2	1.27/.050	.080±.020
6735I-4016	2	2.79/.110	2.79/.110
6735I-4007	2	3.12/.123	2.79/.110

REVISE	DESCRIPTION
EC NO: SH2007-0732	2007/06/04
DRWN: XJSONG	2007/06/05
CHKD: JTIAN	2007/06/05
APPR: JNCHEN	2007/06/22
G	REV

QUALITY SYMBOLS	▽=0
▽=0	

GENERAL TOLERANCES (UNLESS SPECIFIED)	MM	INCH
4 PLACES	± ---	± ---
3 PLACES	± ---	± .010
2 PLACES	± 0.25	± .010
1 PLACE	± 0.25	± .010
ANGULAR ± 3 °		
DRAFT WHERE APPLICABLE MUST REMAIN WITHIN DIMENSIONS		

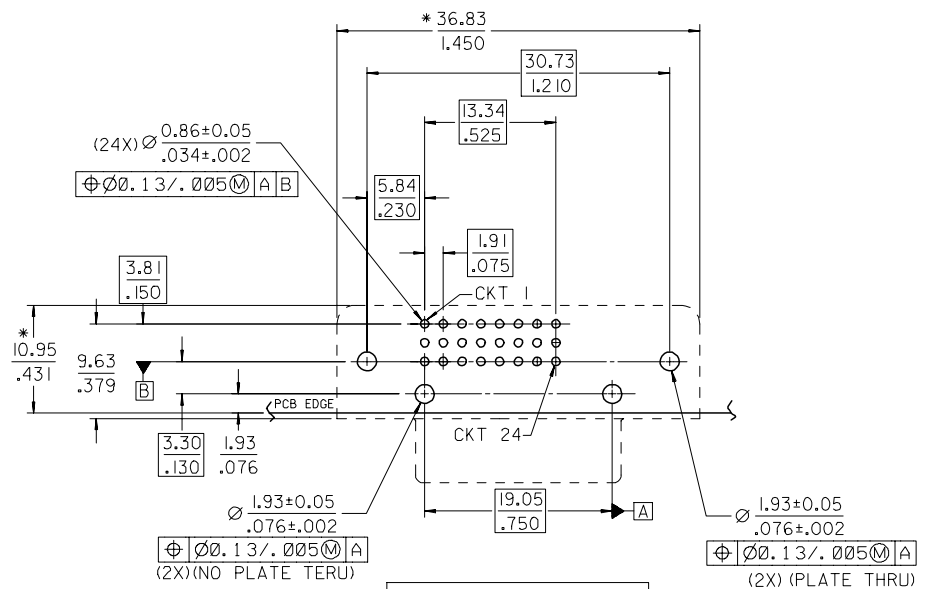
DIMENSION STYLE		SCALE	DESIGN UNITS	THIRD ANGLE PROJECTION
MM/IN		2:1	INCH	
DRAWN BY	DATE	TITLE		
GRACE	'00/09/05	DVI-DITITAL RIGHT ANGLE RECEPTACLE CONNECTOR		
CHECKED BY	DATE	MOLEX INCORPORATED		
SASHIN	'00/09/05	SD-67351-003		
APPROVED BY	DATE	SHEET NO.		
MLIN	'00/09/05	1 OF 2		
MATERIAL NO.		DOCUMENT NO.		
SEE CHART		SD-67351-003		
SIZE	THIS DRAWING CONTAINS INFORMATION THAT IS PROPRIETARY TO MOLEX INCORPORATED AND SHOULD NOT BE USED WITHOUT WRITTEN PERMISSION			
A3				

9 8 7 6 5 4 3 2 1

F

E

D



RECOMMENDED PCB LAYOUT

* THESE DIMENSIONS REPRESENT CONNECTOR OVERLAY ON PCB

PLATING OPTIONS:

PLATING OPTION #1:

OUTER SHIELD -- 150u*/3.75um MIN. BRIGHT TIN OVER
 50u*/(1.27um) MIN. NICKEL OVER COPPER FLASH.
 .075"/1.91mm CONTACTS -- 30u*/0.75um MIN. SELECT GOLD AND
 100u*/2.50um MIN. SELECT PURE TIN
 OVER 50u*/1.27um MIN. NICKEL OVERALL.

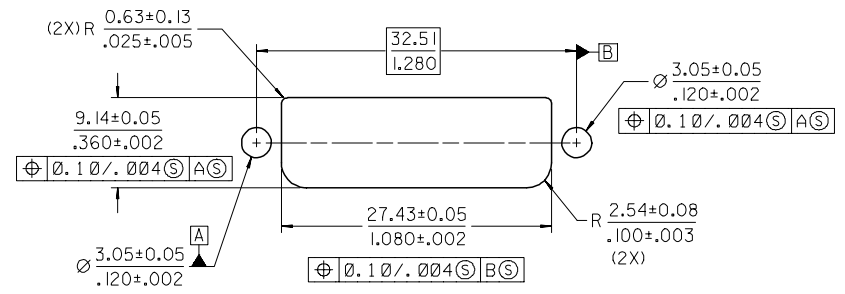
PLATING OPTION #2:

OUTER SHIELD -- 150u*/3.75um MIN. BRIGHT TIN OVER
 50u*/(1.27um) MIN. NICKEL OVER COPPER FLASH.
 .075"/1.91mm CONTACTS -- SELECT GOLD FLASH AND
 100u*/2.50um MIN. SELECT PURE TIN
 OVER 50u*/1.27um MIN. NICKEL OVERALL.

C

B

A



RECOMMEND PANEL CUT-OUT
 PANEL THICKNESS: 0.76/.030 - 1.02/.040

SEE SHEET 1
 EC NO: SH2007-0732
 DRWN: XJSONG 2007/06/04
 CHKD: JTIAN 2007/06/05
 APPR: INCHEM 2007/06/22

REV	DESCRIPTION
1	QUALITY SYMBOLS
2	▽=0
3	△=0

GENERAL TOLERANCES (UNLESS SPECIFIED)	
mm	INCH
4 PLACES ± ---	± ---
3 PLACES ± ---	± .010
2 PLACES ± 0.25	± .010
1 PLACE ± 0.25	± .010
ANGULAR ± 3 °	
DRAFT WHERE APPLICABLE MUST REMAIN WITHIN DIMENSIONS	

DIMENSION STYLE	
MM	IN
DRAWN BY	DATE
GRACE	'00/09/05
CHECKED BY	DATE
SASHIN	'00/09/05
APPROVED BY	DATE
MLIN	'00/09/05
MATERIAL NO.	
SEE CHART	
SIZE	A3
THIS DRAWING CONTAINS INFORMATION THAT IS PROPRIETARY TO MOLEX INCORPORATED AND SHOULD NOT BE USED WITHOUT WRITTEN PERMISSION	

SCALE	DESIGN UNITS	THIRD ANGLE PROJECTION
1:1	INCH	☉
TITLE		
DVI-DITITAL RIGHT ANGLE RECEPTACLE CONNECTOR		
MOLEX INCORPORATED		
DOCUMENT NO.	SHEET NO.	
SD-67351-003	2 OF 2	