



Chipsmall Limited consists of a professional team with an average of over 10 year of expertise in the distribution of electronic components. Based in Hongkong, we have already established firm and mutual-benefit business relationships with customers from,Europe,America and south Asia,supplying obsolete and hard-to-find components to meet their specific needs.

With the principle of “Quality Parts,Customers Priority,Honest Operation,and Considerate Service”,our business mainly focus on the distribution of electronic components. Line cards we deal with include Microchip,ALPS,ROHM,Xilinx,Pulse,ON,Everlight and Freescale. Main products comprise IC,Modules,Potentiometer,IC Socket,Relay,Connector.Our parts cover such applications as commercial,industrial, and automotives areas.

We are looking forward to setting up business relationship with you and hope to provide you with the best service and solution. Let us make a better world for our industry!



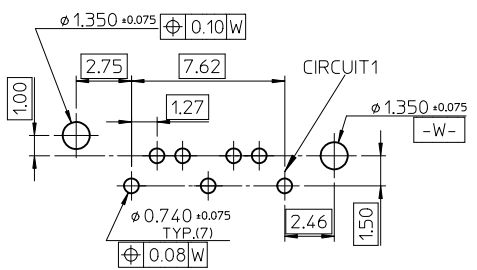
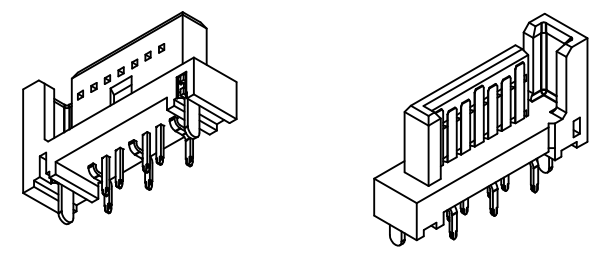
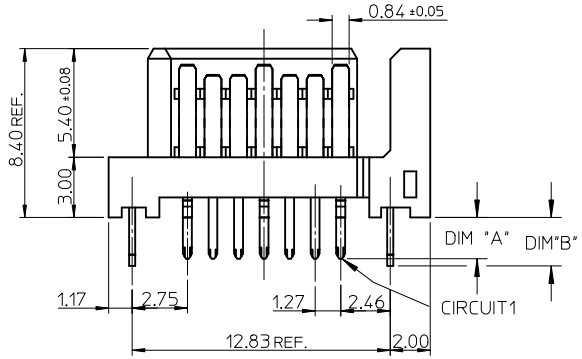
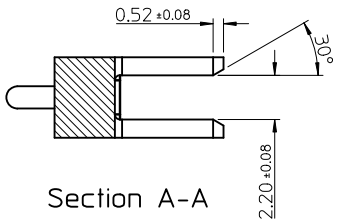
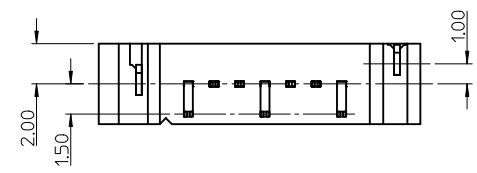
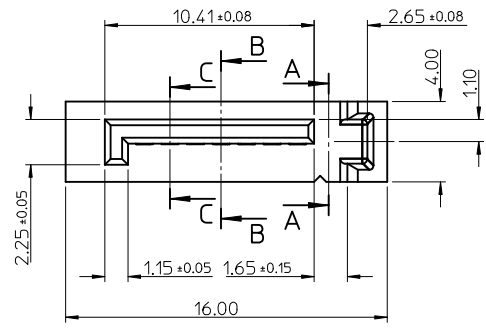
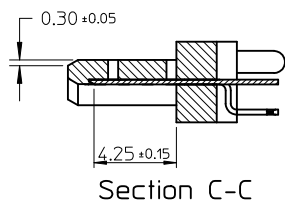
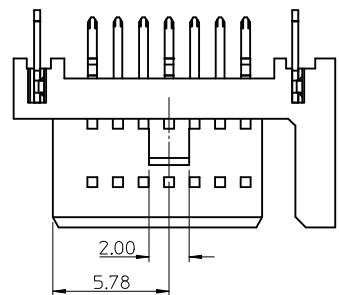
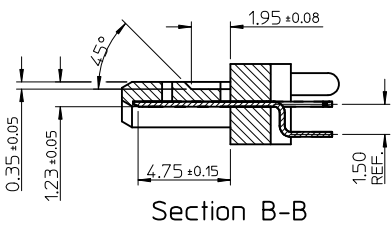
Contact us

Tel: +86-755-8981 8866 Fax: +86-755-8427 6832

Email & Skype: info@chipsmall.com Web: www.chipsmall.com

Address: A1208, Overseas Decoration Building, #122 Zhenhua RD., Futian, Shenzhen, China





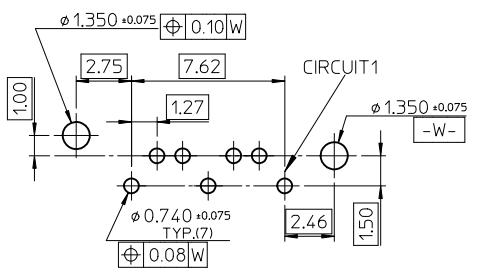
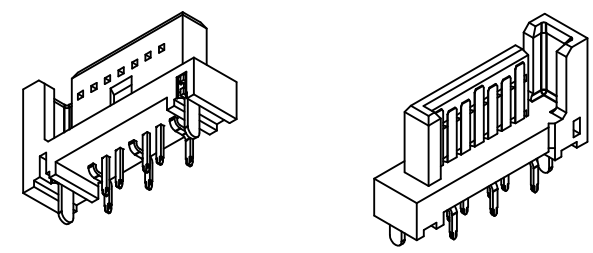
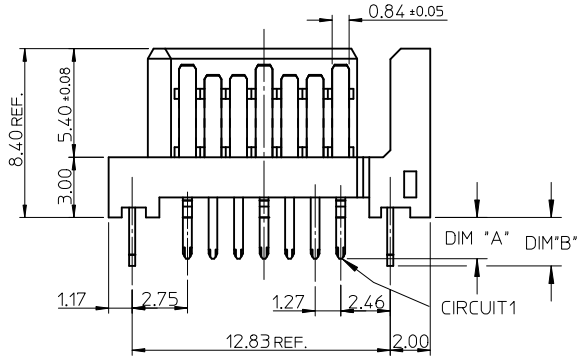
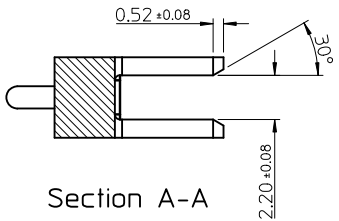
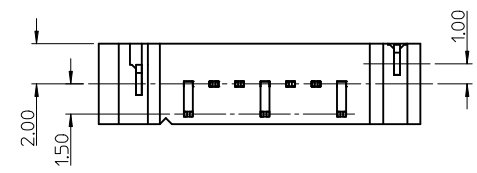
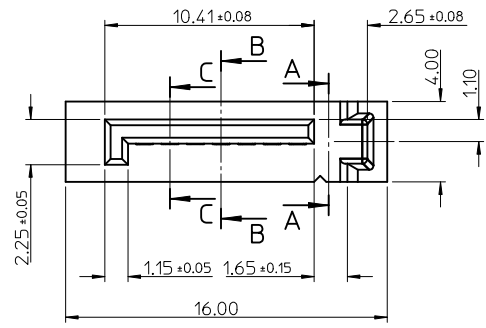
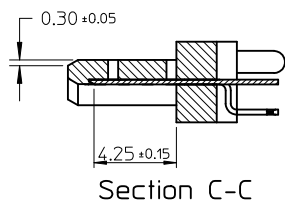
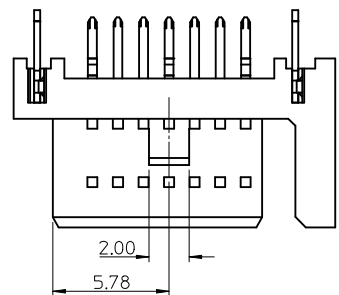
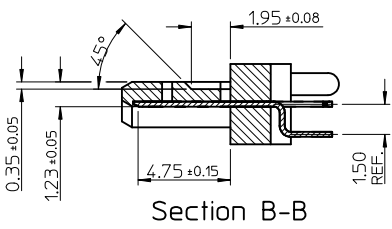
- NOTES:
- MATERIAL:
 - HOUSING: SEE TABLE, UL94V-0, COLOR: BLACK OR BLUE (SEE P/N TABLE)
 - TERMINAL/PEG: COPPER ALLOY
 - TERMINAL PLATING:
 - CONTACT AREA: GOLD PLATED
 - SOLDER TAIL: 1.27 MICRON MIN. TIN PLATED
 - UNDER PLATE: 1.27 MICRON MIN. NICKEL PLATED
 - PEG PLATING:
 - 1.27 MICRON MIN. TIN PLATED
 - OVERALL 1.27 MICRON MIN. NICKEL UNDER PLATED
 - PACKAGING SPECIFICATION REFER TO PK-67491-001
 - PRODUCT SPECIFICATION REFER TO PS-67491-001
 - MATING PART: 67489
 - RECOMMENDED PROCESS: WAVE SOLDERING
 - PRODUCT COMPLIANT TO RoHS DIRECTIVE 2002/95/EC AND ELV DIRECTIVE 2000/53/EC*

OBSELETE PARTS EC NO: SH2012-0231 DRWING: GLLI 2012/01/18 CHKD: XQZHANG 2012/01/18 APPR: AYIN 2012/01/20	QUALITY SYMBOLS $F_A = 0$ $F_C = 0$ $F_P = 0$	GENERAL TOLERANCES (UNLESS SPECIFIED) <table border="1"> <thead> <tr> <th></th> <th>mm</th> <th>INCH</th> </tr> </thead> <tbody> <tr> <td>4 PLACES</td> <td>± ---</td> <td>± ---</td> </tr> <tr> <td>3 PLACES</td> <td>± ---</td> <td>± ---</td> </tr> <tr> <td>2 PLACES</td> <td>± 0.15</td> <td>± ---</td> </tr> <tr> <td>1 PLACE</td> <td>± 0.25</td> <td>± ---</td> </tr> </tbody> </table> ANGULAR ± 3°		mm	INCH	4 PLACES	± ---	± ---	3 PLACES	± ---	± ---	2 PLACES	± 0.15	± ---	1 PLACE	± 0.25	± ---	DIMENSION STYLE MM ONLY	SCALE 4:1	DESIGN UNITS METRIC	THIRD ANGLE PROJECTION
		mm	INCH																		
	4 PLACES	± ---	± ---																		
	3 PLACES	± ---	± ---																		
2 PLACES	± 0.15	± ---																			
1 PLACE	± 0.25	± ---																			
		DRAWN BY: GLLI CHECKED BY: XQZHANG APPROVED BY:	DATE: 2012/01/18 DATE: 2012/01/18 DATE:	TITLE 1.27MM HIGH SPEED SERIAL PLUG VERTICAL TYPE																	
		MATERIAL NO. SEE CHART IN SHEET 2	DOCUMENT NO. SD-67491-002	MOLEX INCORPORATED																	
		DRAFT WHERE APPLICABLE MUST REMAIN WITHIN DIMENSIONS	SIZE A3	THIS DRAWING CONTAINS INFORMATION THAT IS PROPRIETARY TO MOLEX INCORPORATED AND SHOULD NOT BE USED WITHOUT WRITTEN PERMISSION																	

10	9	8	7	6	5	4	3	2	1
P/N	SUB-ASSEMBLY	CONTACT PLATING TYPE	DIM'A'	DIM'B'	PCB THICKNESS	COLOR	PLASTIC TYPE	SOLDER TAIL PLATING	
67491-1030	67599-0005	GOLD FLASH	2.05	2.40	1.60	BLACK	THERMAL PLASTIC	PURE TIN	
67491-1031	67599-0006	0.76 MICRON GOLD PLATED							
67491-1032	67599-0007	0.38 MICRON GOLD PLATED							
67491-1038	67599-0005	GOLD FLASH	3.00	3.20	2.40				
67491-1039	67599-0006	0.76 MICRON GOLD PLATED							
67491-1040	67599-0007	0.38 MICRON GOLD PLATED							
67491-2031	67599-0206	0.76 MICRON GOLD PLATED	2.05	2.40	1.60	PANTONE NO.293C ΔE<2			
67491-2032	67599-0207	0.38 MICRON GOLD PLATED							
67491-2035	67599-0205	GOLD FLASH	2.35	2.40	2.00				
67491-2036	67599-0206	0.76 MICRON GOLD PLATED							
67491-2037	67599-0207	0.38 MICRON GOLD PLATED							
67491-2038	67599-0205	GOLD FLASH	3.00	3.20	2.40				
67491-2039	67599-0206	0.76 MICRON GOLD PLATED							
67491-2040	67599-0207	0.38 MICRON GOLD PLATED							
67491-1139	67599-0106	0.76 MICRON GOLD PLATED	3.00	3.20	2.40	BLACK	HIGH TEMPERATURE THERMAL PLASTIC		



OBSOLETE PARTS EC NO: SH2012-0231 DRWNGLLI 2012/01/18 CHKD:XQZHANG 2012/01/18 APPR:AYIN 2012/01/20	DESCRIPTION REV	QUALITY SYMBOLS	GENERAL TOLERANCES (UNLESS SPECIFIED)	DIMENSION STYLE	SCALE	DESIGN UNITS	THIRD ANGLE PROJECTION															
		$\nabla_A = 0$ $\nabla_C = 0$ $\nabla_P = 0$	<table border="1"> <tr> <th></th> <th>mm</th> <th>INCH</th> </tr> <tr> <td>4 PLACES</td> <td>± ---</td> <td>± ---</td> </tr> <tr> <td>3 PLACES</td> <td>± ---</td> <td>± ---</td> </tr> <tr> <td>2 PLACES</td> <td>± 0.15</td> <td>± ---</td> </tr> <tr> <td>1 PLACE</td> <td>± 0.25</td> <td>± ---</td> </tr> </table>		mm	INCH	4 PLACES	± ---	± ---	3 PLACES	± ---	± ---	2 PLACES	± 0.15	± ---	1 PLACE	± 0.25	± ---	MM ONLY	4:1	METRIC	
			mm	INCH																		
		4 PLACES	± ---	± ---																		
3 PLACES	± ---	± ---																				
2 PLACES	± 0.15	± ---																				
1 PLACE	± 0.25	± ---																				
	<table border="1"> <tr> <th>DRAWN BY</th> <th>DATE</th> <th>TITLE</th> </tr> <tr> <td>GLL I</td> <td>2012/01/18</td> <td rowspan="3">1.27MM HIGH SPEED SERIAL PLUG VERTICAL TYPE</td> </tr> <tr> <th>CHECKED BY</th> <th>DATE</th> </tr> <tr> <td>XQZHANG</td> <td>2012/01/18</td> </tr> </table>	DRAWN BY	DATE	TITLE	GLL I	2012/01/18	1.27MM HIGH SPEED SERIAL PLUG VERTICAL TYPE	CHECKED BY	DATE	XQZHANG	2012/01/18	<table border="1"> <tr> <th>MATERIAL NO.</th> <th>DOCUMENT NO.</th> <th>SHEET NO.</th> </tr> <tr> <td>SEE CHART</td> <td>SD-67491-002</td> <td>2 OF 2</td> </tr> </table>	MATERIAL NO.	DOCUMENT NO.	SHEET NO.	SEE CHART	SD-67491-002	2 OF 2				
DRAWN BY	DATE	TITLE																				
GLL I	2012/01/18	1.27MM HIGH SPEED SERIAL PLUG VERTICAL TYPE																				
CHECKED BY	DATE																					
XQZHANG	2012/01/18																					
MATERIAL NO.	DOCUMENT NO.	SHEET NO.																				
SEE CHART	SD-67491-002	2 OF 2																				
	DRAFT WHERE APPLICABLE MUST REMAIN WITHIN DIMENSIONS	THIS DRAWING CONTAINS INFORMATION THAT IS PROPRIETARY TO MOLEX INCORPORATED AND SHOULD NOT BE USED WITHOUT WRITTEN PERMISSION																				



RECOMMENDED P.C.B. LAYOUT t=1.6mm OR 2.0mm

- NOTES:
- MATERIAL:
 - HOUSING: SEE TABLE, UL94V-0, COLOR: BLACK OR BLUE (SEE P/N TABLE)
 - TERMINAL/PEG: COPPER ALLOY
 - TERMINAL PLATING :
 - CONTACT AREA: GOLD PLATED
 - SOLDER TAIL: 1.27 MICRON MIN. TIN PLATED
 - UNDER PLATE: 1.27 MICRON MIN. NICKEL PLATED
 - PEG PLATING:
 - 1.27 MICRON MIN. TIN PLATED
 - OVERALL 1.27 MICRON MIN. NICKEL UNDER PLATED
 - PACKAGING SPECIFICATION REFER TO PK-67491-001
 - PRODUCT SPECIFICATION REFER TO PS-67491-001
 - MATING PART: 67489
 - RECOMMENDED PROCESS: WAVE SOLDERING
 - PRODUCT COMPLIANT TO RoHS DIRECTIVE 2002/95/EC AND ELV DIRECTIVE 2000/53/EC

OBSELETE PARTS EC NO: SH2011-0104 DRWING: GLL CHKD: RZHANG APPR: RZHANG 2010/10/22 2010/11/03	QUALITY SYMBOLS $F_A=0$ $F_G=0$ $F_P=0$	GENERAL TOLERANCES (UNLESS SPECIFIED) mm INCH 4 PLACES ± --- ± --- 3 PLACES ± --- ± --- 2 PLACES ± 0.15 ± --- 1 PLACE ± 0.25 ± --- ANGULAR ± 3 °	DIMENSION STYLE MM ONLY	SCALE 4:1	DESIGN UNITS METRIC	THIRD ANGLE PROJECTION
	DRAWN BY: RICHARD CHECKED BY: VINCENT APPROVED BY: RZHANG DATE: 2010/06/21 DATE: 2010/06/21 DATE: 2010/11/03	TITLE 1.27MM HIGH SPEED SERIAL PLUG SERIAL TYPE	MATERIAL NO. SEE CHART IN SHEET 2	DOCUMENT NO. SD-67491-002	SHEET NO. 1 OF 2	
	DRAFT WHERE APPLICABLE MUST REMAIN WITHIN DIMENSIONS	THIS DRAWING CONTAINS INFORMATION THAT IS PROPRIETARY TO MOLEX INCORPORATED AND SHOULD NOT BE USED WITHOUT WRITTEN PERMISSION				
	MOLEX MOLEX INCORPORATED					

	10	9	8	7	6	5	4	3	2	1		
	P/N	CONTACT PLATING TYPE	"A"	"B"	PCB THICKNESS	SOLDERING PLATE	COLOR	PLASTIC TYPE				
F	67491-1030	GOLD FLASH	2.05	2.40	1.60	PURE TIN	BLACK	THERMAL PLASTIC				
	67491-1031	0.76 MICRON GOLD PLATED										
	67491-1032	0.38 MICRON GOLD PLATED										
	67491-1035	GOLD FLASH										
	67491-1036	0.76 MICRON GOLD PLATED										
	67491-1037	0.38 MICRON GOLD PLATED										
E	67491-1038	GOLD FLASH	2.35	2.40	2.00		PURE TIN		BLACK	THERMAL PLASTIC		
	67491-1039	0.76 MICRON GOLD PLATED										
	67491-1040	0.38 MICRON GOLD PLATED										
	67491-2031	0.76 MICRON GOLD PLATED										
	67491-2032	0.38 MICRON GOLD PLATED										
	67491-2035	GOLD FLASH										
D	67491-2036	0.76 MICRON GOLD PLATED	2.35	2.40	2.00	PURE TIN	BLUE PENTONE NO.293C ΔE<3	THERMAL PLASTIC				
	67491-2037	0.38 MICRON GOLD PLATED										
	67491-2038	GOLD FLASH										
	67491-2039	0.76 MICRON GOLD PLATED										
	67491-2040	0.38 MICRON GOLD PLATED										
	67491-1130	GOLD FLASH										
C	67491-1131	0.76 MICRON GOLD PLATED	2.05	2.40	1.60		PURE TIN		BLACK	HIGH TEMPERATURE THERMAL PLASTIC		
	67491-1132	0.38 MICRON GOLD PLATED										
	67491-1135	GOLD FLASH										
	67491-1136	0.76 MICRON GOLD PLATED										
	67491-1137	0.38 MICRON GOLD PLATED										
	67491-1138	GOLD FLASH										
	67491-1139	0.76 MICRON GOLD PLATED	3.00	3.20	2.40	PURE TIN		BLACK	HIGH TEMPERATURE THERMAL PLASTIC			
	67491-1140	0.38 MICRON GOLD PLATED										

B									
---	--	--	--	--	--	--	--	--	--

A	OBsolete PARTS EC NO: SH2011-0104 G DRWG:LLI 2010/10/22 CHKD: APPR:RZHANG 2010/11/03 REV	QUALITY SYMBOLS	GENERAL TOLERANCES (UNLESS SPECIFIED)	DIMENSION STYLE	SCALE	DESIGN UNITS	THIRD ANGLE PROJECTION	TITLE 1.27MM HIGH SPEED SERIAL PLUG VERTICAL TYPE		
		$F_A=0$ $F_G=0$ $F_P=0$	mm INCH 4 PLACES ± --- ± --- 3 PLACES ± --- ± --- 2 PLACES ± 0.15 ± --- 1 PLACE ± 0.25 ± --- ANGULAR ± 3 °	MM ONLY DRAWN BY: RICHARD DATE: '01/06/21 CHECKED BY: VINCENT DATE: '01/06/21 APPROVED BY: RZHANG DATE: 2010/11/03 MATERIAL NO. DOCUMENT NO.	4:1 METRIC					
		DRAFT WHERE APPLICABLE MUST REMAIN WITHIN DIMENSIONS		SEE CHART	MOLEX INCORPORATED			SHEET NO. 2 OF 2		
				SIZE A3	THIS DRAWING CONTAINS INFORMATION THAT IS PROPRIETARY TO MOLEX INCORPORATED AND SHOULD NOT BE USED WITHOUT WRITTEN PERMISSION					