



Chipsmall Limited consists of a professional team with an average of over 10 year of expertise in the distribution of electronic components. Based in Hongkong, we have already established firm and mutual-benefit business relationships with customers from,Europe,America and south Asia,supplying obsolete and hard-to-find components to meet their specific needs.

With the principle of "Quality Parts,Customers Priority,Honest Operation,and Considerate Service",our business mainly focus on the distribution of electronic components. Line cards we deal with include Microchip,ALPS,ROHM,Xilinx,Pulse,ON,Everlight and Freescale. Main products comprise IC,Modules,Potentiometer,IC Socket,Relay,Connector.Our parts cover such applications as commercial,industrial, and automotives areas.

We are looking forward to setting up business relationship with you and hope to provide you with the best service and solution. Let us make a better world for our industry!



## Contact us

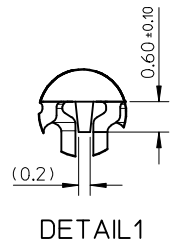
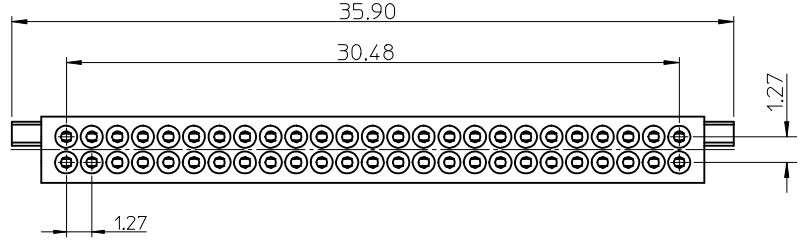
Tel: +86-755-8981 8866 Fax: +86-755-8427 6832

Email & Skype: info@chipsmall.com Web: www.chipsmall.com

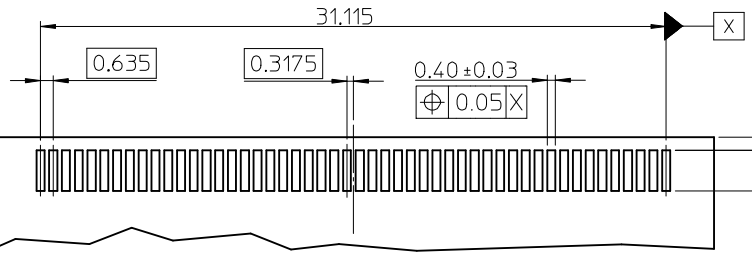
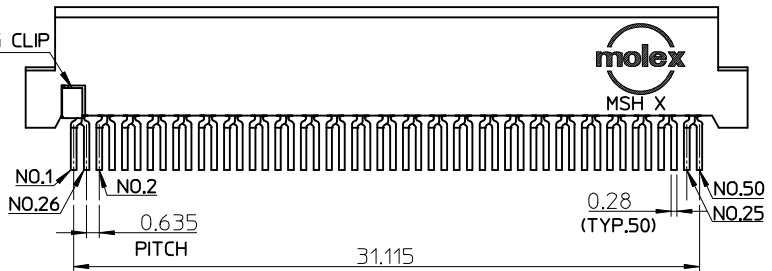
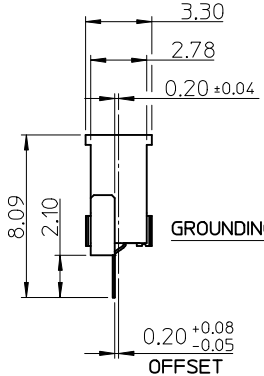
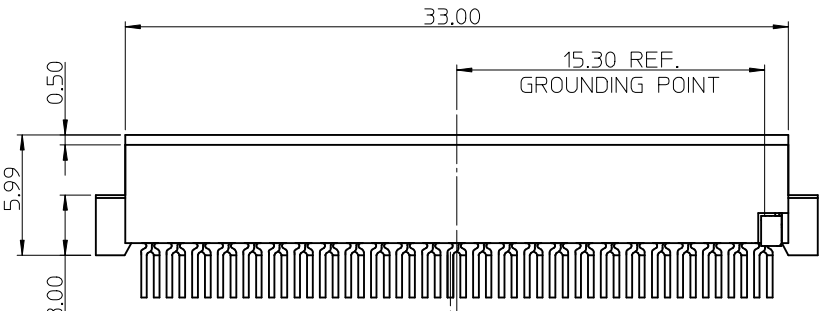
Address: A1208, Overseas Decoration Building, #122 Zhenhua RD., Futian, Shenzhen, China



10 9 8 7 6 5 4 3 2 1

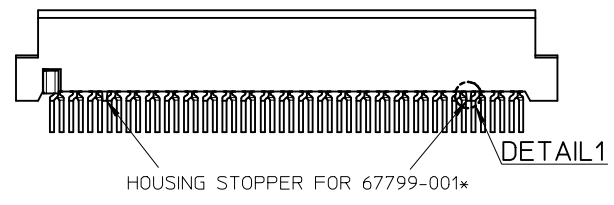


NOTE:  
 1.MATERIAL:  
 HOUSING, HIGH TEMPERATURE POLYMER.  
 TERMINAL, COPPER ALLOY.  
 GROUNDING CLIP, COPPER ALLOY.  
 2.FINISH: TERMINAL:  
 NICKEL OVERALL THICKNESS 0.5 MICRON MINIMUM,  
 CONTACT AREA(SEE TABLE):  
 a. SELECTIVE GOLD 0.1 MICRON MINIMUM OVER PALLADIUM/NICKEL 0.5 MICRON MINIMUM,  
 b. SELECTIVE GOLD 0.75 MICRON MINIMUM OVER NICKEL 0.5 MICRON MINIMUM (FOR P/N:67799-0008),  
 SOLDER AREA:(SEE TABLE)  
 a.MATTE TIN /TIN-LEAD 5.0 MICRON MINIMUM  
 b.GOLD FLASH 0.05 MICRON MINIMUM,  
 GROUNDING CLIP:  
 GOLD FLASH OVERALL OVER NICKEL 1.25 MICRON MINIMUM.  
 3.TERMINAL COPLANARITY 0.08mm MAXIMUM.  
 4.PRODUCT SPECIFICATION: PS-67799-001.  
 5.PACKAGE: PK-67799-001.  
 6.GROUNDING CLIP CONDUCTS WITH TERMINAL NO.1, NO.26.



PLATING TYPE IN SOLDER TAIL	MATTE TIN PLATING		GOLD FLASH PLATING		CONTACT AREA: 30U" GOLD SOLDER TAIL: GOLD FLASH	
HOUSING STOPPER	WITHOUT	WITH	WITHOUT	WITH	WITHOUT	WITH
MATERIAL NO.	67799-0004	67799-0014	67799-0007	67799-0017	67799-0008	67799-0018

PCB LAYOUT RECOMMEND



REVISED CARRIER TAPE	QUALITY SYMBOLS
EC NO: S2014-0266	▽ F <sub>1</sub> = 0
2013/09/12	▽ F <sub>2</sub> = 0
DRWN: JZENG	▽ F <sub>3</sub> = 0
CHKD: JIAN02	
2013/10/22	
APPR: KHLIM	
2013/10/28	
REV	
L1	

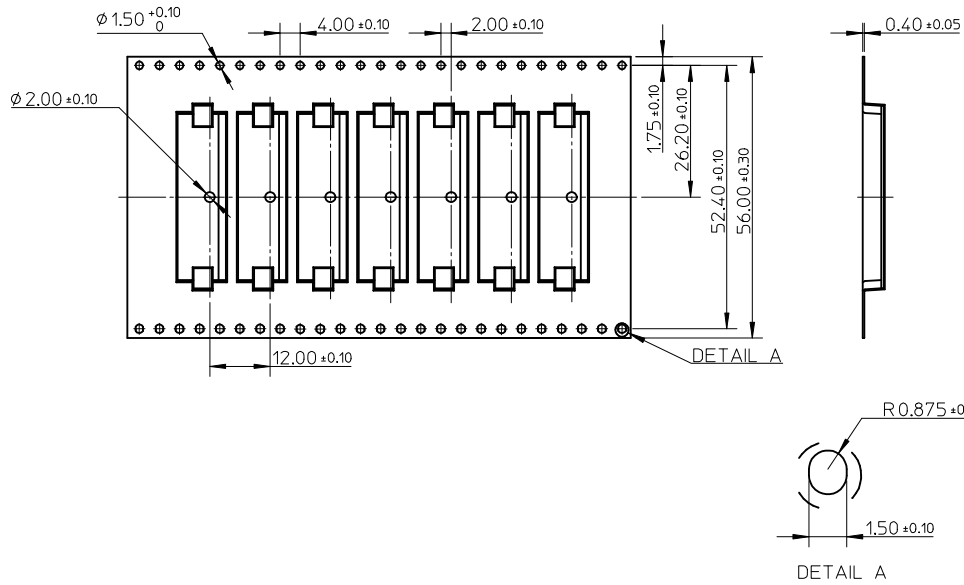
GENERAL TOLERANCES (UNLESS SPECIFIED)	DIMENSION STYLE	SCALE	DESIGN UNITS	THIRD ANGLE PROJECTION
	MM ONLY	1:1	METRIC	
4 PLACES ± --- ± ---	DRAWN BY	DATE	TITLE	
3 PLACES ± --- ± ---	BRAD	2003/02/20	50 CKT CF RECEPTACLE	
2 PLACES ± 0.25 ± ---	CHECKED BY	DATE	SMT TYPE B, OFFSET 0.20MM	
1 PLACE ± 0.25 ± ---	WILSON	2003/02/20		
0 PLACE ± ±	APPROVED BY	DATE		
	AYIN	2012/10/26		
ANGULAR ± 3 °	MATERIAL NO.	DOCUMENT NO.		
DRAFT WHERE APPLICABLE MUST REMAIN WITHIN DIMENSIONS	SEE TABLE	SD-67799-004		
	SIZE A3	THIS DRAWING CONTAINS INFORMATION THAT IS PROPRIETARY TO MOLEX INCORPORATED AND SHOULD NOT BE USED WITHOUT WRITTEN PERMISSION		SHEET NO. 1 OF 2

**moLEX**

SD-67799-004

1 OF 2

9 8 7 6 5 4 3 2 1



NOTES:

1. MATERIAL: POIYSTYRENE, THICKNESS: 0.40±0.05mm.
2. COMPONENT LOAD PER 13" REEL: 1,000 PCS.

SEE SHEET 1 EC NO: SZ014-0266 DRWN: JZENG CHKD: JTAN02 APPR: KHLIM	2013/09/12 2013/10/22 2013/10/28	DESCRIPTION L1	QUALITY SYMBOLS	GENERAL TOLERANCES (UNLESS SPECIFIED)		DIMENSION STYLE MM ONLY		SCALE 1:1	DESIGN UNITS METRIC	THIRD ANGLE PROJECTION		
			$\nabla_A = 0$ $\nabla_G = 0$ $\nabla_P = 0$	mm	INCH	DRAWN BY BRAD	DATE 2003/02/20	TITLE 50 CKT CF RECEPTACLE SMT TYPE B, OFFSET 0.20MM				
			4 PLACES ± --- ± --- 3 PLACES ± --- ± --- 2 PLACES ± 0.25 ± --- 1 PLACE ± 0.25 ± --- 0 PLACE ± ±	ANGULAR ± 3 °		CHECKED BY WILSON	DATE 2003/02/20	<div style="text-align: center; font-size: 24pt; font-weight: bold;">molex</div> DOCUMENT NO. SD-67799-004 SHEET NO. 2 OF 2				
			DRAFT WHERE APPLICABLE MUST REMAIN WITHIN DIMENSIONS		APPROVED BY AYIN	DATE 2012/10/26	MATERIAL NO. SEE SHEET 1 THIS DRAWING CONTAINS INFORMATION THAT IS PROPRIETARY TO MOLEX INCORPORATED AND SHOULD NOT BE USED WITHOUT WRITTEN PERMISSION					