



Chipsmall Limited consists of a professional team with an average of over 10 year of expertise in the distribution of electronic components. Based in Hongkong, we have already established firm and mutual-benefit business relationships with customers from,Europe,America and south Asia,supplying obsolete and hard-to-find components to meet their specific needs.

With the principle of “Quality Parts,Customers Priority,Honest Operation,and Considerate Service”,our business mainly focus on the distribution of electronic components. Line cards we deal with include Microchip,ALPS,ROHM,Xilinx,Pulse,ON,Everlight and Freescale. Main products comprise IC,Modules,Potentiometer,IC Socket,Relay,Connector.Our parts cover such applications as commercial,industrial, and automotives areas.

We are looking forward to setting up business relationship with you and hope to provide you with the best service and solution. Let us make a better world for our industry!



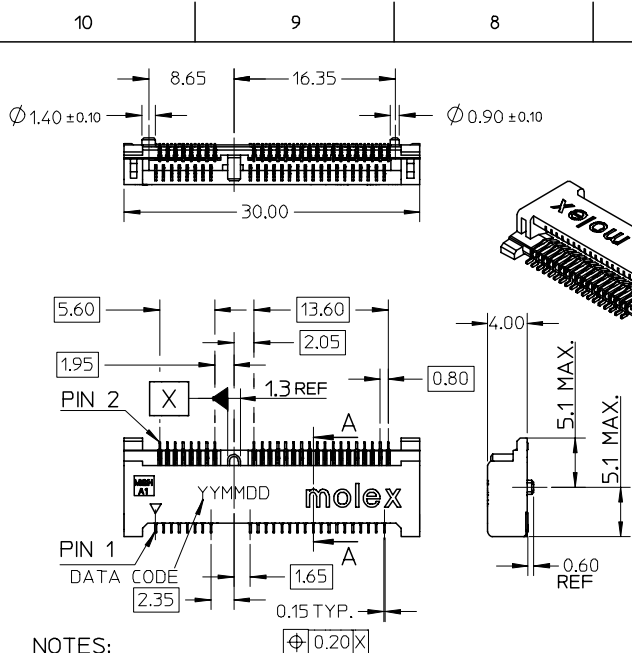
Contact us

Tel: +86-755-8981 8866 Fax: +86-755-8427 6832

Email & Skype: info@chipsmall.com Web: www.chipsmall.com

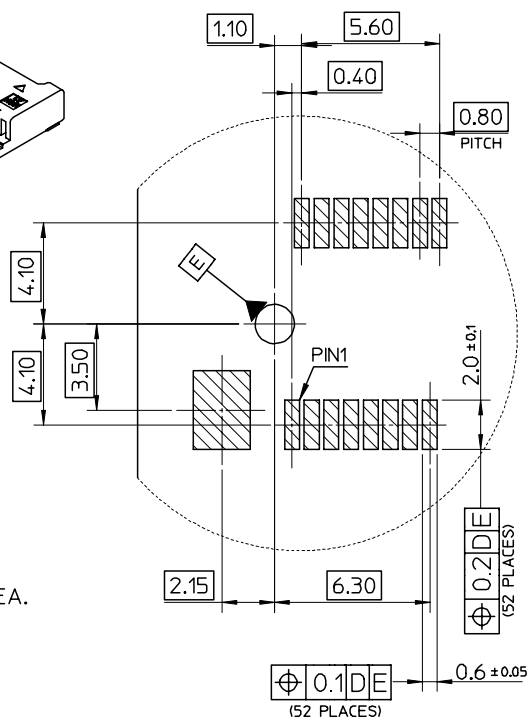
Address: A1208, Overseas Decoration Building, #122 Zhenhua RD., Futian, Shenzhen, China





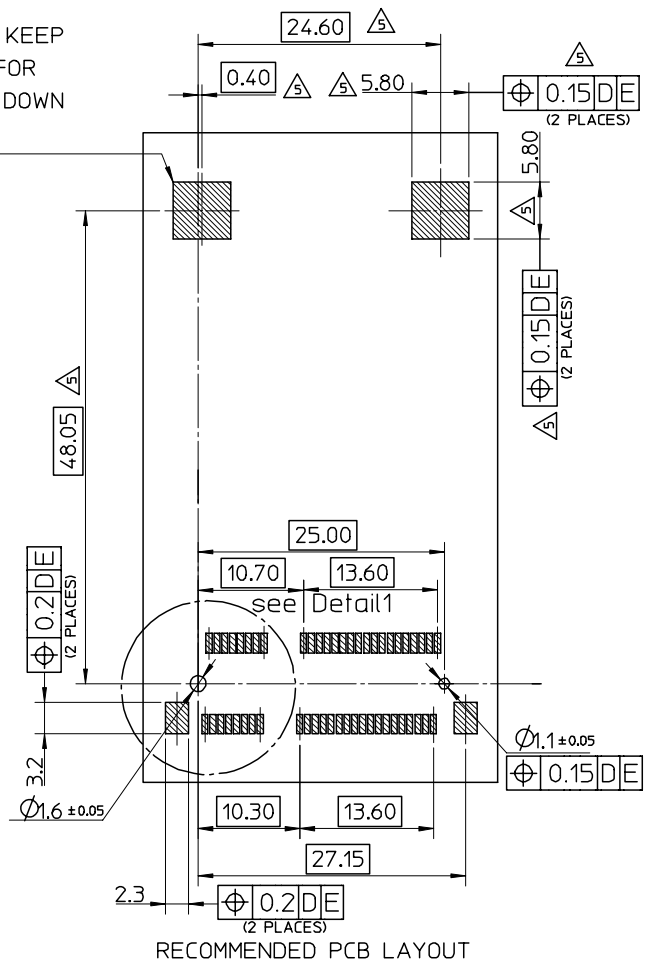
NOTES:

- MATERIALS:
HOUSING:LCP,COLOR:BLACK, UL94V-0.
CONTACT: PHOSPHOR BRONZE NAIL:BRASS
- FINISH
CONTACT:SELECTIVE GOLD IN CONTACT AND SOLDER AREA.
UNDERPLATED:NICKEL OVERALL
NAIL:TIN IN SOLDER AREA.
UNDERPLATED:NICKEL OVERALL.
- THE MODULE CARD REFERENCE MINI PCI EXPRESS CARD
ELECTROMECHANICAL SPECIFICATION.
- DATUM D IS THE TOP SURFACE OF PCB.
- IF THE CONNECTOR USED WITH 48099-00**,LATCH SIDE
RECOMMENDED PCB LAYOUT REFERS TO SD-48099-0**.
- PART 67910**** COMPLIANT TO ROHS DIRECTIVE 2002/95/EC
AND ELV DIRECTIVE 2000/53/EC.



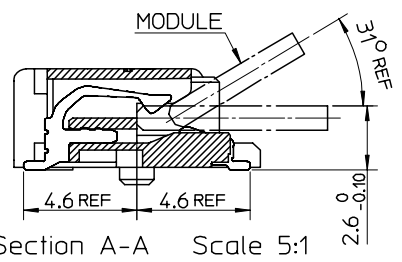
Detail1
Scale 5:1

COMPONENT KEEP
OUT AREA FOR
CARD HOLD DOWN
SOLUTION



RECOMMENDED PCB LAYOUT

679100002	10 MICROINCH GOLD
679101002	GOLD FLASH



Section A-A Scale 5:1

RELEASED EC NO: SH2007-0020 2006/08/02 DRWN:DHU CHKD:HARVEY APPR: INCHEM 2006/08/02 2006/08/09	DESCRIPTION	QUALITY SYMBOLS	GENERAL TOLERANCES (UNLESS SPECIFIED)	DIMENSION STYLE	SCALE	DESIGN UNITS	THIRD ANGLE PROJECTION													
		$\nabla=0$ $\sphericalangle=0$	<table border="1"> <thead> <tr> <th></th> <th>mm</th> <th>INCH</th> </tr> </thead> <tbody> <tr> <td>4 PLACES</td> <td>± ---</td> <td>± ---</td> </tr> <tr> <td>3 PLACES</td> <td>± ---</td> <td>± ---</td> </tr> <tr> <td>2 PLACES</td> <td>± 0.25</td> <td>± ---</td> </tr> <tr> <td>1 PLACE</td> <td>± 0.25</td> <td>± ---</td> </tr> </tbody> </table>		mm	INCH	4 PLACES	± ---	± ---	3 PLACES	± ---	± ---	2 PLACES	± 0.25	± ---	1 PLACE	± 0.25	± ---	MM ONLY	2:1
	mm	INCH																		
4 PLACES	± ---	± ---																		
3 PLACES	± ---	± ---																		
2 PLACES	± 0.25	± ---																		
1 PLACE	± 0.25	± ---																		
				DRAWN BY J. CHIANG 2003/02/25	TITLE MINI PCI EXPRESS CONN. 0.8 MM PITCH 52CIRCUIT 4.0MM H															
				CHECKED BY C. WILSON 2003/03/06	MOLEX INCORPORATED															
				APPROVED BY L. ERICK 2003/03/06	DOCUMENT NO. SD-67910-001															
				MATERIAL NO.	SHEET NO. 1 OF 2															
			DRAFT WHERE APPLICABLE MUST REMAIN WITHIN DIMENSIONS	SEE TABLE																
				THIS DRAWING CONTAINS INFORMATION THAT IS PROPRIETARY TO MOLEX INCORPORATED AND SHOULD NOT BE USED WITHOUT WRITTEN PERMISSION																

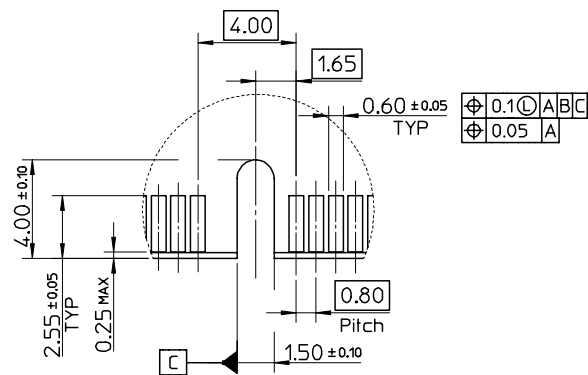
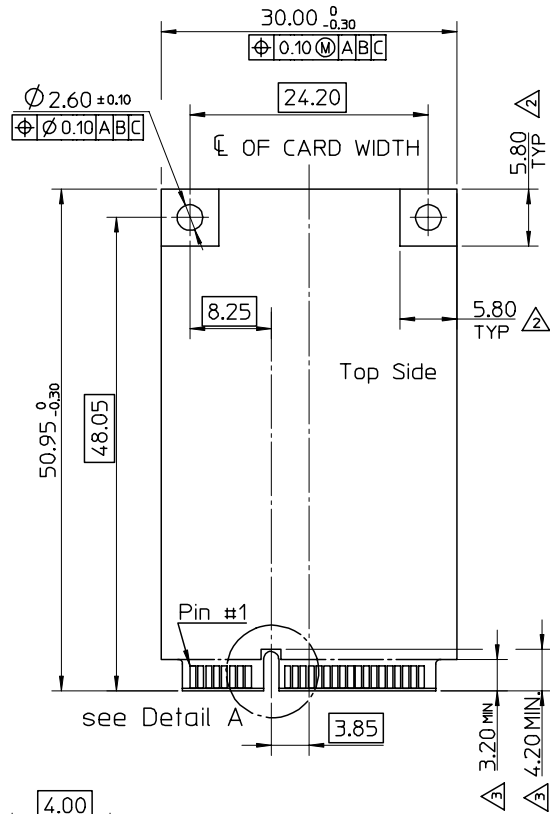
10 9 8 7 6 5 4 3 2 1

NOTES;

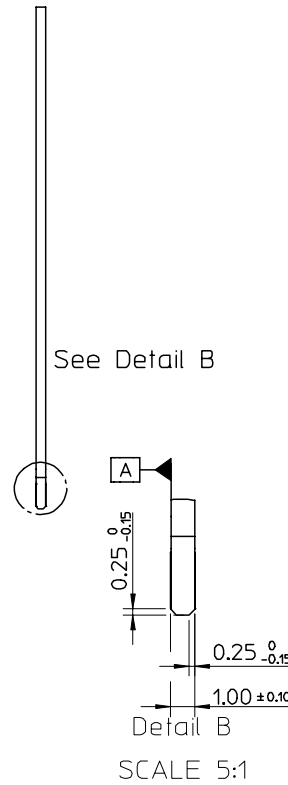
1. PIN NUMBERING REFERENCE:

ODD PINS - TOP SIDE
EVEN PINS - BOTTOM SIDE

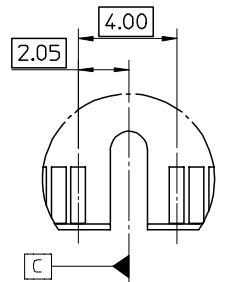
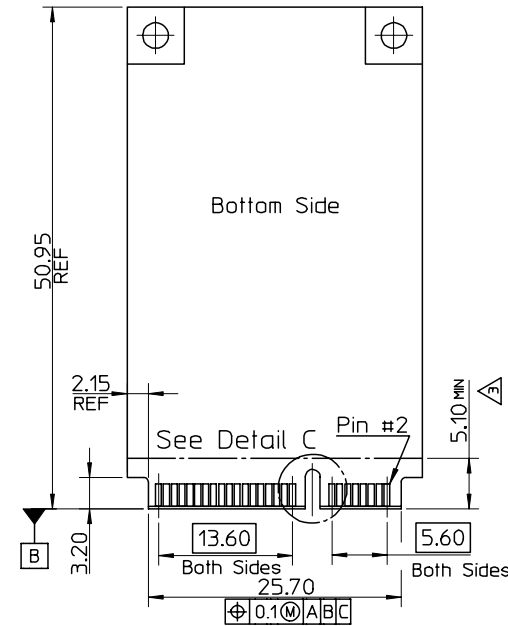
- △ COMPONENT AND ROUTING (ALL LAYERS)
KEEP OUT AREA FOR HOLD DOWN SOLUTIONS.
- △ COMPONENT KEEP OUT AREA FOR CONNECTOR.



Detail A
Scale 5:1



Detail B
SCALE 5:1



Detail C
SCALE 5:1

RELEASED EC NO: SH2007-0020 2006/08/02 DRWN:DHU CHKD:HARVEY APPR: JNCHEM 2006/08/09	QUALITY SYMBOLS ▽=0 △=0	GENERAL TOLERANCES (UNLESS SPECIFIED)		DIMENSION STYLE MM ONLY	SCALE 1:1	DESIGN UNITS METRIC	THIRD ANGLE PROJECTION
		4 PLACES ± --- ± ---	3 PLACES ± --- ± ---	2 PLACES ± 0.25 ± ---	1 PLACE ± 0.25 ± ---	ANGULAR ± 3 °	DRAWN BY J. CHIANG 2003/02/25
REV C	DESCRIPTION	DRAFT WHERE APPLICABLE MUST REMAIN WITHIN DIMENSIONS		SEE TABLE	MOLEX INCORPORATED		SHEET NO. 2 OF 2
		MATERIAL NO.		DOCUMENT NO. SD-67910-001	MATERIAL NO.		

9 8 7 6 5 4 3 2 1