



Chipsmall Limited consists of a professional team with an average of over 10 year of expertise in the distribution of electronic components. Based in Hongkong, we have already established firm and mutual-benefit business relationships with customers from,Europe,America and south Asia,supplying obsolete and hard-to-find components to meet their specific needs.

With the principle of “Quality Parts,Customers Priority,Honest Operation,and Considerate Service”,our business mainly focus on the distribution of electronic components. Line cards we deal with include Microchip,ALPS,ROHM,Xilinx,Pulse,ON,Everlight and Freescale. Main products comprise IC,Modules,Potentiometer,IC Socket,Relay,Connector.Our parts cover such applications as commercial,industrial, and automotives areas.

We are looking forward to setting up business relationship with you and hope to provide you with the best service and solution. Let us make a better world for our industry!



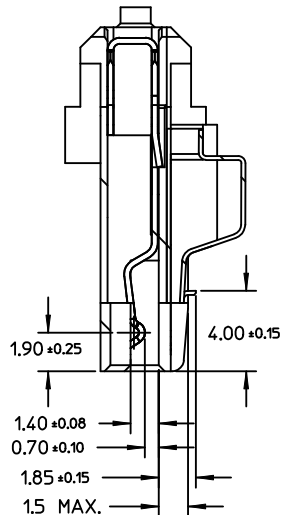
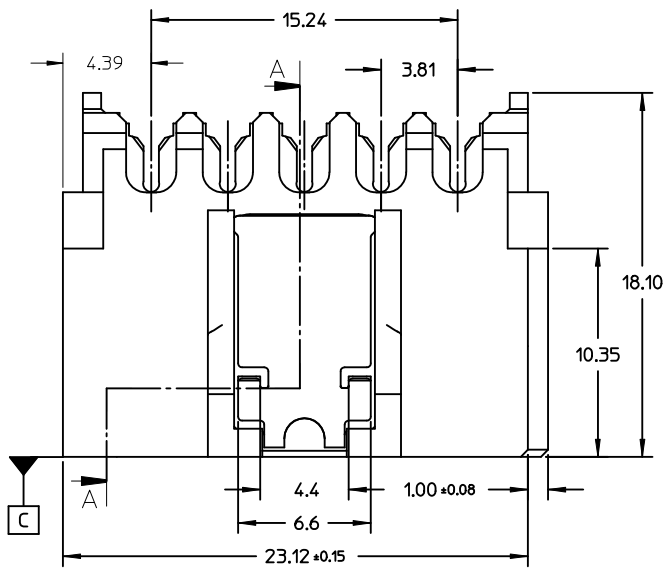
Contact us

Tel: +86-755-8981 8866 Fax: +86-755-8427 6832

Email & Skype: info@chipsmall.com Web: www.chipsmall.com

Address: A1208, Overseas Decoration Building, #122 Zhenhua RD., Futian, Shenzhen, China

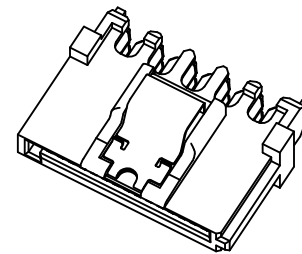




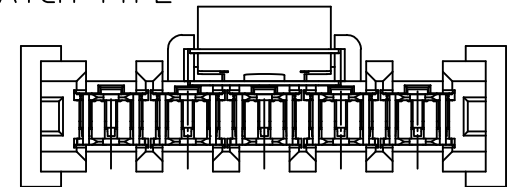
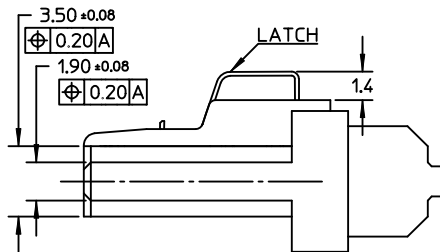
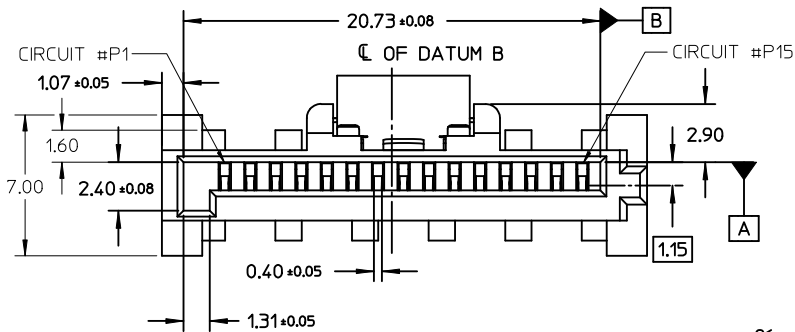
SECTION A-A

NOTES:

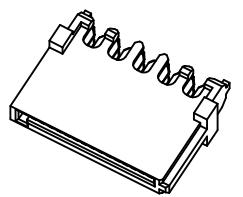
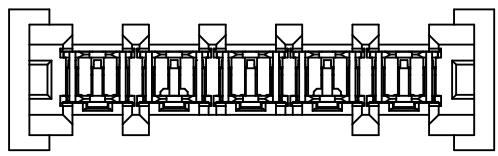
1. MATERIAL:
 - HOUSING: THERMAL PLASTIC, G.F., UL94V-0, COLOR: BLACK
 - COVER: THERMAL PLASTIC, COLOR: BLACK
 - TERMINAL: COPPER ALLOY
 - METAL LATCH: STAINLESS STEEL
2. TERMINAL PLATING:
 - CONTACT AREA: GOLD PLATED
 - IDT TAIL: PLATE TIN, 1.9 MICRONS MINIMUM
 - UNDER PLATE: PLATE NICKEL 1.25 MICRONS MINIMUM
3. PACKAGING: TRAY
4. PRODUCT SPECIFICATION REFER TO PS-67490-001
5. ASSEMBLE WITH COVER 679260040/0041 AFTER WIRE TERMINATION
6. MATING PART 87679
7. RECOMMENDED TERMINATING WIRE SIZE: SEE TABLE
8. PRODUCT COMPLIANT TO RoHS DIRECTIVE 2002/95/EC AND ELV DIRECTIVE 2000/53/EC



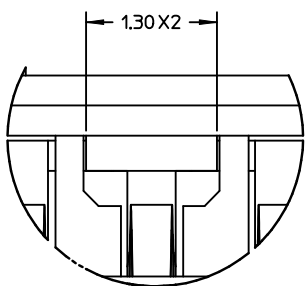
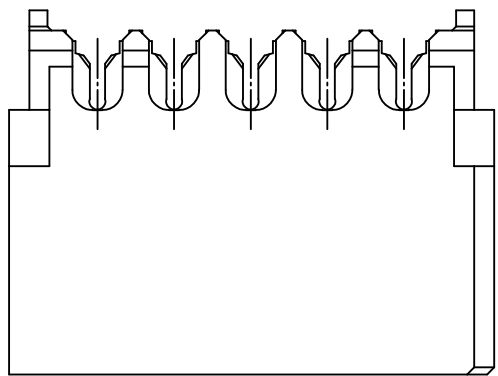
WITH LATCH TYPE



REMOVE PART NUMBER EC NO: SH2012-0062 DRWN: XQZHANG 2012/01/18 CHKD: XQZHANG 2012/01/30 APPR: ATIN 2012/02/02	QUALITY SYMBOLS $\nabla_A = 0$ $\nabla_C = 0$ $\nabla_P = 0$	GENERAL TOLERANCES (UNLESS SPECIFIED)		DIMENSION STYLE MM ONLY		SCALE 4:1	DESIGN UNITS METRIC	THIRD ANGLE PROJECTION		
		4 PLACES ± --- ± ---	3 PLACES ± --- ± ---	2 PLACES ± 0.25 ± ---	1 PLACE ± 0.30 ± ---	DRAWN BY GRATE MA	DATE 2004/01/17	TITLE SERIAL ATA POWER CONNECTOR IDT TYPE		
		ANGULAR ± 1 °				CHECKED BY YA JUN	DATE 2004/01/17	APPROVED BY SAM		
		DRAFT WHERE APPLICABLE MUST REMAIN WITHIN DIMENSIONS				MATERIAL NO. SEE SHEET 3	DATE 2004/01/17	DOCUMENT NO. SD-67926-001	SHEET NO. 1 OF 3	

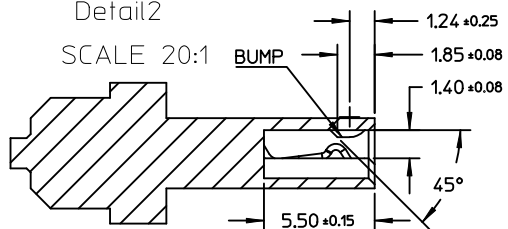


WITHOUT LATCH TYPE

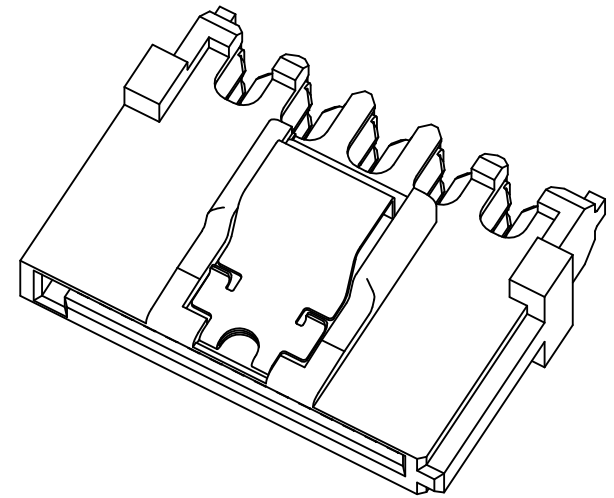
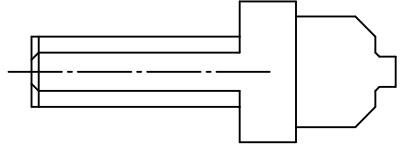


Detail2

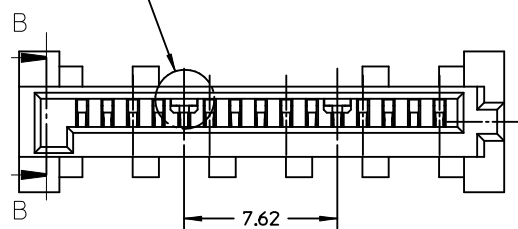
SCALE 20:1



SECTION B-B



See Detail2



NOTES:
OTHER INFORMATION REFER TO SHEET 1

SEE SHEET 1 EC NO: SH2012-0062 DRWN: XZZHANG CHKD: XZZHANG APPR: AYIN	2012/01/18 2012/01/30 2012/02/02	QUALITY SYMBOLS ▽=0 ▽=0 ▽=0	GENERAL TOLERANCES (UNLESS SPECIFIED)		DIMENSION STYLE	SCALE	DESIGN UNITS	THIRD ANGLE PROJECTION		
					MM ONLY	4:1	METRIC			
			4 PLACES	± ---	± ---	DRAWN BY	DATE	TITLE		
			3 PLACES	± ---	± ---	GRATE MA	2004/01/17	SERIAL ATA POWER CONNECTOR IDT TYPE		
2 PLACES	± 0.25	± ---	CHECKED BY	DATE						
1 PLACE	± 0.30	± ---	YA JUN	2004/01/17	MOLEX INCORPORATED					
ANGULAR ± 1°			APPROVED BY	DATE						
DRAFT WHERE APPLICABLE MUST REMAIN WITHIN DIMENSIONS			SAM	2004/01/17	DOCUMENT NO.		SHEET NO.			
			SEE SHEET 3		SD-67926-001		2 OF 3			
			THIS DRAWING CONTAINS INFORMATION THAT IS PROPRIETARY TO MOLEX INCORPORATED AND SHOULD NOT BE USED WITHOUT WRITTEN PERMISSION							

P/N	RECOMMENDED WIRE SIZE	PLATE TYPE	REMARK
67926-0001	18AWG	GOLD FLASH	WITH LATCH, WITHOUT BUMP
67926-0401	22AWG	0.76 MICRON GOLD PLATED	
67926-0002	18AWG		
67926-0302	20AWG	0.38 MICRON GOLD PLATED	
67926-0402	22AWG		
67926-0005	18AWG	GOLD FLASH	
67926-0305	20AWG		
67926-0405	22AWG		
67926-0021	18AWG	0.76 MICRON GOLD PLATED	WITH LATCH, WITH BUMP
67926-0321	20AWG		
67926-0421	22AWG		
67926-0022	18AWG		
67926-0322	20AWG	0.38 MICRON GOLD PLATED	WITHOUT LATCH, WITH BUMP
67926-0422	22AWG		
67926-0025	18AWG	GOLD FLASH	
67926-0425	22AWG		
67926-0011	18AWG		
67926-0311	20AWG	0.76 MICRON GOLD PLATED	
67926-0411	22AWG		
67926-0012	18AWG	0.38 MICRON GOLD PLATED	
67926-0412	22AWG		
67926-0015	18AWG		
67926-0315	20AWG		
67926-0415	22AWG		

SEE SHEET 1 EC NO: SH2012-0062 DRWN: XQZHANG CHKD: XQZHANG APPR: AYIN	2012/01/18 2012/01/30 2012/02/02	DESCRIPTION REV	QUALITY SYMBOLS	GENERAL TOLERANCES (UNLESS SPECIFIED)		DIMENSION STYLE		SCALE	DESIGN UNITS	THIRD ANGLE PROJECTION	
			$F_A=0$ $F_G=0$ $F_P=0$	mm	INCH	MM ONLY	4:1	METRIC	DRAWN BY DATE GRATE MA 2004/01/17		
				4 PLACES ± --- ± ---	3 PLACES ± --- ± ---	CHECKED BY DATE	TITLE		SERIAL ATA POWER CONNECTOR IDT TYPE		
				2 PLACES ± 0.25 ± ---	1 PLACE ± 0.30 ± ---	YA JUN 2004/01/17	APPROVED BY DATE				
	ANGULAR ± 1°		SAM 2004/01/17	MATERIAL NO.		DOCUMENT NO.		SHEET NO.			
DRAFT WHERE APPLICABLE MUST REMAIN WITHIN DIMENSIONS			SEE TABLE		SD-67926-001		3 OF 3				
			SIZE A3		THIS DRAWING CONTAINS INFORMATION THAT IS PROPRIETARY TO MOLEX INCORPORATED AND SHOULD NOT BE USED WITHOUT WRITTEN PERMISSION						