



Chipsmall Limited consists of a professional team with an average of over 10 year of expertise in the distribution of electronic components. Based in Hongkong, we have already established firm and mutual-benefit business relationships with customers from,Europe,America and south Asia,supplying obsolete and hard-to-find components to meet their specific needs.

With the principle of “Quality Parts,Customers Priority,Honest Operation,and Considerate Service”,our business mainly focus on the distribution of electronic components. Line cards we deal with include Microchip,ALPS,ROHM,Xilinx,Pulse,ON,Everlight and Freescale. Main products comprise IC,Modules,Potentiometer,IC Socket,Relay,Connector.Our parts cover such applications as commercial,industrial, and automotives areas.

We are looking forward to setting up business relationship with you and hope to provide you with the best service and solution. Let us make a better world for our industry!



## Contact us

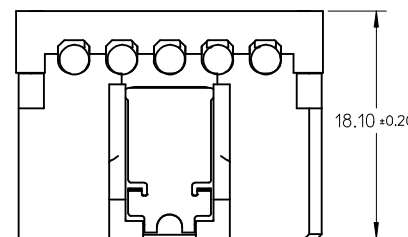
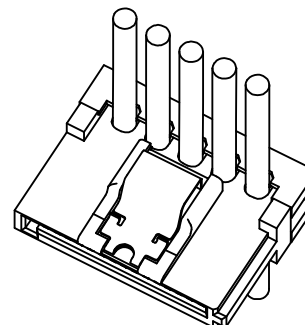
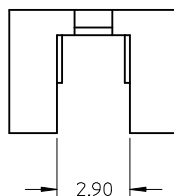
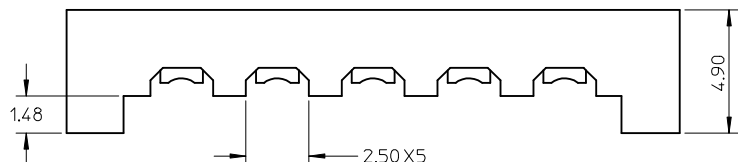
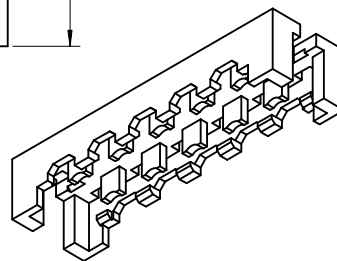
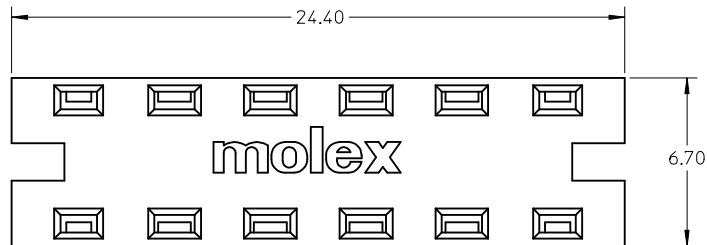
Tel: +86-755-8981 8866 Fax: +86-755-8427 6832

Email & Skype: info@chipsmall.com Web: www.chipsmall.com

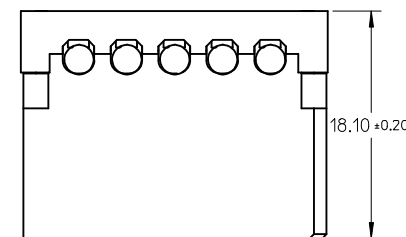
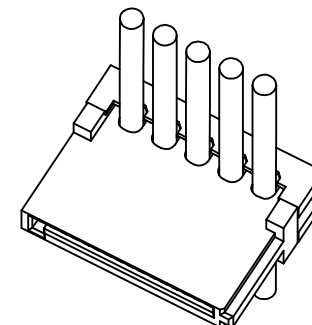
Address: A1208, Overseas Decoration Building, #122 Zhenhua RD., Futian, Shenzhen, China



10 9 8 7 6 5 4 3 2 1



APPLICATION FOR WITH LATCH TYPE



APPLICATION FOR WITHOUT LATCH TYPE

P/N	REMARK
67926-0041	NON HALOGEN-FREE
67926-0841	HALOGEN-FREE

NOTE

- 1 MATERIAL: THERMAL PLASTIC, COLOR : BLACK UL94V-0.
- 2 THIS COVER IS FEED THROUGH TYPE, IT IS AVAILABLE FOR 67926-000\*/002\*(WITH LATCH), 67926-001\*(WITHOUT LATCH).
- 3 PACKAGE SPEC:
  - 3.1 1000 PCS IN ONE BAG.
  - 3.2 3000 PCS(3 PAGES) IN ONE INNER CARTON.
  - 3.3 12,000 PCS(4 INNER CARTONS) IN ONE OUTER CARTON.

ADD PART NUMBER EC NO: SH2009-0536 TDRWN:XJ.SONG 2009/05/05 CHKD:XJ.SONG 2009/06/19 APPR:HWANG 2009/06/23	QUALITY SYMBOLS	GENERAL TOLERANCES (UNLESS SPECIFIED)	DIMENSION STYLE	SCALE	DESIGN UNITS	THIRD ANGLE PROJECTION
	▼=0 ▽=0	mm INCH 4 PLACES ± --- ± --- 3 PLACES ± --- ± --- 2 PLACES ± 0.15 ± --- 1 PLACE ± 0.25 ± --- ANGULAR ± 1 °	MM ONLY	5:1	METRIC	
	REV	DESCRIPTION	DRAWN BY	DATE	TITLE	
			GRATE MA	2004/04/25	COVER FOR SATA POWER CONNECTOR IDT TYPE	

APPROVED BY	DATE	MOLEX INCORPORATED SD-67926-004
SAM	2004/04/25	
MATERIAL NO.	DOCUMENT NO.	SHEET NO.
SEE TABLE	SD-67926-004	1 OF 1

SIZE	THIS DRAWING CONTAINS INFORMATION THAT IS PROPRIETARY TO MOLEX INCORPORATED AND SHOULD NOT BE USED WITHOUT WRITTEN PERMISSION
A3	

DRAFT WHERE APPLICABLE MUST REMAIN WITHIN DIMENSIONS	
--	--

9 8 7 6 5 4 3 2 1