



Chipsmall Limited consists of a professional team with an average of over 10 year of expertise in the distribution of electronic components. Based in Hongkong, we have already established firm and mutual-benefit business relationships with customers from,Europe,America and south Asia,supplying obsolete and hard-to-find components to meet their specific needs.

With the principle of “Quality Parts,Customers Priority,Honest Operation,and Considerate Service”,our business mainly focus on the distribution of electronic components. Line cards we deal with include Microchip,ALPS,ROHM,Xilinx,Pulse,ON,Everlight and Freescale. Main products comprise IC,Modules,Potentiometer,IC Socket,Relay,Connector.Our parts cover such applications as commercial,industrial, and automotives areas.

We are looking forward to setting up business relationship with you and hope to provide you with the best service and solution. Let us make a better world for our industry!



Contact us

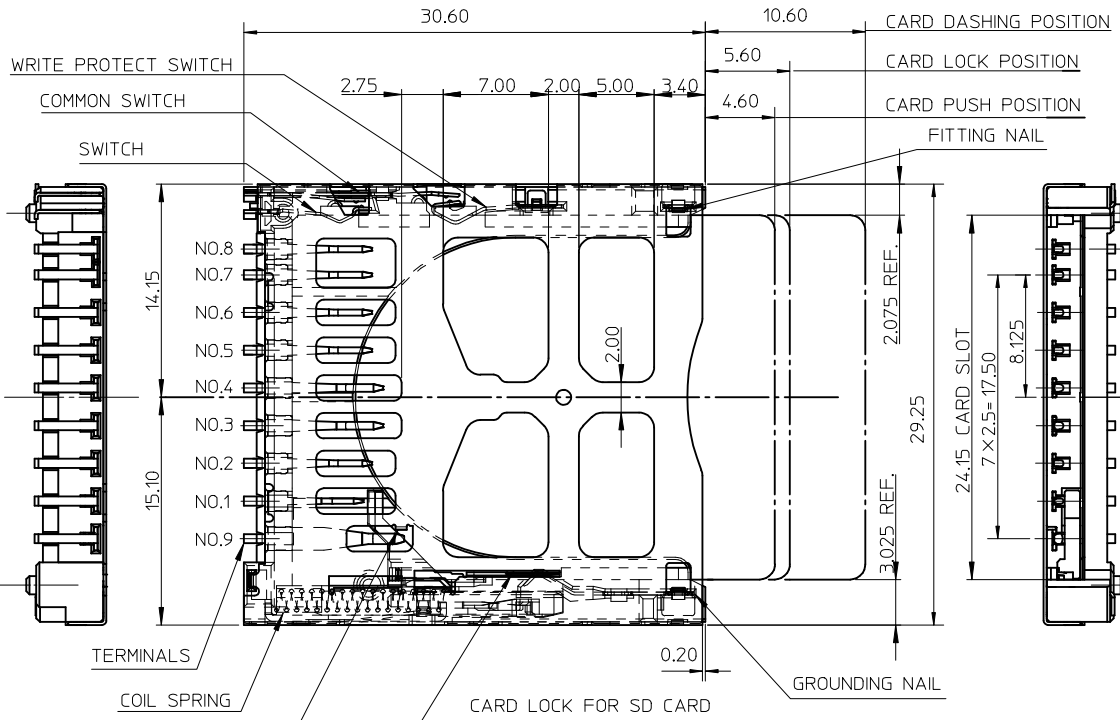
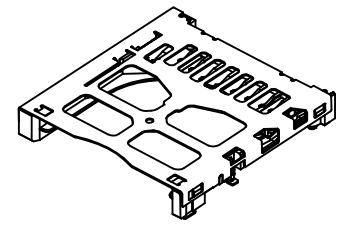
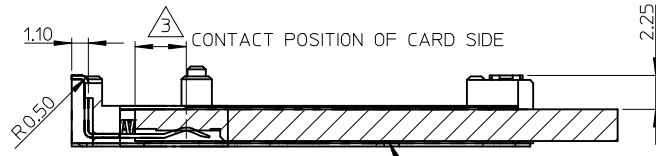
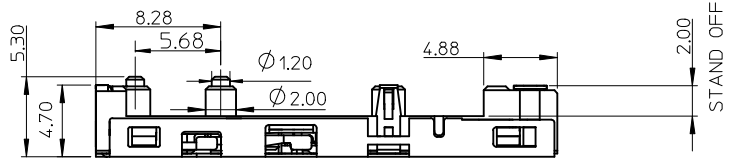
Tel: +86-755-8981 8866 Fax: +86-755-8427 6832

Email & Skype: info@chipsmall.com Web: www.chipsmall.com

Address: A1208, Overseas Decoration Building, #122 Zhenhua RD., Futian, Shenzhen, China



10 9 8 7 6 5 4 3 2 1



NOTES:
 1.HOUSING: HIGH TEMPERATURE THERMOPLASTIC, GLASS FIBER FILLED,UL94V-0. COLOR: BLACK
 TERMINAL: COPPER ALLOY, SELECTIVE Au PLATING
 METEL SHELL: STAINLESS STEEL
 EACH SWITCHES: COPPER ALLOY, SELECTIVE Au PLATING.
 EACH NAILS: COPPER ALLOY, SELECTIVE AU PLATING.
 COIL SPRING: STEEL WIRE.
 CAM PIN: STAINLESS STEEL
 2.TERMINAL AND NAIL COPLANARITY TO BE 0.1MAX
 3.CONTACT POSITION OF CARD SIDE

TERMINAL NO.	CONTACT POSITION
NO.1	2.4
NO.2,5,6,7,8	2.9
NO.3,4	3.4
NO.9	5.2

4.OPEN/CLOSE OF EACH SWITCH

	WRITE PROTECT SWITCH		SWITCH
	WRITE PROTECT POSITION	WRITE ENABLE POSITION	
CARD UNINSERTION	OPEN	OPEN	OPEN
CARD HALF INSERTION	CLOSE	CLOSE	OPEN
CARD INSERTION	OPEN	CLOSE	CLOSE

- 5.WHEN DELIVERING, THE PUSH/PUSH MECHANISM IS IN THE STATE OF THE UNLOCK.(CARD DASHING OUT POSITION)
- 6.CARD READ ONLY BY THE TIME THE CARD DETECTION.
- 7.I/O CONTACTS, BASE ON SD I/O ASSOC. REV.G.
- 8.PRODUCT SPECIFICATION: SEE TABLE
- 9.TERMINAL 1 TO BE SIGNAL DETECTING WHEN SD CARD INSERTING.
- 10.PRODUCT COMPLIANT TO RoHS DIRECTIVE 2002/95/EC AND ELV 2000/53/EC.

PART NO.	DESCRIPTION	PRODUCT SPECIFICATION	REMARK
67955-8001	STANDARD	PS-67913-003	FOR SD ONLY
67955-8002	STADARD W/O CARD LOCK PIN		SD/MMC

UPDATE DRAWING
 EC NO: SH2009-0154
 DRWN:LSONG 2008/09/18
 CHKD:XJ.SONG 2008/09/18
 APPR:HMWANG 2008/10/23

QUALITY SYMBOLS
 ▽=0
 ▽=0
 GENERAL TOLERANCES (UNLESS SPECIFIED)
 mm INCH
 4 PLACES ± --- ± ---
 3 PLACES ± --- ± ---
 2 PLACES ± 0.25 ± ---
 1 PLACE ± 0.25 ± ---
 ANGULAR ± 3 °
 DRAFT WHERE APPLICABLE MUST REMAIN WITHIN DIMENSIONS

DIMENSION STYLE
MM ONLY
 DRAWN BY: QLZHANG
 CHECKED BY: HARVEY
 APPROVED BY: VINCENT
 DATE: 2005/04/06
 DATE: 2005/04/06
 DATE: 2005/04/06

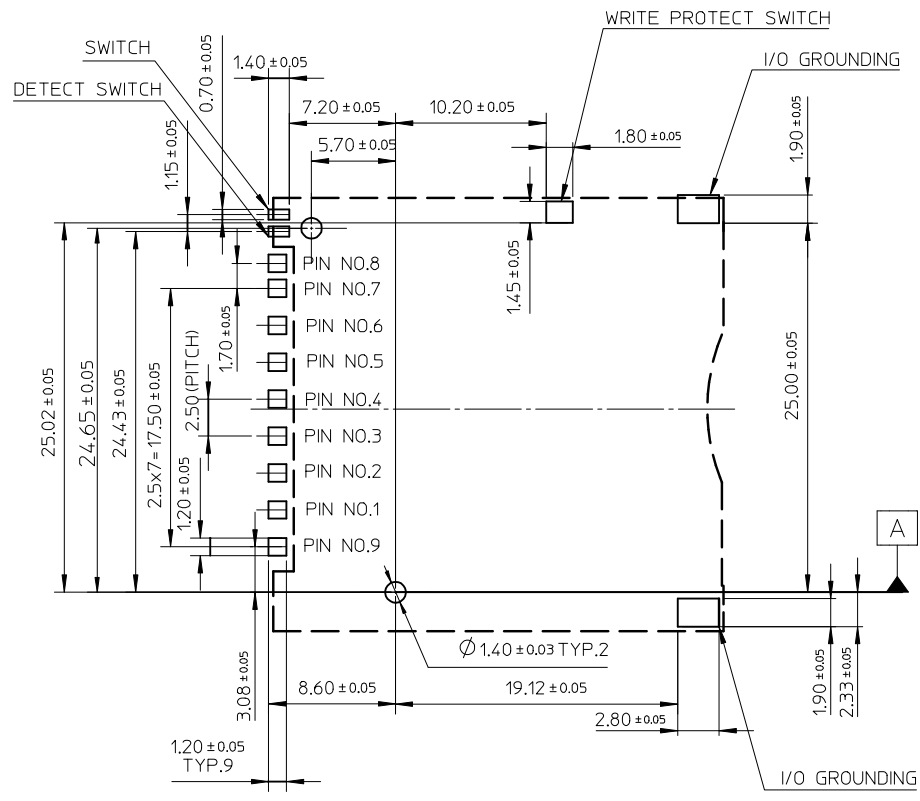
SCALE: 3:1
 DESIGN UNITS: METRIC
 THIRD ANGLE PROJECTION
 TITLE: SD/I/O CARD CONN.STAND OFF 2.0 MM(LEAD-FREE, PUSH-PUSH & REVERSE)
 MOLEX MOLEX INCORPORATED
 MATERIAL NO. SEE TABLE
 DOCUMENT NO. SD-67955-003
 SHEET NO. 1 OF 3
 THIS DRAWING CONTAINS INFORMATION THAT IS PROPRIETARY TO MOLEX INCORPORATED AND SHOULD NOT BE USED WITHOUT WRITTEN PERMISSION

9 8 7 6 5 4 3 2 1

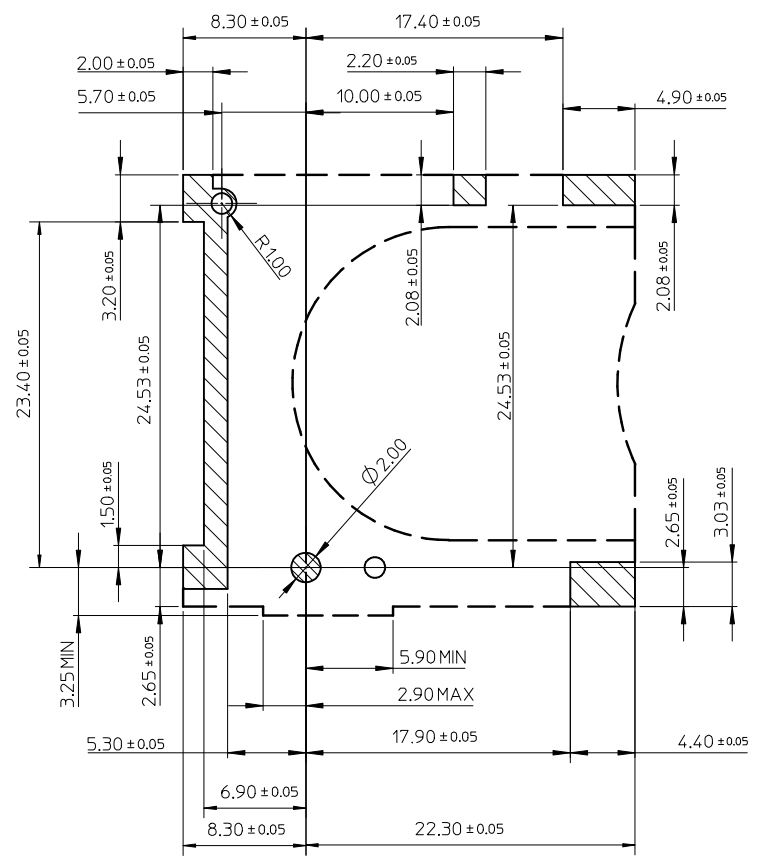
10 9 8 7 6 5 4 3 2 1

F
E
D
C
B
A

F
E
D
C
B
A



RECOMMENDED PCB PATTERN LAYOUT

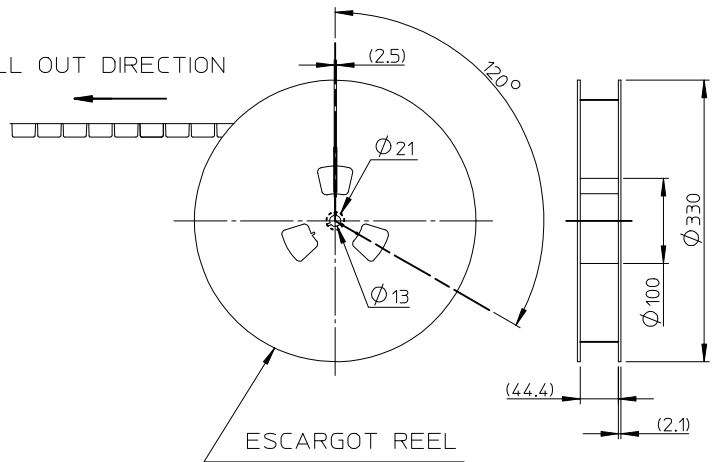


STAND OFF AREA FOR PATTERN PROHIBITION

<p>SEE SHEET 1 EC NO: SH2009-0154 DRAWN: SONG9 CHKD: XJSONG APPR: HWANG</p>	<p>DESCRIPTION REV</p>	<p>QUALITY SYMBOLS ▽=0 ◻=0</p>	<p>GENERAL TOLERANCES (UNLESS SPECIFIED)</p> <table border="1"> <thead> <tr> <th></th> <th>mm</th> <th>INCH</th> </tr> </thead> <tbody> <tr> <td>4 PLACES</td> <td>± ---</td> <td>± ---</td> </tr> <tr> <td>3 PLACES</td> <td>± ---</td> <td>± ---</td> </tr> <tr> <td>2 PLACES</td> <td>± 0.25</td> <td>± ---</td> </tr> <tr> <td>1 PLACE</td> <td>± 0.25</td> <td>± ---</td> </tr> <tr> <td colspan="3">ANGULAR ± 3 °</td> </tr> </tbody> </table>		mm	INCH	4 PLACES	± ---	± ---	3 PLACES	± ---	± ---	2 PLACES	± 0.25	± ---	1 PLACE	± 0.25	± ---	ANGULAR ± 3 °			<p>DIMENSION STYLE MM ONLY</p>	<p>SCALE 3:1</p>	<p>DESIGN UNITS METRIC</p>	<p>THIRD ANGLE PROJECTION</p>
			mm	INCH																					
		4 PLACES	± ---	± ---																					
		3 PLACES	± ---	± ---																					
2 PLACES	± 0.25	± ---																							
1 PLACE	± 0.25	± ---																							
ANGULAR ± 3 °																									
<p>SEE SHEET 1</p>	<p>DRAFT WHERE APPLICABLE MUST REMAIN WITHIN DIMENSIONS</p>	<table border="1"> <thead> <tr> <th>DRAWN BY</th> <th>DATE</th> <th>TITLE</th> </tr> </thead> <tbody> <tr> <td>QLZHANG</td> <td>2005/04/06</td> <td rowspan="3">SD/IO CARD CONN.STAND OFF 2.0 MM(LEAD-FREE, PUSH-PUSH & REVERSE)</td> </tr> <tr> <td>CHECKED BY</td> <td>DATE</td> </tr> <tr> <td>HARVEY</td> <td>2005/04/06</td> </tr> <tr> <td>APPROVED BY</td> <td>DATE</td> <td rowspan="2">MOLEX INCORPORATED</td> </tr> <tr> <td>VINCENT</td> <td>2005/04/06</td> </tr> </tbody> </table>	DRAWN BY	DATE	TITLE	QLZHANG	2005/04/06	SD/IO CARD CONN.STAND OFF 2.0 MM(LEAD-FREE, PUSH-PUSH & REVERSE)	CHECKED BY	DATE	HARVEY	2005/04/06	APPROVED BY	DATE	MOLEX INCORPORATED	VINCENT	2005/04/06	<p>MOLEX</p>	<p>MOLEX INCORPORATED</p>	<p>SHEET NO. 2 OF 3</p>					
DRAWN BY	DATE	TITLE																							
QLZHANG	2005/04/06	SD/IO CARD CONN.STAND OFF 2.0 MM(LEAD-FREE, PUSH-PUSH & REVERSE)																							
CHECKED BY	DATE																								
HARVEY	2005/04/06																								
APPROVED BY	DATE	MOLEX INCORPORATED																							
VINCENT	2005/04/06																								
<p>SIZE A3</p>	<p>THIS DRAWING CONTAINS INFORMATION THAT IS PROPRIETARY TO MOLEX INCORPORATED AND SHOULD NOT BE USED WITHOUT WRITTEN PERMISSION</p>	<p>SEE SHEET 1</p>	<p>SD-67955-003</p>	<p>DOCUMENT NO.</p>	<p>SHEET NO. 2 OF 3</p>																				
<p>THIS DRAWING CONTAINS INFORMATION THAT IS PROPRIETARY TO MOLEX INCORPORATED AND SHOULD NOT BE USED WITHOUT WRITTEN PERMISSION</p>																									

9 8 7 6 5 4 3 2 1

PULL OUT DIRECTION

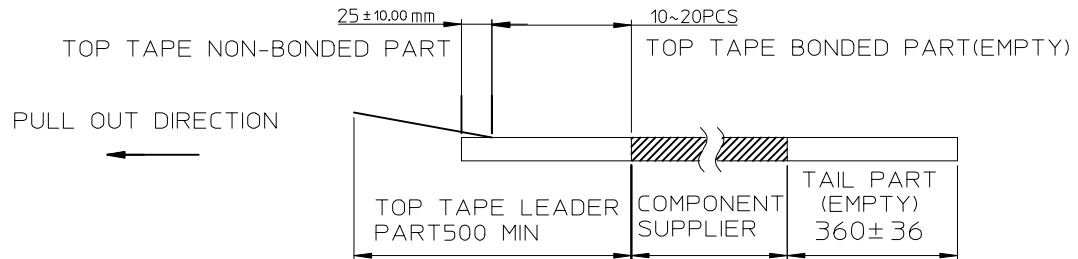


ESCARGOT REEL

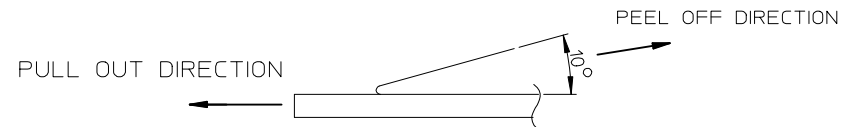
NOTES

1. NUMBER OF CONNECTORS: 250 PCS/REEL

2.

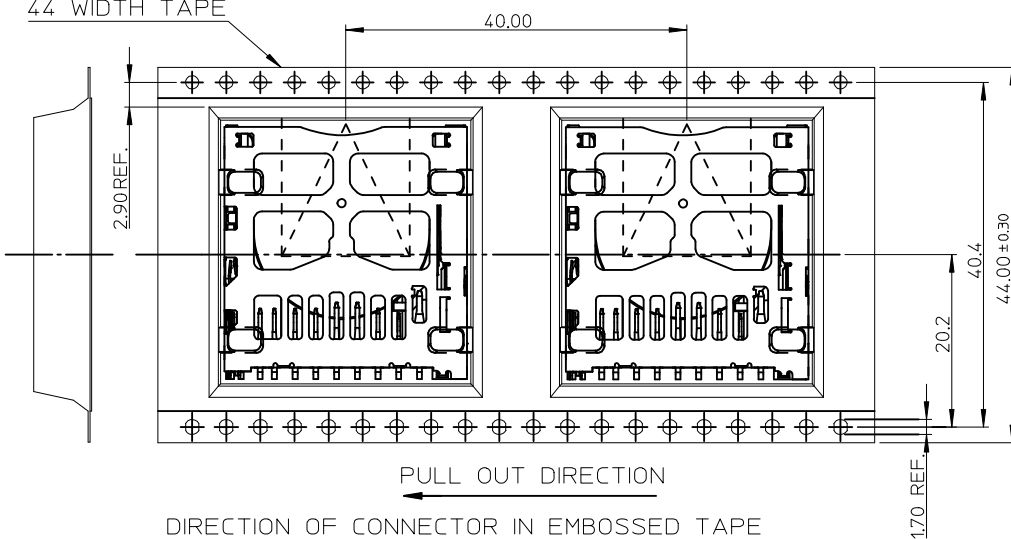


3. PEEL OFF FORCE OF TOP TAPE: 0.1~1.3 N (10.2~130gf)
 PEELING DIRECTION AS SHOWN IN FOLLOWING FIG.)
 (PEEL OFF SPEED: 300mm/min.REF.)



4. PACKAGING DRAWING REFERS TO PK-67955-001.

44 WIDTH TAPE



DIRECTION OF CONNECTOR IN EMBOSSED TAPE

SEE SHEET 1	EC NO: SH2009-0154	2008/09/18
	DR: WNLSONG09	2008/09/18
	CHKD: XJSONG	2008/09/18
	APPR: HWANG	2008/10/23

QUALITY SYMBOLS	▽=0
	∇=0

GENERAL TOLERANCES (UNLESS SPECIFIED)	mm	INCH	
	4 PLACES	± ---	± ---
	3 PLACES	± ---	± ---
	2 PLACES	± 0.25	± ---
	1 PLACE	± 0.25	± ---
	ANGULAR ± 3 °		
DRAFT WHERE APPLICABLE MUST REMAIN WITHIN DIMENSIONS			

DIMENSION STYLE		SCALE	DESIGN UNITS	THIRD ANGLE PROJECTION
MM ONLY		1:1	METRIC	
DRAWN BY	DATE	TITLE		
QLZHANG	2005/04/06	SD/IO CARD CONN.STAND OFF 2.0 MM(LEAD-FREE, PUSH-PUSH & REVERSE)		
CHECKED BY	DATE	MOLEX INCORPORATED		
HARVEY	2005/04/06	SD-67955-003		
APPROVED BY	DATE	SHEET NO.		
VINCENT	2005/04/06	3 OF 3		
MATERIAL NO.	SEE SHEET 1			

THIS DRAWING CONTAINS INFORMATION THAT IS PROPRIETARY TO MOLEX INCORPORATED AND SHOULD NOT BE USED WITHOUT WRITTEN PERMISSION	
---	--