



Chipsmall Limited consists of a professional team with an average of over 10 year of expertise in the distribution of electronic components. Based in Hongkong, we have already established firm and mutual-benefit business relationships with customers from,Europe,America and south Asia,supplying obsolete and hard-to-find components to meet their specific needs.

With the principle of "Quality Parts,Customers Priority,Honest Operation,and Considerate Service",our business mainly focus on the distribution of electronic components. Line cards we deal with include Microchip,ALPS,ROHM,Xilinx,Pulse,ON,Everlight and Freescale. Main products comprise IC,Modules,Potentiometer,IC Socket,Relay,Connector.Our parts cover such applications as commercial,industrial, and automotives areas.

We are looking forward to setting up business relationship with you and hope to provide you with the best service and solution. Let us make a better world for our industry!



Contact us

Tel: +86-755-8981 8866 Fax: +86-755-8427 6832

Email & Skype: info@chipsmall.com Web: www.chipsmall.com

Address: A1208, Overseas Decoration Building, #122 Zhenhua RD., Futian, Shenzhen, China



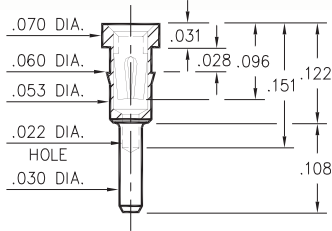
PIN RECEPTACLES

FOR .015" - .025" DIAMETER PINS

0501

0501-0-15-XX-30-XX-04-0

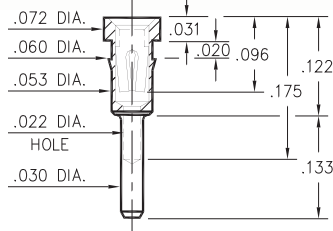
Press-fit in .057 mounting hole



8427

8427-0-15-XX-30-XX-04-0

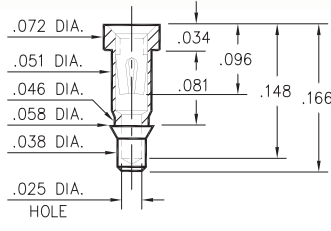
Press-fit in .057 mounting hole



1434

1434-0-15-XX-30-XX-10-0

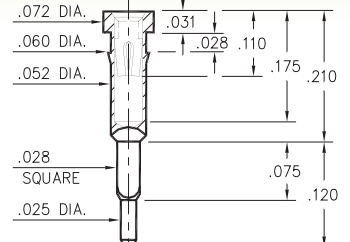
Press-fit in .055 mounting hole



9970

9970-0-15-XX-30-XX-04-0

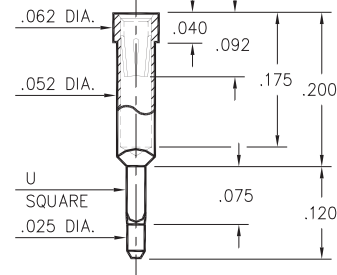
Square press-fit in .032 ± .002 plated through-hole



5970

5970-X-15-XX-32-XX-04-0

Square press-fit for .032 or .039 ± .002 plated through-hole

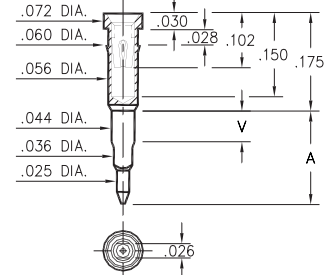


Basic Part Number	U Square	Mounting Hole
5970-1	.028	.032
5970-2	.034	.039

0477/0478

047X-0-18-XX-30-XX-04-0

Solderless press-fit in .038 ± .003 / -.002 plated through-hole (use 1.1mm drill prior to plating)

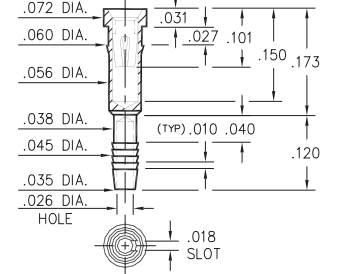


Basic Part Number	Board Thickness	Length V	Length A
0477-0	.062	.075	.175
0478-0	.125	.140	.250

4612

4612-0-31-XX-30-XX-04-0

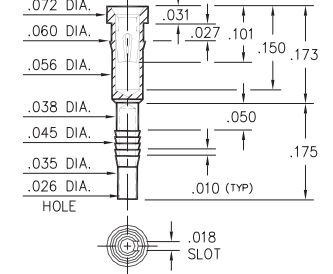
Compliant press-fit in .040 ± .003 plated through-hole. For .060" → .100" thick board



4613

4613-0-31-XX-30-XX-04-0

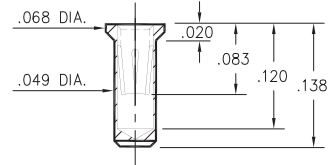
Compliant press-fit in .040 ± .003 plated through-hole. For .090" → .130" thick board



0680

0680-0-15-XX-32-XX-10-0

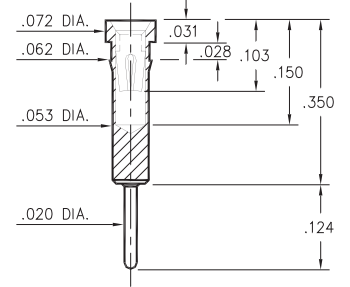
Solder mount in .051 min. mounting hole. Also available on 16mm wide carrier tape: 1,700 parts per 13" reel. Order as: 0680-0-57-XX-32-XX-10-0



0149

0149-0-15-XX-30-XX-04-0

Press-fit in .059 mounting hole



SPECIFICATIONS:

Shell Material: Brass Alloy 360, 1/2 Hard

Contact Material: Beryllium Copper Alloy 172, HT

Dimensions: Inches

Tolerances On: Lengths: ± .005

Diameters: ± .002

Angles: ± 2°



ORDER CODE: XXXX - X - XX - XX - XX - XX - XX - 0

BASIC PART #

SPECIFY SHELL FINISH:

- 01 200 μ" TIN/LEAD OVER NICKEL
- ◆ 80 200 μ" TIN OVER NICKEL (RoHS)
- ◆ 15 10 μ" GOLD OVER NICKEL (RoHS)

SPECIFY CONTACT FINISH:

- 02 100 μ" TIN/LEAD OVER NICKEL
- ◆ 84 100 μ" TIN OVER NICKEL (RoHS)
- ◆ 27 30 μ" GOLD OVER NICKEL (RoHS)

SELECT CONTACT:

#30 or #32 CONTACT (DATA ON PAGE 253)

(For alternate contact choices, see groups B and C on page 248)

