



Chipsmall Limited consists of a professional team with an average of over 10 year of expertise in the distribution of electronic components. Based in Hongkong, we have already established firm and mutual-benefit business relationships with customers from,Europe,America and south Asia,supplying obsolete and hard-to-find components to meet their specific needs.

With the principle of “Quality Parts,Customers Priority,Honest Operation,and Considerate Service”,our business mainly focus on the distribution of electronic components. Line cards we deal with include Microchip,ALPS,ROHM,Xilinx,Pulse,ON,Everlight and Freescale. Main products comprise IC,Modules,Potentiometer,IC Socket,Relay,Connector.Our parts cover such applications as commercial,industrial, and automotives areas.

We are looking forward to setting up business relationship with you and hope to provide you with the best service and solution. Let us make a better world for our industry!



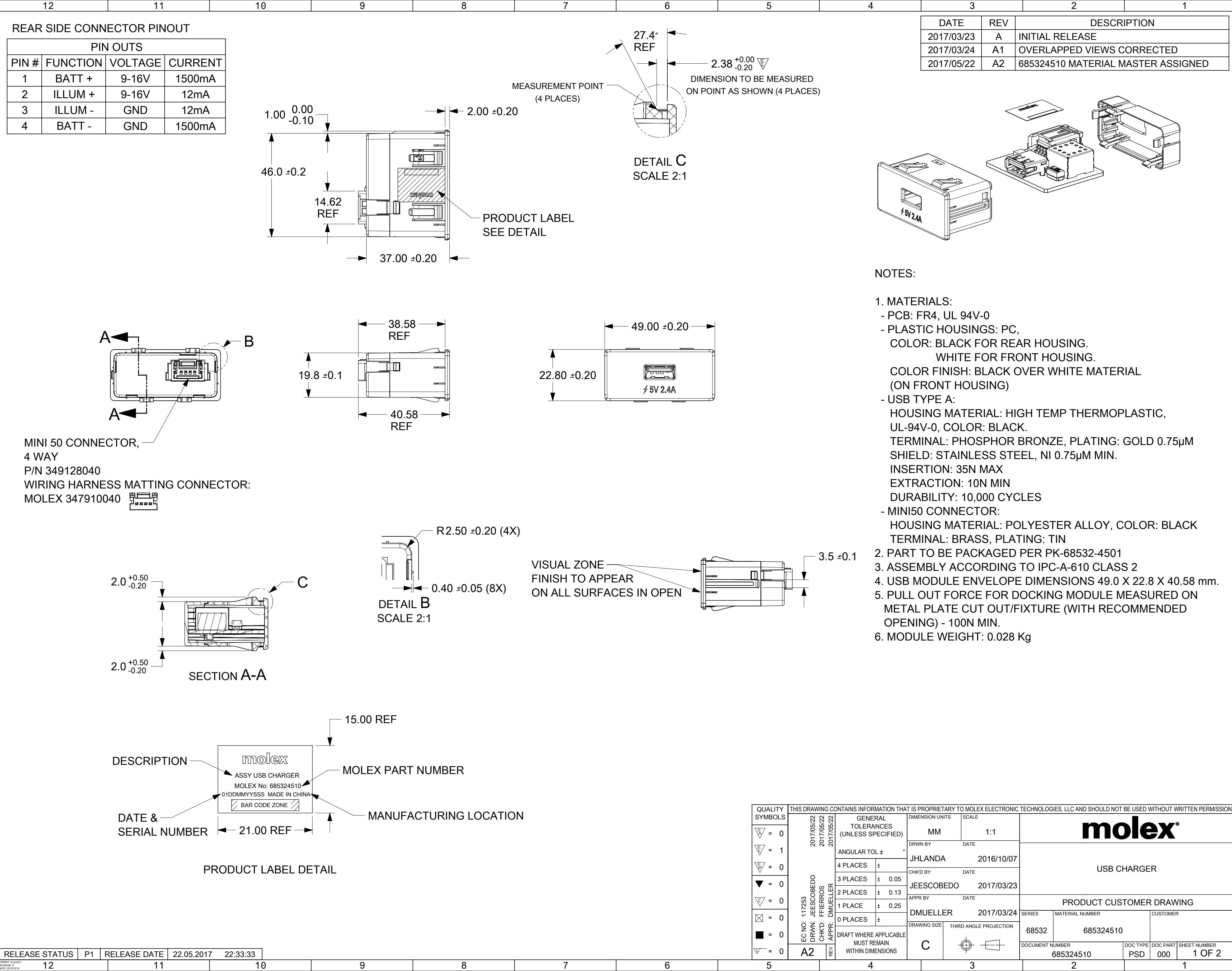
Contact us

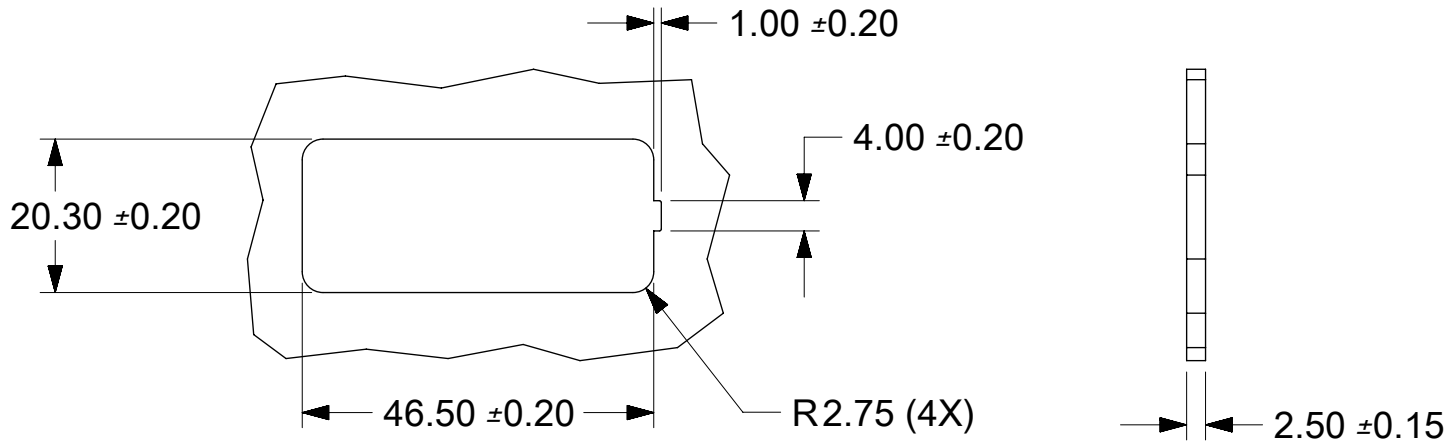
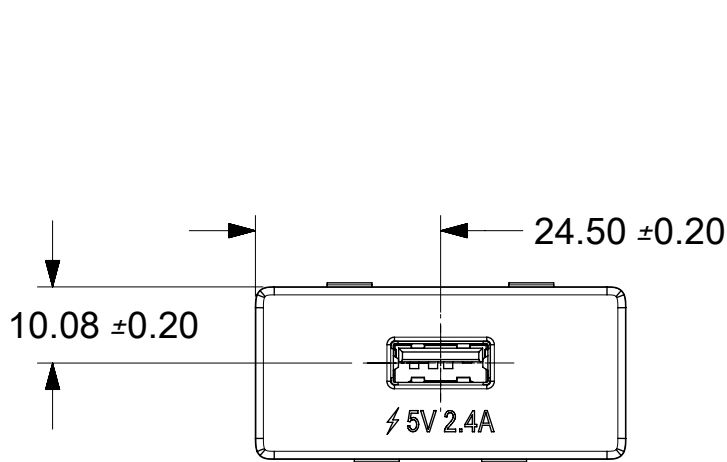
Tel: +86-755-8981 8866 Fax: +86-755-8427 6832

Email & Skype: info@chipsmall.com Web: www.chipsmall.com

Address: A1208, Overseas Decoration Building, #122 Zhenhua RD., Futian, Shenzhen, China

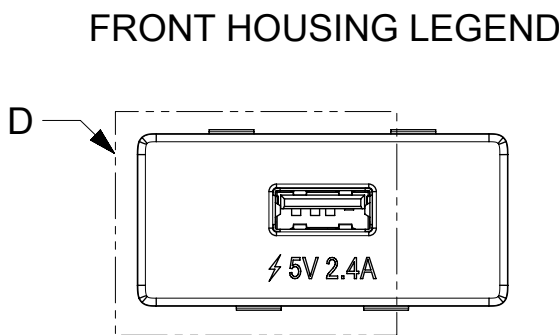




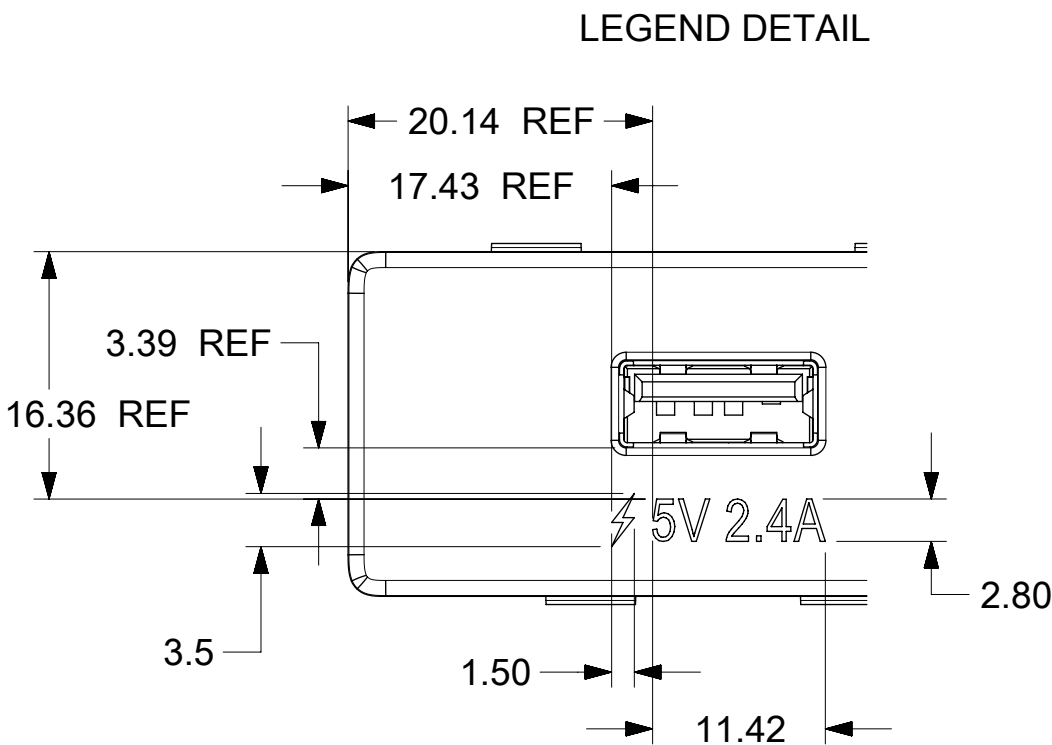


RECOMMENDED PANEL OPENING

PANEL THICKNESS



FRONT HOUSING LEGEND



LEGEND DETAIL

DETAIL D
SCALE 2:1

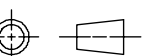
NOTES:

1. OPERATING TEMP: -40°C TO 85°C
2. STORAGE TEMP:-40°C TO 90°C
3. FLAMMABILITY IN ACCORDANCE WITH ISO 3795: 1989
4. COMPONENT SHALL MEET THE REGULATIONS:
 - EEC DERECTIVE 2000/53/EC, 2002/525/EC:
 - REGULATION AGAINST USAGE IF
 - HAZARDOUS & NON-RECYCLABLE COMPONENTS
5. USB DOCKING MODULE QUALIFIED AS PER DVP.
6. DEDICATED CHARGING PORT:
 - USB BATTERY CHARGING SPECIFICATION BC1.2
 - YD/T 1591-2009
 - DIVIDER MODE (APPLE 12W)
 - 1.2 V MODE

PRINTING DETAILS:

1. FONT: MYRIAD PRO (NORMAL)
- COLOR: WHITE (HOUSING MATERIAL)
- PROCESS: LASER ETCHING

ILLUMINATION DETAIL						
MOLEX P#	LEGEND	COLOR	COLOR CO-ORDINATES	No OF LEDs/LIGHT GUIDE	LUMINACE INTENSITY (cd/sq m)	WAVELENGTH (nm)
685324510	CHARGING ICONS	WHITE	(Cx=0.33±0.02, Cy=0.32±0.02)	1	12±3	-----

QUALITY SYMBOLS		THIS DRAWING CONTAINS INFORMATION THAT IS PROPRIETARY TO MOLEX ELECTRONIC TECHNOLOGIES, LLC AND SHOULD NOT BE USED WITHOUT WRITTEN PERMISSION															
<div><div><div>▽</div><div>=</div><div>0</div></div><div><div>▽</div><div>=</div><div>0</div></div><div><div>▽</div><div>=</div><div>0</div></div><div><div>▼</div><div>=</div><div>0</div></div><div><div>▽</div><div>=</div><div>0</div></div><div><div>⊠</div><div>=</div><div>0</div></div><div><div>■</div><div>=</div><div>0</div></div><div><div>▽</div><div>=</div><div>0</div></div></div>	<div><div>2017/05/22</div><div>DRWN: JEESCOBEDO</div><div>2017/05/22</div><div>CHKD: FFIERRROS</div><div>2017/05/22</div><div>REV APPR: DMUELLER</div></div>	GENERAL TOLERANCES (UNLESS SPECIFIED)		DIMENSION UNITS		SCALE		<div><div>molex®</div><div>USB CHARGER</div></div>									
				MM		1:1											
				DRWN BY		DATE											
				ANGULAR TOL ±		°		PRODUCT CUSTOMER DRAWING									
				4 PLACES		±											
				3 PLACES		± 0.05											
				2 PLACES		± 0.13		SERIES MATERIAL NUMBER CUSTOMER									
				1 PLACE		± 0.25											
				0 PLACES		±											
				DRAFT WHERE APPLICABLE MUST REMAIN WITHIN DIMENSIONS		DRAWING SIZE		THIRD ANGLE PROJECTION		DOCUMENT NUMBER		DOC TYPE		DOC PART		SHEET NUMBER	
				A2		C				68532		PSD		000		2 OF 2	
										685324510							