



Chipsmall Limited consists of a professional team with an average of over 10 year of expertise in the distribution of electronic components. Based in Hongkong, we have already established firm and mutual-benefit business relationships with customers from,Europe,America and south Asia,supplying obsolete and hard-to-find components to meet their specific needs.

With the principle of "Quality Parts,Customers Priority,Honest Operation,and Considerate Service",our business mainly focus on the distribution of electronic components. Line cards we deal with include Microchip,ALPS,ROHM,Xilinx,Pulse,ON,Everlight and Freescale. Main products comprise IC,Modules,Potentiometer,IC Socket,Relay,Connector.Our parts cover such applications as commercial,industrial, and automotives areas.

We are looking forward to setting up business relationship with you and hope to provide you with the best service and solution. Let us make a better world for our industry!



Contact us

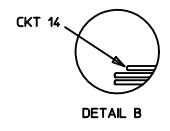
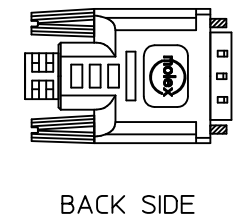
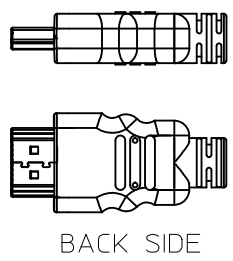
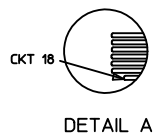
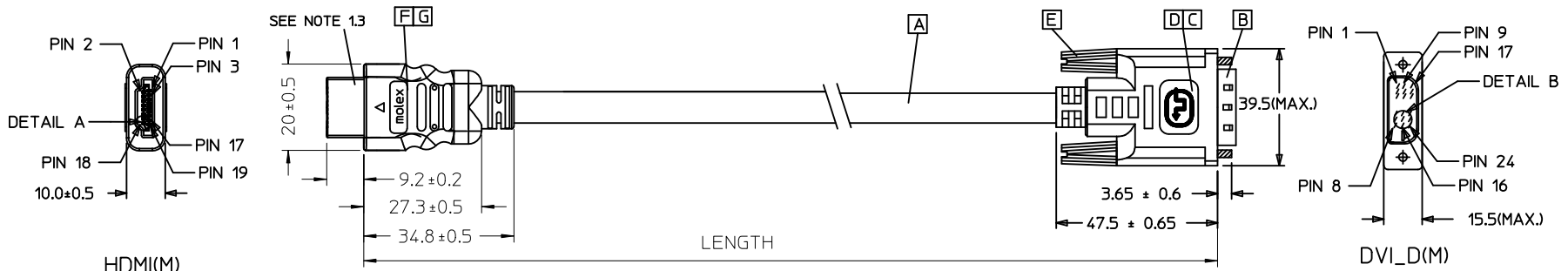
Tel: +86-755-8981 8866 Fax: +86-755-8427 6832

Email & Skype: info@chipsmall.com Web: www.chipsmall.com

Address: A1208, Overseas Decoration Building, #122 Zhenhua RD., Futian, Shenzhen, China



REVISIONS				
EC NO	DATE	REV	DESCRIPTION	CHANGER
CY11-6913	2011/06/30	B	UPDATE DESCRIPTION OF 687670031 CHANGE BOM ONLY FOR PN 687670031	JLIU13



MX P/N	DESCRIPTION	LENGTH	CABLE COLOR	CABLE OD
687670031	HDMI (M) TO DVI-D(M) 5M CABLE 28#AWG	5000 ± 100	BLACK	7.3MM(ITMDS - AWG#28)
687670030	HDMI TO DVI-D(M) GOLD 3M CABLE	3000 ± 50	BLACK	7.3MM(ITMDS - AWG#28)
687670029	HDMI TO DVI-D(M) GOLD 2M CABLE	2000 ± 30	BLACK	7.3MM(ITMDS - AWG#28)
687670028	HDMI TO DVI-D(M) GOLD 1M CABLE	1000 ± 30	BLACK	7.3MM(ITMDS - AWG#28)

ENTER DESCRIPTION EC NO: DG2012-0060 DRWN: FZHANG01 CHKD: JLIU13 APPR: ZXDENG	QUALITY SYMBOLS = 0 = 0	GENERAL TOLERANCES (UNLESS SPECIFIED)		DIMENSION STYLE MM ONLY		SCALE ---	DESIGN UNITS METRIC	THIRD ANGLE PROJECTION	
			mm	INCH	DRAWN BY FZHANG01	DATE 2011/05/06	TITLE HDMI(M) TO DVI-D(M) CABLE ASS'Y		
		4 PLACES	± ---	± ---	CHECKED BY JFZHENG	DATE 2011/05/06			
		3 PLACES	± ---	± ---	APPROVED BY ZXDENG	DATE 2011/07/22			
2 PLACES	± ---	± ---	MOLEX INCORPORATED						
1 PLACE	± ---	± ---	ANGULAR ± ---°		MATERIAL NO. 687670028/29/30/31	DOCUMENT NO. SD-68767-0028-0031	SHEET NO. 1 OF 2		
DRAFT WHERE APPLICABLE MUST REMAIN WITHIN DIMENSIONS			THIS DRAWING CONTAINS INFORMATION THAT IS PROPRIETARY TO MOLEX INCORPORATED AND SHOULD NOT BE USED WITHOUT WRITTEN PERMISSION						

- NOTE:
1. OVEMROLD SPECIFICATION:
 - 1.1 DVI BOOT MOLDED SNOW WHITE PVC RESIN ,UL94V-0.
 - 1.2 HDMI INNERMOLD WITH BK PVC
HDMI OVERMOLD WITH PVC
 - 1.3 HDMI DUST COVER WITH PE
 2. PRODUCT ELECTRICAL SPECIFICATION:

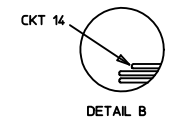
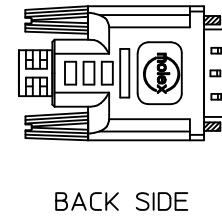
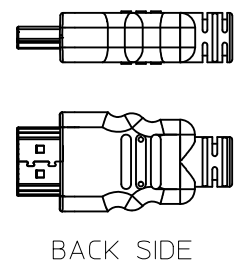
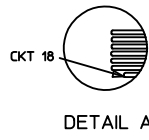
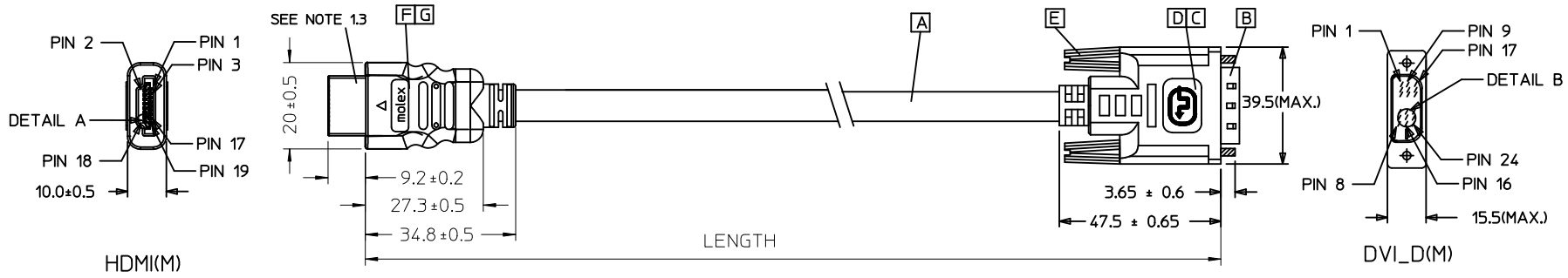
REFER TO HDMI ELECTRICAL SPECIFICATION FOR DETAILS.
 3. DVI CONNECTOR SPECIFICATION:
 - 3.1 REFER TO PRODUCT SPEC. PS74320-001
 - 3.2 CONTACT PLATING: AU FLASH.
 4. THIS PRODUCT MUST MEET THE EU RoHS CHEMICAL SUBSTANCES SPECIFICATION FOR PRODUCTS (EU 2002/95/EC).

SHIELD	SHIELD	OVERALL SHIELD	GROUND
PIN 19	PIN 16	WHITE	HOT PLUG DETECT
PIN 18	PIN 14	YELLOW	POWER +5V
PIN 17	PIN 15	ORANGE	GROUND(+5V&DDC)
PIN 16	PIN 7	RED	DDC DATA(SDA)
PIN 15	PIN 6	VIOLET	DDC CLOCK(SCL)
PIN 12	PIN 24	WHITE	TMDS CLOCK-
PIN 11	PIN 22	BRAID	TMDS CLOCK SHIELD
PIN 10	PIN 23	BROWN	TMDS CLOCK+
PIN 9	PIN 17	WHITE	TMDS DATA 0-
PIN 8	PIN 19	BRAID	TMDS DATA 0 SHIELD
PIN 7	PIN 18	BLUE	TMDS DATA 0+
PIN 6	PIN 9	WHITE	TMDS DATA 1-
PIN 5	PIN 11	BRAID	TMDS DATA 1 SHIELD
PIN 4	PIN 10	GREEN	TMDS DATA 1+
PIN 3	PIN 1	WHITE	TMDS DATA 2-
PIN 2	PIN 3	BRAID	TMDS DATA 2 SHIELD
PIN 1	PIN 2	RED	TMDS DATA 2+
HDMI	DVI-D	COLOR	CABLE FUNCTION

ITEM	DESCRIPTION	QTY.
G	Metal Shell For HDMI 19P Male (Only for 687670031)	1
	Metal Shell For HDMI 19P Male,Gold flash (Only for 687670028-30)	1
F	HDMI 19P MALE,30U"Au Solder Type	1
E	DVI THUMB SCREW GOLD PLATED.	2
D	PCB	1
C	ONE BODY CAN	1
B	DVI-D Au flash sub-Assy (Only for 687670031)	1
	DVI_D SINGLE CHANNEL G/F CONNECTOR (Only for 687670028-30)	1
A	(4P+1P+3C)28,SHLD,PVC,BK;7.30,UL20276DVI	1

ENTER DESCRIPTION EC NO: DG2012-0060 DRWN:FZHANG01 CHKD:JLU13 APPR:ZXDENG	2011/07/21 2011/07/21 2011/07/22	DESCRIPTION B	QUALITY SYMBOLS ▽=0 ▽=0	GENERAL TOLERANCES (UNLESS SPECIFIED)		DIMENSION STYLE MM ONLY		SCALE ---	DESIGN UNITS METRIC	THIRD ANGLE PROJECTION 	
					mm	INCH	DRAWN BY FZHANG01	DATE 2011/05/06	TITLE HDMI(M) TO DVI-D(M) CABLE ASS'Y		
				4 PLACES	± ---	± ---	CHECKED BY JFZHENG	DATE 2011/05/06			
				3 PLACES	± ---	± ---	APPROVED BY ZXDENG	DATE 2011/07/22			
2 PLACES	± ---	± ---	MATERIAL NO. 687670028/29/30/31								
1 PLACE	± ---	± ---	ANGULAR ±---°		DOCUMENT NO. SD-68767-0028-0031		SHEET NO. 2 OF 2				
DRAFT WHERE APPLICABLE MUST REMAIN WITHIN DIMENSIONS				SIZE A 4		THIS DRAWING CONTAINS INFORMATION THAT IS PROPRIETARY TO MOLEX INCORPORATED AND SHOULD NOT BE USED WITHOUT WRITTEN PERMISSION					

7 6 5 4 3 2 1



687670031	HDMI TO DVI-D(M) GOLD 5M CABLE	5000 ± 100	BLACK	7.3MM(TMDS - AWG#28)
687670030	HDMI TO DVI-D(M) GOLD 3M CABLE	3000 ± 50	BLACK	7.3MM(TMDS - AWG#28)
687670029	HDMI TO DVI-D(M) GOLD 2M CABLE	2000 ± 30	BLACK	7.3MM(TMDS - AWG#28)
687670028	HDMI TO DVI-D(M) GOLD 1M CABLE	1000 ± 30	BLACK	7.3MM(TMDS - AWG#28)
MX P/N	DESCRIPTION	LENGTH	CABLE COLOR	CABLE OD

ENTER DESCRIPTION EC NO: DG2011-0446 DRWN:FZHANG01 CHKD:PH ZHU APPR:ZXDENG 2011/05/06 2011/05/06 2011/05/11	QUALITY SYMBOLS ▽=0 ◻=0	GENERAL TOLERANCES (UNLESS SPECIFIED)		DIMENSION STYLE MM ONLY		SCALE ----	DESIGN UNITS METRIC	THIRD ANGLE PROJECTION	
			mm	INCH	DRAWN BY FZHANG01	DATE 2011/05/06	TITLE HDMI(M) TO DVI-D(M) CABLE ASS'Y		
		4 PLACES	±----	±----	CHECKED BY JFZHENG	DATE 2011/05/06	MOLEX INCORPORATED DOCUMENT NO. SD-68767-00XX SHEET NO. 1 OF 2		
		3 PLACES	±----	±----	APPROVED BY ZXDENG	DATE 2011/05/11			
		2 PLACES	±----	±----	ANGULAR ±----°		MATERIAL NO. 6876700XX		
1 PLACE	±----	±----	DRAFT WHERE APPLICABLE MUST REMAIN WITHIN DIMENSIONS		THIS DRAWING CONTAINS INFORMATION THAT IS PROPRIETARY TO MOLEX INCORPORATED AND SHOULD NOT BE USED WITHOUT WRITTEN PERMISSION				

6 5 4 3 2 1

7

6

5

4

3

2

1

NOTE:

1. OVERMOLD SPECIFICATION:

1.1 DVI BOOT MOLDED SNOW WHITE PVC RESIN

1.2 HDMI INNERMOLD WITH BK PVC

HDMI OVERMOLD WITH PVC

1.3 HDMI DUST COVER WITH PE

2. PRODUCT ELECTRICAL SPECIFICATION:

REFER TO HDMI SPECIFICATION

3. DVI CONNECTOR SPECIFICATION

3.1 REFER TO PRODUCT SPEC. PS74320-00


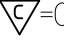
3.2 CONTACT PLATING: AU FLASH.

4. THIS PRODUCT MUST MEET THE EU RoHS CHEMICAL SUBSTANCES SPECIFICATION FOR PRODUCTS (EU 2002/95/EC).

SHIELD	SHIELD	OVERALL SHIELD	GROUND
PIN 19	PIN 16	WHITE	HOT PLUG DETECT
PIN 18	PIN 14	YELLOW	POWER +5V
PIN 17	PIN 15	ORANGE	GROUND(+5V&DDC)
PIN 16	PIN 7	RED	DDC DATA(SDA)
PIN 15	PIN 6	VIOLET	DDC CLOCK(SCL)
PIN 12	PIN 24	WHITE	TMDS CLOCK-
PIN 11	PIN 22	BRAID	TMDS CLOCK SHIELD
PIN 10	PIN 23	BROWN	TMDS CLOCK+
PIN 9	PIN 17	WHITE	TMDS DATA 0-
PIN 8	PIN 19	BRAID	TMDS DATA 0 SHIELD
PIN 7	PIN 18	BLUE	TMDS DATA 0+
PIN 6	PIN 9	WHITE	TMDS DATA 1-
PIN 5	PIN 11	BRAID	TMDS DATA 1 SHIELD
PIN 4	PIN 10	GREEN	TMDS DATA 1+
PIN 3	PIN 1	WHITE	TMDS DATA 2-
PIN 2	PIN 3	BRAID	TMDS DATA 2 SHIELD
PIN 1	PIN 2	RED	TMDS DATA 2+
HDMI	DVI-D	COLOR	CABLE FUNCTION

G	Metal Shell For HDMI 19P Male,Gold flash	1
F	HDMI 19P MALE,30U"Au Solder Type	1
E	DVI THUMB SCREW GOLD PLATED.	2
D	PCB	1
C	ONE BODY CAN	1
B	DVI_D SINGLE CHANNEL G/F CONNECTOR	1
A	(4P+1P+3C)28,SHLD,PVC,BK,7.30,UL20276DVI	1
ITEM	DESCRIPTION	QTY.

ENTER DESCRIPTION
 EC NO: DG2011-0446
 DRWN:FZHANG01 2011/05/06
 CHKD:PH ZHU 2011/05/06
 APPR:ZXDENG 2011/05/11

QUALITY SYMBOLS
 =0
 =0

GENERAL TOLERANCES (UNLESS SPECIFIED)

	mm	INCH
4 PLACES	± ---	± ---
3 PLACES	± ---	± ---
2 PLACES	± ---	± ---
1 PLACE	± ---	± ---
ANGULAR ± ---°		

DRAFT WHERE APPLICABLE
MUST REMAIN
WITHIN DIMENSIONS

DIMENSION STYLE
MM ONLY

DRAWN BY	DATE
FZHANG01	2011/05/06
CHECKED BY	DATE
JFZHENG	2011/05/06
APPROVED BY	DATE
ZXDENG	2011/05/11


MATERIAL NO.
6876700XX

SCALE

DESIGN UNITS
METRIC

THIRD ANGLE PROJECTION

TITLE
HDMI(M) TO DVI-D(M)
CABLE ASS'Y

 MOLEX INCORPORATED

DOCUMENT NO.
SD-68767-00XX

SHEET NO.
2 OF 2

THIS DRAWING CONTAINS INFORMATION THAT IS PROPRIETARY TO MOLEX INCORPORATED AND SHOULD NOT BE USED WITHOUT WRITTEN PERMISSION

6

5

4

3

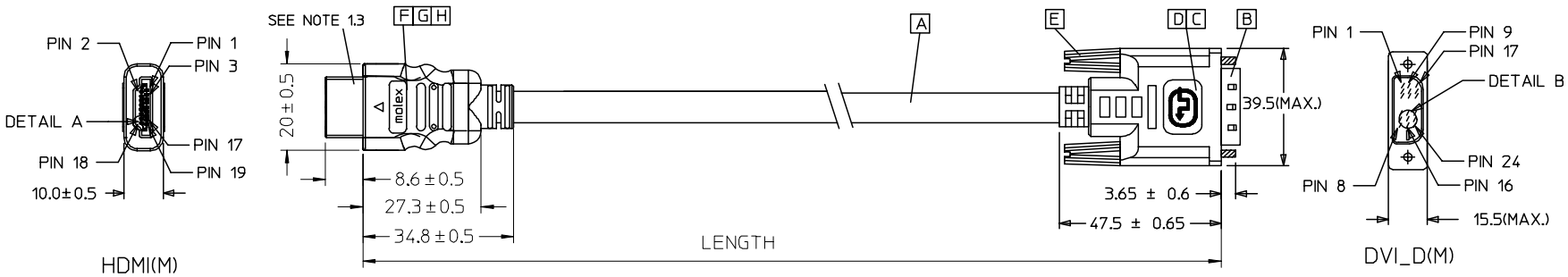
2

1

7 6 5 4 3 2 1

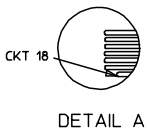
E

E

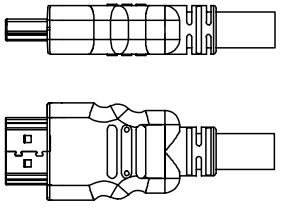


D

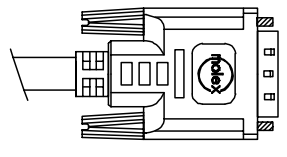
D



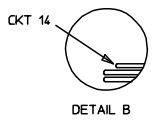
DETAIL A



BACK SIDE



BACK SIDE



DETAIL B

C

C

B

B

68767-0031	HDMI TO DVI-D(M) GOLD 5M CABLE	5000 ± 100	BLACK	7.3MM(TMDS - AWG#28)	887808276
68767-0030	HDMI TO DVI-D(M) GOLD 3M CABLE	3000 ± 50	BLACK	7.3MM(TMDS - AWG#28)	887808276
68767-0029	HDMI TO DVI-D(M) GOLD 2M CABLE	2000 ± 30	BLACK	7.3MM(TMDS - AWG#28)	887808276
68767-0028	HDMI TO DVI-D(M) GOLD 1M CABLE	1000 ± 30	BLACK	7.3MM(TMDS - AWG#28)	887808276
MX P/N	DESCRIPTION	LENGTH	CABLE COLOR	CABLE OD	CABLE P/N

A

A

Released EC NO: DG2007-0029 DRWN: JFZHENG 2006/09/08 CHKD: JFZHENG 2006/09/08 APPR: DQLUO 2006/09/11	QUALITY SYMBOLS ▽=0 ◻=0	GENERAL TOLERANCES (UNLESS SPECIFIED)		DIMENSION STYLE IN/MM		SCALE ---	DESIGN UNITS INCH	THIRD ANGLE PROJECTION	
		4 PLACES	± ---	± ---	DRAWN BY JFZHENG	DATE 2006/09/08	TITLE HDMI(M) TO DVI(M) GOLD CABLE 28#AWG		
		3 PLACES	± ---	± ---	CHECKED BY JFZHENG	DATE 2006/09/08	MOLEX INCORPORATED		
		2 PLACES	± ---	± ---	APPROVED BY DQLUO	DATE 2006/09/08	MATERIAL NO. 6876728/29/30/31		DOCUMENT NO. SD-68767-028
1 PLACE	± ---	± ---	ANGULAR ± ---°		DRAFT WHERE APPLICABLE MUST REMAIN WITHIN DIMENSIONS				

6

5

4

3

2

1

NOTE:

1. OVERMOLD SPECIFICATION:

- 1.1 DVI BOOT MOLDED SNOW WHITE PVC RESIN 887800076,UL94V-0.
- 1.2 HDMI INNERMOLD WITH BK PVC 887800019.
HDMI OVERMOLD WITH PVC 887800150.
- 1.3 HDMI DUST COVER WITH PE 887800008.

2. MECHANICAL SPECIFICATION:

- 2.1 CABLE SHOULD STAND THE PULL FORCE 89-111N FOR 30 SECONDS WITH NO VISIBLE TERMINATION DAMAGE.
- 2.2 CABLE SHOULD PASS THE FLEX TEST IN 100 CYCLES AT EACH OF PLANES, PER EIA 364-41, CONDITION 1.

3. PRODUCT ELECTRICAL SPECIFICATION:

- 3.1 DIELECTRIC STRENGTH.
- 3.2 INSULATION RESISTANCE.
- 3.3 CONDUCTIVE RESISTANCE.
- 3.4 TMDS Signals Time Domain Impedence
- 3.5 TMDS Signals Time Domain Crosstalk:FEXT
- 3.6 TMDS Signals Skew
- 3.7 Attenuation

REFER TO ES-002 ELECTRICAL SPECIFICATION FOR DETAILS.

4. DVI CONNECTOR SPECIFICATION:

- 4.1 REFER TO PRODUCT SPEC. PS74320-001.
- 4.2 CONTACT PLATING: AU FLASH.

5. THIS PRODUCT MUST MEET ROHS COMPLIANCE.

SHIELD	SHIELD	OVERALL SHIELD	GROUND
PIN 19	PIN 16	WHITE	HOT PLUG DETECT
PIN 18	PIN 14	YELLOW	POWER +5V
PIN 17	PIN 15	ORANGE	GROUND(+5V&DDC)
PIN 16	PIN 7	RED	DDC DATA(SDA)
PIN 15	PIN 6	VIOLET	DDC CLOCK(SCL)
PIN 12	PIN 24	WHITE	TMDS CLOCK-
PIN 11	PIN 22	BRAID	TMDS CLOCK SHIELD
PIN 10	PIN 23	BROWN	TMDS CLOCK+
PIN 9	PIN 17	WHITE	TMDS DATA 0-
PIN 8	PIN 19	BRAID	TMDS DATA 0 SHIELD
PIN 7	PIN 18	BLUE	TMDS DATA 0+
PIN 6	PIN 9	WHITE	TMDS DATA 1-
PIN 5	PIN 11	BRAID	TMDS DATA 1 SHIELD
PIN 4	PIN 10	GREEN	TMDS DATA 1+
PIN 3	PIN 1	WHITE	TMDS DATA 2-
PIN 2	PIN 3	BRAID	TMDS DATA 2 SHIELD
PIN 1	PIN 2	RED	TMDS DATA 2+
HDMI	DVI-D	COLOR	CABLE FUNCTION

ITEM	DESCRIPTION	QTY.
H	HDMI SMALL METAL PLATE 47152-6009	1
G	HDMI METAL CAN GOLD PLATED 47152-4002	1
F	HDMI HOUSING ASSY' BLACK 47152-1000	1
E	DVI THUMB SCREW GOLD PLATED. 172000522	2
D	PCB 887899569/887899570	1
C	ONE BODY CAN 887899392	1
B	DVI_D SINGLE CHANNEL G/F CONNECTOR 172000443	1
A	DVI SINGLE LINK CABLE 8878008276	1

Released EC NO: DG2007-0029 DRWN: JFZHENG 2006/09/08 CHKD: JFZHENG 2006/09/08 APPR: DQ LUO 2006/09/11	DESCRIPTION QUALITY SYMBOLS ▽=0 ▽=0	GENERAL TOLERANCES (UNLESS SPECIFIED)		DIMENSION STYLE MM ONLY		SCALE ---	DESIGN UNITS METRIC	THIRD ANGLE PROJECTION		
		4 PLACES	±---	±---	DRAWN BY	DATE	TITLE			
		3 PLACES	±---	±---	JFZHENG	2006/09/08	HDMI(M) TO DVI(M) GOLD CABLE 28AWG			
2 PLACES	±---	±---	CHECKED BY	DATE	MOLEX INCORPORATED					
1 PLACE	±---	±---	JF ZHENG	2006/09/08						
ANGULAR ±---°			APPROVED BY	DATE	MATERIAL NO.	DOCUMENT NO.	SHEET NO.			
DRAFT WHERE APPLICABLE MUST REMAIN WITHIN DIMENSIONS			DQ LUO	2006/09/08	68767-00-28/29/30	SD-68767-029	2 OF 2			
			SIZE	THIS DRAWING CONTAINS INFORMATION THAT IS PROPRIETARY TO MOLEX INCORPORATED AND SHOULD NOT BE USED WITHOUT WRITTEN PERMISSION						
			A 4							