



Chipsmall Limited consists of a professional team with an average of over 10 year of expertise in the distribution of electronic components. Based in Hongkong, we have already established firm and mutual-benefit business relationships with customers from,Europe,America and south Asia,supplying obsolete and hard-to-find components to meet their specific needs.

With the principle of “Quality Parts,Customers Priority,Honest Operation,and Considerate Service”,our business mainly focus on the distribution of electronic components. Line cards we deal with include Microchip,ALPS,ROHM,Xilinx,Pulse,ON,Everlight and Freescale. Main products comprise IC,Modules,Potentiometer,IC Socket,Relay,Connector.Our parts cover such applications as commercial,industrial, and automotives areas.

We are looking forward to setting up business relationship with you and hope to provide you with the best service and solution. Let us make a better world for our industry!



Contact us

Tel: +86-755-8981 8866 Fax: +86-755-8427 6832

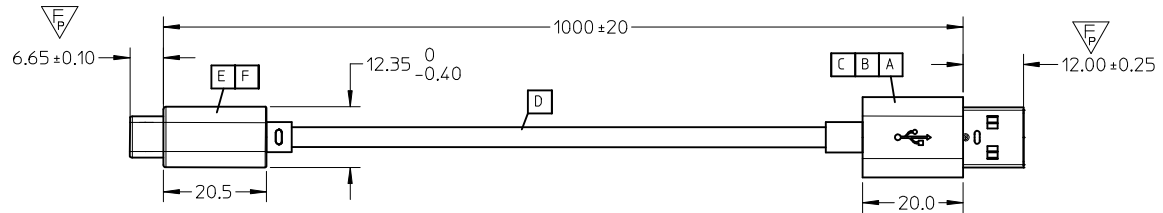
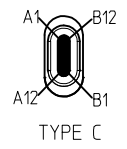
Email & Skype: info@chipsmall.com Web: www.chipsmall.com

Address: A1208, Overseas Decoration Building, #122 Zhenhua RD., Futian, Shenzhen, China

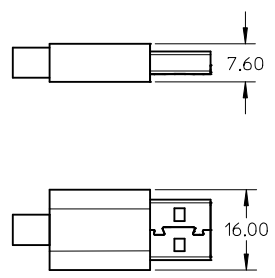
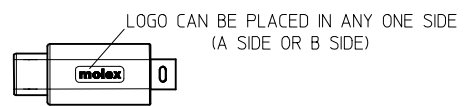
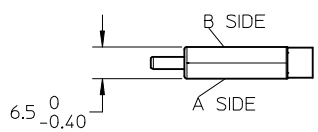


REVISIONS				
EC NO	DATE	REV	DESCRIPTION	CHANGER
CY16-5179	2016/03/19	C	UPDATE FLEXING TEST REQUIREMENT	LUCY
CY16-5923	2016/07/08	D	ADD MOLEX LOGO ON OUTER MOLD	LUCY
CY16-5857	2016/07/21	E	CHANGE PCBA	LUCY

P1



P2



PIN ASSIGNMENTS				
Type C	SIGNAL NAME	WIRE COLOR	USB 2.0	SIGNAL NAME
A1,B1,A12,B12	GND	BLACK	4	GND
A4,B4,A9,B9	VBUS	RED	1	VBUS
A5	CC	-	-	-
B5	VCONN	-	-	-
A6	Dp1	GREEN	3	D+
A7	Dn1	WHITE	2	D-
SHELL	SHIELD	BRAID	SHELL	SHIELD



F	extended tube back metal shell	1
E	Type C plug Au 30u" 22pin+PCBA 2.0	1
D	1PX28+3CX24AWG,SHLD,PVC,BK,4.2MM,UL2725	AR
C	USB2.0, plug, A type,bottom shell	1
B	USB2.0, plug, A type,top shell(7.9mm)	1
A	USB2.0, plug, A type plating 30u"	1
ITEM	DESCRIPTION	QTY.

ENTER DESCRIPTION EC NO: CPG2017-0113 DRW: XJGU001 CH: KD: LUCY APPR: FNIE 2016/07/22 2016/07/22 2016/07/25	QUALITY SYMBOLS $\nabla_F=0$ $\nabla_F=0$ $\nabla_F=2$	GENERAL TOLERANCES (UNLESS SPECIFIED) mm INCH 4 PLACES ± --- ± --- 3 PLACES ± --- ± --- 2 PLACES ± 0.25 ± --- 1 PLACE ± 0.5 ± --- 0 PLACE ± --- ± --- ANGULAR ± --- °	DIMENSION STYLE MM ONLY DRAWN BY: XJGU001 DATE: 2015/12/04 CHECKED BY: LUCY DATE: 2015/12/04 APPROVED BY: FNIE DATE: 2015/12/04 MATERIAL NO. 687980001	SCALE: --- DESIGN UNITS: METRIC THIRD ANGLE PROJECTION	TITLE: USB TYPE C TO USB 2.0 A MALE L=1M molex DOCUMENT NO. SD-68798-005 SHEET NO. 1 OF 2
	DRAFT WHERE APPLICABLE MUST REMAIN WITHIN DIMENSIONS				
	THIS DRAWING CONTAINS INFORMATION THAT IS PROPRIETARY TO MOLEX INCORPORATED AND SHOULD NOT BE USED WITHOUT WRITTEN PERMISSION				
	SIZE: A3				

NOTE:

1. OVERMOLDING SPECIFICATION:
 - 1.1 INNER MOLDING: PE RESIN
 - 1.2 OUTER MOLDING: PVC BLACK RESIN
2. APPLICATION CONDITION
 - 2.1 WORKING TEMPERATURE: -10°--- +50°
 - 2.2 STORAGE TEMPERATURE: -20°--- +60°
3. MECHANICAL PERFORMACNE
 - 3.1. CABLE ASSEMBLY CAN PASS FLEXING TEST, PER EIA364-41 CONDITION I WITH DIMENSION X=3.7 TIMES THE CABLE DIAMETER AND 100 CYCLES IN EACH OF TWO PLANES 120 DEGREE ARC.
 - 3.2. CABLE SHOULD WITHSTAND A PULL FORCE 40N FOR ONE MINUTE WITHOUT VISIBLE TERMINATION DAMAGE.PER EIA 364-38 METHOD A
 - 3.3 CABLE SHOULD MEET 3.8.1.6 4-AXIS CONTINUITY TEST OF TYPE C STANDARD FOR P1 SIDE
4. ELECTRICAL PERFORMACNE
 - 4.1 100% OPEN AND SHORT TEST
 - 4.2 OTHER ELECTRICAL PERFORMANCE MEET USB TYPE-C LEGACY CABLE, C - PLUG A, USB 2.0
 - 4.3 CURRENT RATING:3A, VOLTAGE DROP SHALL BE 250mV FOR GND AND 500mV FOR VBUS.
5. THIS PRODUCT MUST MEET Molex QEHS-699000-301
6. PRODUCT SPECIFICATION PS-68798-0003

ENTER DESCRIPTION EC NO: CPG2017-0113 DRWN:XJGU001 2016/07/22 CHKD:LUCY 2016/07/22 APPR:FNIE 2016/07/25	QUALITY SYMBOLS	GENERAL TOLERANCES (UNLESS SPECIFIED)		DIMENSION STYLE MM ONLY		SCALE ---	DESIGN UNITS METRIC	THIRD ANGLE PROJECTION		
	$\nabla_A=0$ $\nabla_G=0$ $\nabla_P=0$		mm	INCH	DRAWN BY	DATE	TITLE USB TYPE C TO USB 2.0 A MALE L=1M			
		4 PLACES	± ---	± ---	XJGU001	2015/12/04				
		3 PLACES	± ---	± ---	CHECKED BY	DATE				
		2 PLACES	± 0.25	± ---	LUCY	2015/12/04				
	1 PLACE	± 0.5	± ---	APPROVED BY	DATE	molex DOCUMENT NO. SD-68798-005 SHEET NO. 2 OF 2				
	0 PLACE	± ---	± ---	FNIE	2015/12/04					
	ANGULAR ± ---°		MATERIAL NO. 687980001							
	DRAFT WHERE APPLICABLE MUST REMAIN WITHIN DIMENSIONS		SIZE A3		THIS DRAWING CONTAINS INFORMATION THAT IS PROPRIETARY TO MOLEX INCORPORATED AND SHOULD NOT BE USED WITHOUT WRITTEN PERMISSION					