



Chipsmall Limited consists of a professional team with an average of over 10 year of expertise in the distribution of electronic components. Based in Hongkong, we have already established firm and mutual-benefit business relationships with customers from,Europe,America and south Asia,supplying obsolete and hard-to-find components to meet their specific needs.

With the principle of “Quality Parts,Customers Priority,Honest Operation,and Considerate Service”,our business mainly focus on the distribution of electronic components. Line cards we deal with include Microchip,ALPS,ROHM,Xilinx,Pulse,ON,Everlight and Freescale. Main products comprise IC,Modules,Potentiometer,IC Socket,Relay,Connector.Our parts cover such applications as commercial,industrial, and automotives areas.

We are looking forward to setting up business relationship with you and hope to provide you with the best service and solution. Let us make a better world for our industry!



Contact us

Tel: +86-755-8981 8866 Fax: +86-755-8427 6832

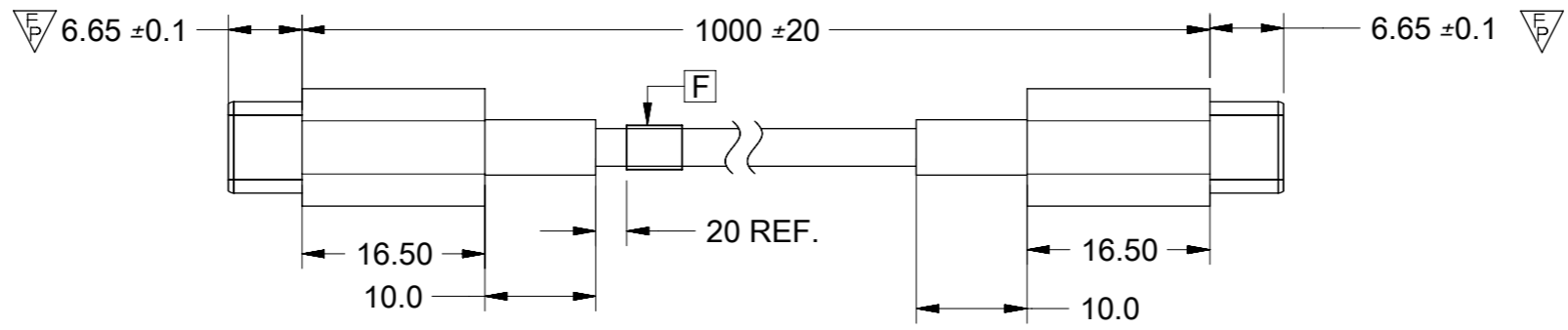
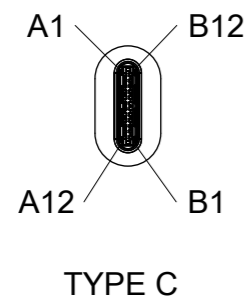
Email & Skype: info@chipsmall.com Web: www.chipsmall.com

Address: A1208, Overseas Decoration Building, #122 Zhenhua RD., Futian, Shenzhen, China

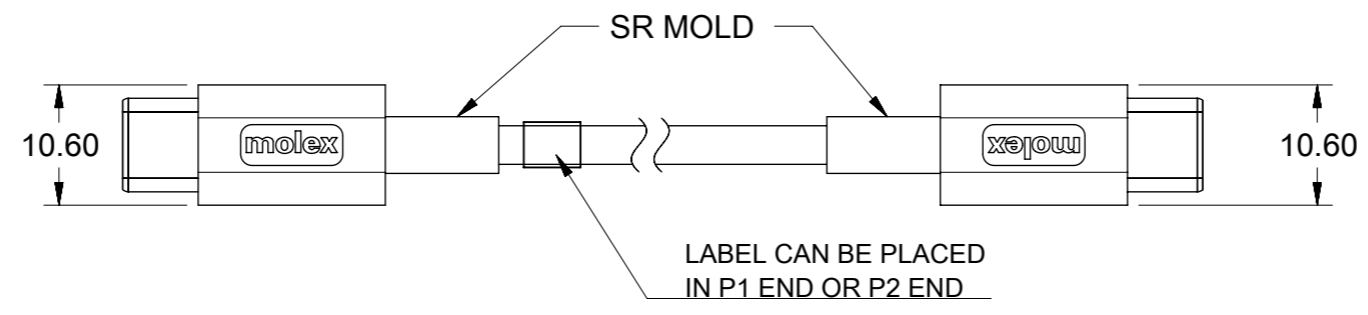
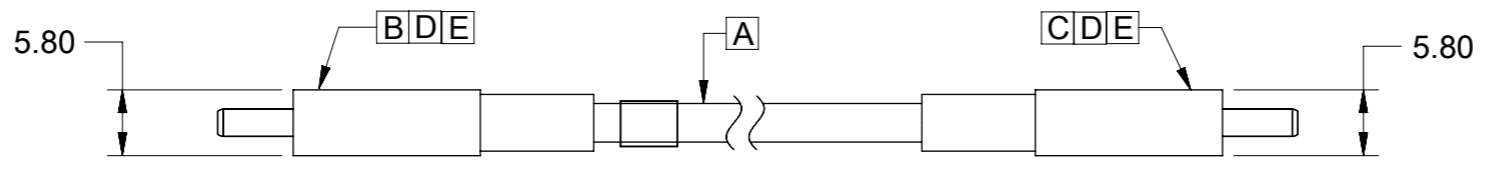
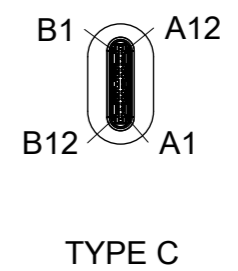


REVISIONS				
EC NO	DATE	REV	DESCRIPTION	CHANGER
NA	2017/12/13	A	INITIAL RELEASE	LUCY
CY18-5925	2018/07/25	B	CHANGE TYPE C PLUG AND RESIN	LUCY

P1



P2



F	LABEL	1
E	Right metal shell	2
D	Left metal shell	2
C	USB Type C 5A PCBA without E-Mark	1
B	USB Type C 5A PCBA with E-Mark	1
A	1Px32AWG+2Cx26AWG+2Cx32AWG,shielded,TPE,BLACK,OD3.40mm,UL21394	AR
ITEM	DESCRIPTION	QTY.

SYMBOLS THIS DRAWING CONTAINS INFORMATION THAT IS PROPRIETARY TO MOLEX ELECTRONIC TECHNOLOGIES, LLC AND SHOULD NOT BE USED WITHOUT WRITTEN PERMISSION DIMENSION UNITS: mm SCALE: 1.5:1 GENERAL TOLERANCES (UNLESS SPECIFIED): ANGULAR TOL ± 3.0° 4 PLACES ± 3 PLACES ± 2 PLACES ± 0.25 1 PLACE ± 0.5 0 PLACES ± DRAFT WHERE APPLICABLE MUST REMAIN WITHIN DIMENSIONS THIRD ANGLE PROJECTION DRAWING: A3-SIZE SERIES: 201241 MATERIAL NUMBER: 687980008 CUSTOMER: GENERAL MARKET SHEET NUMBER: 1 OF 2	CURRENT REV DESC: EC NO: 601987 DRWN: ZZXIAN 2018/07/25 CHK'D: LLI205 2018/07/26 APPR: LHUIU 2018/07/27 INITIAL REVISION: DRWN: XJGUO01 2016/09/01 APPR: FNIE 2018/01/03				
	USB 2.0 TYPE C TO C BLACK CABLE,L=1M,5A		PRODUCT CUSTOMER DRAWING		
	DOCUMENT NUMBER: 2012410159		DOC TYPE: PSD	DOC PART: 000	REVISION: B
	201241		687980008 GENERAL MARKET 1 OF 2		

NOTE:

1. OVERMOLDING SPECIFICATION:

△ B

- 1.1 INNER MOLDING: PE RESIN
- 1.2 SR MOLDING: TPE BLACK RESIN
- 1.3 OUTER MOLDING: TPE BLACK RESIN

2. APPLICATION CONDITION

- 2.1 WORKING TEMPERATURE: -10°--- +50°
- 2.2 STORAGE TEMPERATURE: -20°--- +60°

3. MECHANICAL PERFORMACNE

3.1.BENDING TEST:200G, +/-90°, 12~14CYCLES/MINUTES, R=25.4MM, HORIZONTAL FOR 500 CYCLES AND VERTICAL FOR 500 CYCLES, NO LESS THAN 1000 times/cycles*3 CYCLES=3000 TIMES

3.2. CABLE SHOULD WITHSTAND A PULL FORCE 40N FOR ONE MINUTE WITHOUT VISIBLE TERMINATION DAMAGE.PER EIA 364-38 METHOD A

4. ELECTRICAL PERFORMACNE

- 4.1 100% OPEN AND SHORT TEST
- 4.2 HIGH FREQUENCY ELECTRICAL PERFORMANCE MEET USB TYPE C - TYPE C, USB 2.0 REQUIREMENT.
- 4.3 CURRENT RATING:5A, VOLTAGE DROP SHALL BE 375mV FOR GND AND 625mV FOR VBUS.

5. THIS PRODUCT MUST MEET EU ROHS

6.LABEL REQUIREMENT

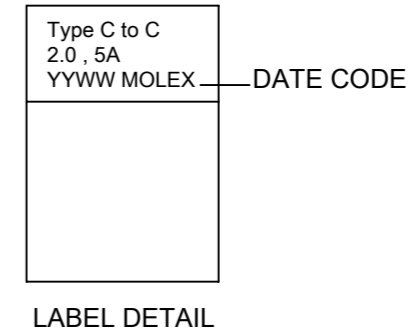
WHITE BLACKGROUND WITH BLACK TEXT

FONT: ARIAL; HEIGHT: 2mm REF;

LEFT ON HORIZONTAL

7.THIS PRODUCT NEED ESD PROTECTION

8.PRODUCT NEED INPUT E-MARKER INFORMATION



PIN ASSIGNMENTS				
Type C(P1)	SIGNAL NAME	WIRE COLOR	SIGNAL NAME	Type C(P2)
⊙A1,B1,A12,B12	GND	DRAIN	GND	⊙A1,B1,A12,B12
A4,B4,A9,B9	VBUS	VIOLET	VBUS	A4,B4,A9,B9
		VIOLET		
A5	CC	BLUE	CC	A5
B5	VCONN	BROWN	VCONN	B5
A6	Dp1	GREEN	Dp1	A6
A7	Dn1	WHITE	Dn1	A7
⊙SHELL	SHIELD	BRAID	SHIELD	⊙SHELL

E-MARKER

SYMBOLS	THIS DRAWING CONTAINS INFORMATION THAT IS PROPRIETARY TO MOLEX ELECTRONIC TECHNOLOGIES, LLC AND SHOULD NOT BE USED WITHOUT WRITTEN PERMISSION		molex					
	DIMENSION UNITS	SCALE				USB 2.0 TYPE C TO C BLACK CABLE,L=1M,5A		
	▽ = 0	mm	1:1	PRODUCT CUSTOMER DRAWING				
	▽ = 0	GENERAL TOLERANCES (UNLESS SPECIFIED)					DOCUMENT NUMBER	DOC TYPE
▽ = 0	ANGULAR TOL ± 3.0°		2012410159			PSD	000	B
▽ = 0	4 PLACES	±	CURRENT REV DESC:			INITIAL REVISION:		
▽ = 0	3 PLACES	±	EC NO: 601987			DRWN: XJGUO01		
▽ = 0	2 PLACES	± 0.25	DRWN: ZZXIAN 2018/07/25			DRWN: ZZXIAN 2018/07/25		
▽ = 0	1 PLACE	± 0.5	DRWN: LLI205 2018/07/26			DRWN: LLI205 2018/07/26		
▽ = 0	0 PLACES	±	APPR: LHLIU 2018/07/27			APPR: LHLIU 2018/07/27		
■ = 0	DRAFT WHERE APPLICABLE MUST REMAIN WITHIN DIMENSIONS		THIRD ANGLE PROJECTION	DRAWING	SERIES	MATERIAL NUMBER	CUSTOMER	SHEET NUMBER
▽ = 0				A3-SIZE	201241	687980008	GENERAL MARKET	2 OF 2