



Chipsmall Limited consists of a professional team with an average of over 10 year of expertise in the distribution of electronic components. Based in Hongkong, we have already established firm and mutual-benefit business relationships with customers from,Europe,America and south Asia,supplying obsolete and hard-to-find components to meet their specific needs.

With the principle of “Quality Parts,Customers Priority,Honest Operation,and Considerate Service”,our business mainly focus on the distribution of electronic components. Line cards we deal with include Microchip,ALPS,ROHM,Xilinx,Pulse,ON,Everlight and Freescale. Main products comprise IC,Modules,Potentiometer,IC Socket,Relay,Connector.Our parts cover such applications as commercial,industrial, and automotives areas.

We are looking forward to setting up business relationship with you and hope to provide you with the best service and solution. Let us make a better world for our industry!



Contact us

Tel: +86-755-8981 8866 Fax: +86-755-8427 6832

Email & Skype: info@chipsmall.com Web: www.chipsmall.com

Address: A1208, Overseas Decoration Building, #122 Zhenhua RD., Futian, Shenzhen, China



INTRODUCTIONS

1. Power module incorporates an IEC connector, a fuse holder with optional power on/off switch and voltage selector switch, plus an EMI filter all-in-one single, easy-to-install unit.
2. Fuse holder designed for one IEC 5x20mm fuse. Safety interlock prevents fuse removal with line plug inserted.
3. AE1/3/4/5: UL, CSA
AE2: UL, CSA, VDE

SPECIFICATIONS

1. Maximum leakage current each
line-to-ground @ 115VAC 60Hz: 0.25mA
@ 250VAC 50Hz: 0.45mA
2. Hipot rating (one minute)
line-to-ground: 2250VDC
line-to-line: 1450VDC
3. Operating frequency: 50/60Hz
4. Rated voltage: 115/250VAC

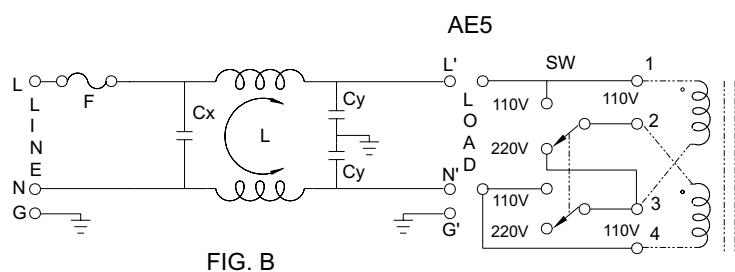
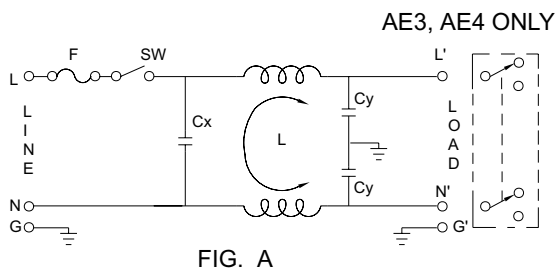
MINIMUM INSERTION LOSS IN dB

COMMON MODE (L-G) IN 50 OHM SYSTEM						
CURRENT RATING	FREQUENCY-MHz					
	.15	.50	1.0	5.0	10	30
3A	5	15	20	25	25	30
6A	10	20	22	35	38	45
10A	5	15	20	37	45	50

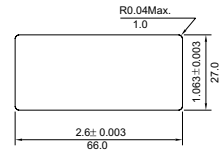
TYPE & RATED CURRENT

DELTA PART NO.	03AE1 06AE1 10AE1	03AE2 06AE2 10AE2	03AE3 06AE3	03AE4 06AE4	03AE5 06AE5
IEC CONNECTOR	△	△	△	△	△
FUSE HOLDER	△	△	△	△	△
POWER SWITCH	-	SP ¹	SP ¹	-	-
VOLTAGE SELECTOR SW	-	-	REAR ²	REAR ²	FRONT ³
ELECTRICAL SCHEMATIC	FIG. A	FIG. A	FIG. A	FIG. A	FIG. B

ELECTRICAL SCHEMATIC



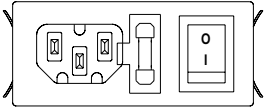
- AE1, AE4 without power SW
L1: 2.6mH (3A)
L1: 0.5mH (6A)
L1: 0.2mH (10A)
Cx: 0.015uF
Cy: 3300pF



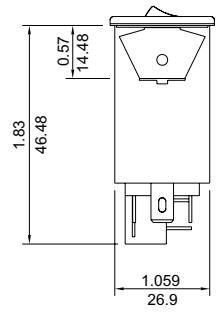
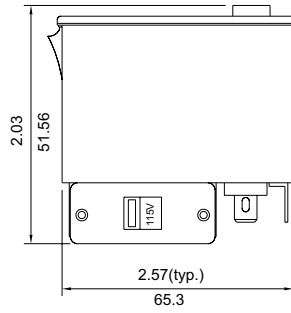
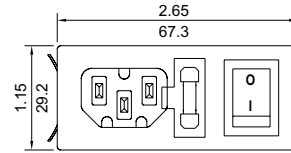
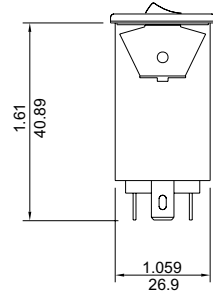
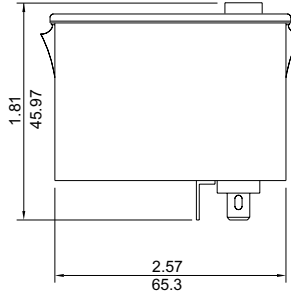
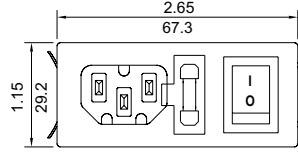
- Suggested thickness of mounting panel is from 0.04 to 0.07 inch
- Suggest mounting cutout

MECHANICAL CONSTRUCTION

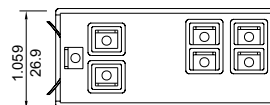
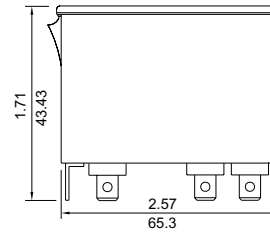
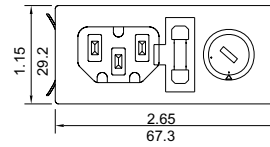
* Optional ON/OFF switch direction



AE1 (without power switch)
AE2



AE3
AE4 (without power switch)



AE5

UNIT: $\frac{\text{INCH}}{\text{mm}}$