



Chipsmall Limited consists of a professional team with an average of over 10 year of expertise in the distribution of electronic components. Based in Hongkong, we have already established firm and mutual-benefit business relationships with customers from,Europe,America and south Asia,supplying obsolete and hard-to-find components to meet their specific needs.

With the principle of “Quality Parts,Customers Priority,Honest Operation,and Considerate Service”,our business mainly focus on the distribution of electronic components. Line cards we deal with include Microchip,ALPS,ROHM,Xilinx,Pulse,ON,Everlight and Freescale. Main products comprise IC,Modules,Potentiometer,IC Socket,Relay,Connector.Our parts cover such applications as commercial,industrial, and automotives areas.

We are looking forward to setting up business relationship with you and hope to provide you with the best service and solution. Let us make a better world for our industry!



Contact us

Tel: +86-755-8981 8866 Fax: +86-755-8427 6832

Email & Skype: info@chipsmall.com Web: www.chipsmall.com

Address: A1208, Overseas Decoration Building, #122 Zhenhua RD., Futian, Shenzhen, China



INTRODUCTIONS

1. Applications for UL 544 & UL 2601 health care equipment.
2. Design as a general purpose filter providing effective EMI suppression.
3. All part numbers are UL recognized, CSA certified and VDE approved.

COMPONENTS

PART NO.	Cx (uF)	L1 (mH)	L2 (mH)	R (Ohm)
03DPCG5BM/W5BM	0.47	9.8	9.8	470K
06DPCG5BM/W5BM	1.0	7.8	7.8	220K
12DPCG5BM/W5BM		3.25	3.25	
16DPGG5BM/W5BM/S5BM		2.8	2.8	
03DPGG5CM/W5CM	0.22	2.5	2.5	1.0M
06DPCG5CM/W5CM	0.22	0.97	0.97	1.0M
12DPCG5CM/W5CM	0.47	0.58	0.58	470K
16DPCG5CM/W5CM/S5CM	0.33	0.65	0.65	1.0M
20DPCG5CM/S5CM/ 30DPGS5CM	1.0	0.60	0.60	220K

SERIES DIMENSIONS

CURRENT RATING	STYLE	DIMENSIONS IN INCHES/mm						
		A	B	C	D	E	F	G
3A	CG5CM, CW5CM	2.40	2.81	1.79	2.02	1.18	3.94	
		61.00	71.5	45.5	51.3		30.0	
6A	CG5CM, CW5CM	2.95	3.34	2.04	2.52	1.54	3.94	
				75.00	84.8		51.8	
12A	CG5CM, CW5CM	5.63	5.02	2.05	2.58	1.78	3.94	
				143.0	152.9		52.0	
16A	CG5CM, CW5CM, CS5CM	3.90	4.31	2.01	2.62	3.39	3.94	
				99.0	109.5		51.0	
20A	CG5CM, CS5CM	4.06	4.49	2.22	3.74	1.83	-	
				103.00	114.0		56.5	
30A	GS5CM	3.90	4.31	2.01	2.62	3.39	2.28	
				99.0	109.5		51.0	

SPECIFICATIONS

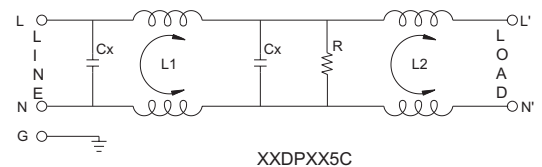
1. Maximum leakage current each line-to-ground @ 115VAC 60Hz: 2uA @ 250VAC 50Hz: 5uA
2. Hipot rating (one minute) line-to-ground: 2250VDC line-to-line: 1450VDC
3. Operating frequency: 50/60Hz
4. Rated voltage: 115/250VAC

MINIMUM INSERTION LOSS IN dB

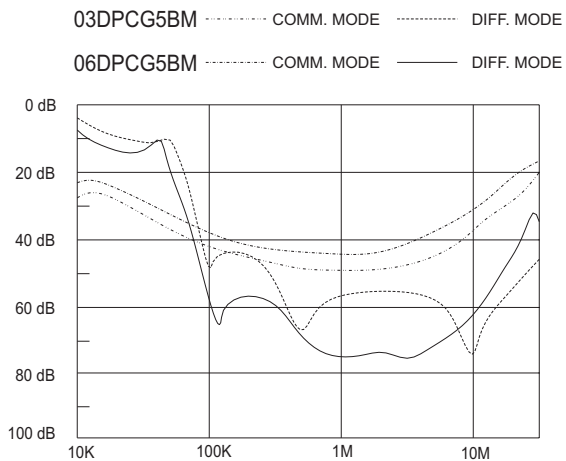
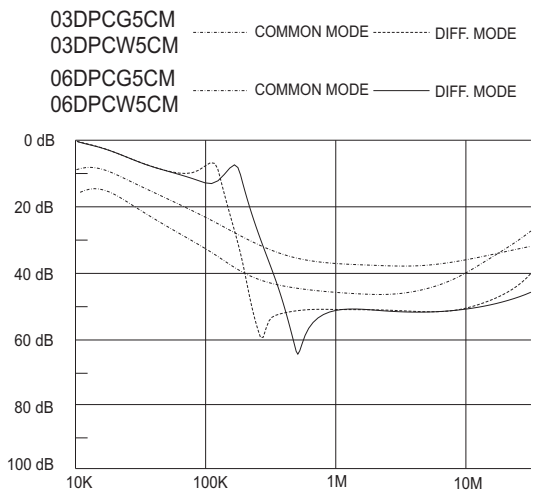
COMMON MODE (L-G) IN 50 OHM SYSTEM						
PART NUMBER	FREQUENCY-MHz					
	.15	.50	1.0	5.0	10	30
03DPCG5BM/W5BM	60	70	65	50	45	25
06DPCG5BM/W5BM	50	60	60	60	60	35
12DPCG5BM/W5BM	25	25	25	25	25	15
16DPGG5BM/W5BM/S5BM	20	35	40	50	40	30
03DPCG5CM/W5CM	25	35	35	35	30	20
06DPCG5CM/W5CM	20	25	25	25	25	20
12DPCG5CM/W5CM	10	15	15	15	15	10
16DPCG5CM/W5CM/S5CM	15	15	15	15	15	12
20DPCG5CM/S5CM/ 30DPGS5CM	10	25	15	15	10	8
30DPGS5CM	10	12	15	15	10	8

DIFFERENTIAL MODE (L-L) IN 50 OHM SYSTEM						
03DPCG5BM/W5BM	30	45	45	45	45	25
06DPCG5BM/W5BM	45	50	50	55	55	45
12DPCG5BM/W5BM	45	50	50	50	50	30
16DPGG5BM/W5BM/S5BM	7	55	50	50	50	40
03DPCG5CM/W5CM	10	40	40	40	40	30
06DPCG5CM/W5CM	8	45	40	40	40	35
12DPCG5CM/W5CM	12	35	35	30	30	25
16DPCG5CM/W5CM/S5CM	12	40	35	35	35	30
20DPCG5CM/S5CM/ 30DPGS5CM	15	40	40	35	30	20
30DPGS5CM	18	45	50	40	35	25

ELECTRICAL SCHEMATIC



INSERTION LOSS (TYPICAL)



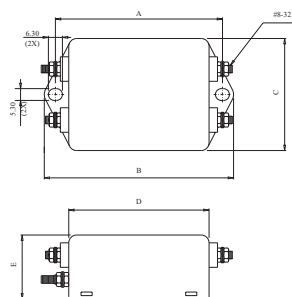
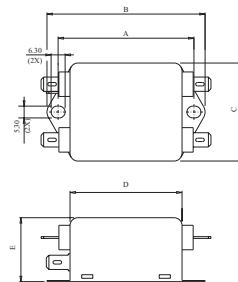
MECHANICAL CONSTRUCTION



CG5BM/CG5CM

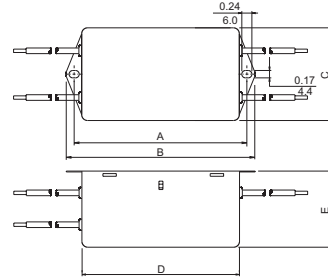


CS5CM



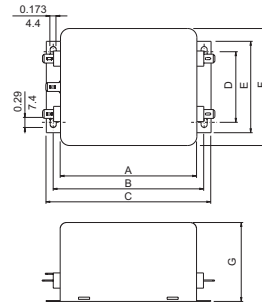
MECHANICAL CONSTRUCTION

CW5CM, CW5BM

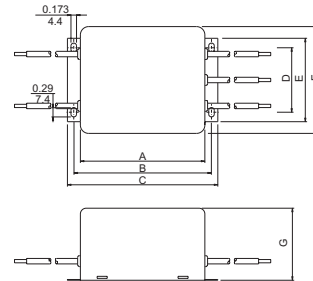


ALL WIRE LEADS 4.0" LONG MIN.

GG5BM



GW5BM



ALL WIRE LEADS 4.0" LONG MIN.

GS5BM/GS5CM

