



Chipsmall Limited consists of a professional team with an average of over 10 year of expertise in the distribution of electronic components. Based in Hongkong, we have already established firm and mutual-benefit business relationships with customers from,Europe,America and south Asia,supplying obsolete and hard-to-find components to meet their specific needs.

With the principle of “Quality Parts,Customers Priority,Honest Operation,and Considerate Service”,our business mainly focus on the distribution of electronic components. Line cards we deal with include Microchip,ALPS,ROHM,Xilinx,Pulse,ON,Everlight and Freescale. Main products comprise IC,Modules,Potentiometer,IC Socket,Relay,Connector.Our parts cover such applications as commercial,industrial, and automotives areas.

We are looking forward to setting up business relationship with you and hope to provide you with the best service and solution. Let us make a better world for our industry!



Contact us

Tel: +86-755-8981 8866 Fax: +86-755-8427 6832

Email & Skype: info@chipsmall.com Web: www.chipsmall.com

Address: A1208, Overseas Decoration Building, #122 Zhenhua RD., Futian, Shenzhen, China



PREO Power Line EMI Filters

A Division of Eastek International Corporation

Series ER

High Performance
Two-Stage



UL Recognized
CSA Certified
VDE Approved

Introduction

The ER series are high performance EMI filters with multi-stage design for both common mode and differential mode noise suppression. This series is most useful when attenuation is required for compliance with stringent EMI emission regulations such as FCC-B and VDE-B. Available in wide range of current ratings and terminal styles.

Minimum Insertion Loss in dB

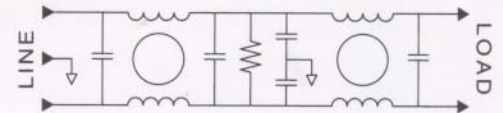
Common mode (line to ground) in 50 ohm system:

MODEL	Frequency in MHz								
	0.02	0.05	0.10	0.15	0.50	1.0	5.0	10	30
02ER11/33	12	7	13	40	65	65	65	65	60
03ER11/33/M1	14	7	15	40	65	65	65	65	60
06ER11/33/M1	10	7	10	30	55	65	65	65	60
10ER11/33/66/M1		5	5	5	40	52	60	60	50
20ER11/66		5	5	5	40	52	60	60	50
30ER66		7	5	10	45	55	60	60	50

Differential mode (line to line) in 50 ohm system:

MODEL	Frequency in MHz								
	0.05	0.10	0.15	0.50	1.0	3.0	5.0	10	30
02ER11/33	8	5	5	45	70	65	65	60	50
03ER11/33/M1	6	5	12	55	70	65	65	60	50
06ER11/33/M1	8	5	5	40	70	65	65	60	50
10ER11/33/66/M1	10	12	5	12	50	65	65	60	55
20ER11/66	10	12	5	12	50	65	65	60	55
30ER66	20	15	15	65	65	65	65	60	55

Schematic



Electrical ratings

Maximum operating voltage: 250 VAC

Operating frequency: 50/60 Hz

Hipot rating (one minute):

Line to Ground: 1500 VAC
Line to Line: 1450 VDC

Maximum leakage current (each line to ground):

@ 120 VAC / 60 Hz: 0.25 mA
@ 250 VAC / 50 Hz: 0.45 mA

Rated current at 40°C ambient temperature:

02ER11, 02ER33 2 A
03ER11, 03ER33, 03ERM1 3 A
06ER11, 06ER33, 06ERM1 6 A
10ER11, 10ER33, 10ER66, 10ERM1 10 A
20ER11, 20ER66 20 A
30ER66 30 A

Now in Stock at

EASTEK INTERNATIONAL CORPORATION

114 Joey Drive, Elk Grove, IL 60007, USA
Phone: 847 437 2800 Fax: 847 437 2809

or your local agent