



Chipsmall Limited consists of a professional team with an average of over 10 year of expertise in the distribution of electronic components. Based in Hongkong, we have already established firm and mutual-benefit business relationships with customers from,Europe,America and south Asia,supplying obsolete and hard-to-find components to meet their specific needs.

With the principle of “Quality Parts,Customers Priority,Honest Operation,and Considerate Service”,our business mainly focus on the distribution of electronic components. Line cards we deal with include Microchip,ALPS,ROHM,Xilinx,Pulse,ON,Everlight and Freescale. Main products comprise IC,Modules,Potentiometer,IC Socket,Relay,Connector.Our parts cover such applications as commercial,industrial, and automotives areas.

We are looking forward to setting up business relationship with you and hope to provide you with the best service and solution. Let us make a better world for our industry!



Contact us

Tel: +86-755-8981 8866 Fax: +86-755-8427 6832

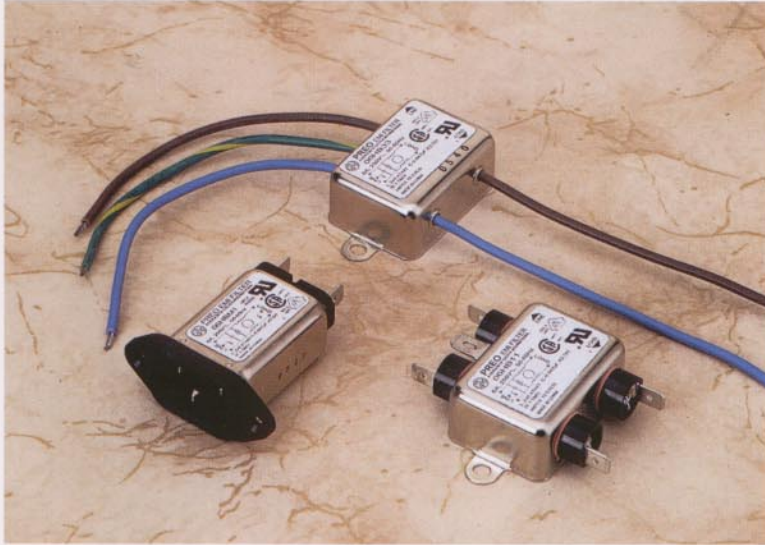
Email & Skype: info@chipsmall.com Web: www.chipsmall.com

Address: A1208, Overseas Decoration Building, #122 Zhenhua RD., Futian, Shenzhen, China



PREO Power Line EMI Filters

A Division of Eastek International Corporation



Series HB

For UL544 and IEC601
Health Care Equipment



UL Recognized
CSA Certified
VDE Approved

Introduction

The HB series are general purpose EMI filters specially designed for medical and dental equipment, both patient care and nonpatient categories. The leakage current in this series is extremely low to satisfy the stringent leakage current limit imposed by safety regulations for medical and dental equipment, such as UL544 and IEC601.

Minimum Insertion Loss in dB

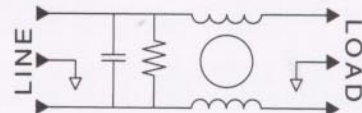
Common mode (line to ground) in 50 ohm system:

MODEL	Frequency in MHz							
	0.05	0.10	0.15	0.50	1.0	5.0	10	30
06HB11/33/M1	3	7	11	20	22	24	22	18

Differential mode (line to line) in 50 ohm system:

MODEL	Frequency in MHz							
	0.10	0.15	0.50	1.0	3.0	5.0	10	30
06HB11/33/M1	3	6	14	20	30	35	35	35

Schematic



Electrical ratings

Maximum operating voltage:	250 VAC
Operating frequency:	50/60 Hz
Hipot rating (one minute):	
Line to Ground:	1500 VAC
Line to Line:	1450 VDC
Maximum leakage current (each line to ground):	
@ 120 VAC / 60 Hz:	2 μ A
@ 250 VAC / 50 Hz:	5 μ A
Rated current at 40°C ambient temperature:	
06HB11, 06HB33, 06HBM1	6 A

Now in Stock at

EASTEK INTERNATIONAL CORPORATION

114 Joey Drive, Elk Grove, IL 60007, USA
Phone: 847 437 2800 Fax: 847 437 2809

or your local agent