



Chipsmall Limited consists of a professional team with an average of over 10 year of expertise in the distribution of electronic components. Based in Hongkong, we have already established firm and mutual-benefit business relationships with customers from,Europe,America and south Asia,supplying obsolete and hard-to-find components to meet their specific needs.

With the principle of “Quality Parts,Customers Priority,Honest Operation,and Considerate Service”,our business mainly focus on the distribution of electronic components. Line cards we deal with include Microchip,ALPS,ROHM,Xilinx,Pulse,ON,Everlight and Freescale. Main products comprise IC,Modules,Potentiometer,IC Socket,Relay,Connector.Our parts cover such applications as commercial,industrial, and automotives areas.

We are looking forward to setting up business relationship with you and hope to provide you with the best service and solution. Let us make a better world for our industry!



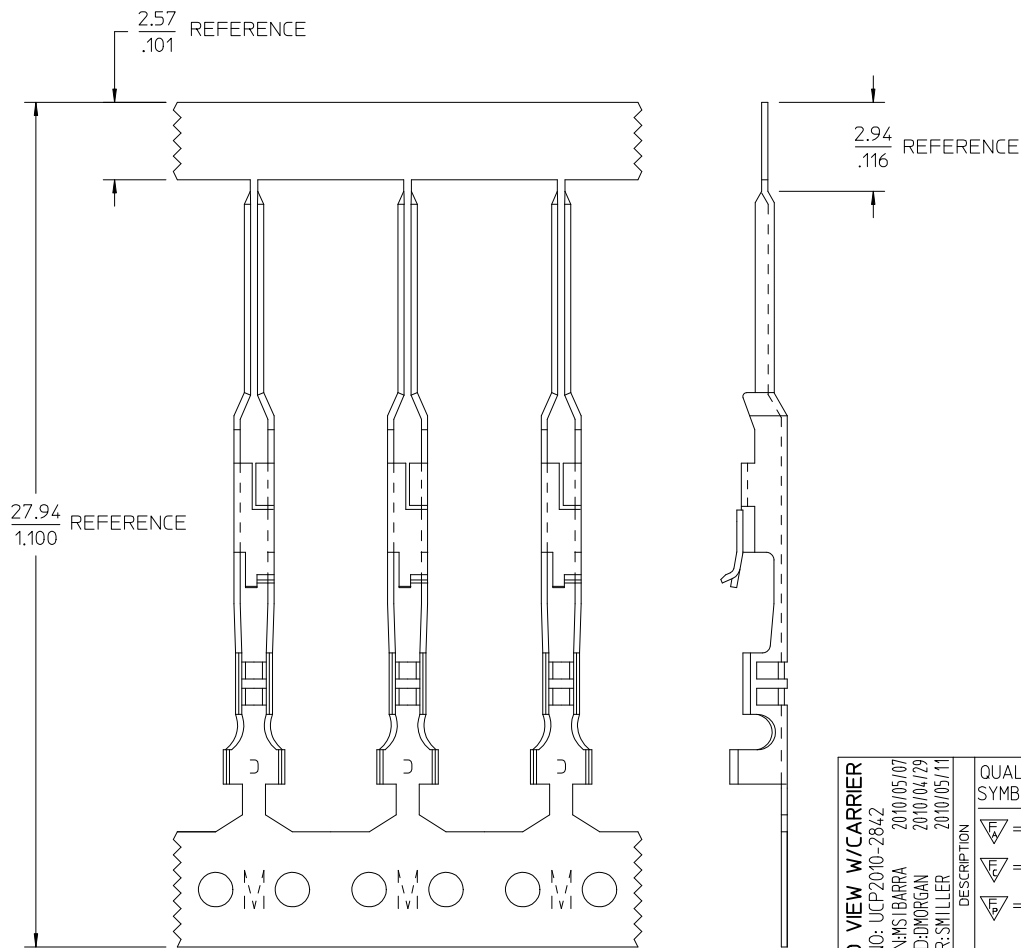
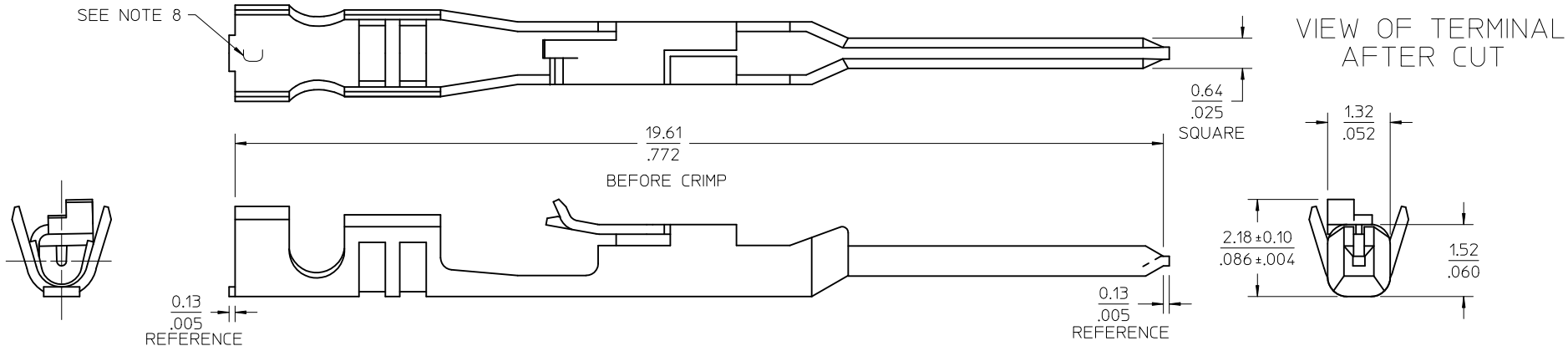
Contact us

Tel: +86-755-8981 8866 Fax: +86-755-8427 6832

Email & Skype: info@chipsmall.com Web: www.chipsmall.com

Address: A1208, Overseas Decoration Building, #122 Zhenhua RD., Futian, Shenzhen, China





NOTES:

1. MATERIAL: PHOSPHOR BRONZE, 0.20/0.008 THICK
2. FINISH: 3.81 MICROMETERS/150 MICROINCHES TIN OVER
NICKEL UNDERPLATE OVERALL
3. PRODUCT SPECIFICATION: PS-70021
4. PACKAGING: PARTS SUPPLIED IN REEL FORM
5. TERMINAL FOR USE WITH: 70066-**** & 70107-**** HOUSINGS
6. TERMINAL TO BE USED WITH: 22-24 AWG STRANDED WIRE WITH
.064 DIAMETER MAXIMUM INSULATION
7. REFER TO MOLEX OPERATIONAL AND SERVICE MANUAL FOR DETAILS
8. CRIMP SIZE INDICATOR: C=22-24 AWG

ADD VIEW W/CARRIER EC NO: UCP2010-2842 DRAWN: MSIBARRA 2010/05/07 CHKD: DMORGAN 2010/04/29 APPR: SMILLER 2010/05/11	DESCRIPTION	QUALITY SYMBOLS <div>▽=0</div> <div>▽=0</div> <div>▽=0</div>	GENERAL TOLERANCES (UNLESS SPECIFIED)			DIMENSION STYLE MM/IN		SCALE 15:1	DESIGN UNITS INCH	THIRD ANGLE PROJECTION			
				mm	INCH	DRAWN BY MSIBARRA	DATE 2010/04/29	TITLE TERMINAL, MALE CRIMP					
			4 PLACES	± ---	± ---	CHECKED BY DMORGAN	DATE 2010/04/29	MOLEX MOLEX INCORPORATED					
			3 PLACES	± ---	± .010								
			2 PLACES	± 0.25	± .015	APPROVED BY SMILLER		DATE 2010/05/11					
			1 PLACE	± 0.35	± ---								
B	REV		ANGULAR ±1/2°			MATERIAL NO. 70021-1021		DOCUMENT NO. SD-70021-1021		SHEET NO. 1 OF 1			
			DRAFT WHERE APPLICABLE MUST REMAIN WITHIN DIMENSIONS			SIZE C	THIS DRAWING CONTAINS INFORMATION THAT IS PROPRIETARY TO MOLEX INCORPORATED AND SHOULD NOT BE USED WITHOUT WRITTEN PERMISSION						