



Chipsmall Limited consists of a professional team with an average of over 10 year of expertise in the distribution of electronic components. Based in Hongkong, we have already established firm and mutual-benefit business relationships with customers from,Europe,America and south Asia,supplying obsolete and hard-to-find components to meet their specific needs.

With the principle of “Quality Parts,Customers Priority,Honest Operation,and Considerate Service”,our business mainly focus on the distribution of electronic components. Line cards we deal with include Microchip,ALPS,ROHM,Xilinx,Pulse,ON,Everlight and Freescale. Main products comprise IC,Modules,Potentiometer,IC Socket,Relay,Connector.Our parts cover such applications as commercial,industrial, and automotives areas.

We are looking forward to setting up business relationship with you and hope to provide you with the best service and solution. Let us make a better world for our industry!



## Contact us

Tel: +86-755-8981 8866 Fax: +86-755-8427 6832

Email & Skype: info@chipsmall.com Web: www.chipsmall.com

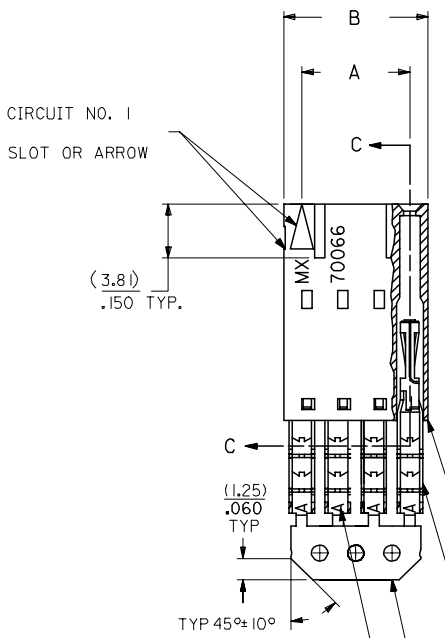
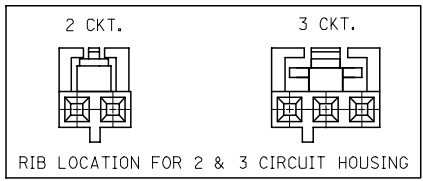
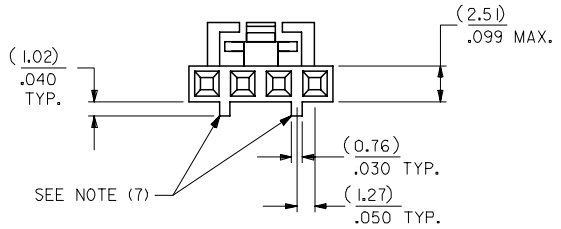
Address: A1208, Overseas Decoration Building, #122 Zhenhua RD., Futian, Shenzhen, China



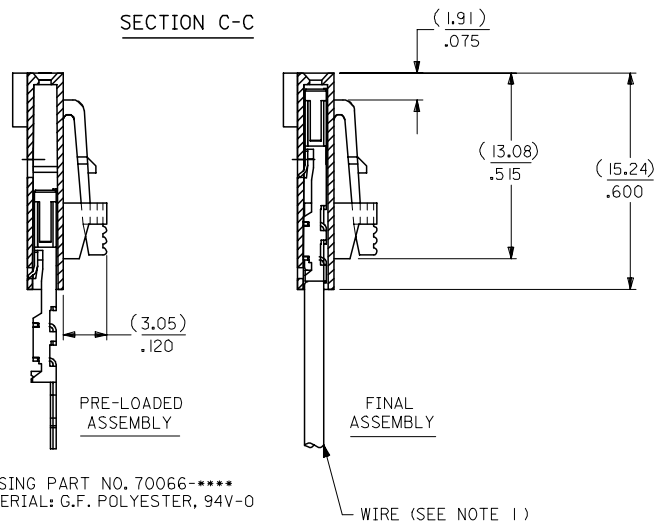
# OPTION G

## NOTES:

- 1) TO BE USED WITH (24) AWG. STRANDED WIRE WITH (1.35)/.053 DIA. MAX. INSULATION.
- 2) SEE CHART FOR CIRCUIT SIZES.
- 3) STANDARD PACKAGING PER PK-70873-0001. OPTIONAL PACKAGING MAY BE AVAILABLE, REQUEST DWG. PK-70400
- 4) PARTS STACKABLE END TO END ON (2.54)/.100 CENTERS.
- 5) REFER TO PRODUCT SPECIFICATION: PS-70400.
- 6) SEE DWG. SDA-70400-\*\*\*\* (SHT. 5) FOR OPTIONAL HOUSING DETAILS.
- 7) 4 CIRCUIT SHOWN. 4 - 25 CKT'S. HAVE (2) RIBS.
- 8) TO MATE WITH MOLEX PART NO.'S.: A-70373-\*\*\*\*, A-70375-\*\*\*\*, A-70389-\*\*\*\*, A-70391-\*\*\*\*, 70107-\*\*\*\*, 70018-\*\*\*\*, A-70543-\*\*\*\*, A-70553-\*\*\*\*, A-70541-\*\*\*\*, A-70551-\*\*\*\*, A-70545-\*\*\*\*, A-70555-\*\*\*\*.
- 9) 2 CIRCUIT ASSEMBLIES SUPPLIED AS GROUPED PAIRS.



### SECTION C-C



I.D. SLOT CODE TO WIRE GAUGE CHART	
I.D. SLOT CODE	WIRE GAUGE
A	24 AWG.

PLATING CODE (STRIPE ON CARRIER STRIP)	
PLATING	COLOR
15 GOLD	YELLOW

15 GOLD - .000015 MIN. GOLD IN SELECT AREA WITH .000075 MIN. TIN IN SELECT AREA OVER .000050 MIN. NICKEL OVER-ALL.

HOUSING PART NO. 70066-\*\*\*\*  
MATERIAL: G.F. POLYESTER, 94V-0

TERMINAL PART NO. 70028-\*\*\*\*  
MATERIAL: PHOSPHOR BRONZE  
PLATING PER ES-88-\*\*\*

CKT. SIZE	A	B	ITEM NUMBER
2	( 2.54 ) .100	( 5.05 ) .199	70400-2022
3	( 5.08 ) .200	( 7.59 ) .299	70400-2032
4	( 7.62 ) .300	( 10.13 ) .399	70400-2042
5	( 10.16 ) .400	( 12.67 ) .499	70400-2052
6	( 12.70 ) .500	( 15.21 ) .599	70400-2062
7	( 15.24 ) .600	( 17.75 ) .699	70400-2072
8	( 17.78 ) .700	( 20.29 ) .799	70400-2082
9	( 20.32 ) .800	( 22.83 ) .899	70400-2092
10	( 22.86 ) .900	( 25.37 ) .999	70400-2102
11	( 25.54 ) 1.000	( 27.91 ) 1.099	70400-2112
12	( 27.94 ) 1.100	( 30.45 ) 1.199	70400-2122
13	( 30.48 ) 1.200	( 32.99 ) 1.299	70400-2132
14	( 33.02 ) 1.300	( 35.53 ) 1.399	70400-2142
15	( 35.56 ) 1.400	( 38.07 ) 1.499	70400-2152
16	( 38.01 ) 1.500	( 40.61 ) 1.599	70400-2162
17	( 40.64 ) 1.600	( 43.15 ) 1.699	
18	( 43.18 ) 1.700	( 45.69 ) 1.799	70400-2182
19	( 45.72 ) 1.800	( 48.23 ) 1.899	
20	( 48.26 ) 1.900	( 50.77 ) 1.999	70400-2202
21	( 50.80 ) 2.000	( 53.31 ) 2.099	
22	( 53.34 ) 2.100	( 55.85 ) 2.199	70400-2222
23	( 55.88 ) 2.200	( 58.39 ) 2.299	
24	( 58.42 ) 2.300	( 60.93 ) 2.399	70400-2242
25	( 60.96 ) 2.400	( 63.47 ) 2.499	

INITIAL RELEASE FC NO: UCP2006-0364 DRAWN BY: 2005/12/12 CHKD: BBARKER 2005/12/19 APPR: SMILLER 2005/12/19	DESCRIPTION	QUALITY SYMBOLS ▽=0 ▽=0
--	-------------	-------------------------------

GENERAL TOLERANCES (UNLESS SPECIFIED)	
	MM/INCH
4 PLACES	± .010
3 PLACES	± .014
2 PLACES	± .018
1 PLACE	± .025
ANGULAR ±1/2°	

DIMENSION STYLE		SCALE		DESIGN UNITS		THIRD ANGLE PROJECTION	
MM/IN	DATE	4:1	INCH				
DRAWN BY: MIBARRA	2005/10/27						
CHECKED BY: BBARKER	2005/10/27						
APPROVED BY: SMILLER	2005/10/27						

MATERIAL NO.		DOCUMENT NO.		SHEET NO.	
SEE TABLE		SD-70400-005		1 OF 1	
THIS DRAWING CONTAINS INFORMATION THAT IS PROPRIETARY TO MOLEX INCORPORATED AND SHOULD NOT BE USED WITHOUT WRITTEN PERMISSION					

ASSEMBLY SL CONNECTOR  
SINGLE ROW (2.54)/.100  
GRID

MOLEX MOLEX INCORPORATED