



Chipsmall Limited consists of a professional team with an average of over 10 year of expertise in the distribution of electronic components. Based in Hongkong, we have already established firm and mutual-benefit business relationships with customers from,Europe,America and south Asia,supplying obsolete and hard-to-find components to meet their specific needs.

With the principle of “Quality Parts,Customers Priority,Honest Operation,and Considerate Service”,our business mainly focus on the distribution of electronic components. Line cards we deal with include Microchip,ALPS,ROHM,Xilinx,Pulse,ON,Everlight and Freescale. Main products comprise IC,Modules,Potentiometer,IC Socket,Relay,Connector.Our parts cover such applications as commercial,industrial, and automotives areas.

We are looking forward to setting up business relationship with you and hope to provide you with the best service and solution. Let us make a better world for our industry!



Contact us

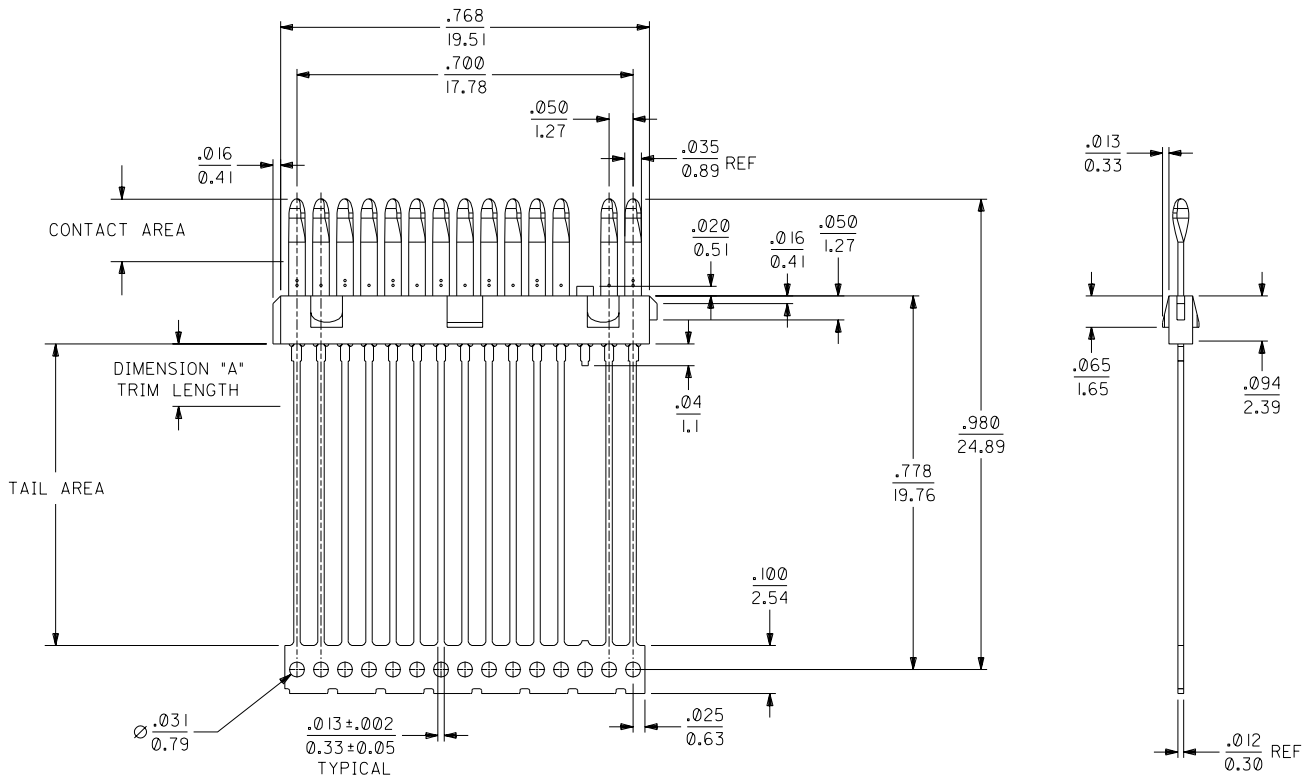
Tel: +86-755-8981 8866 Fax: +86-755-8427 6832

Email & Skype: info@chipsmall.com Web: www.chipsmall.com

Address: A1208, Overseas Decoration Building, #122 Zhenhua RD., Futian, Shenzhen, China



13	12	11	10	9	8	7	6	5	4	3	2	70984
ITEM NUMBER	CARRIER	TRIMMED	DIMENSION "A"	PLATING								
				CONTACT AREA	TAIL AREA							
70984-1098	YES	NO	N/A	GOLD FLASH OVER A NICKEL UNDERPLATE								
70984-1099	NO	YES	.130±.010	GOLD FLASH OVER A NICKEL UNDERPLATE								

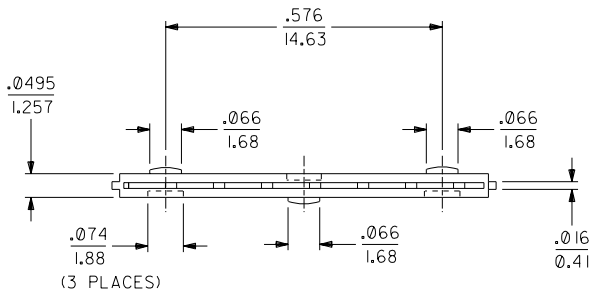


NOTES

- 1) MATERIALS:
INSULATOR: GLASS FILLED LCP (LIQUID CRYSTAL POLYMER),
UL 94V-0, COLOR: BLACK.
TERMINAL: PHOSPHOR BRONZE, .012/0.30 THICK.
PLATING: SEE CHART
- 2) FOR PART NUMBERS AND PLATING OPTIONS, SEE CHART.
- 3) PARTS CONFORM TO PRODUCT SPECIFICATION PS-75134-001.
- 4) PACKAGED PER SPECIFICATION PK-70873-0335 APPLIES.

NOTE FOR LEAD FREE CONVERSION:

THE PRIMARY SHIPPING CARTON WILL BE LABELED "COMPLIANT TO ROHS DIRECTIVE 2002/95/EC AND ELV ANNEX II OF DIRECTIVE 2000/53/EC". CARTONS WITHOUT THIS LABEL MAY CONTAIN PRODUCT WITH LEAD.



LEADFREE EC NO. UCP2004-1998 DRAWN: DMORGAN 04/04/14 CHK: BBARKER 04/04/14 APPR: SMILLER 04/04/14	QUALITY SYMBOLS MAJOR = CRITICAL =	GENERAL TOLERANCES: (UNLESS SPECIFIED)		SCALE 5:1	DESIGN UNITS <input type="checkbox"/> mm <input checked="" type="checkbox"/> INCH	THIRD ANGLE PROJECTION <input type="checkbox"/> mm ONLY <input checked="" type="checkbox"/> INCH	DIMENSIONS: <input type="checkbox"/> mm <input checked="" type="checkbox"/> INCH	SHT	REV	
		4 PLACES ±0.	±.	DRAWN BY & DATE DMORGAN 02/10/17	TITLE: SALES 14 CKT DMS-59 PLUG INSERT MOLDED CONTACT ASSEMBLY DETAIL					
		3 PLACES ±0.	±.010	CHECKED BY & DATE BBARKER 02/10/17	MATERIAL NO. SEE CHART		DRAWING NO. SD-70984-100	SHEET NO. 1 OF 1		
		2 PLACES ±0.25	±.015	APPROVED BY & DATE SMILLER 02/10/17	MATERIAL NO. SEE CHART		DRAWING NO. SD-70984-100	SHEET NO. 1 OF 1		
1 PLACE ±0.38	±.	ANGULAR: ± 1/2 °	DRAFT WHERE APPLICABLE MUST REMAIN WITHIN DIMENSIONS		THIS DRAWING CONTAINS INFORMATION THAT IS PROPRIETARY TO MOLEX INCORPORATED AND SHOULD NOT BE USED WITHOUT WRITTEN PERMISSION.		SIZE C			