



Chipsmall Limited consists of a professional team with an average of over 10 year of expertise in the distribution of electronic components. Based in Hongkong, we have already established firm and mutual-benefit business relationships with customers from,Europe,America and south Asia,supplying obsolete and hard-to-find components to meet their specific needs.

With the principle of “Quality Parts,Customers Priority,Honest Operation,and Considerate Service”,our business mainly focus on the distribution of electronic components. Line cards we deal with include Microchip,ALPS,ROHM,Xilinx,Pulse,ON,Everlight and Freescale. Main products comprise IC,Modules,Potentiometer,IC Socket,Relay,Connector.Our parts cover such applications as commercial,industrial, and automotives areas.

We are looking forward to setting up business relationship with you and hope to provide you with the best service and solution. Let us make a better world for our industry!



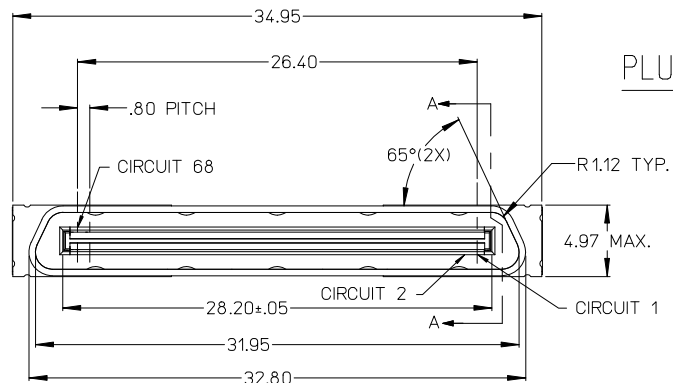
Contact us

Tel: +86-755-8981 8866 Fax: +86-755-8427 6832

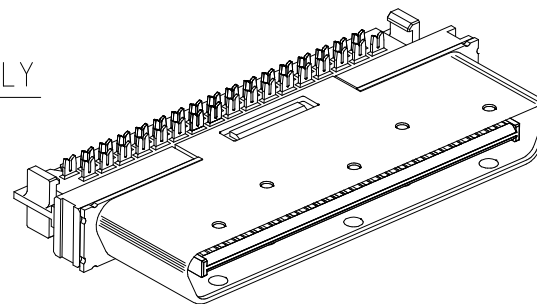
Email & Skype: info@chipsmall.com Web: www.chipsmall.com

Address: A1208, Overseas Decoration Building, #122 Zhenhua RD., Futian, Shenzhen, China





PLUG ASSEMBLY



NOTES:

1. MATERIALS:

HOUSING: GLASS FILLED LIQUID CRYSTAL POLYMER (LCP), NATURAL, UL 94V-0
TERMINALS: COPPER ALLOY

SHIELD: ALUMINUM KILLED STEEL

2. FINISH: TERMINALS: 0.05 MICROMETER MINIMUM GOLD FLASH OVER 0.75 MICROMETER MINIMUM PALLADIUM NICKEL IN THE CONTACT AREA
NICKEL UNDERPLATE OVERALL

SHIELD: 2.54 MICROMETER MINIMUM BRIGHT NICKEL OVER COPPER FLASH.

3. ASSEMBLY MATES WITH RECEPTACLE #71430 AND 73776.

4. PACKAGED PER PK-70873-0851.

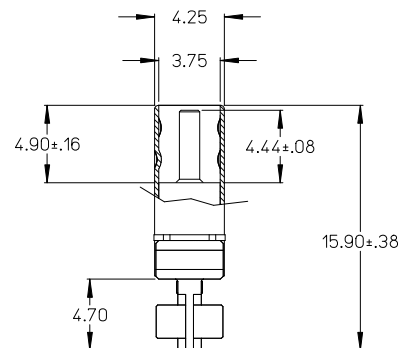
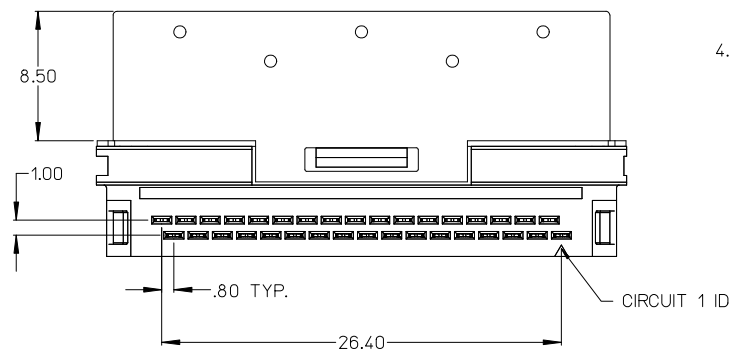
5. PRODUCT CONFORMS TO PS-71425-9999.

6. FOR DIE CAST SHELL KITS SEE SD-73796-008.

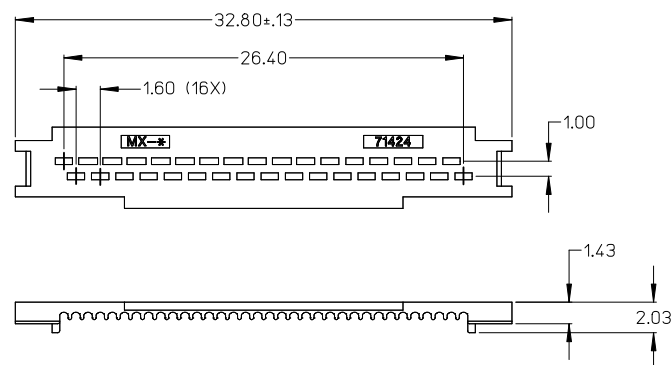
7. PART COMPLIES WITH CLASS B OF COSMETIC SPECIFICATION PS-45499-002.

8. TO BE USED WITH 28-30 AWG STRANDED WIRE OR 30 AWG SOLID CORE WIRE.

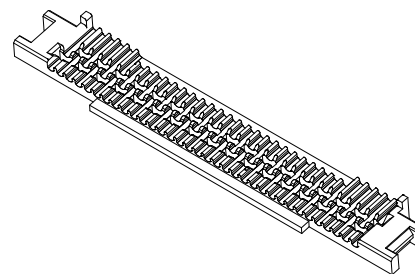
9. SEE AS-71425-001 FOR WIRE TERMINATION GUIDELINES.



SECTION A-A



WIRE COVER



KIT COMPONENTS			
71425-3001	PLUG ASSEMBLY	1	71425-0002
	WIRE COVER	2	71424-0001
KIT ITEM #	DESCRIPTION	QUANTITY	ITEM PART #

CLARIFY NOTE 7
EC NO: UCP2011-0353
DRAWN: BBARKER 2010/08/09
CHKD: SMILLER 2010/11/23
APPR: SMILLER 2010/11/23

QUALITY SYMBOLS
▽=0
▽=0

GENERAL TOLERANCES (UNLESS SPECIFIED)

	mm	INCH
4 PLACES	± .005	± .0004
3 PLACES	± .005	± .0004
2 PLACES	± .025	± .0010
1 PLACE	± .005	± .0004

ANGULAR ±1/2°

DRAFT WHERE APPLICABLE
MUST REMAIN WITHIN DIMENSIONS

DIMENSION STYLE
MM ONLY

DRAWN BY DATE
BBARKER 2002/10/29

CHECKED BY DATE
DMORGAN 2002/10/29

APPROVED BY DATE
SMILLER 2010/11/23

MATERIAL NO.
SEE TABLE

SIZE
C

SCALE
METRIC

DESIGN UNITS
METRIC

THIRD ANGLE PROJECTION

TITLE
VHDCI 0.8 MM PITCH
68 CIRCUIT IDT PLUG
KIT - SALES ASSEMBLY

MOLEX INCORPORATED

DOCUMENT NO.
SD-71425-2002

SHEET NO.
1 OF 1

THIS DRAWING CONTAINS INFORMATION THAT IS PROPRIETARY TO MOLEX INCORPORATED AND SHOULD NOT BE USED WITHOUT WRITTEN PERMISSION