



Chipsmall Limited consists of a professional team with an average of over 10 year of expertise in the distribution of electronic components. Based in Hongkong, we have already established firm and mutual-benefit business relationships with customers from,Europe,America and south Asia,supplying obsolete and hard-to-find components to meet their specific needs.

With the principle of “Quality Parts,Customers Priority,Honest Operation,and Considerate Service”,our business mainly focus on the distribution of electronic components. Line cards we deal with include Microchip,ALPS,ROHM,Xilinx,Pulse,ON,Everlight and Freescale. Main products comprise IC,Modules,Potentiometer,IC Socket,Relay,Connector.Our parts cover such applications as commercial,industrial, and automotives areas.

We are looking forward to setting up business relationship with you and hope to provide you with the best service and solution. Let us make a better world for our industry!



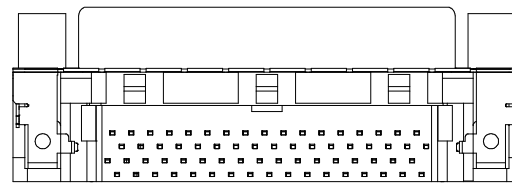
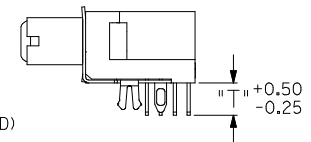
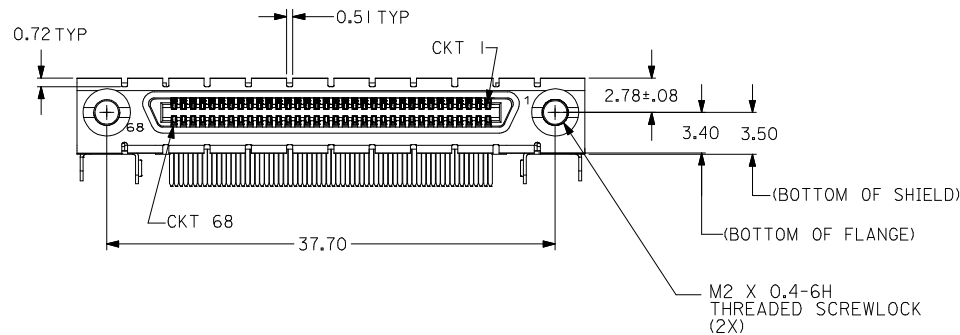
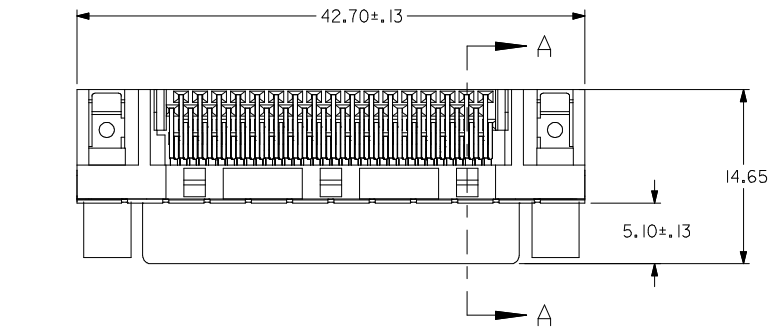
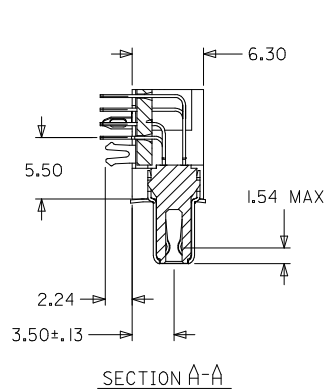
Contact us

Tel: +86-755-8981 8866 Fax: +86-755-8427 6832

Email & Skype: info@chipsmall.com Web: www.chipsmall.com

Address: A1208, Overseas Decoration Building, #122 Zhenhua RD., Futian, Shenzhen, China



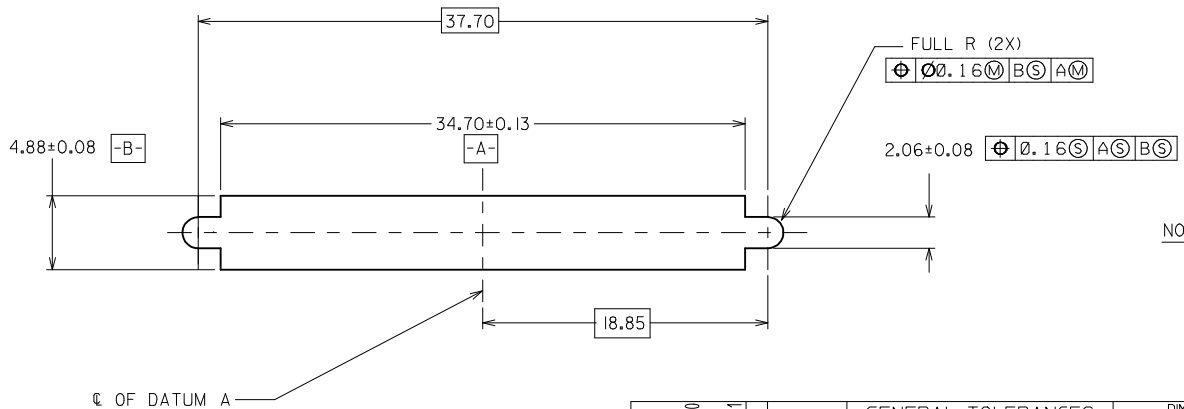
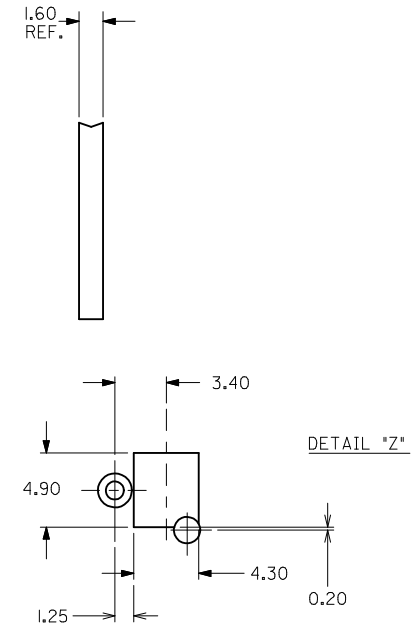
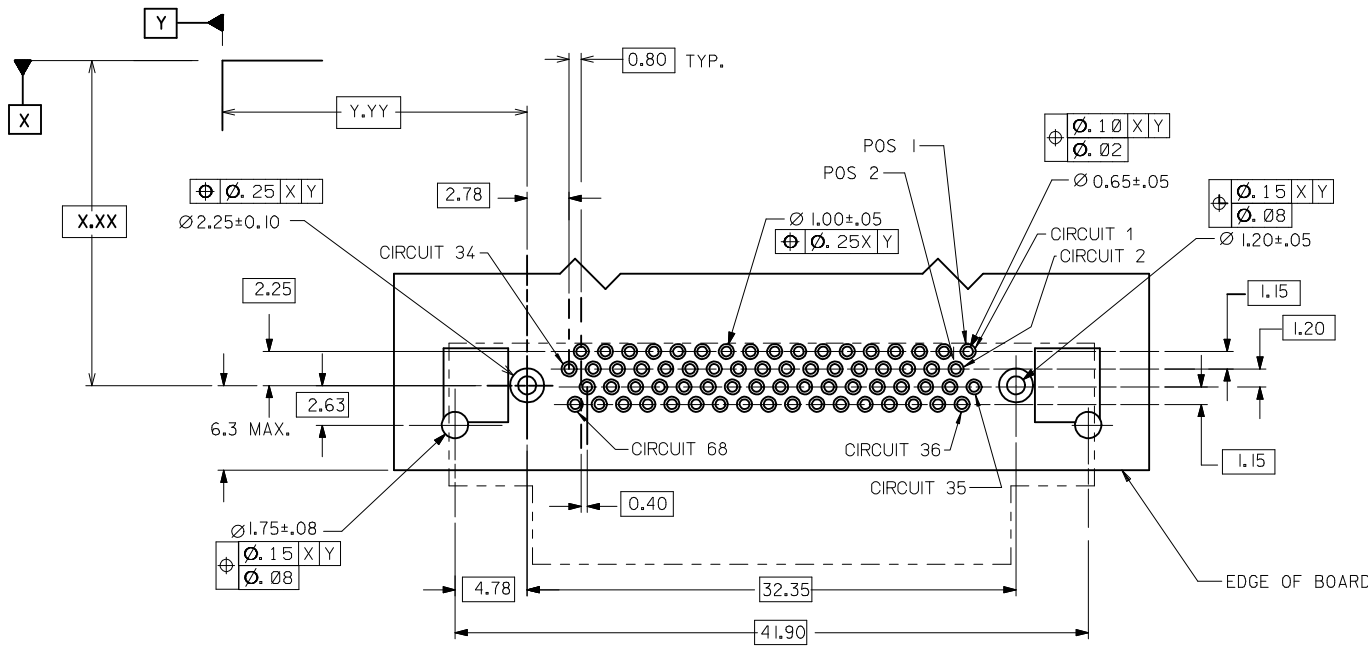


NOTES:

- MATERIALS:**
HOUSING: LIQUID CRYSTAL POLYMER (LCP), COLOR: BLACK, UL 94V-0
TERMINAL: COPPER ALLOY
SHIELD: STEEL
TAIL ALIGNER: LIQUID CRYSTAL POLYMER, COLOR: BLACK, UL 94V-0
- FINISH:**
TERMINAL: 0.76 MICROMETER GOLD IN THE CONTACT AREA
1.87 MICROMETER MINIMUM TIN IN THE SOLDER TAIL AREA
NICKEL UNDERPLATE OVERALL
SHIELD: 3.81 MICROMETERS MINIMUM BRIGHT TIN OVER 1.27 MICROMETERS MINIMUM NICKEL OVER COPPER FLASH (OPTIONAL).
- APPLICABLE PRODUCT SPEC: PSX-71425-9999.
- PRODUCT PACKAGED PER PK-70873-0823
- RECOMMENDED PCB THICKNESS: 1.60±0.15 MM
- APPLICABLE STANDARDS: EIA-3652 AND SFF-8441.
- DATE CODE : YR/WK, PER EIA-476-A.
- TORQUE TO INSTALL SCREWLOCKS INTO THREADED INSERTS: 0.34 Nm MAXIMUM.
- THE PRIMARY SHIPPING CARTON WILL BE LABELED "COMPLIANT TO ROHS DIRECTIVE 2002/95/EC AND ELV ANNEX II OF DIRECTIVE 2000/53/EC". CARTONS WITHOUT THIS LABEL MAY CONTAIN PRODUCT WITH LEAD.

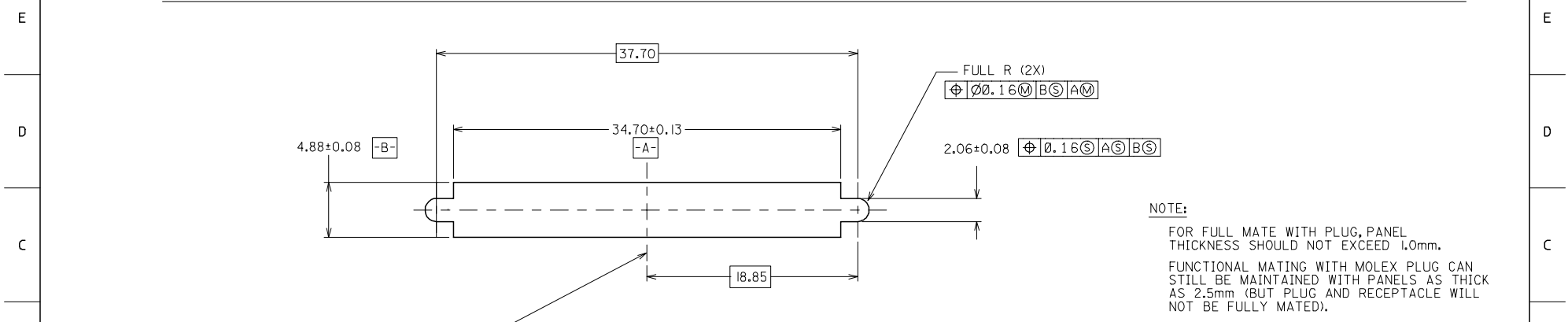
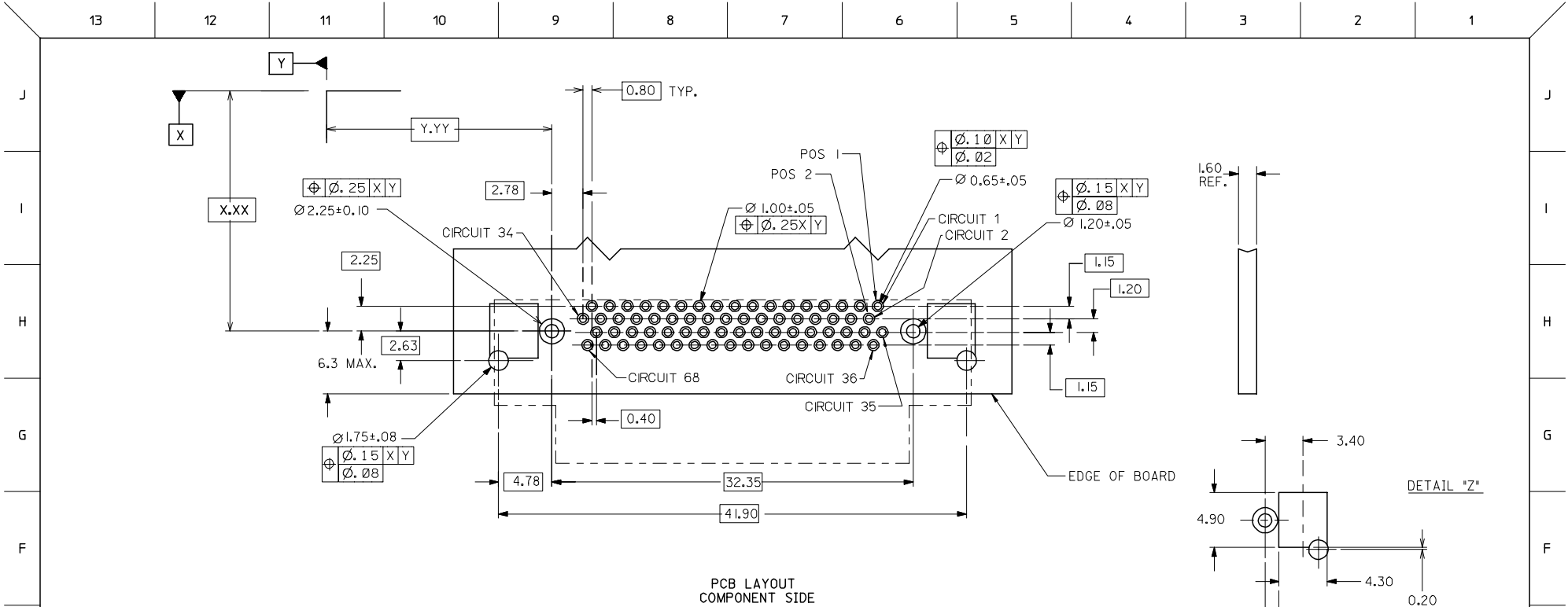
MATERIAL NUMBER	TAIL LENGTH *T*
71430-0050	2.71

NEW CAD FORMAT EC NO: UCP2012-3896 DRWN:BBARKER 2012/08/30 CHKD:MWOLFE APPR:SMILLER 2012/08/31	QUALITY SYMBOLS ▽=0 ▽=0 ▽=0	GENERAL TOLERANCES (UNLESS SPECIFIED)		DIMENSION STYLE MM ONLY	SCALE	DESIGN UNITS INCH	THIRD ANGLE PROJECTION
		mm	INCH	DRAWN BY BBARKER	DATE 10/29/2002	TITLE SALES ASSY VHDCI 0.8MM PITCH 68 CKT RIGHT ANGLE RECTP W/ ENHANCED SHIELD	
		4 PLACES ± ---	± ---	CHECKED BY	DATE	molex DOCUMENT NO. SD-71430-001 SHEET NO. 1 OF 2	
		3 PLACES ± ---	± ---	APPROVED BY SMILLER	DATE 2012/08/31		
ANGULAR ±1/2°		MATERIAL NO.		THIS DRAWING CONTAINS INFORMATION THAT IS PROPRIETARY TO MOLEX. INCORPORATED AND SHOULD NOT BE USED WITHOUT WRITTEN PERMISSION			
DRAFT WHERE APPLICABLE MUST REMAIN WITHIN DIMENSIONS		SIZE C					



NOTE:
 FOR FULL MATE WITH PLUG, PANEL THICKNESS SHOULD NOT EXCEED 1.0mm.
 FUNCTIONAL MATING WITH MOLEX PLUG CAN STILL BE MAINTAINED WITH PANELS AS THICK AS 2.5mm (BUT PLUG AND RECEPTACLE WILL NOT BE FULLY MATED).

SEE SHEET 1 EC NO: UCP2012-3896 DRWN:BBARKER 2012/08/30 CHKD:MMOLFE APPR:SMILLER 2012/08/31	QUALITY SYMBOLS	GENERAL TOLERANCES (UNLESS SPECIFIED)	DIMENSION STYLE	SCALE	DESIGN UNITS	THIRD ANGLE PROJECTION
	▽=0	mm INCH	MM ONLY	INCH	INCH	
	▽=0	4 PLACES ± --- ± ---	DRAWN BY DATE	TITLE		
	▽=0	3 PLACES ± --- ± ---	CHECKED BY DATE	SALES ASSY VHDCI 0.8MM PITCH 68 CKT RIGHT ANGLE RECTP W/ ENHANCED SHIELD		
		2 PLACES ± 0.25 ± ---	APPROVED BY DATE			
		0 PLACE ± --- ± ---	SMILLER 2012/08/31			
		ANGULAR ±1/2°	MATERIAL NO.	DOCUMENT NO.		
		DRAFT WHERE APPLICABLE MUST REMAIN WITHIN DIMENSIONS	SEE TBL, SHT 1	SD-71430-001		
			SIZE			
			THIS DRAWING CONTAINS INFORMATION THAT IS PROPRIETARY TO MOLEX INCORPORATED AND SHOULD NOT BE USED WITHOUT WRITTEN PERMISSION			



CLARIFY PINOUT EC NO: UCP2006-1816 DRAWN BY: BARRA 2006/02/13 CHKD: BBARKER 2006/02/23 APPR: SMILLER 2006/02/23	QUALITY SYMBOLS $\nabla=0$ $\nabla=0$	GENERAL TOLERANCES (UNLESS SPECIFIED)		DIMENSION STYLE MM ONLY		SCALE 4:1	DESIGN UNITS METRIC	\odot \square THIRD ANGLE PROJECTION	
		mm	INCH	DRAWN BY	DATE	TITLE	VHDCI 0.8 MM PITCH 68CKT RIGHT ANGLE RECEPT WITH ENHANCED SHIELD MOLEX INCORPORATED		
		4 PLACES ±	±	BBARKER	2002/10/29				
		3 PLACES ±	±	CHECKED BY	DATE		MATERIAL NO. SEE TABLE SD-71430-001		
2 PLACES ±	±	DMORGAN	2002/10/29						
1 PLACE ±	±	APPROVED BY	DATE		SHEET NO. 2 OF 2				
ANGULAR ±1/2°		SMILLER	2002/10/29						
DRAFT WHERE APPLICABLE MUST REMAIN WITHIN DIMENSIONS				SIZE C		THIS DRAWING CONTAINS INFORMATION THAT IS PROPRIETARY TO MOLEX INCORPORATED AND SHOULD NOT BE USED WITHOUT WRITTEN PERMISSION			