



Chipsmall Limited consists of a professional team with an average of over 10 year of expertise in the distribution of electronic components. Based in Hongkong, we have already established firm and mutual-benefit business relationships with customers from,Europe,America and south Asia,supplying obsolete and hard-to-find components to meet their specific needs.

With the principle of “Quality Parts,Customers Priority,Honest Operation,and Considerate Service”,our business mainly focus on the distribution of electronic components. Line cards we deal with include Microchip,ALPS,ROHM,Xilinx,Pulse,ON,Everlight and Freescale. Main products comprise IC,Modules,Potentiometer,IC Socket,Relay,Connector.Our parts cover such applications as commercial,industrial, and automotives areas.

We are looking forward to setting up business relationship with you and hope to provide you with the best service and solution. Let us make a better world for our industry!



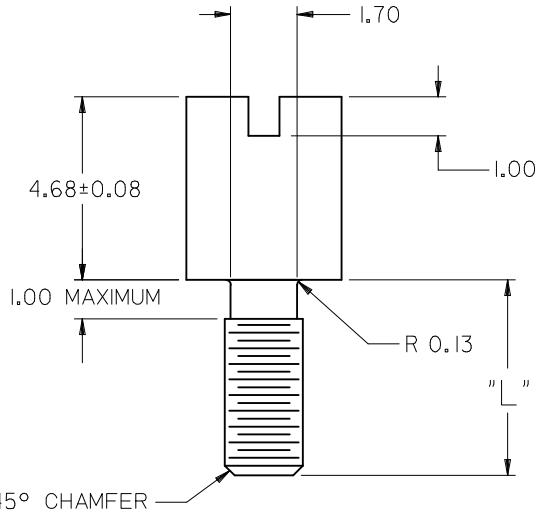
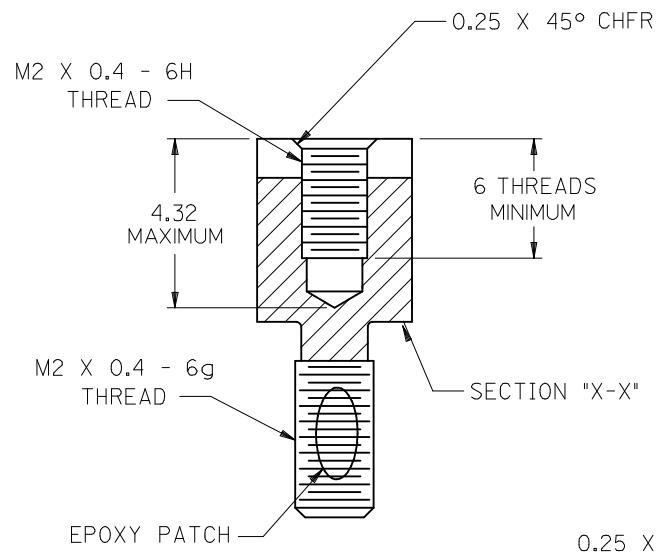
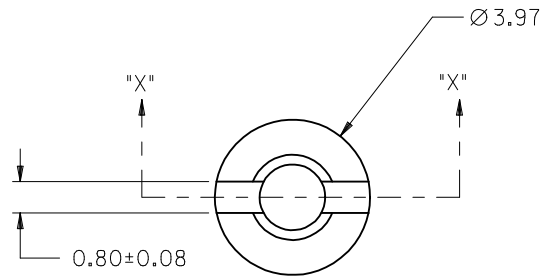
Contact us

Tel: +86-755-8981 8866 Fax: +86-755-8427 6832

Email & Skype: info@chipsmall.com Web: www.chipsmall.com

Address: A1208, Overseas Decoration Building, #122 Zhenhua RD., Futian, Shenzhen, China





PART NUMBER	MALE THREAD LENGTH "L"
71433-0008	5.00
71433-0011	6.15

- NOTES:**
1. MATERIAL: HOT ROLLED STEEL.
 2. FINISH: NICKEL PLATE
 3. PACKAGED IN QUANTITIES OF 2000 PCS.(+5%/-0%)
PACKAGED IN A SEALED BAG.

CLARIFY FEM THRS EC NO: UCP2009-1199 DR: WJ:BBARKER CHKD:BSMART APPR:SMILLER	2008/12/22 2009/01/06 2009/01/06	DESCRIPTION REV	QUALITY SYMBOLS	GENERAL TOLERANCES (UNLESS SPECIFIED)	DIMENSION STYLE	SCALE	DESIGN UNITS	THIRD ANGLE PROJECTION	
			▽=0	mm INCH	MM ONLY	8:1	METRIC	☉	
			▽=0	4 PLACES ± --- ± ---	DRAWN BY DATE	TITLE	MOLEX INCORPORATED	DOCUMENT NO.	SHEET NO.
				3 PLACES ± --- ± ---	KSWEENEY 1998/02/08				
	2 PLACES ± 0.20 ± ---	CHECKED BY DATE	SCREWLOCK WITH EPOXY PATCH, M2 X 0.4 MM THREADS, ROUND HEAD						
	1 PLACE ± --- ± ---	KSWEENEY 1998/02/08	MOLEX INCORPORATED						
	ANGULAR ± 1/2°	APPROVED BY DATE	SD-71433-006						
		MBANAKIS 1998/02/08	THIS DRAWING CONTAINS INFORMATION THAT IS PROPRIETARY TO MOLEX INCORPORATED AND SHOULD NOT BE USED WITHOUT WRITTEN PERMISSION						
		MATERIAL NO.	SEE TABLE						
		SIZE	B						