



Chipsmall Limited consists of a professional team with an average of over 10 year of expertise in the distribution of electronic components. Based in Hongkong, we have already established firm and mutual-benefit business relationships with customers from,Europe,America and south Asia,supplying obsolete and hard-to-find components to meet their specific needs.

With the principle of "Quality Parts,Customers Priority,Honest Operation,and Considerate Service",our business mainly focus on the distribution of electronic components. Line cards we deal with include Microchip,ALPS,ROHM,Xilinx,Pulse,ON,Everlight and Freescale. Main products comprise IC,Modules,Potentiometer,IC Socket,Relay,Connector.Our parts cover such applications as commercial,industrial, and automotives areas.

We are looking forward to setting up business relationship with you and hope to provide you with the best service and solution. Let us make a better world for our industry!



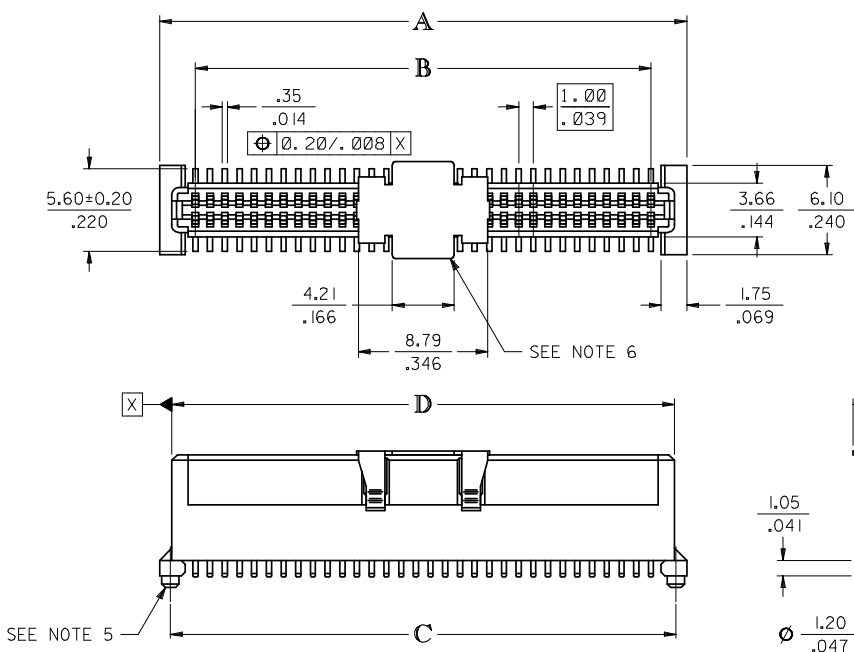
Contact us

Tel: +86-755-8981 8866 Fax: +86-755-8427 6832

Email & Skype: info@chipsmall.com Web: www.chipsmall.com

Address: A1208, Overseas Decoration Building, #122 Zhenhua RD., Futian, Shenzhen, China





CIRCUIT SIZE	DIM. A	DIM. B	DIM. C	DIM. D
20	$\frac{13.90}{.547}$	$\frac{9.00}{.354}$	$\frac{12.40}{.488}$	$\frac{12.22}{.481}$
30	$\frac{18.90}{.744}$	$\frac{14.00}{.551}$	$\frac{17.40}{.685}$	$\frac{17.22}{.678}$
40	$\frac{23.90}{.941}$	$\frac{19.00}{.748}$	$\frac{22.40}{.882}$	$\frac{22.22}{.875}$
50	$\frac{28.90}{1.138}$	$\frac{24.00}{.945}$	$\frac{27.40}{1.079}$	$\frac{27.22}{1.072}$
60	$\frac{33.90}{1.335}$	$\frac{29.00}{1.142}$	$\frac{32.40}{1.276}$	$\frac{32.22}{1.269}$
64	$\frac{35.90}{1.413}$	$\frac{31.00}{1.220}$	$\frac{34.40}{1.354}$	$\frac{34.22}{1.347}$
70	$\frac{38.90}{1.531}$	$\frac{34.00}{1.339}$	$\frac{37.40}{1.472}$	$\frac{37.22}{1.465}$
80	$\frac{43.90}{1.728}$	$\frac{39.00}{1.535}$	$\frac{42.40}{1.669}$	$\frac{42.22}{1.662}$
84	$\frac{45.90}{1.807}$	$\frac{41.00}{1.614}$	$\frac{44.40}{1.748}$	$\frac{44.22}{1.741}$
90	$\frac{48.90}{1.925}$	$\frac{44.00}{1.732}$	$\frac{47.40}{1.866}$	$\frac{47.22}{1.859}$
100	$\frac{53.90}{2.122}$	$\frac{49.00}{1.929}$	$\frac{52.40}{2.063}$	$\frac{52.22}{2.056}$
110	$\frac{58.90}{2.319}$	$\frac{54.00}{2.126}$	$\frac{57.40}{2.260}$	$\frac{57.22}{2.253}$
120	$\frac{63.90}{2.516}$	$\frac{59.00}{2.323}$	$\frac{62.40}{2.457}$	$\frac{62.22}{2.450}$

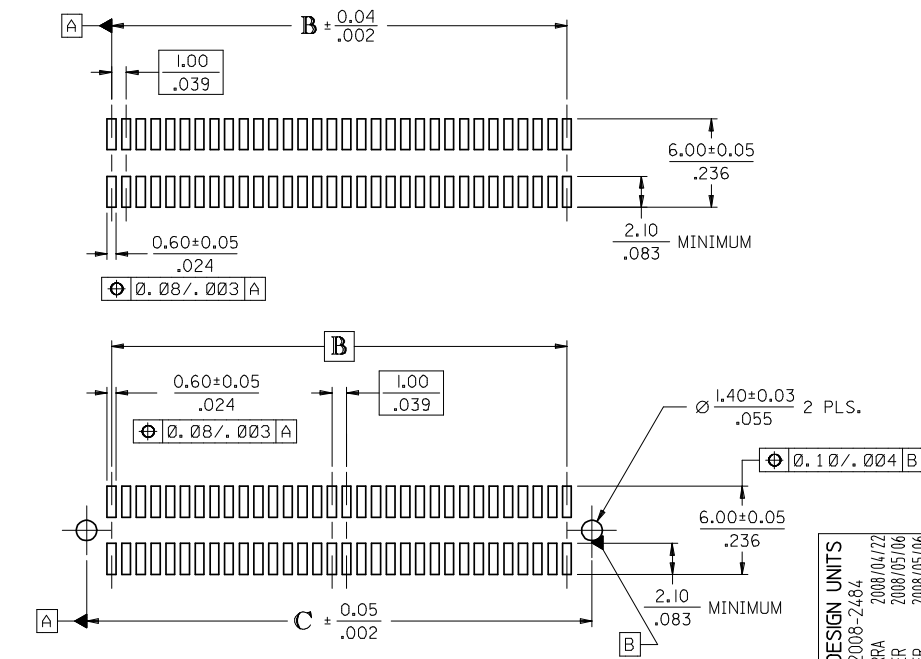
NOTES:

- 64-CIRCUIT RECEPTACLE ASSEMBLY WITH PEGS AND VACUUM CAP SHOWN FOR ILLUSTRATION PURPOSES ONLY.
- HOUSING MATERIAL: G.F. THERMOPLASTIC; UL RATING: 94V-0; COLOR: WHITE
TERMINAL MATERIAL: PHOSPHOR BRONZE; 0.205/.0080 THICK
VACUUM CAP MATERIAL: STAINLESS STEEL; 0.255/.0100 THICK
- COPLANARITY OF SMT TAILS: 0.10/.004 MAX.
- PACKAGING SPECIFICATIONS: REFER TO CHART ON SHEET 2.
- PEGS ARE OPTIONAL. REFER TO CHART ON SHEET 2.
- VACUUM PICK & PLACE CAP IS OPTIONAL. REFER TO CHART ON SHEET 2.
- THIS PART CONFORMS TO EIA STANDARD 700 AAAB FOR 1.0mm TWO-PART CONNECTORS FOR USE WITH PARALLEL PRINTED BOARDS.
- THIS PART, WHEN MATED WITH MOLEX 1.0mm PLUG CONNECTOR SERIES 71436, CONFORMS TO MOLEX PRODUCT SPECIFICATION PS-71436-9999. REFER TO CHART ON SHEET 2 FOR MATED STACK HEIGHTS FOR THIS RECEPTACLE.
- DIMENSIONS ARE IN mm/IN. INCH DIMENSIONS SHOWN FOR REFERENCE ONLY.

PLATING PER ES-88:

30 GOLD - 0.00076/.000030 MINIMUM GOLD PLATING IN CONTACT AREA,
0.0019/.000075 MINIMUM TIN PLATING IN TERMINAL AREA,
OVER 0.00127/.000050 MINIMUM NICKEL PLATING OVERALL

2	K
1	K
SHT	REV



RECOMMENDED PCB LAYOUT (WITH AND WITHOUT PEGS)

RECOMMENDED PCB THICKNESS: 1.00±0.10/.039±.004

CORRECT DESIGN UNITS	QUALITY SYMBOLS
EC NO: UCP2008-2484	▽=0
DRWN:MSI/BARRA 2008/04/22	▽=0
CHKD:BBARKER 2008/05/06	
APPR:SMILLER 2008/05/06	
DESCRIPTION	REV

GENERAL TOLERANCES (UNLESS SPECIFIED)	DIMENSION STYLE	SCALE	DESIGN UNITS	THIRD ANGLE PROJECTION
	MM/IN	4:1	METRIC	
4 PLACES ± --- ± ---	DRAWN BY	DATE	TITLE	
3 PLACES ± --- ± .005	REED	1995/03/23	ASSY, 1MM BOARD-TO-BOARD RECEPTACLE CONECTOR 8.30/.327 HIGH	
2 PLACES ± 0.13 ± .01	CHECKED BY	DATE	MOLEX MOLEX INCORPORATED	
1 PLACE ± 0.25 ± ---	REED	1995/03/23		
ANGULAR ±1/2°	APPROVED BY	DATE	DOCUMENT NO. SDA-71439-2***	
	BIXLER	1995/03/23	SHEET NO. 1 OF 2	
DRAFT WHERE APPLICABLE MUST REMAIN WITHIN DIMENSIONS	SEE TABLE			
	SIZE		THIS DRAWING CONTAINS INFORMATION THAT IS PROPRIETARY TO MOLEX INCORPORATED AND SHOULD NOT BE USED WITHOUT WRITTEN PERMISSION	

STANDARD

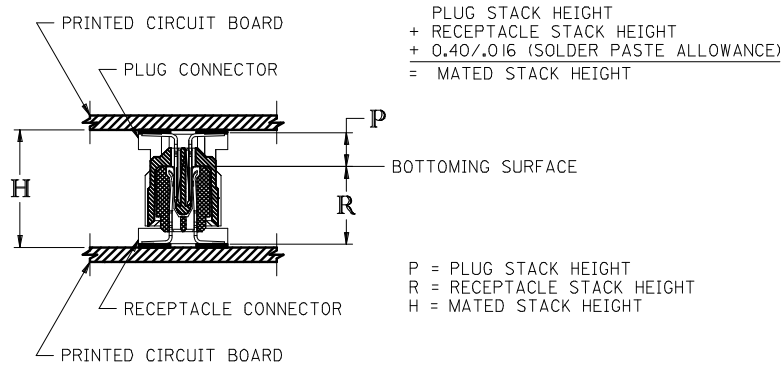
CIRCUIT SIZE	RECEPTACLE ASSY. ITEM NUMBER	PEGS	PICK & PLACE CAP	PACKAGING SPEC. NUMBER	PACKAGING TYPE
64	71439-2164	YES	NO	PK-70873-0601	TUBE
64	71439-2864	NO	YES	PK-70873-063	TAPE & REEL
64	71439-2564	NO	NO	PK-70873-0683	TUBE

SPECIAL

CIRCUIT SIZE	RECEPTACLE ASSY. ITEM NUMBER	PEGS	PICK & PLACE CAP	PACKAGING SPEC. NUMBER	PACKAGING TYPE
64	71439-2464	YES	YES	PK-70873-063	TAPE & REEL

RECOMMENDED PLUG/RECEPTACLE COMBINATION FOR MATED STACK HEIGHT PER EIA STANDARD 700 AAAB

MATED STACK HEIGHT	RECEPTACLE HEIGHT	RECEPTACLE SERIES NO.	PLUG HEIGHT	PLUG SERIES NO.
13.00/.512	8.30/.327	71439-2***	4.30/.169	71436-2***



CORRECT DESIGN UNITS EC NO: UCP2008-2484 DRWN:MS1BARRA 2008/04/22 CHKD:BBARKER 2008/05/06 APPR:SMILLER 2008/05/06	QUALITY SYMBOLS ▽=0 ▽=0	GENERAL TOLERANCES (UNLESS SPECIFIED) mm INCH	DIMENSION STYLE MM/IN	SCALE ---	DESIGN UNITS METRIC	THIRD ANGLE PROJECTION
	4 PLACES ±--- ±--- 3 PLACES ±--- ±--- 2 PLACES ±--- ±--- 1 PLACE ±--- ±---	DRAWN BY DATE REED 1995/03/23 CHECKED BY DATE REED 1995/03/23 APPROVED BY DATE BIXLER 1995/03/23	TITLE ASSY, 1MM BOARD-TO-BOARD RECEPTACLE CONNECTOR 8.30/.327 HIGH			
	ANGULAR ±1/2° DRAFT WHERE APPLICABLE MUST REMAIN WITHIN DIMENSIONS	MATERIAL NO. SEE TABLE	MOLEX INCORPORATED	DOCUMENT NO. SDA-71439-2***	SHEET NO. 2 OF 2	
	THIS DRAWING CONTAINS INFORMATION THAT IS PROPRIETARY TO MOLEX INCORPORATED AND SHOULD NOT BE USED WITHOUT WRITTEN PERMISSION					