



Chipsmall Limited consists of a professional team with an average of over 10 year of expertise in the distribution of electronic components. Based in Hongkong, we have already established firm and mutual-benefit business relationships with customers from,Europe,America and south Asia,supplying obsolete and hard-to-find components to meet their specific needs.

With the principle of "Quality Parts,Customers Priority,Honest Operation,and Considerate Service",our business mainly focus on the distribution of electronic components. Line cards we deal with include Microchip,ALPS,ROHM,Xilinx,Pulse,ON,Everlight and Freescale. Main products comprise IC,Modules,Potentiometer,IC Socket,Relay,Connector.Our parts cover such applications as commercial,industrial, and automotives areas.

We are looking forward to setting up business relationship with you and hope to provide you with the best service and solution. Let us make a better world for our industry!



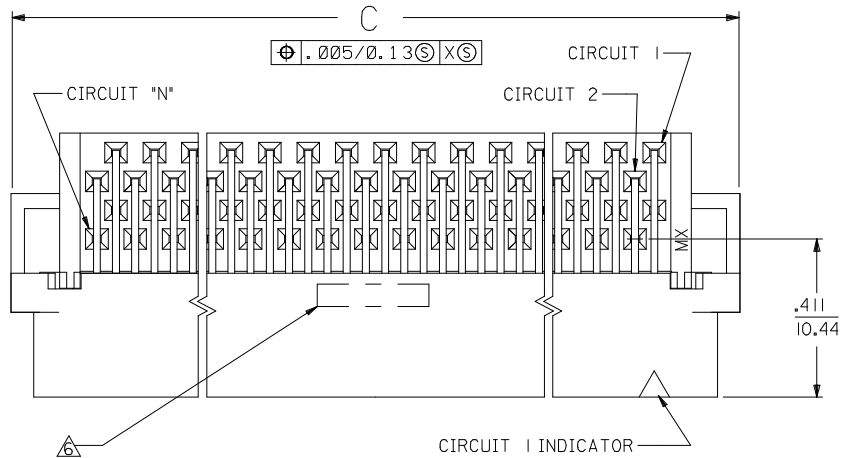
## Contact us

Tel: +86-755-8981 8866 Fax: +86-755-8427 6832

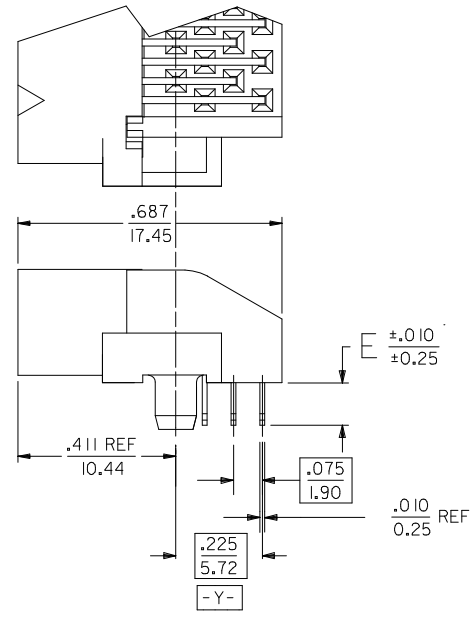
Email & Skype: info@chipsmall.com Web: www.chipsmall.com

Address: A1208, Overseas Decoration Building, #122 Zhenhua RD., Futian, Shenzhen, China

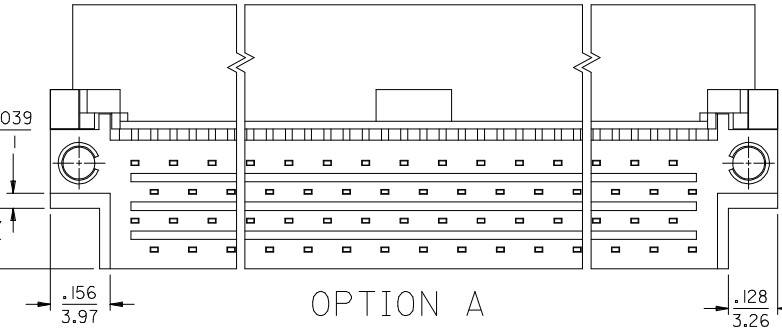
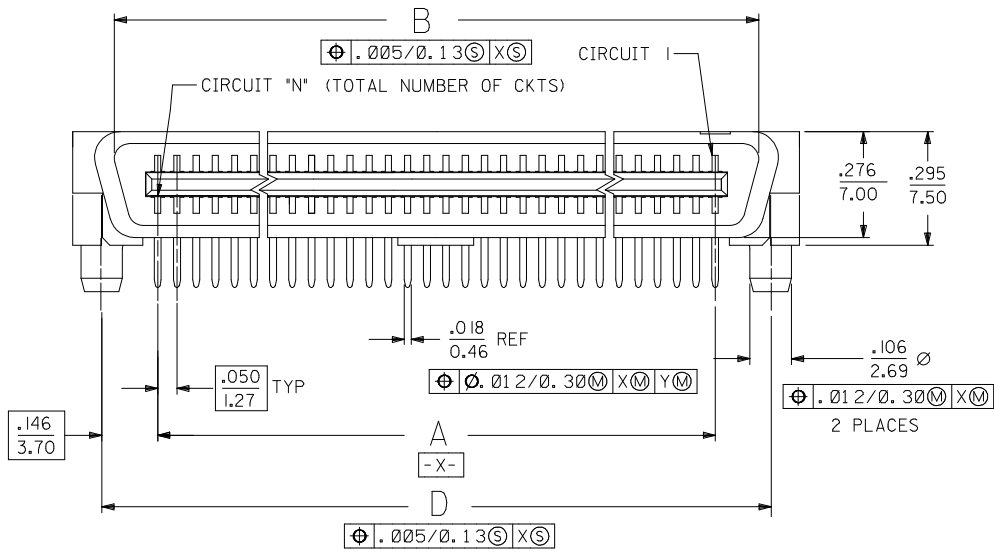




- NOTES:**
- MATERIALS:**  
HOUSING: LIQUID CRYSTAL POLYMER (LCP), GLASS-FILLED, UL 94V-0,  
COLOR: BLACK  
TERMINALS: BRASS.
  - FINISH:**  
TERMINAL: SELECTIVE GOLD (Au) IN THE CONTACT AREA;  
THICKNESS= .76 MICROMETER (30 MICROINCH) MINIMUM;  
SELECTIVE TIN (Sn) ALLOY IN THE PC TAIL AREA;  
THICKNESS= 1.27 MICROMETER (50 MICROINCH) MINIMUM;  
NICKEL (Ni) UNDERPLATE OVERALL.
  - ASSEMBLY MATES WITH MOLEX P/N SDA-71660-\*\*\*\*
  - CONFORMS TO PRODUCT SPEC: PS-71660.
- RECOMMENDED P.C. BOARD THICKNESS IS .062 (1.6).  
FOUR DIGIT DATE CODE (WK. YR.) EXAMPLE 26 96 LOCATED IN AREA SHOWN.  
TOOLING STATUS: \*X\* INDICATES NO TOOLING AVAILABLE.  
CONTACT FACTORY FOR FURTHER INFORMATION.

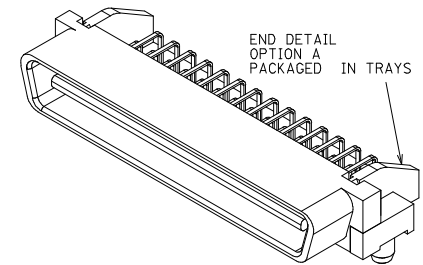
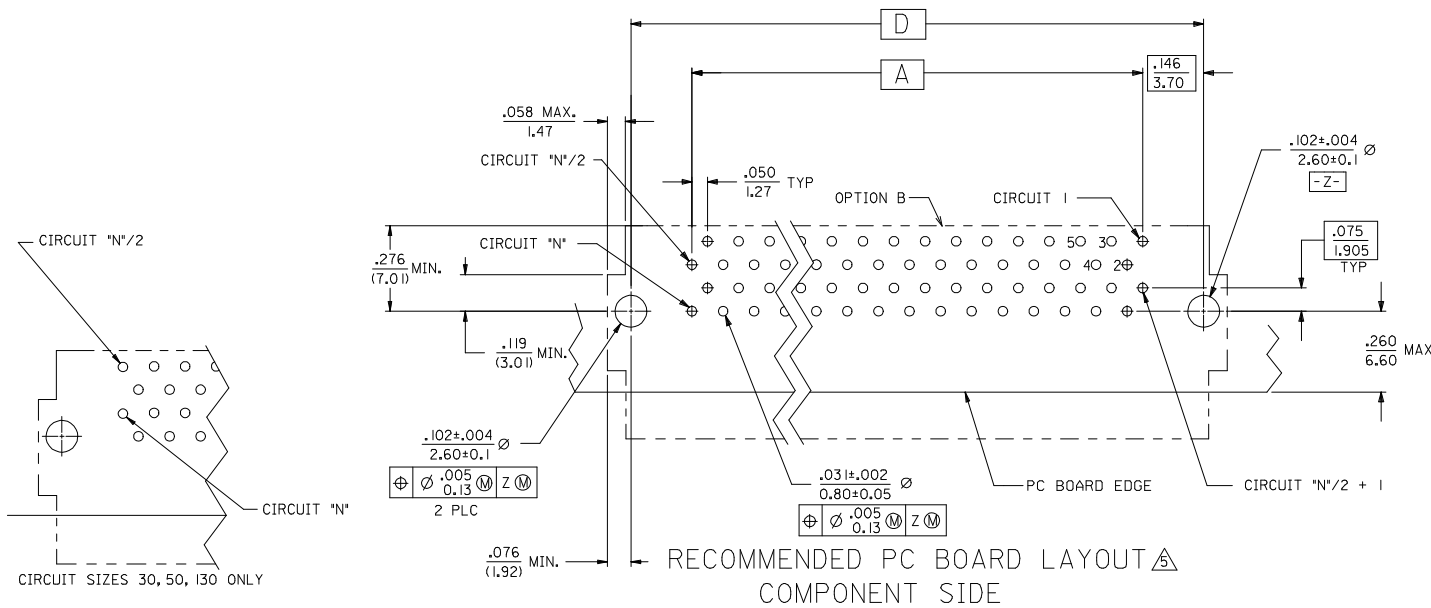


END DETAIL  
OPTION A  
(BOTH ENDS)

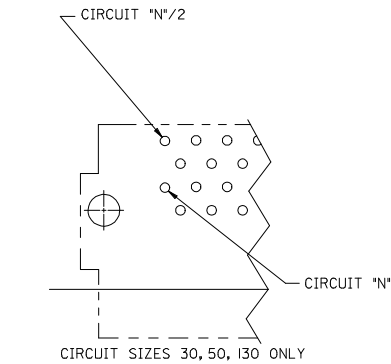


OPTION A

<b>CHANGE MATERIAL</b> EC NO: UCP2009-1254 DRWN:MSI:BARRA 2008/12/19 CHKD:BBARKER 2009/01/06 APPR:SMILLER 2009/01/06	DESCRIPTION REV	QUALITY SYMBOLS ▽=0 ▽=0	GENERAL TOLERANCES (UNLESS SPECIFIED)		DIMENSION STYLE IN/MM		SCALE 4:1	DESIGN UNITS INCH	THIRD ANGLE PROJECTION
			mm INCH	INCH mm	DRAWN BY RKADAMS	DATE 2004/08/18	TITLE SALES ASSEMBLY EBBI 50D RIGHT ANGLE PLUG CONNECTOR		
4 PLACES ± --- ± --- 3 PLACES ± --- ± .010 2 PLACES ± 0.25 ± --- 1 PLACE ± --- ± --- ANGULAR ± 1/2°			DRAFT WHERE APPLICABLE MUST REMAIN WITHIN DIMENSIONS		APPROVED BY SMILLER		DATE 2004/08/18	MOLEX INCORPORATED	
MATERIAL NO. SEE TABLE			DOCUMENT NO. SD-71661-007		SHEET NO. 1 OF 2		THIS DRAWING CONTAINS INFORMATION THAT IS PROPRIETARY TO MOLEX INCORPORATED AND SHOULD NOT BE USED WITHOUT WRITTEN PERMISSION		



50 CIRCUIT ASSEMBLY SHOWN

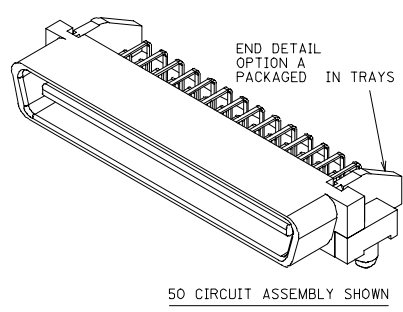
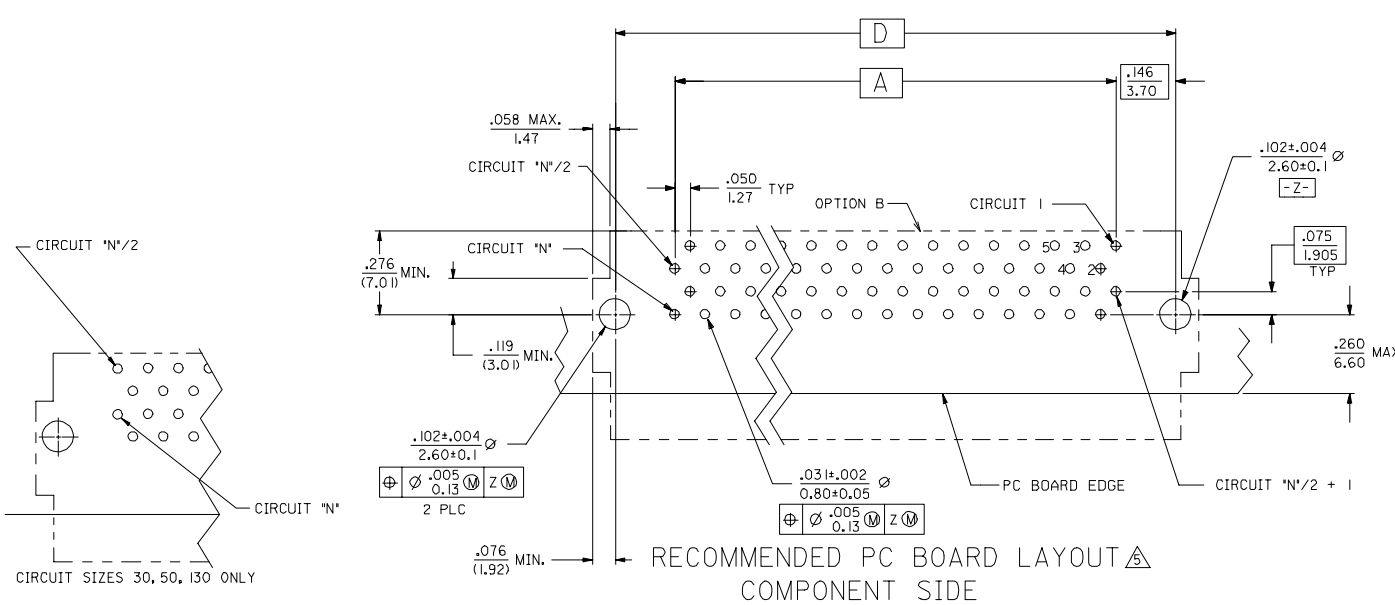


RECOMMENDED PC BOARD LAYOUT COMPONENT SIDE

		TRAY PACK PER SPEC. PK-70873-084*					END DETAIL OPTION 'A'
		D	C	B	A	CKT ('N')	ITEM NUMBER
.125 (3.18)	3.491 (88.68)	3.642 (92.50)	3.426 (87.02)	3.200 (81.28)	130		
	3.241 (82.33)	3.392 (86.15)	3.176 (80.67)	2.950 (74.93)	120		
	2.741 (69.63)	2.892 (73.45)	2.676 (67.97)	2.450 (62.23)	100		
	2.241 (56.93)	2.392 (60.75)	2.176 (55.27)	1.950 (49.53)	80		
	1.941 (49.31)	2.092 (53.13)	1.875 (47.65)	1.650 (41.91)	68		
	1.741 (44.23)	1.892 (48.05)	1.676 (42.57)	1.450 (36.83)	60		71661-2936
	1.491 (37.88)	1.642 (41.70)	1.426 (36.22)	1.200 (30.48)	50		
	1.241 (31.53)	1.392 (35.35)	1.176 (29.87)	.950 (24.13)	40		
	.991 (25.18)	1.142 (29.00)	.925 (23.52)	.700 (17.78)	30		
	.110 (2.79)	3.491 (88.68)	3.642 (92.50)	3.426 (87.02)	3.200 (81.28)	130	
3.241 (82.33)		3.392 (86.15)	3.176 (80.67)	2.950 (74.93)	120		
2.741 (69.63)		2.892 (73.45)	2.676 (67.97)	2.450 (62.23)	100		71661-2910
2.241 (56.93)		2.392 (60.75)	2.176 (55.27)	1.950 (49.53)	80		71661-2980
1.941 (49.31)		2.092 (53.13)	1.875 (47.65)	1.650 (41.91)	68		71661-2968
1.741 (44.23)		1.892 (48.05)	1.676 (42.57)	1.450 (36.83)	60		71661-2960
1.491 (37.88)		1.642 (41.70)	1.426 (36.22)	1.200 (30.48)	50		71661-2950
1.241 (31.53)		1.392 (35.35)	1.176 (29.87)	.950 (24.13)	40		
.991 (25.18)		1.142 (29.00)	.925 (23.52)	.700 (17.78)	30		71661-2930

<b>SEE SHEET 1</b> EIC NO: UICP2009-1254 2008/12/19 DRWN:SBARRA 2009/01/06 CHK:BBARKER 2009/01/06 APPR:SMILLER 2009/01/06 REV DESCRIPTION	QUALITY SYMBOLS ▽=0 ▽=0		GENERAL TOLERANCES (UNLESS SPECIFIED) DIMENSION STYLE IN/MM		SCALE INCH		DESIGN UNITS INCH		THIRD ANGLE PROJECTION	
	4 PLACES ±--- ±--- 3 PLACES ±--- ±.010 2 PLACES ±0.25 ±--- 1 PLACE ±--- ±---		DRAWN BY RKADAMS DATE 2004/08/18		CHECKED BY BBARKER DATE 2004/08/18		APPROVED BY SMILLER DATE 2004/08/18		TITLE SALES ASSEMBLY EBBI 50D RIGHT ANGLE PLUG CONNECTOR	
	DRAFT WHERE APPLICABLE MUST REMAIN WITHIN DIMENSIONS		MATERIAL NO. SEE TABLE		DOCUMENT NO. SD-71661-007		MOLEX INCORPORATED		SHEET NO. 2 OF 2	
	THIS DRAWING CONTAINS INFORMATION THAT IS PROPRIETARY TO MOLEX INCORPORATED AND SHOULD NOT BE USED WITHOUT WRITTEN PERMISSION									

20 19 18 17 16 15 14 13 12 11 10 9 8 7 6 5 4 3 2 1



RECOMMENDED PC BOARD LAYOUT  
COMPONENT SIDE

CIRCUIT SIZES 30, 50, 130 ONLY

TRAY PACK  
PER SPEC.  
PK-10873-084+  
END DETAIL  
OPTION 'A'

.125 (3.18)	3.491 (88.68)	3.642 (92.50)	3.426 (87.02)	3.200 (81.28)	130	
	3.241 (82.33)	3.392 (86.15)	3.176 (80.67)	2.950 (74.93)	120	
	2.741 (69.63)	2.892 (73.45)	2.676 (67.97)	2.450 (62.23)	100	
	2.241 (56.93)	2.392 (60.75)	2.176 (55.27)	1.950 (49.53)	80	
	1.941 (49.31)	2.092 (53.13)	1.875 (47.65)	1.650 (41.91)	68	
	1.741 (44.23)	1.892 (48.05)	1.676 (42.57)	1.450 (36.83)	60	71661-2936
	1.491 (37.88)	1.642 (41.70)	1.426 (36.22)	1.200 (30.48)	50	
	1.241 (31.53)	1.392 (35.35)	1.176 (29.87)	.950 (24.13)	40	
	.991 (25.18)	1.142 (29.00)	.925 (23.52)	.700 (17.78)	30	
	.110 (2.79)	3.491 (88.68)	3.642 (92.50)	3.426 (87.02)	3.200 (81.28)	130
3.241 (82.33)		3.392 (86.15)	3.176 (80.67)	2.950 (74.93)	120	
2.741 (69.63)		2.892 (73.45)	2.676 (67.97)	2.450 (62.23)	100	71661-2910
2.241 (56.93)		2.392 (60.75)	2.176 (55.27)	1.950 (49.53)	80	71661-2980
1.941 (49.31)		2.092 (53.13)	1.875 (47.65)	1.650 (41.91)	68	71661-2968
1.741 (44.23)		1.892 (48.05)	1.676 (42.57)	1.450 (36.83)	60	71661-2960
1.491 (37.88)		1.642 (41.70)	1.426 (36.22)	1.200 (30.48)	50	71661-2950
1.241 (31.53)		1.392 (35.35)	1.176 (29.87)	.950 (24.13)	40	
.991 (25.18)		1.142 (29.00)	.925 (23.52)	.700 (17.78)	30	71661-2930

E	D	C	B	A	CKT ('N')	ITEM NUMBER
---	---	---	---	---	-----------	-------------

ADD 71661-2960 EC NO: UCP2008-047 DRWN:SBARRA 2007/08/29 CHK:CBARKER 2007/09/14 APPR:SMILLER 2007/09/14	QUALITY SYMBOLS 	GENERAL TOLERANCES (UNLESS SPECIFIED)		DIMENSION STYLE IN/MM		SCALE	DESIGN UNITS	THIRD ANGLE PROJECTION		
						---	INCH			
		DRAWN BY		DATE		TITLE				
		RKADAMS		08/18/2004		SALES ASSEMBLY				
CHECKED BY		DATE		ECCI 50D RIGHT ANGLE						
BBARKER		08/18/2004		PLUG CONNECTOR						
APPROVED BY		DATE		MOLEX INCORPORATED						
SMILLER		08/18/2004		MATERIAL NO.		DOCUMENT NO.				
				SEE TABLE		SD-71661-007				
DRAFT WHERE APPLICABLE MUST REMAIN WITHIN DIMENSIONS		SIZE D		THIS DRAWING CONTAINS INFORMATION THAT IS PROPRIETARY TO MOLEX INCORPORATED AND SHOULD NOT BE USED WITHOUT WRITTEN PERMISSION						