



Chipsmall Limited consists of a professional team with an average of over 10 year of expertise in the distribution of electronic components. Based in Hongkong, we have already established firm and mutual-benefit business relationships with customers from,Europe,America and south Asia,supplying obsolete and hard-to-find components to meet their specific needs.

With the principle of “Quality Parts,Customers Priority,Honest Operation,and Considerate Service”,our business mainly focus on the distribution of electronic components. Line cards we deal with include Microchip,ALPS,ROHM,Xilinx,Pulse,ON,Everlight and Freescale. Main products comprise IC,Modules,Potentiometer,IC Socket,Relay,Connector.Our parts cover such applications as commercial,industrial, and automotives areas.

We are looking forward to setting up business relationship with you and hope to provide you with the best service and solution. Let us make a better world for our industry!



Contact us

Tel: +86-755-8981 8866 Fax: +86-755-8427 6832

Email & Skype: info@chipsmall.com Web: www.chipsmall.com

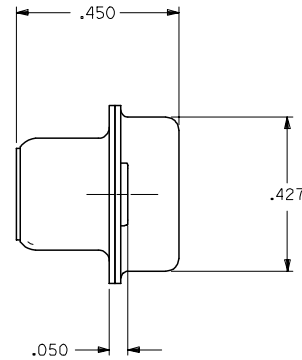
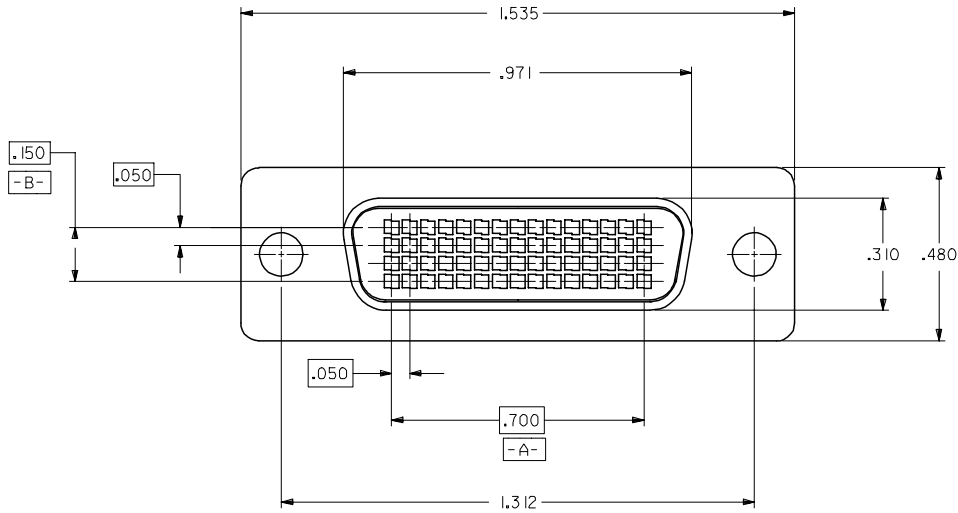
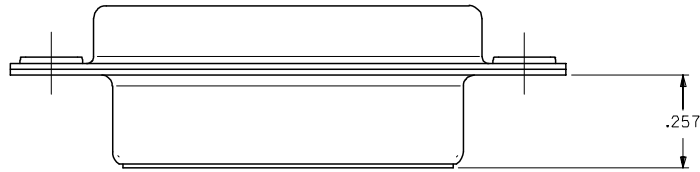
Address: A1208, Overseas Decoration Building, #122 Zhenhua RD., Futian, Shenzhen, China



PART NUMBER	PRODUCT DESCRIPTION	FRONT SHELL PLATING
71691-0003	60ckt I/O RECEPTACLE CONNECTOR SUB-ASSEMBLY	BRIGHT TIN
71691-9003	60ckt I/O RECEPTACLE CONNECTOR SUB-ASSEMBLY	BRIGHT NICKEL

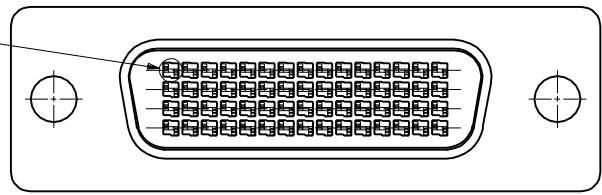
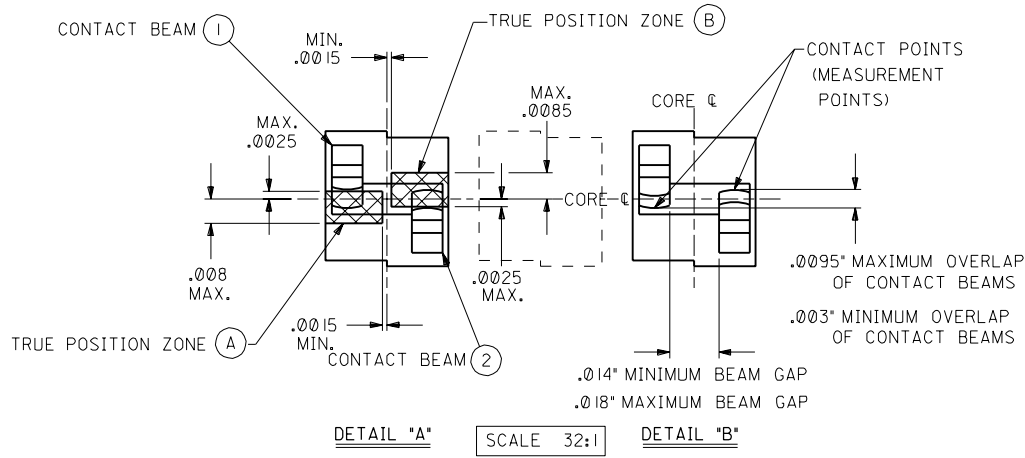
NOTES:

- DAMAGE OF THE CONTACT FINGERS DURING THE ASSEMBLY OPERATION IS UNACCEPTABLE. CORRECT ALIGNMENT OF THE TERMINAL STRIP ASSEMBLIES, PRIOR TO AND DURING ASSEMBLY IS NECESSARY TO AVOID DAMAGE.
- PLASTIC HOUSING:
GLASS FILLED LCP (LIQUID CRYSTAL POLYMER), UL 94 V-0, COLOR: BLACK.
- FRONT SHELL:
DEEP DRAWN STEEL, .016" THICK;
PLATING: SEE TABLE
BRIGHT TIN: 150-250 MICROINCHES BRIGHT TIN OVER 50-150 MICROINCHES NICKEL OVER COPPER FLASH OVERALL (OPTIONAL).
BRIGHT NICKEL: 100-175 MICROINCHES BRIGHT NICKEL OVER 50 MICROINCHES MAXIMUM COPPER OVERALL.
- BACK SHELL:
DEEP DRAWN STEEL, .016" THICK;
PLATING: 150-250 MICROINCHES BRIGHT TIN OVER 50-150 MICROINCHES NICKEL OVER COPPER FLASH OVERALL (OPTIONAL).
- THIS PRODUCT CONFORMS TO PRODUCT SPECIFICATION PS-70928.
- INSERT-MOLDED TERMINAL STRIP ASSEMBLIES ARE SUPPLIED SEPARATELY (SEE SHEET 2 FOR ORDERING INFORMATION).
- PACKAGING SPECIFICATION PK-70873-0236 APPLIES.



2	A
1	C
SHT	REV

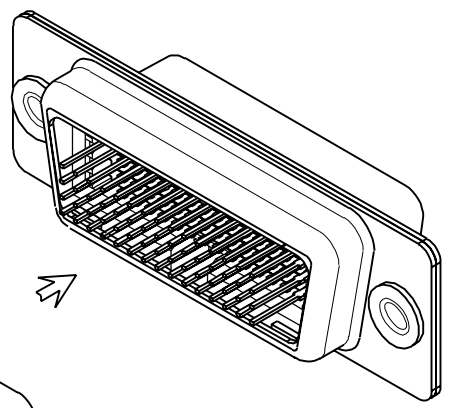
ADD 71691-9003 EC NO: UCP2006-0666 DRAWN BY: BARRA 2006/02/06 CHKD: MORGAN 2006/02/07 APPR: MILLER 2006/02/09	QUALITY SYMBOLS ▽=0 ▽=0	GENERAL TOLERANCES (UNLESS SPECIFIED)		DIMENSION STYLE INCH ONLY		SCALE 4:1	DESIGN UNITS INCH	THIRD ANGLE PROJECTION			
		4 PLACES ± --- ± ---	mm INCH	DRAWN BY SCHMIDGALL	DATE 93/08/04	TITLE .050 PITCH LFH 60 CKT I/O SALES ASSEMBLY					
		3 PLACES ± --- ± ---		CHECKED BY OSULLIVAN	DATE 93/08/04	Molex MOLEX INCORPORATED					
		2 PLACES ± --- ± ---		APPROVED BY BIXLER	DATE 93/08/04	MATERIAL NO. SDA-71691-0003					
1 PLACE ± --- ± ---		ANGULAR ±1/2°		SEE TABLE		DOCUMENT NO.		SHEET NO.			
DRAFT WHERE APPLICABLE MUST REMAIN WITHIN DIMENSIONS				SIZE C		THIS DRAWING CONTAINS INFORMATION THAT IS PROPRIETARY TO MOLEX INCORPORATED AND SHOULD NOT BE USED WITHOUT WRITTEN PERMISSION					



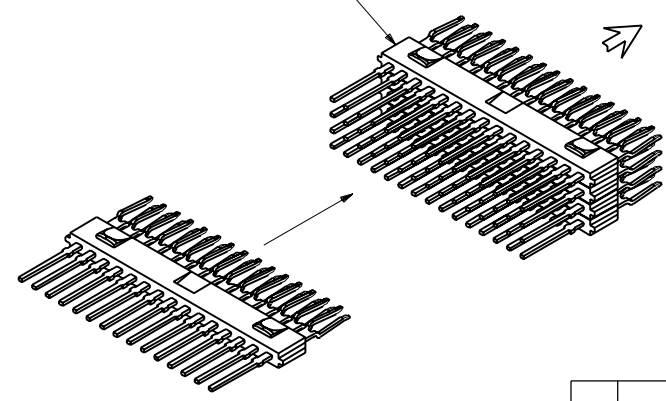
CONTACT TRUE POSITION REQUIREMENTS

- * CONTACT BEAM (1) MAY BE LOCATED ANYWHERE WITHIN THE BOUNDARIES OF TRUE POSITION ZONE (A) PROVIDED THAT THE CONDITIONS OF DETAIL "B" ARE MET.
- * CONTACT BEAM (2) MAY BE LOCATED ANYWHERE WITHIN THE BOUNDARIES OF TRUE POSITION ZONE (B) PROVIDED THAT THE CONDITIONS OF DETAIL "B" ARE MET.

NOTE: ALL TRUE POSITION MEASUREMENTS TO BE TAKEN AT CONTACT POINTS, NOT AT CONTACT TIPS. ALL TRUE POSITION ZONES ARE TO BE DEFINED RELATIVE TO THE HOUSING CORE CENTERLINES.



STEP 1.
STACK 4 STRIP ASSEMBLIES
AS SHOWN



STEP 2.
AFTER TERMINATION, ASSEMBLE
THE STACKED STRIP ASSEMBLIES
INTO THE CONNECTOR HOUSING,
ENSURING THAT THE LATCHES ARE
CORRECTLY ORIENTATED AND SEATED.

INSERT-MOLDED TERMINAL STICKS
FOUR REQUIRED PER ASSEMBLY
(SEE SALES DRAWING: SDA-70985-100*)

DIMENSIONS SHOWN (METRIC) INCH UNLESS OTHERWISE SPECIFIED TOLERANCES: ANGULAR ± 1/2°		▽ = 0 ▼ = 0		REVISE ONLY ON CAD SYSTEM													
<table border="1"> <tr> <th></th> <th>INCH</th> <th>METRIC</th> </tr> <tr> <td>3 PLACE</td> <td>± ---</td> <td>---</td> </tr> <tr> <td>2 PLACE</td> <td>± ---</td> <td>± ---</td> </tr> <tr> <td>1 PLACE</td> <td>---</td> <td>± ---</td> </tr> </table>			INCH	METRIC	3 PLACE	± ---	---	2 PLACE	± ---	± ---	1 PLACE	---	± ---	TITLE .050" PITCH LFH 60 ct I/O SALES ASSEMBLY		SHEET NO. 2 DATE 08/04/93	
	INCH	METRIC															
3 PLACE	± ---	---															
2 PLACE	± ---	± ---															
1 PLACE	---	± ---															
DRAFT WHERE APPLICABLE MUST REMAIN WITHIN DIMENSIONS		PART NO. SDA-71691-0003 DRWG. NO.		MFG. SH. REV.													
DWG. BY SCHMIDGALL APP'D BY BIXLER		CHK'D BY OSULLIVAN SCALE 4:1		FILE NAME: S71691X2.DWG. THIS DRAWING CONTAINS INFORMATION THAT IS PROPRIETARY TO MOLEX INC. AND SHOULD NOT BE USED WITHOUT WRITTEN PERMISSION.													
LTR.	REVISIONS	LTR.	REVISIONS	A	SEE SHEET 1												