



Chipsmall Limited consists of a professional team with an average of over 10 year of expertise in the distribution of electronic components. Based in Hongkong, we have already established firm and mutual-benefit business relationships with customers from,Europe,America and south Asia,supplying obsolete and hard-to-find components to meet their specific needs.

With the principle of “Quality Parts,Customers Priority,Honest Operation,and Considerate Service”,our business mainly focus on the distribution of electronic components. Line cards we deal with include Microchip,ALPS,ROHM,Xilinx,Pulse,ON,Everlight and Freescale. Main products comprise IC,Modules,Potentiometer,IC Socket,Relay,Connector.Our parts cover such applications as commercial,industrial, and automotives areas.

We are looking forward to setting up business relationship with you and hope to provide you with the best service and solution. Let us make a better world for our industry!



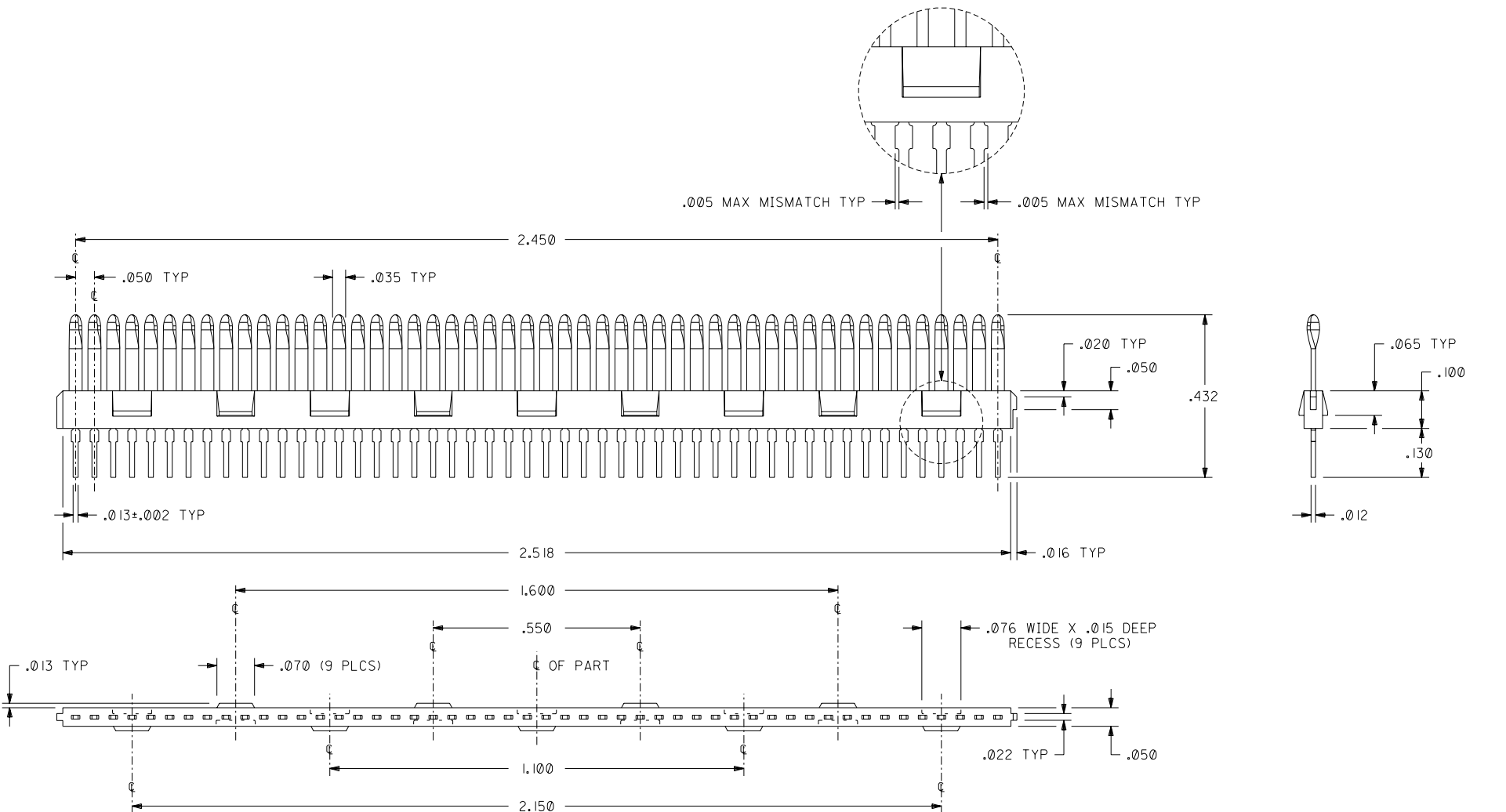
Contact us

Tel: +86-755-8981 8866 Fax: +86-755-8427 6832

Email & Skype: info@chipsmall.com Web: www.chipsmall.com

Address: A1208, Overseas Decoration Building, #122 Zhenhua RD., Futian, Shenzhen, China





- NOTES:
- MATERIALS:
INSULATOR IS GLASS FILLED LCP (LIQUID CRYSTAL POLYMER), U.L. 94 V-0, COLOR: BLACK;
TERMINALS ARE A PHOSPHOR BRONZE ALLOY, .012" THICK.
 - TERMINAL PLATING:
30 MICROINCHES/(0.762 MICROMETERS) MINIMUM GOLD IN SELECT AREA;
100 MICROINCHES/(2.54 MICROMETERS) MINIMUM TIN IN SELECTE AREA;
OVER NICKEL UNDERPLATE OVERALL.
 - PARTS USED IN CONJUNCTION WITH MOLEX PRODUCT SPECIFICATION #PS-71719-9999.
 - PACKAGING PER MOLEX SPECIFICATION #PK-70873-0252.
 - PARTS CONFORM TO MOLEX APPLICATION SPECIFICATION #AS-71715-9999.

NOTE FOR LEAD FREE CONVERSION:
THE PRIMARY SHIPPING CARTON WILL BE
LABELED "COMPLIANT TO RoHS DIRECTIVE
2002/95/EC AND ELV ANNEX II OF
DIRECTIVE 2000/53/EC". CARTONS
WITHOUT THIS LABEL MAY CONTAIN
PRODUCT WITH LEAD.

L.T.R.		REVISIONS		L.T.R.		REVISIONS		DIMENSIONS SHOWN <input type="checkbox"/> INCH <input checked="" type="checkbox"/> METRIC UNLESS OTHERWISE SPECIFIED TOLERANCES: ANGULAR ± 1/2° 3 PLACE ± .010 --- 2 PLACE ± --- ± --- 1 PLACE --- ± --- DRAFT WHERE APPLICABLE MUST REMAIN WITHIN DIMENSIONS DRWG. BY: GLT APP'D. BY: GWF CHK'D. BY: GLT SCALE: 5:1		MFG. SH. REV. TITLE: .050" PITCH LFH, 50 CKT. MALE INSERT-MOLDED CONTACT STRIP, SALES DETAIL MOLEX INCORPORATED LITSE, ILL. 60532 U.S.A. SHEET NO. 1 OF 1 DATE 09/06/95 PART NO. 71715-4002 DRWG. NO. SDA-71715-4002 FILE NAME: S7171503.DGN THIS DRAWING CONTAINS INFORMATION THAT IS PROPRIETARY TO MOLEX INC. AND SHOULD NOT BE USED WITHOUT WRITTEN PERMISSION.	
--------	--	-----------	--	--------	--	-----------	--	---	--	--	--