



Chipsmall Limited consists of a professional team with an average of over 10 year of expertise in the distribution of electronic components. Based in Hongkong, we have already established firm and mutual-benefit business relationships with customers from,Europe,America and south Asia,supplying obsolete and hard-to-find components to meet their specific needs.

With the principle of “Quality Parts,Customers Priority,Honest Operation,and Considerate Service”,our business mainly focus on the distribution of electronic components. Line cards we deal with include Microchip,ALPS,ROHM,Xilinx,Pulse,ON,Everlight and Freescale. Main products comprise IC,Modules,Potentiometer,IC Socket,Relay,Connector.Our parts cover such applications as commercial,industrial, and automotives areas.

We are looking forward to setting up business relationship with you and hope to provide you with the best service and solution. Let us make a better world for our industry!



Contact us

Tel: +86-755-8981 8866 Fax: +86-755-8427 6832

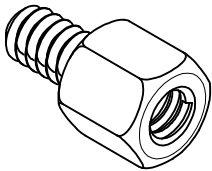
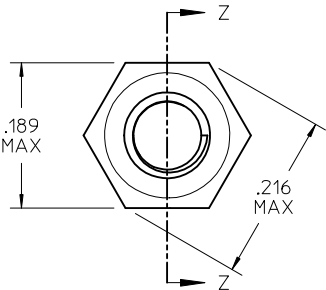
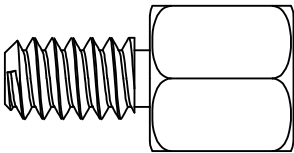
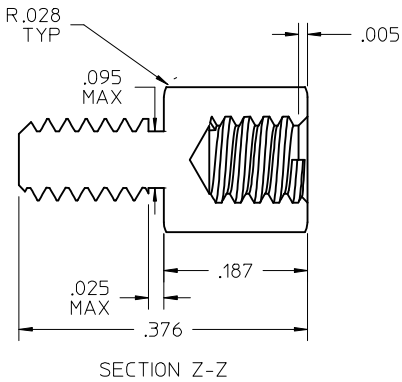
Email & Skype: info@chipsmall.com Web: www.chipsmall.com

Address: A1208, Overseas Decoration Building, #122 Zhenhua RD., Futian, Shenzhen, China

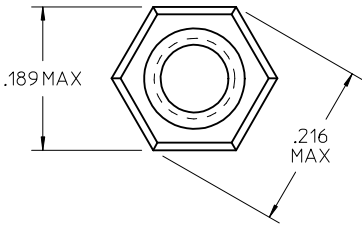
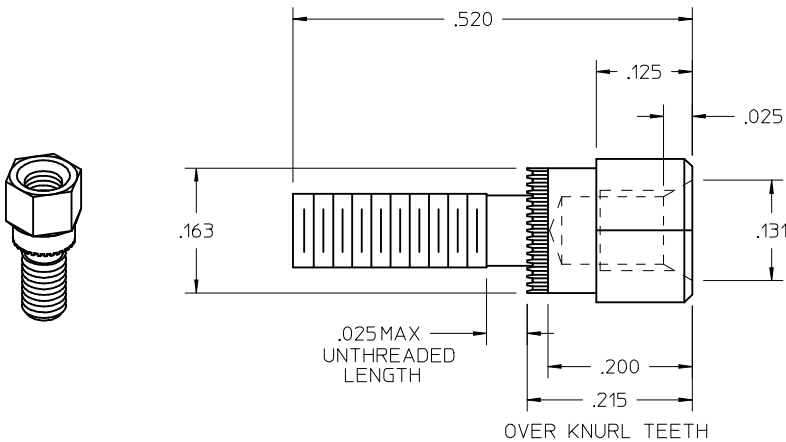


ITEM NUMBER	INTERNAL THREAD	EXTERNAL THREAD	MATERIAL
71781-1000	#4-40 UNC-2B	#4-40 UNC-2A	STAINLESS STEEL 303
71781-2000	#4-40 UNC-2B	#4-40 UNC-2A	STAINLESS STEEL 303


NOTES:
1. PARTS TO BE BULK PACKAGED IN BAGS OF 1,000.



71781-1000



71781-2000
(SELF CLINCHING STYLE)

MANAGE VIEWS EC NO: UCP2015-3736 DRWN: TIBARRA CHKD: MCAN APPR: SMILLER B	2015/03/12 2015/05/05 2015/05/13	DESCRIPTION	QUALITY SYMBOLS ▽=0 ▽=0 ▽=0	GENERAL TOLERANCES (UNLESS SPECIFIED)		DIMENSION STYLE INCH ONLY		SCALE 8:1	DESIGN UNITS INCH	 THIRD ANGLE PROJECTION	TITLE 3/16 HEX JACKPOSTS INT/EXT #4-40 THREAD molex					
					mm	INCH	DRAWN BY TIBARRA	DATE 2014/08/01	SD-71781-1000							
				4 PLACES	± ---	± ---	CHECKED BY MPOFF	DATE 2014/08/29								
				3 PLACES	± ---	± .005	APPROVED BY SMILLER	DATE 2014/09/04								
				2 PLACES	± ---	± ---	MATERIAL NO.					DOCUMENT NO.		SHEET NO. 1 OF 1		
				1 PLACE	± ---	± ---										
				0 PLACE	±	±	SEE TABLE		THIS DRAWING CONTAINS INFORMATION THAT IS PROPRIETARY TO MOLEX INCORPORATED AND SHOULD NOT BE USED WITHOUT WRITTEN PERMISSION							
				ANGULAR ±1/2°		SIZE C										
				DRAFT WHERE APPLICABLE MUST REMAIN WITHIN DIMENSIONS												