



Chipsmall Limited consists of a professional team with an average of over 10 year of expertise in the distribution of electronic components. Based in Hongkong, we have already established firm and mutual-benefit business relationships with customers from,Europe,America and south Asia,supplying obsolete and hard-to-find components to meet their specific needs.

With the principle of “Quality Parts,Customers Priority,Honest Operation,and Considerate Service”,our business mainly focus on the distribution of electronic components. Line cards we deal with include Microchip,ALPS,ROHM,Xilinx,Pulse,ON,Everlight and Freescale. Main products comprise IC,Modules,Potentiometer,IC Socket,Relay,Connector.Our parts cover such applications as commercial,industrial, and automotives areas.

We are looking forward to setting up business relationship with you and hope to provide you with the best service and solution. Let us make a better world for our industry!



Contact us

Tel: +86-755-8981 8866 Fax: +86-755-8427 6832

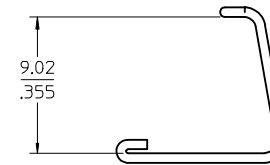
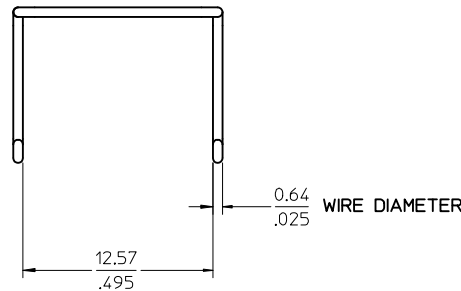
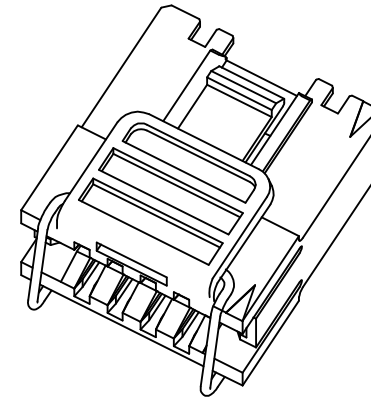
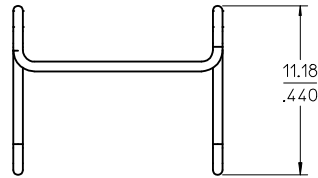
Email & Skype: info@chipsmall.com Web: www.chipsmall.com

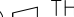

Address: A1208, Overseas Decoration Building, #122 Zhenhua RD., Futian, Shenzhen, China



NOTES:

- 1) MATERIAL: .025 DIAMETER STAINLESS STEEL.
2) SPRING CLIP TO BE USED WITH 70013-**** INTERIM CLIP
CIRCUIT SIZES 8-50.



EC NO: UCP2004-0539 DRWN:DMORGAN 2004/03/22 CHKD:BBARKER 2004/03/22 APPR:SMILLER 2004/04/01	DESCRIPTION	QUALITY SYMBOLS	GENERAL TOLERANCES (UNLESS SPECIFIED)			SCALE 4:1	DESIGN UNITS INCH	 THIRD ANGLE PROJECTION		REVISE ON CAD ONLY				
						DIMENSION STYLE		TITLE SPRING CLIP FOR INTERIM CLIPS CIRCUIT SIZES 8-50.						
						MM/IN								
						DRAWN BY		DATE		MOLEX INCORPORATED				
						DMORGAN		03/09/17						
				CHECKED BY		DATE		 MOLEX INCORPORATED						
				BBARKER		03/09/17								
				APPROVED BY		DATE		MATERIAL NO.		DOCUMENT NO.		SHEET NO.		
				SMILLER		03/09/17		71809-0001		SD-71809-001		1 OF 1		
				THIS DRAWING CONTAINS INFORMATION THAT IS PROPRIETARY TO MOLEX INCORPORATED AND SHOULD NOT BE USED WITHOUT WRITTEN PERMISSION									C	