



Chipsmall Limited consists of a professional team with an average of over 10 year of expertise in the distribution of electronic components. Based in Hongkong, we have already established firm and mutual-benefit business relationships with customers from,Europe,America and south Asia,supplying obsolete and hard-to-find components to meet their specific needs.

With the principle of “Quality Parts,Customers Priority,Honest Operation,and Considerate Service”,our business mainly focus on the distribution of electronic components. Line cards we deal with include Microchip,ALPS,ROHM,Xilinx,Pulse,ON,Everlight and Freescale. Main products comprise IC,Modules,Potentiometer,IC Socket,Relay,Connector.Our parts cover such applications as commercial,industrial, and automotives areas.

We are looking forward to setting up business relationship with you and hope to provide you with the best service and solution. Let us make a better world for our industry!



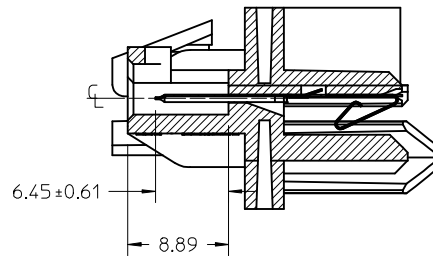
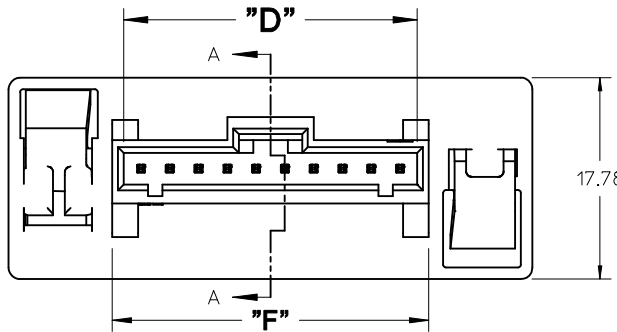
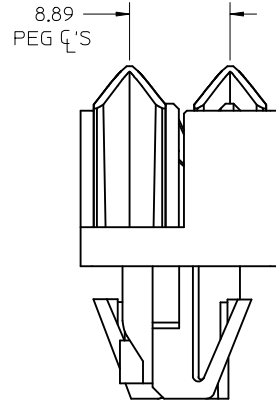
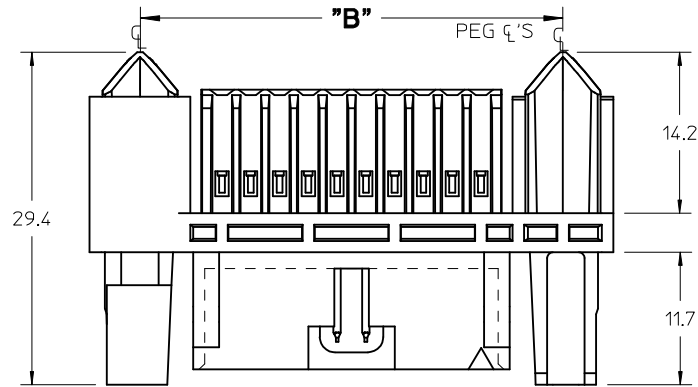
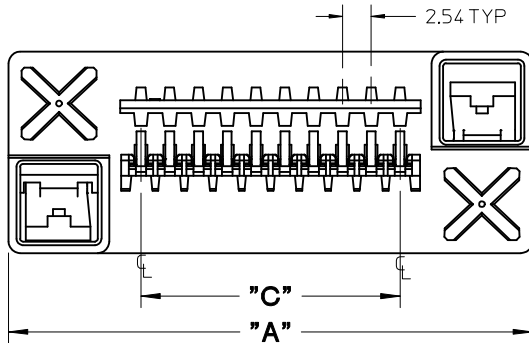
## Contact us

Tel: +86-755-8981 8866 Fax: +86-755-8427 6832

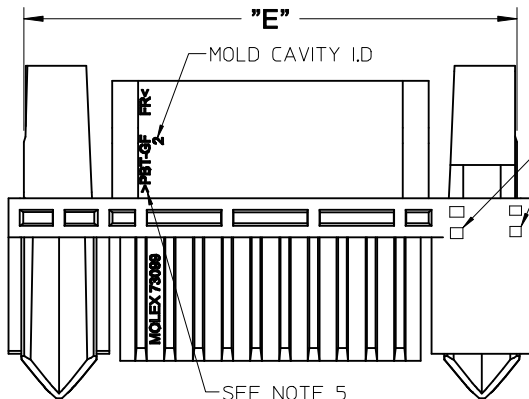
Email & Skype: info@chipsmall.com Web: www.chipsmall.com

Address: A1208, Overseas Decoration Building, #122 Zhenhua RD., Futian, Shenzhen, China





SECTION A-A



DATE CODE  
SEE NOTE 4

NOTES:

1. MATERIAL:  
HOUSING: GLASS FILLED POLYESTER UL 94V-0, COLOR BLACK.  
TERMINAL: BERYLLIUM COPPER
2. PLATING:  
1.27 MICROMETER MINIMUM GOLD PLATE ON CANTILEVER AREA,  
0.38 MICROMETER MINIMUM GOLD PLATE ON SELECT SL TAIL AREA  
NICKEL PLATE OVER ALL.
3. PRODUCT CONFORMS TO PS-73099-\*\*\*\*.
4. HOT STAMP DATE CODE IS WEEK, YEAR.
5. RECYCLING LOGO TO APPEAR WHERE ROOM IS AVAILABLE.
6. SEE SHEET 2 FOR PANEL MOUNTING AND MATING DETAILS.
7. 73099-\*\*\*\* CONNECTOR ALSO MATES WITH \*SL\* SERIES 70066,  
70400 AND 70430.
8. PACKAGING SPECIFICATION PK-70873-1000

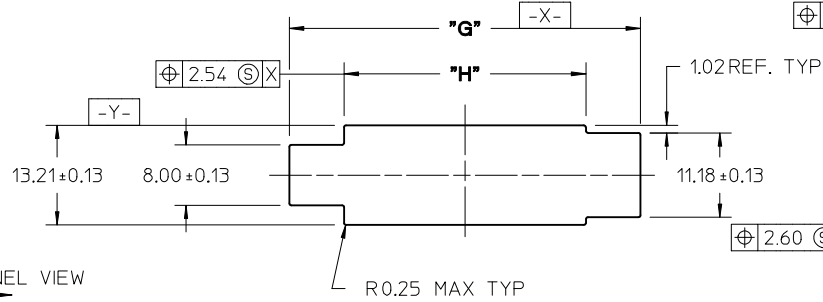
| PART NUMBERS | CKT. SIZE | DIM. "A" | DIM. "B" | DIM. "C" | DIM. "D" | DIM. "E" | DIM. "F" |
|--------------|-----------|----------|----------|----------|----------|----------|----------|
| 73099-3004   | 04        | 30.99    | 22.10    | 7.62     | 10.67    | 28.27    | 12.70    |
| 73099-3005   | 05        | 33.53    | 24.64    | 10.16    | 13.21    | 30.81    | 15.24    |
| 73099-3006   | 06        | 36.07    | 27.18    | 12.70    | 15.75    | 33.35    | 17.78    |
| 73099-3007   | 07        | 38.61    | 29.72    | 15.24    | 18.29    | 35.89    | 20.32    |
| 73099-3008   | 08        | 41.15    | 32.26    | 17.78    | 20.83    | 38.43    | 22.86    |
| 73099-3009   | 09        | 43.67    | 34.80    | 20.32    | 23.37    | 40.97    | 25.40    |
| 73099-3010   | 10        | 46.23    | 37.74    | 22.86    | 25.91    | 43.51    | 27.94    |
| 73099-3011   | 11        | 48.77    | 39.89    | 25.40    | 28.45    | 46.05    | 30.48    |
| 73099-3012   | 12        | 51.31    | 42.42    | 27.94    | 30.99    | 48.59    | 33.02    |

|   |                                      |  |                      |                                   |   |  |                        |                        |  |
|---|--------------------------------------|--|----------------------|-----------------------------------|---|--|------------------------|------------------------|--|
| FIX TYPO TO MATCH TOOLING<br>EC NO: UCP2016-2384<br>DRWNSVANG01 2015/12/11<br>CHKDKACAN 2015/12/11<br>APPR:SMILLER 2015/12/18 | QUALITY SYMBOLS<br>∇=0<br>∇=0<br>∇=0 | GENERAL TOLERANCES (UNLESS SPECIFIED)                |                      | DIMENSION STYLE<br><b>MM ONLY</b> |   | SCALE<br>3:1   | DESIGN UNITS<br>METRIC | THIRD ANGLE PROJECTION |  |
|   |                                      | 4 PLACES ± --- ± ---                                 | 3 PLACES ± --- ± --- | DRAWN BY<br>GES                   | DATE<br>2015/02/18  | TITLE<br><b>CYCLONE "SL" DRAWER CONNECTOR SALES ASSEMBLY</b> |                        |                        |  |
|   |                                      | 2 PLACES ± 0.25 ± ---                                | 1 PLACE ± 0.38 ± --- | CHECKED BY<br>MCAIN               | DATE<br>2015/02/20  | DOCUMENT NO.<br><b>SD-73099-3000</b>                         |                        |                        |  |
|   |                                      | 0 PLACE ± --- ± ---                                  | ANGULAR ±1/2°        | APPROVED BY<br>SMILLER            | DATE<br>2015/03/10  | SHEET NO.<br>1 OF 2  |                        |                        |  |
| D   | REV                                  | DRAFT WHERE APPLICABLE MUST REMAIN WITHIN DIMENSIONS |                      | MATERIAL NO.<br>SEE TABLE         | THIS DRAWING CONTAINS INFORMATION THAT IS PROPRIETARY TO MOLEX INCORPORATED AND SHOULD NOT BE USED WITHOUT WRITTEN PERMISSION |  |                        |                        |  |

| PANEL DIMENSIONS |          |          |          |
|------------------|----------|----------|----------|
| CKT. SIZE        | DIM. "G" | DIM. "H" | DIM. "I" |
| 04               | 31.24    | 16.76    | 28.65    |
| 05               | 33.78    | 19.30    | 31.19    |
| 06               | 36.32    | 21.84    | 33.73    |
| 07               | 38.86    | 24.38    | 36.27    |
| 08               | 41.40    | 26.92    | 38.81    |
| 09               | 43.94    | 29.46    | 41.35    |
| 10               | 46.48    | 32.00    | 43.89    |
| 11               | 49.02    | 34.54    | 46.43    |
| 12               | 51.56    | 37.08    | 48.97    |

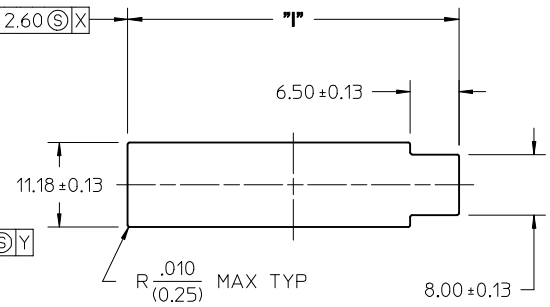
### FLOATING PANEL VIEW

VIEW FROM PUNCH SIDE  
(SCALE 2:1)



### NON-FLOATING PANEL VIEW

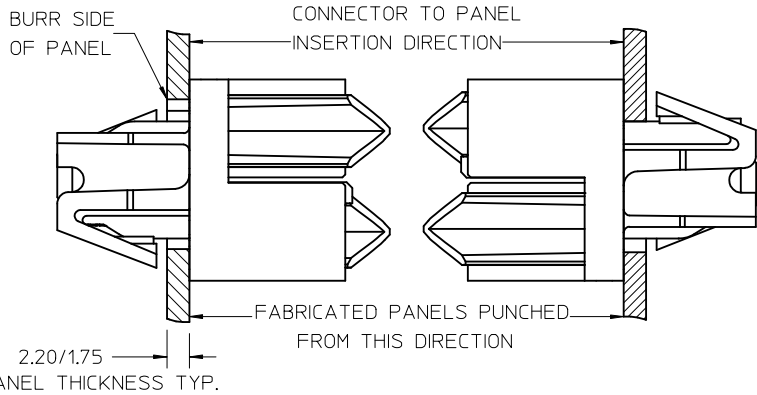
VIEW FROM PUNCH SIDE  
(SCALE 2:1)



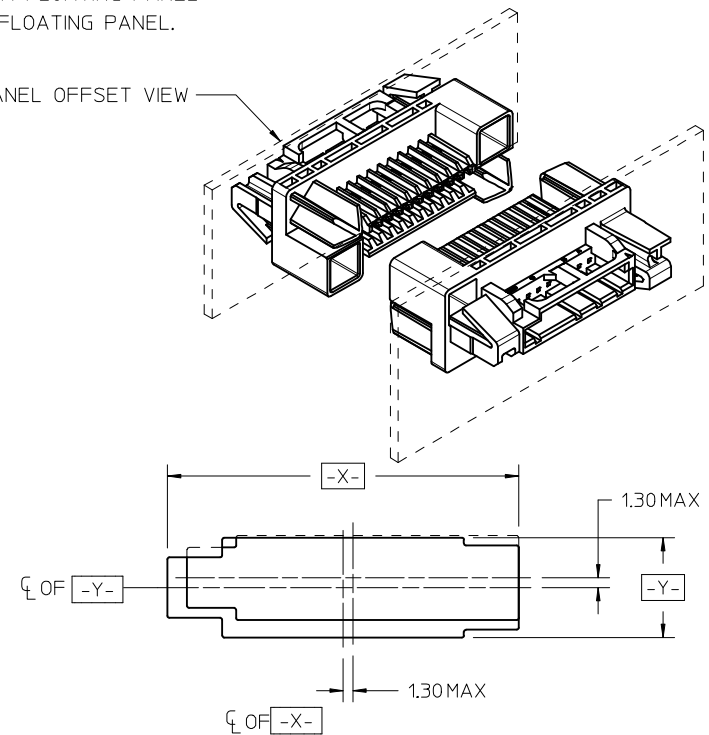
NOTE: MATING SYSTEM MUST USE A FLOATING PANEL IN CONJUNCTION WITH A NON FLOATING PANEL.

### FLOAT PANEL VIEW

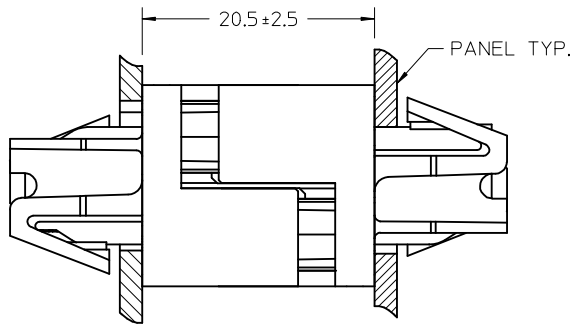
### NON - FLOAT PANEL VIEW



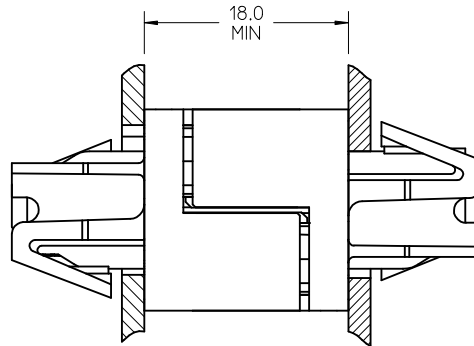
### PANEL OFFSET VIEW



PANEL OFFSET ±1.30 MM MAX  
PANEL OFFSET VIEW



OPERATING PANEL  
CLOSURE DIMENSIONS



FULLY CLOSED CONNECTOR

| <b>SEE SHEET 1</b><br>EC NO: UCP2016-2384<br>DRWNSVANG01 2015/12/11<br>CHKD:MCAIN 2015/12/11<br>APPR:SMILLER 2015/12/18<br>REV | QUALITY SYMBOLS<br>∇=0<br>∇=0<br>∇=0 | GENERAL TOLERANCES (UNLESS SPECIFIED)<br><table border="1"> <tr><th></th><th>mm</th><th>INCH</th></tr> <tr><td>4 PLACES</td><td>±---</td><td>±---</td></tr> <tr><td>3 PLACES</td><td>±---</td><td>±---</td></tr> <tr><td>2 PLACES</td><td>±0.25</td><td>±---</td></tr> <tr><td>1 PLACE</td><td>±0.38</td><td>±---</td></tr> <tr><td>0 PLACE</td><td>±---</td><td>±---</td></tr> </table> |                            | mm | INCH | 4 PLACES | ±--- | ±--- | 3 PLACES | ±--- | ±--- | 2 PLACES | ±0.25 | ±--- | 1 PLACE | ±0.38 | ±--- | 0 PLACE | ±--- | ±--- | DIMENSION STYLE<br><b>MM ONLY</b><br>DRAWN BY DATE<br>GES 2015/02/18<br>CHECKED BY DATE<br>MCAIN 2015/02/20<br>APPROVED BY DATE<br>SMILLER 2015/03/10 | SCALE<br><b>3:1</b><br>TITLE<br><b>CYCLONE "SL" DRAWER CONNECTOR SALES ASSEMBLY</b> | DESIGN UNITS<br><b>METRIC</b> | THIRD ANGLE PROJECTION |
|--|--------------------------------------|--|----------------------------|----|------|----------|------|------|----------|------|------|----------|-------|------|---------|-------|------|---------|------|------|---|---|-------------------------------|------------------------|
|  |                                      | mm   | INCH                       |    |      |          |      |      |          |      |      |          |       |      |         |       |      |         |      |      |   |   |                               |                        |
|  | 4 PLACES                             | ±---   | ±---                       |    |      |          |      |      |          |      |      |          |       |      |         |       |      |         |      |      |   |   |                               |                        |
|  | 3 PLACES                             | ±---   | ±---                       |    |      |          |      |      |          |      |      |          |       |      |         |       |      |         |      |      |   |   |                               |                        |
| 2 PLACES   | ±0.25                                | ±---   |                            |    |      |          |      |      |          |      |      |          |       |      |         |       |      |         |      |      |   |   |                               |                        |
| 1 PLACE  | ±0.38                                | ±---   |                            |    |      |          |      |      |          |      |      |          |       |      |         |       |      |         |      |      |   |   |                               |                        |
| 0 PLACE  | ±---                                 | ±---   |                            |    |      |          |      |      |          |      |      |          |       |      |         |       |      |         |      |      |   |   |                               |                        |
| ANGULAR ±1/2°<br>DRAFT WHERE APPLICABLE MUST REMAIN WITHIN DIMENSIONS  | MATERIAL NO.<br><b>SEE TABLE</b>     | DOCUMENT NO.<br><b>SD-73099-3000</b>   | SHEET NO.<br><b>2 OF 2</b> |    |      |          |      |      |          |      |      |          |       |      |         |       |      |         |      |      |   |   |                               |                        |
| THIS DRAWING CONTAINS INFORMATION THAT IS PROPRIETARY TO MOLEX INCORPORATED AND SHOULD NOT BE USED WITHOUT WRITTEN PERMISSION  |                                      |  |                            |    |      |          |      |      |          |      |      |          |       |      |         |       |      |         |      |      |   |   |                               |                        |