



Chipsmall Limited consists of a professional team with an average of over 10 year of expertise in the distribution of electronic components. Based in Hongkong, we have already established firm and mutual-benefit business relationships with customers from,Europe,America and south Asia,supplying obsolete and hard-to-find components to meet their specific needs.

With the principle of “Quality Parts,Customers Priority,Honest Operation,and Considerate Service”,our business mainly focus on the distribution of electronic components. Line cards we deal with include Microchip,ALPS,ROHM,Xilinx,Pulse,ON,Everlight and Freescale. Main products comprise IC,Modules,Potentiometer,IC Socket,Relay,Connector.Our parts cover such applications as commercial,industrial, and automotives areas.

We are looking forward to setting up business relationship with you and hope to provide you with the best service and solution. Let us make a better world for our industry!



Contact us

Tel: +86-755-8981 8866 Fax: +86-755-8427 6832

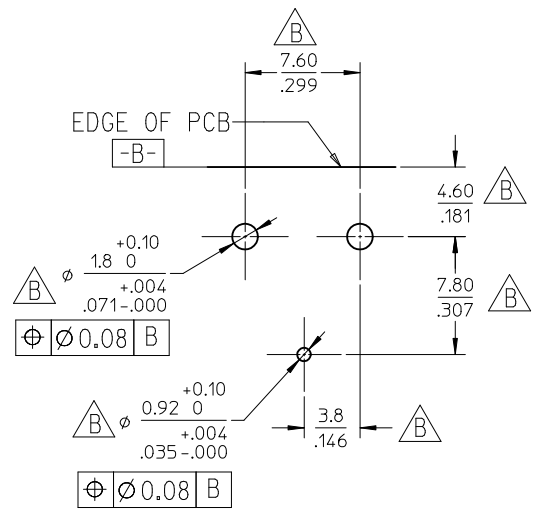
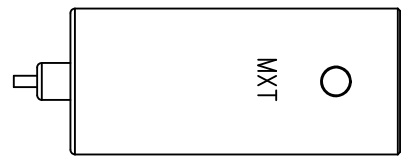
Email & Skype: info@chipsmall.com Web: www.chipsmall.com

Address: A1208, Overseas Decoration Building, #122 Zhenhua RD., Futian, Shenzhen, China

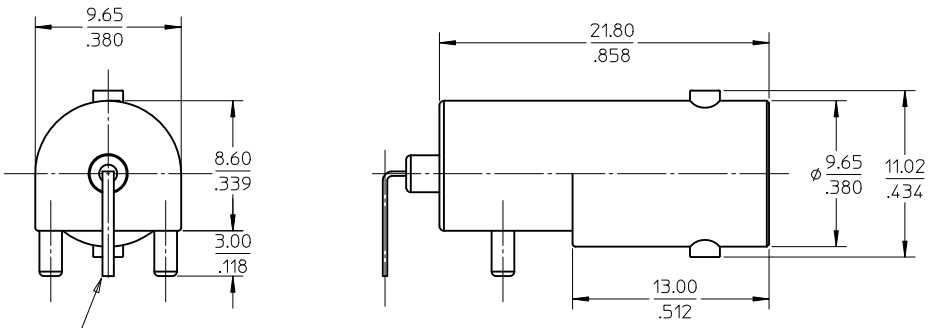


MATERIALES AND FINISHES

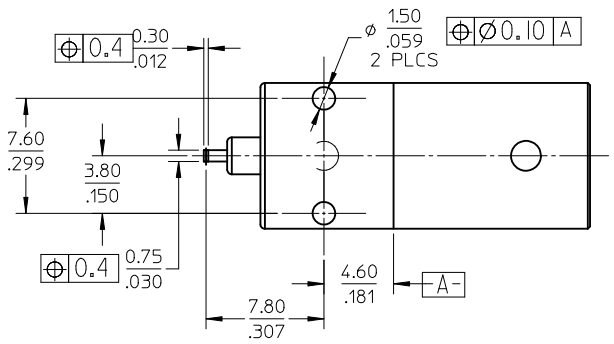
BODY ZINC ALLOY
 PLATED TIN
 CENTER CONTACT PHOSPHOR BRONZE
 PLATED GOLD / TIN
 INSULATOR POLYPROPYLENE



RECOMMENDED PCB PATTERN



THIS LEAD IS FORMED TO FIT
 RECOMMENDED PCB PATTERN
 DURING INSTALLATION



BOTTOM VIEW

73171-4230	ONE PER BAG
73100-0154	TRAY
PART NO.	PACKAGING


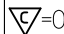
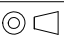

PS-89675-1030	PRODUCT SPECIFICATIONS
SPECIFICATION	DESCRIPTION

CHG: ADD -4230 EC NO: URF2011-0634 DRWN: JWIENER 2011/04/27 CHKD: JSS 2011/04/27 APPR: JWIENER 2011/05/02	QUALITY SYMBOLS ▽=0 ◻=0	GENERAL TOLERANCES (UNLESS SPECIFIED) <table border="1"> <tr> <td></td> <td>mm</td> <td>INCH</td> </tr> <tr> <td>4 PLACES</td> <td>± ---</td> <td>± ---</td> </tr> <tr> <td>3 PLACES</td> <td>± ---</td> <td>± ---</td> </tr> <tr> <td>2 PLACES</td> <td>± 0.25</td> <td>± ---</td> </tr> <tr> <td>1 PLACE</td> <td>± 0.25</td> <td>± ---</td> </tr> <tr> <td colspan="3">ANGULAR ± ---°</td> </tr> </table>		mm	INCH	4 PLACES	± ---	± ---	3 PLACES	± ---	± ---	2 PLACES	± 0.25	± ---	1 PLACE	± 0.25	± ---	ANGULAR ± ---°			DIMENSION STYLE MM/IN	SCALE METRIC	DESIGN UNITS METRIC	THIRD ANGLE PROJECTION
		mm	INCH																					
	4 PLACES	± ---	± ---																					
	3 PLACES	± ---	± ---																					
	2 PLACES	± 0.25	± ---																					
1 PLACE	± 0.25	± ---																						
ANGULAR ± ---°																								
DRAWN BY IRIS WANG	DATE 1994/09/08	TITLE BNC JACK R/A PCB 50 OHM BNC-JPCB																						
CHECKED BY A CHANG	DATE 1994/09/08	MOLEX INCORPORATED																						
APPROVED BY A CHANG	DATE 1994/09/08	MATERIAL NO. SEE TABLE	DOCUMENT NO. SD-73100-0154	SHEET NO. 1 OF 1																				
DRAFT WHERE APPLICABLE MUST REMAIN WITHIN DIMENSIONS	SIZE A3	THIS DRAWING CONTAINS INFORMATION THAT IS PROPRIETARY TO MOLEX INCORPORATED AND SHOULD NOT BE USED WITHOUT WRITTEN PERMISSION																						

MATERIALS AND FINISHES

SEE SD-73100-0154

P/N: 73171-4230: THIS IS P/N: 73100-0154 PLACED IN A SINGLE BAG

CHG: NEW RELEASE EC NO: URF2011-0634 DRWN: JWIENER 2011/04/29 CHKD: SSS 2011/04/29 APPR: JWIENER 2011/05/02	QUALITY SYMBOLS  = 0  = 0	GENERAL TOLERANCES (UNLESS SPECIFIED)		DIMENSION STYLE MM/IN		SCALE	DESIGN UNITS METRIC	 THIRD ANGLE PROJECTION																							
		<table border="1"> <tr> <th></th> <th>mm</th> <th>INCH</th> </tr> <tr> <td>4 PLACES</td> <td>± ---</td> <td>± ---</td> </tr> <tr> <td>3 PLACES</td> <td>± ---</td> <td>± ---</td> </tr> <tr> <td>2 PLACES</td> <td>± ---</td> <td>± ---</td> </tr> <tr> <td>1 PLACE</td> <td>± ---</td> <td>± ---</td> </tr> <tr> <td colspan="3">ANGULAR ± ---°</td> </tr> </table>		mm	INCH	4 PLACES	± ---	± ---	3 PLACES	± ---	± ---	2 PLACES	± ---	± ---	1 PLACE	± ---	± ---	ANGULAR ± ---°			<table border="1"> <tr> <td>DRAWN BY JWIENER</td> <td>DATE 2011/04/29</td> </tr> <tr> <td>CHECKED BY SSS</td> <td>DATE 2011/04/29</td> </tr> <tr> <td>APPROVED BY JWIENER</td> <td>DATE 2011/05/02</td> </tr> </table>	DRAWN BY JWIENER	DATE 2011/04/29	CHECKED BY SSS	DATE 2011/04/29	APPROVED BY JWIENER	DATE 2011/05/02	TITLE BNC JACK R/A PCB THRU-HOLE 50 OHMS BNC-JPCB EWR-N/A		 MOLEX INCORPORATED	
	mm	INCH																													
4 PLACES	± ---	± ---																													
3 PLACES	± ---	± ---																													
2 PLACES	± ---	± ---																													
1 PLACE	± ---	± ---																													
ANGULAR ± ---°																															
DRAWN BY JWIENER	DATE 2011/04/29																														
CHECKED BY SSS	DATE 2011/04/29																														
APPROVED BY JWIENER	DATE 2011/05/02																														
A	REV	DRAFT WHERE APPLICABLE MUST REMAIN WITHIN DIMENSIONS		SIZE C	THIS DRAWING CONTAINS INFORMATION THAT IS PROPRIETARY TO MOLEX INCORPORATED AND SHOULD NOT BE USED WITHOUT WRITTEN PERMISSION																										