



Chipsmall Limited consists of a professional team with an average of over 10 year of expertise in the distribution of electronic components. Based in Hongkong, we have already established firm and mutual-benefit business relationships with customers from,Europe,America and south Asia,supplying obsolete and hard-to-find components to meet their specific needs.

With the principle of "Quality Parts,Customers Priority,Honest Operation,and Considerate Service",our business mainly focus on the distribution of electronic components. Line cards we deal with include Microchip,ALPS,ROHM,Xilinx,Pulse,ON,Everlight and Freescale. Main products comprise IC,Modules,Potentiometer,IC Socket,Relay,Connector.Our parts cover such applications as commercial,industrial, and automotives areas.

We are looking forward to setting up business relationship with you and hope to provide you with the best service and solution. Let us make a better world for our industry!



## Contact us

Tel: +86-755-8981 8866 Fax: +86-755-8427 6832

Email & Skype: info@chipsmall.com Web: www.chipsmall.com

Address: A1208, Overseas Decoration Building, #122 Zhenhua RD., Futian, Shenzhen, China



MATERIALS AND FINISHES

BODY ZINC ALLOY  
PLATED NICKEL

CENTER CONTACT PHOSPHOR BRONZE  
PLATED GOLD

INSULATOR POLYPROPYLENE (94-V0)

MOUNTING POST PHOSPHOR BRONZE  
PLATED TIN

SOLDER TAIL COPPER OVER STEEL  
PLATED TIN

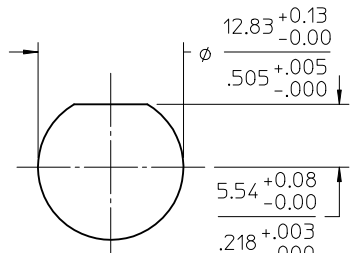
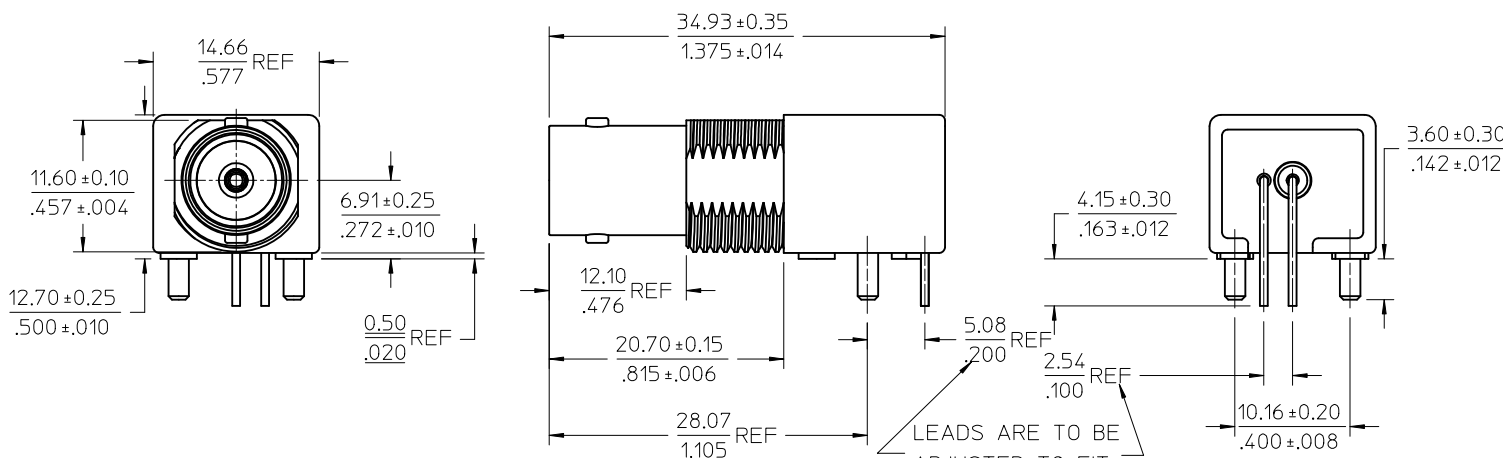
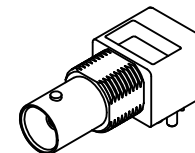
JAM NUT BRASS  
PLATED NICKEL

LOCK WASHER PHOSPHOR BRONZE  
PLATED NICKEL

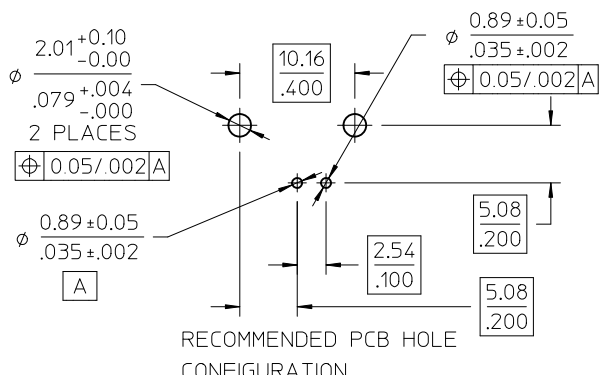
BNC JACK  
75 OHM  
INTERFACE

1/2-28 UNEF-2A

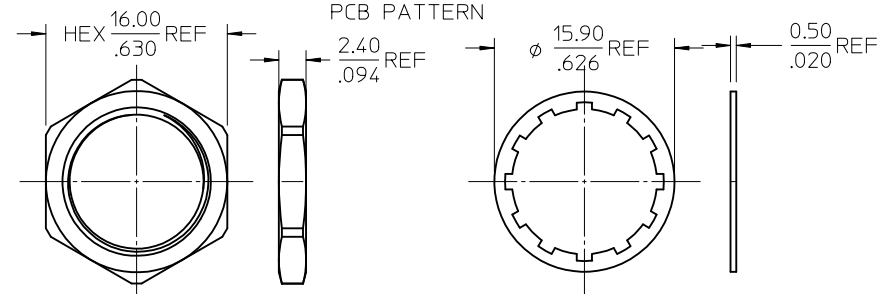
TOP VIEW



RECOMMENDED MOUNTING HOLE  
PANEL THICKNESS: 5.50 (.216) MAX  
RECOMMENDED MOUNTING TORQUE:  
1.36 N-m (12 INCH LBS) MAX



RECOMMENDED PCB HOLE  
CONFIGURATION



PS-89675-1030	PRODUCT SPECIFICATION
SPECIFICATION	DESCRIPTION

73171-4340	QTY (1) OF 73101-0400 IN SINGLE BAG WITH LABEL
73101-0401	WITH JAM NUT AND WASHER
73101-0400	WITHOUT JAM NUT AND WASHER
PART NO.	DESCRIPTION

CHG: ADD 73171-4340  
EC NO: URF2012-0419  
DRAWN BY: DRWINBOMALLEY 2012/01/17  
CHECKED BY: CHKD:AZR 2012/01/17  
APPR: JIENER 2012/01/24

QUALITY SYMBOLS  
▽=0  
▽=0

DESCRIPTION

REV: A3

GENERAL TOLERANCES (UNLESS SPECIFIED)

	mm	INCH
4 PLACES	± .005	± .0002
3 PLACES	± .003	± .0001
2 PLACES	± .002	± .00005
1 PLACE	± .001	± .00002
ANGULAR	± .0001°	

DIMENSION STYLE: MM/IN

SCALE: METRIC

DESIGN UNITS: METRIC

THIRD ANGLE PROJECTION

DRAWN BY: MICHAEL DATE: 2007/06/07  
CHECKED BY: KERRIE DATE: 2007/06/07  
APPROVED BY: MISEN DATE: 2007/06/07

TITLE: BNC JACK,R/A PCB,75 OHMS  
DIE CAST, RECEPTACLE  
BNC-J/RA/PCB

MATERIAL NO. SEE TABLE  
DOCUMENT NO. SD-73101-040

MOLEX MOLEX INCORPORATED

DRAFT WHERE APPLICABLE MUST REMAIN WITHIN DIMENSIONS

THIS DRAWING CONTAINS INFORMATION THAT IS PROPRIETARY TO MOLEX INCORPORATED AND SHOULD NOT BE USED WITHOUT WRITTEN PERMISSION

SHEET NO. 1 OF 1