



Chipsmall Limited consists of a professional team with an average of over 10 year of expertise in the distribution of electronic components. Based in Hongkong, we have already established firm and mutual-benefit business relationships with customers from,Europe,America and south Asia,supplying obsolete and hard-to-find components to meet their specific needs.

With the principle of “Quality Parts,Customers Priority,Honest Operation,and Considerate Service”,our business mainly focus on the distribution of electronic components. Line cards we deal with include Microchip,ALPS,ROHM,Xilinx,Pulse,ON,Everlight and Freescale. Main products comprise IC,Modules,Potentiometer,IC Socket,Relay,Connector.Our parts cover such applications as commercial,industrial, and automotives areas.

We are looking forward to setting up business relationship with you and hope to provide you with the best service and solution. Let us make a better world for our industry!



## Contact us

Tel: +86-755-8981 8866 Fax: +86-755-8427 6832

Email & Skype: info@chipsmall.com Web: www.chipsmall.com

Address: A1208, Overseas Decoration Building, #122 Zhenhua RD., Futian, Shenzhen, China



MATERIALS AND FINISHES

BODY, CAP: ZINC ALLOY  
PLATED NICKEL

CENTER CONTACT: PHOSPHOR BRONZE  
PLATED GOLD

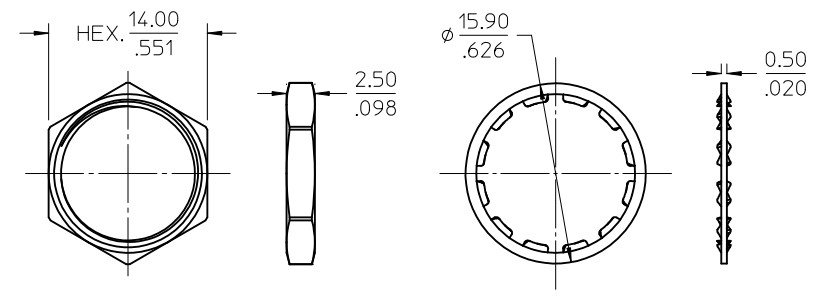
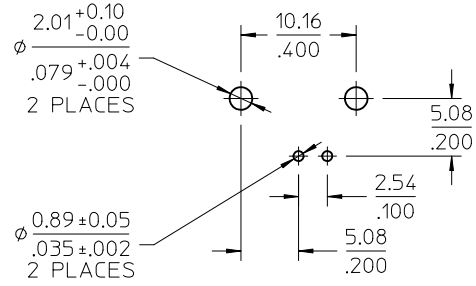
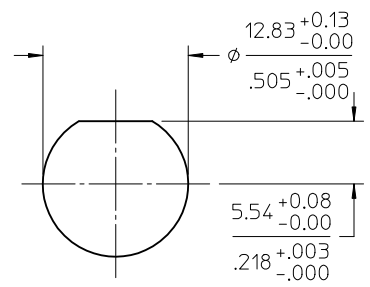
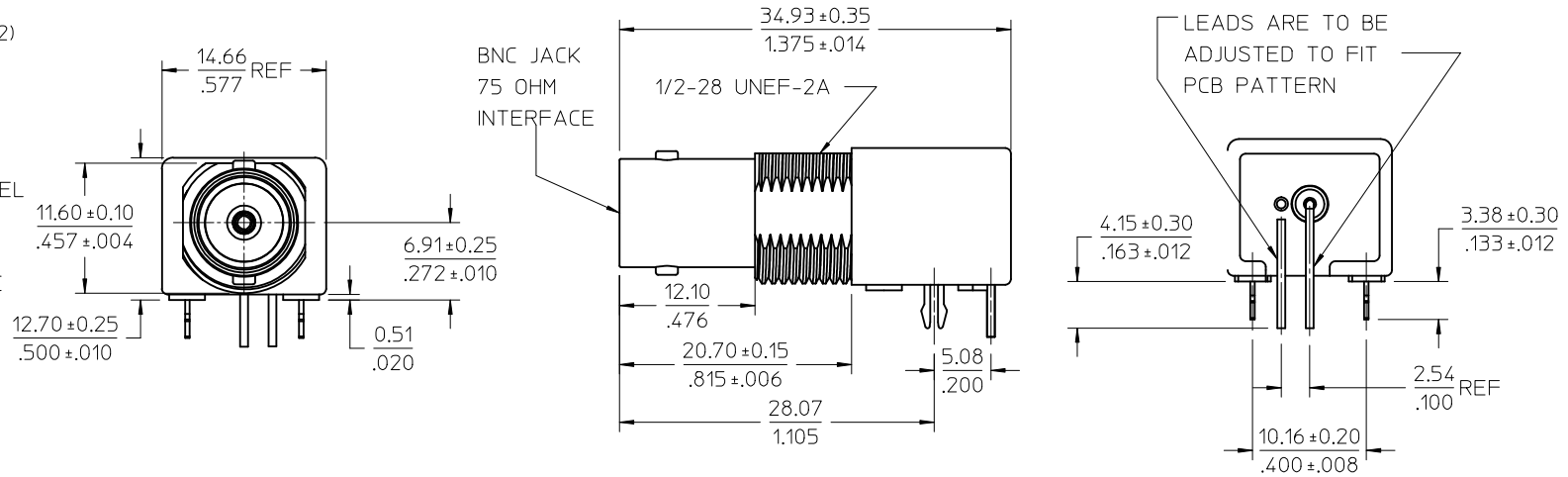
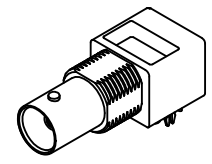
INSULATOR: POLYPROPYLENE(94V2)

BOARD LOCK: PHOSPHOR BRONZE  
PLATED TIN

SOLDER TAIL: COPPER OVER STEEL  
PLATED TIN

LOCKWASHER: PHOSPHOR BRONZE  
PLATED NICKEL

JAM NUT: BRASS  
PLATED NICKEL



RECOMMENDED MOUNTING HOLE  
PANEL THICKNESS: 5.40(.216) MAX.  
RECOMMENED MOUNTING TORQUE:  
1.36 N-m(12 INCH LBS) MAX.

RECOMMENDED PCB HOLE  
CONFIGURATION

73171-0561	ONE PER BAG
73171-0560	BULK
PART NO.	PACKAGING

PS-89675-1030	PRODUCT SPECIFICATION
SPECIFICATION	DESCRIPTION

CHG: ADD -0561	DESCRIPTION
EC NO: URF2012-0448	2012/02/03
DRWINBOMALLEY	2012/02/03
CHKD:AZR	2012/02/06
APPR: JWIENER	2012/02/06
REV	A2

QUALITY SYMBOLS	GENERAL TOLERANCES (UNLESS SPECIFIED)
▽=0	mm INCH
▽=0	4 PLACES ± --- ± ---
	3 PLACES ± --- ± ---
	2 PLACES ± --- ± ---
	1 PLACE ± --- ± ---
	ANGULAR ± 2 °
	DRAFT WHERE APPLICABLE MUST REMAIN WITHIN DIMENSIONS

DIMENSION STYLE	SCALE	DESIGN UNITS	THIRD ANGLE PROJECTION
MM/IN	METRIC		
DRAWN BY	DATE	TITLE	
CWE102	2011/09/13	BNC JACK R/A PCB, 75 OHM DIE CAST BNC-J/RA/PCB	
CHECKED BY	DATE		
AZR	2012/2/1		
APPROVED BY	DATE		
JWIENER	2012/02/06		
MATERIAL NO.	DOCUMENT NO.		
SEE TABLE	SD-73171-056		

MOLEX INCORPORATED		SHEET NO.
		1 OF 1
THIS DRAWING CONTAINS INFORMATION THAT IS PROPRIETARY TO MOLEX INCORPORATED AND SHOULD NOT BE USED WITHOUT WRITTEN PERMISSION		