



Chipsmall Limited consists of a professional team with an average of over 10 year of expertise in the distribution of electronic components. Based in Hongkong, we have already established firm and mutual-benefit business relationships with customers from,Europe,America and south Asia,supplying obsolete and hard-to-find components to meet their specific needs.

With the principle of “Quality Parts,Customers Priority,Honest Operation,and Considerate Service”,our business mainly focus on the distribution of electronic components. Line cards we deal with include Microchip,ALPS,ROHM,Xilinx,Pulse,ON,Everlight and Freescale. Main products comprise IC,Modules,Potentiometer,IC Socket,Relay,Connector.Our parts cover such applications as commercial,industrial, and automotives areas.

We are looking forward to setting up business relationship with you and hope to provide you with the best service and solution. Let us make a better world for our industry!



Contact us

Tel: +86-755-8981 8866 Fax: +86-755-8427 6832

Email & Skype: info@chipsmall.com Web: www.chipsmall.com

Address: A1208, Overseas Decoration Building, #122 Zhenhua RD., Futian, Shenzhen, China



MATERIALS AND FINISHES

BODY, COUPLING NUT SEE TABLE
PLATED SEE TABLE

CONTACT BERYLLIUM COPPER
PLATED GOLD

INSULATOR TEFLON

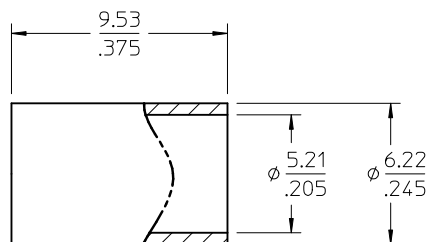
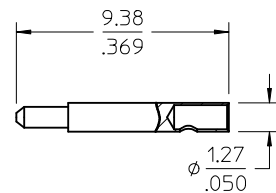
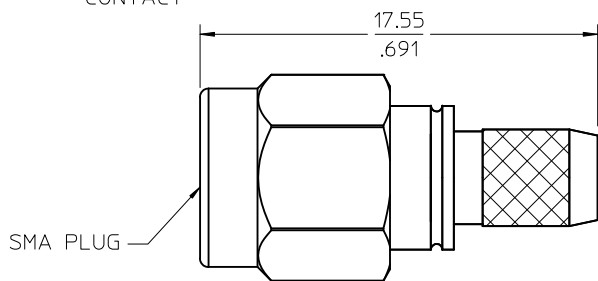
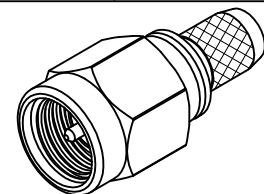
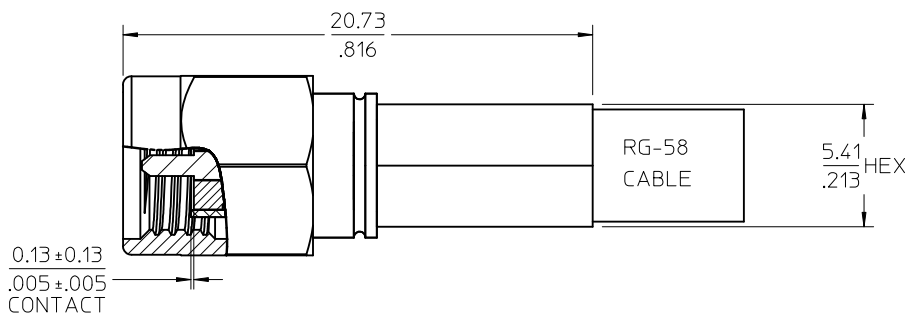
GASKET SILICONE RUBBER

C RING BERYLLIUM COPPER

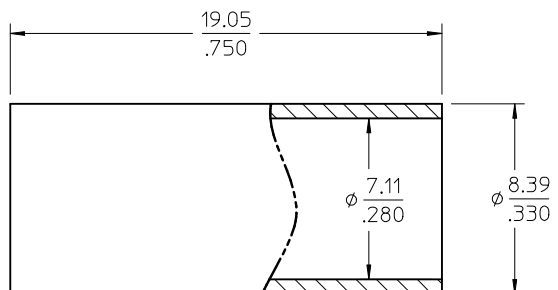
CRIMP TUBE BRASS
PLATED NICKEL

SHRINK TUBE
VERSAFIT 1/4

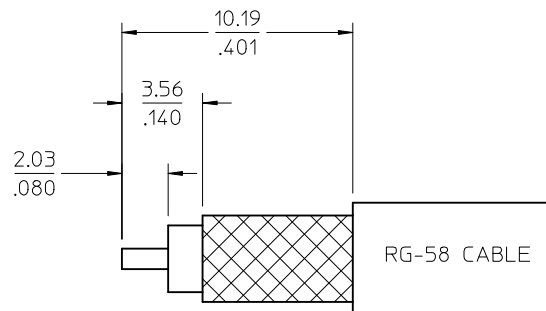
UL FILE E107635



CRIMP TUBE



SHRINK TUBE



RECOMMENDED CABLE STRIP

PS-89675-3460	ELECTRICAL/MECHANICAL
MIL-STD-348A, FIG. 310.1	INTERFACE
SPECIFICATION	DESCRIPTION

73251-0134	73251-0132 ONE PER BAG
73251-0133	STAINLESS STEEL / PASSIVATE (20 CAVITY TRAY)
73251-0132	BRASS / NICKEL PLATE (BULK PACK)
73251-0131	STAINLESS STEEL / PASSIVATE (BULK PACK)
PART NO.	DESCRIPTION

CHG: 73251-0134
ADD: 73251-0134
PS WAS 89675-1160

EC NO: URF2012-0421
DRWN: WIENER 2012/01/25
CHKD: SSS 2012/01/25
APPR: WIENER 2012/01/27

DESCRIPTION
REV: A5

QUALITY SYMBOLS ▽=0 ▽=0	GENERAL TOLERANCES (UNLESS SPECIFIED)	DIMENSION STYLE MM/IN	SCALE	DESIGN UNITS METRIC	THIRD ANGLE PROJECTION
	4 PLACES ± --- ± --- 3 PLACES ± --- ± --- 2 PLACES ± --- ± --- 1 PLACE ± --- ± ---	DRAWN BY SSS DATE 2000/01/04	CHECKED BY SSS DATE 2000/01/04	APPROVED BY GMH DATE 2000/01/04	TITLE SMA PLUG, STR 50 OHMS, RG 58 SMA-PC
DRAFT WHERE APPLICABLE MUST REMAIN WITHIN DIMENSIONS		MATERIAL NO. SEE TABLE	DOCUMENT NO. SD-73251-013	MOLEX INCORPORATED	
		SIZE C	THIS DRAWING CONTAINS INFORMATION THAT IS PROPRIETARY TO MOLEX INCORPORATED AND SHOULD NOT BE USED WITHOUT WRITTEN PERMISSION		SHEET NO. 1 OF 1