



Chipsmall Limited consists of a professional team with an average of over 10 year of expertise in the distribution of electronic components. Based in Hongkong, we have already established firm and mutual-benefit business relationships with customers from,Europe,America and south Asia,supplying obsolete and hard-to-find components to meet their specific needs.

With the principle of “Quality Parts,Customers Priority,Honest Operation,and Considerate Service”,our business mainly focus on the distribution of electronic components. Line cards we deal with include Microchip,ALPS,ROHM,Xilinx,Pulse,ON,Everlight and Freescale. Main products comprise IC,Modules,Potentiometer,IC Socket,Relay,Connector.Our parts cover such applications as commercial,industrial, and automotives areas.

We are looking forward to setting up business relationship with you and hope to provide you with the best service and solution. Let us make a better world for our industry!



Contact us

Tel: +86-755-8981 8866 Fax: +86-755-8427 6832

Email & Skype: info@chipsmall.com Web: www.chipsmall.com

Address: A1208, Overseas Decoration Building, #122 Zhenhua RD., Futian, Shenzhen, China



MATERIALS AND FINISHES

BODY, COUPLING NUT: BRASS
PLATED SEE TABLE

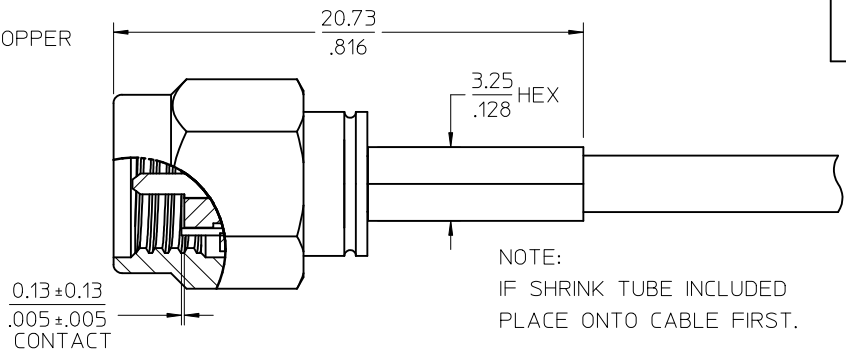
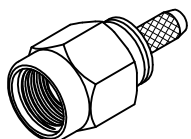
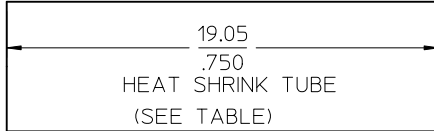
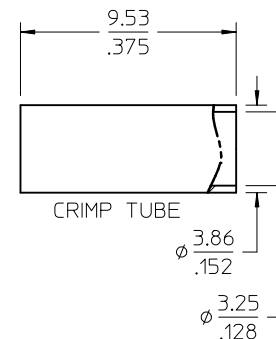
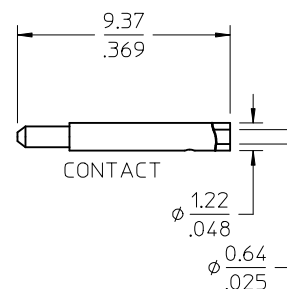
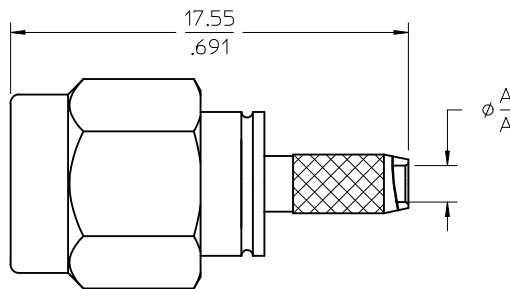
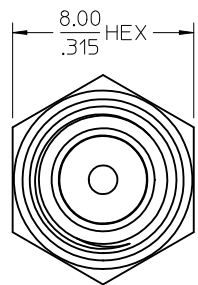
CRIMP TUBE: BRASS
PLATED NICKEL

CENTER CONTACT: BRASS
PLATED GOLD

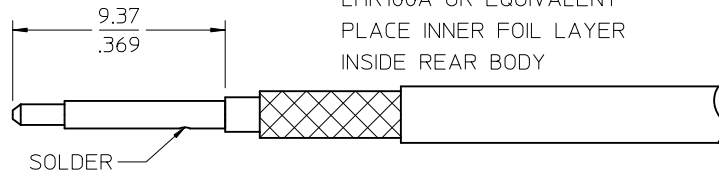
INSULATOR: TEFLON

SHRINK TUBE: VERSAFIT

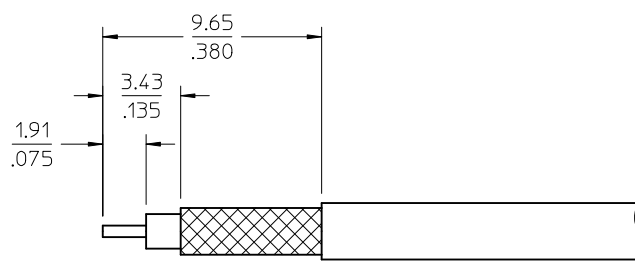
C-RING: BERYLLIUM COPPER



NOTE:
IF SHRINK TUBE INCLUDED
PLACE ONTO CABLE FIRST.



73251-0457 & -0458 IS FOR
LMR100A OR EQUIVALENT
PLACE INNER FOIL LAYER
INSIDE REAR BODY



73251-0458	NO HEAT SHRINK TUBE/PACKED STANDARD TRAY	GOLD	1.627 / .0680
73251-0457	WITH HEAT SHRINK TUBE/PACKED STANDARD TRAY	GOLD	1.627 / .0680
73251-0456	73251-0450 PACKED ONE PIECE PER BAG	GOLD	1.613 / .0635
73251-0455	73251-0453 PACKED IN SMALL TRAY (20 CAVITY)	NICKEL	1.613 / .0635
73251-0454	WITHOUT SHRINK TUBE/PACKED STANDARD TRAY	NICKEL	1.613 / .0635
73251-0453	WITH SHRINK TUBE/PACKED STANDARD TRAY	NICKEL	1.613 / .0635
73251-0452	73251-0450, PACKAGED IN SMALL TRAY (20 CAVITY)	GOLD	1.613 / .0635
73251-0451	WITHOUT SHRINK TUBE/PACKED STANDARD TRAY	GOLD	1.613 / .0635
73251-0450	WITH HEAT SHRINK TUBE/PACKED STANDARD TRAY	GOLD	1.613 / .0635
PART NO.	DESCRIPTION	FINISH	MM / IN
		BODY/NUT	DIM A

PS-89675-3460	PRODUCT SPECIFICATION
MIL-STD-348A, FIG. 310.1	INTERFACE
SPECIFICATION	DESCRIPTION

CHG: ADDED -0457 & -0458.
 EC NO: URF2011-0642
 DRW: DRWINAROBERTSON 2011/05/02
 CHK: CHKD:SSS 2011/05/02
 APPR: APPR: JWIENER 2011/05/03
 A6

QUALITY SYMBOLS
 ▼=0
 ▽=0

GENERAL TOLERANCES (UNLESS SPECIFIED)
 mm INCH
 4 PLACES ± --- ± ---
 3 PLACES ± --- ± ---
 2 PLACES ± --- ± ---
 1 PLACE ± --- ± ---
 ANGULAR ± 2°

DRAFT WHERE APPLICABLE
 MUST REMAIN
 WITHIN DIMENSIONS

DIMENSION STYLE: MM/IN
 SCALE: INCH
 DESIGN UNITS: INCH
 THIRD ANGLE PROJECTION

DRAWN BY: TEF DATE: 2000/11/09
 CHECKED BY: SSS DATE: 2000/11/09
 APPROVED BY: GMH DATE: 2000/11/09

TITLE: SMA PLUG STRAIGHT
 RG-316 50 OHM
 SMA-PC EWR-1766

MOLEX INCORPORATED
 MATERIAL NO. SEE TABLE
 DOCUMENT NO. SD-73251-045
 SHEET NO. 1 OF 1

THIS DRAWING CONTAINS INFORMATION THAT IS PROPRIETARY TO MOLEX INCORPORATED AND SHOULD NOT BE USED WITHOUT WRITTEN PERMISSION